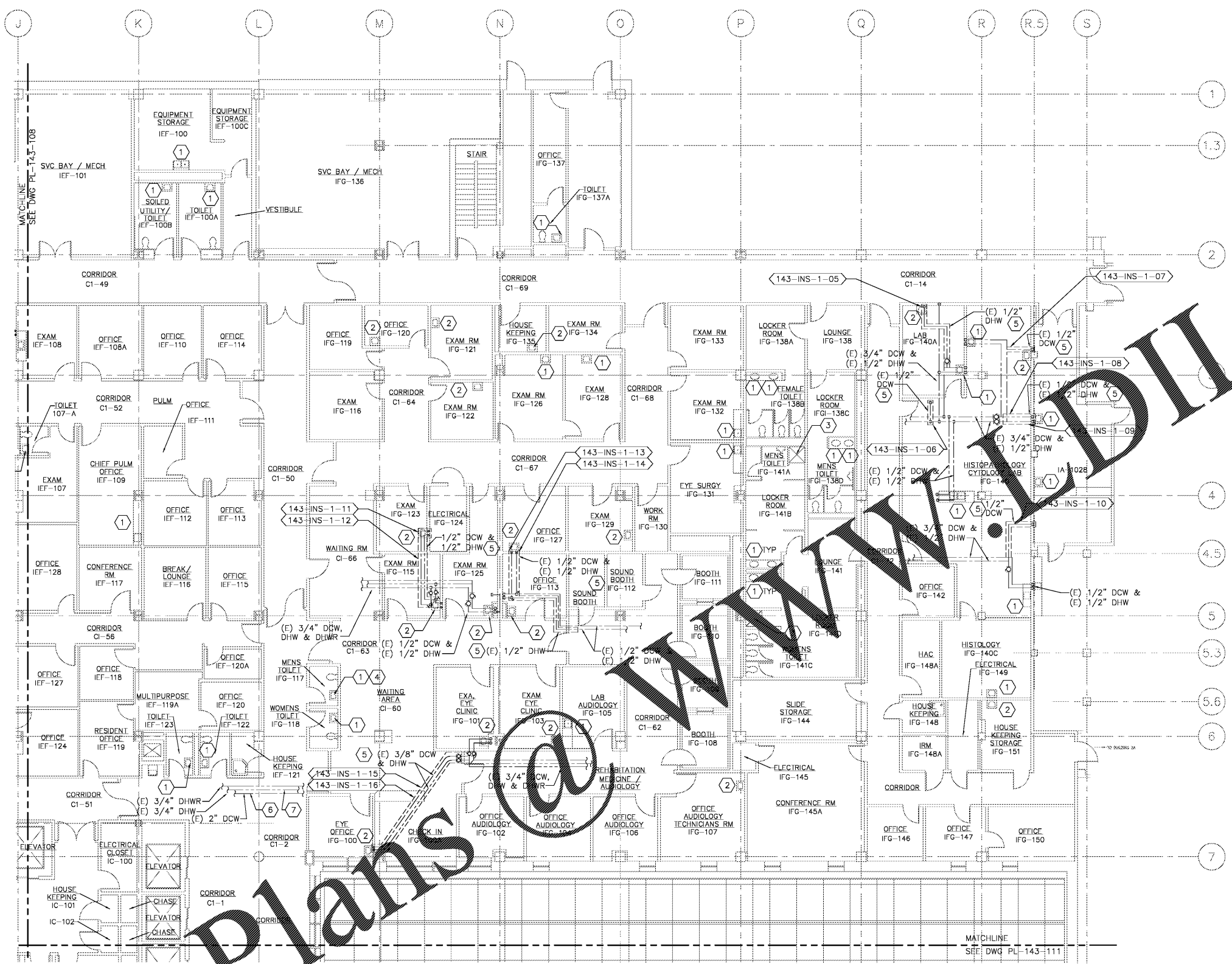


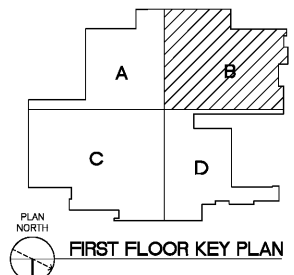
CONSTRUCTION NOTES:

- 1 PROVIDE THERMOSTATIC MIXING VALVE BELOW SINK/LAVATORY PER DETAIL 'C' ON DRAWING PL-501.
- 2 PROVIDE THERMOSTATIC MIXING VALVE IN CEILING ABOVE LAV PER DETAIL 'D' ON DRAWING PL-501.
- 3 REMOVE SHOWER VALVE AND PROVIDE ASSE 1016 THERMOSTATIC AND PRESSURE BALANCING COMBINATION SHOWER VALVE. REMOVE AND REPLACE PORTION OF TILE WALL TO ALLOW INSTALLATION OF NEW SHOWER VALVE.
- 4 REMOVE FAUCET AERATOR AND PROVIDE LAMINAR FLOW OUBET.
- 5 INSULATE PIPING WITH FLEXIBLE CUSTOMER INSULATION.
- 6 PROVIDE TEMPERATURE SENSOR IN DCW AND CONNECT TO DDC PANEL LOCATED IN SUB-BASEMENT MECH RM. REFER TO DWG. PL-143-401.
- 7 PROVIDE TEMPERATURE SENSOR IN DHW AND CONNECT TO DDC PANEL LOCATED IN SUB-BASEMENT MECH RM. REFER TO DWG. PL-143-401.



three inches = one foot
 one and one-half inches = one foot
 one inch = one foot
 three-quarters inch = one foot
 one-half inch = one foot
 three-eighths inch = one foot
 one-quarter inch = one foot
 one-eighth inch = one foot

PLAN NORTH
 1 FIRST FLOOR PLUMBING PLAN - AREA 'B'
 SCALE: 1/8" = 1'-0"



Order Plans
www@wileywilson.com

Revisions Date	Atrix Atrix, plc 102 3rd Avenue, NE PO Box 1628, Hickory, NC 28603 Phone: 828.315.9962 Fax: 828.315.9964 www.atrigrp.com	Wiley Wilson Wiley Wilson 127 Natterville Drive Lynchburg, VA 24502 Phone: 434.947.1901 www.wileywilson.com		Approved: Energy Engineer	Approved: Safety Manager	Approved: Service Chief	Drawing Title PL-143-109 BLDG 143 FIRST FLOOR PLUMBING PLAN AREA 'B' NEW WORK	Project Title RENOVATE FOR WATER QUALITY	Date 04/28/2017	Veterans Affairs
				CONSTRUCTION DOCUMENTS	Approved: Infection Control Officer	Approved: Chief of Staff	Approved: Chief of Facility Management Svcs.	Project No. 658-15-101		
				Approved: GEMS Coordinator	Approved: Associate Director	Approved: Medical Center Director	Building Number 143	Checked MJG	Drawn JFC	DRAWING SET 2592
							Location VA MEDICAL CENTER, SALEM, VA 24153			Dwg. 110 Of 155