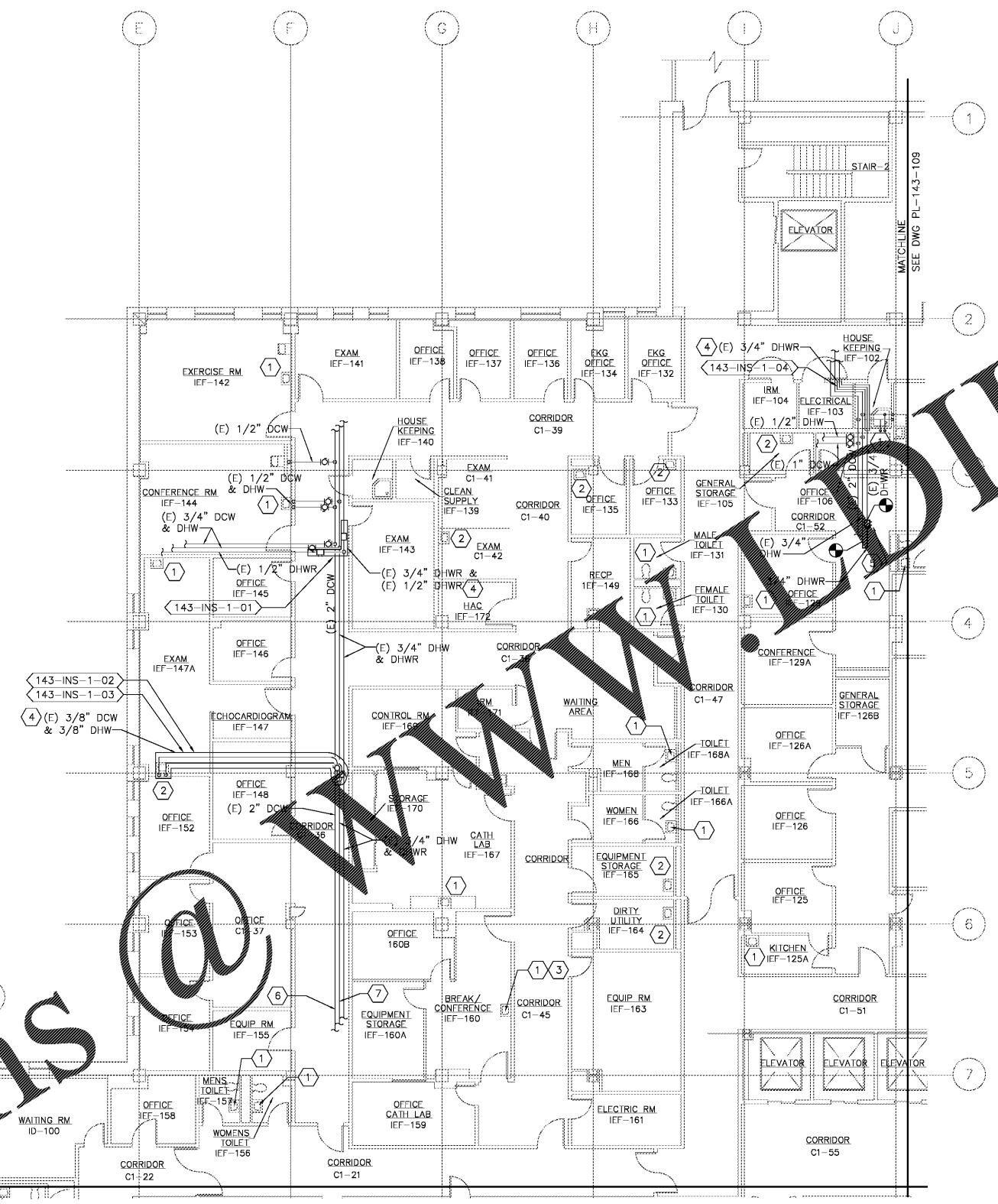
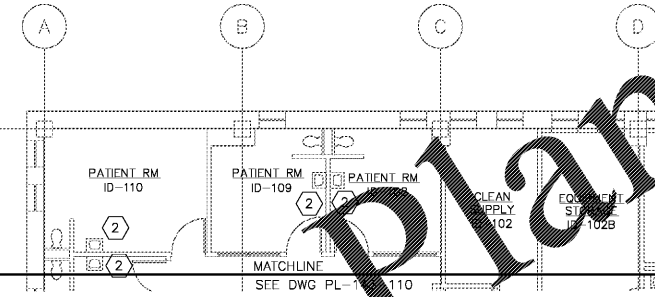


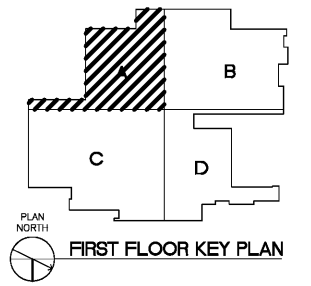
three inches = one foot
 one and one-half inches = one foot
 one inch = one foot
 three-quarters inch = one foot
 one-half inch = one foot
 three-eighths inch = one foot
 one-quarter inch = one foot
 one-eighth inch = one foot



- CONSTRUCTION NOTES:**
- 1 PROVIDE THERMOSTATIC MIXING VALVE BELOW SINK/LAVATORY PER DETAIL 'C' ON DRAWING PL-501.
 - 2 PROVIDE THERMOSTATIC MIXING VALVE IN CEILING ABOVE LAV PER DETAIL 'D' ON DRAWING PL-501.
 - 3 REMOVE FAUCET AERATOR AND PROVIDE LAMINAR FLOW OUTLET.
 - 4 INSULATE PIPING WITH FLEXIBLE ELASTOMERIC INSULATION.
 - 5 PROVIDE COMBINATION SHUTOFF/BALANCING VALVE SET AT 0.5 GPM.
 - 6 PROVIDE TEMPERATURE SENSOR IN FLOOR AREA CONNECT TO DDC PANEL LOCATED IN SUB-BASEMENT MECH RM. REFER TO DWG. PL-143-401.
 - 7 PROVIDE TEMPERATURE SENSOR IN DHW AND CONNECT TO DDC PANEL LOCATED IN SUB-BASEMENT MECH RM. REFER TO DWG. PL-143-401.



PLAN NORTH
 1 **FIRST FLOOR PLUMBING PLAN - AREA 'A'**
 SCALE: 1/8" = 1'-0"



Order Plans

Revisions	Date

Atrix
 Atrix, pllc
 102 3rd Avenue, NE
 PO Box 1628,
 Hickory, NC 28603
 Phone: 828.315.9962
 Fax: 828.315.9964
 www.atrrixgroup.com

Wiley/Wilson
 Wiley/Wilson
 127 Nationwide Drive
 Lynchburg, VA 24502
 Phone: 434.947.1901
 www.wileywilson.com



Approved: Energy Engineer
 Approved: Safety Manager
 Approved: Infection Control Officer
 Approved: GEMS Coordinator

CONSTRUCTION DOCUMENTS

Approved: Service Chief
 Approved: Chief of Staff
 Approved: Associate Director

Drawing Title
 PL-143-108
 BLDG 143 FIRST FLOOR PLUMBING PLAN
 AREA 'A' NEW WORK

Project Title
 RENOVATE FOR WATER QUALITY

Building Number 143
 Location VA MEDICAL CENTER, SALEM, VA 24153

Date 04/28/2017
 Project No. 658-15-101
 DRAWING SET
 2592
 Dwg. 109 Of 155

Veterans Affairs