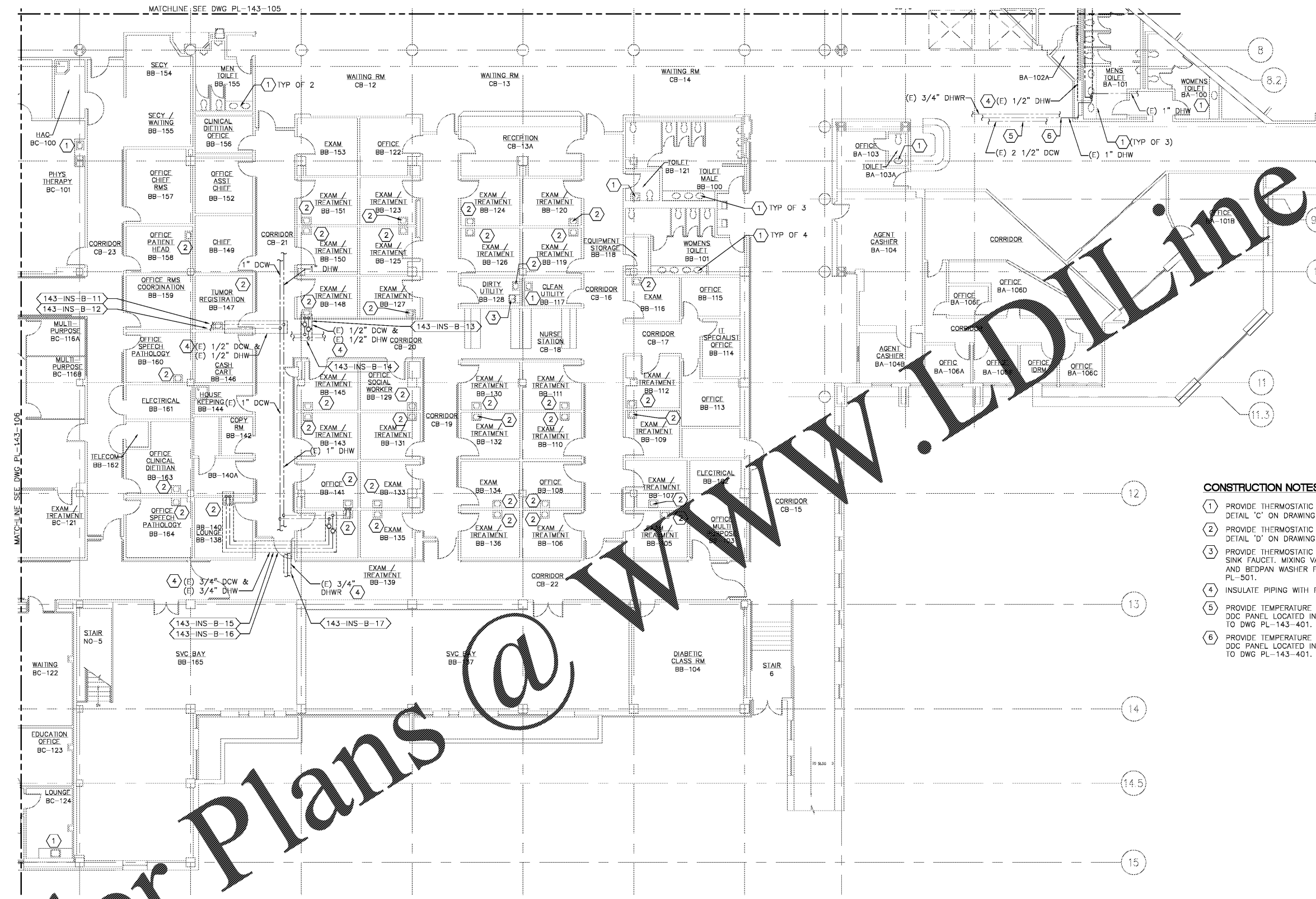
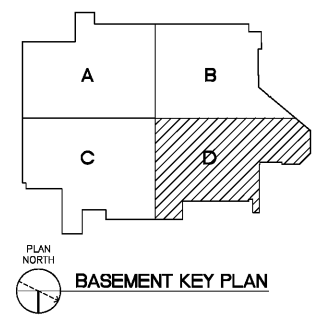


three inches = one foot
 one and one-half inches = one foot
 one inch = one foot
 three-quarters inch = one foot
 one-half inch = one foot
 three-eighths inch = one foot
 one-quarter inch = one foot
 one-eighth inch = one foot



- CONSTRUCTION NOTES:**
- 1 PROVIDE THERMOSTATIC MIXING VALVE BELOW SINK/LAVATORY PER DETAIL 'C' ON DRAWING PL-501.
 - 2 PROVIDE THERMOSTATIC MIXING VALVE IN CEILING ABOVE LAV PER DETAIL 'D' ON DRAWING PL-501.
 - 3 PROVIDE THERMOSTATIC MIXING VALVE IN CEILING ABOVE CLINIC SINK FAUCET, MIXING VALVE SHALL SERVE CLINIC SINK FAUCET AND BEDPAN WASHER FOOT PEDAL PER DETAIL 'D' ON DRAWING PL-501.
 - 4 INSULATE PIPING WITH FLEXIBLE ELASTOMERIC INSULATION.
 - 5 PROVIDE TEMPERATURE SENSOR IN DCW AND CONNECT TO DDC PANEL LOCATED IN SUB-BASEMENT MECH RM. REFER TO DWG PL-143-401.
 - 6 PROVIDE TEMPERATURE SENSOR IN DHW AND CONNECT TO DDC PANEL LOCATED IN SUB-BASEMENT MECH RM. REFER TO DWG PL-143-401.

PLAN NORTH
 1 BASEMENT PLUMBING PLAN - AREA 'D'
 SCALE: 1/8" = 1'-0"



Order Plans @

Revisions Date	 Atrix, plc 102 3rd Avenue, NE PO Box 1628, Hickory, NC 28603 Phone: 828.315.9962 Fax: 828.315.9964 www.atrigrp.com	 Wiley Wilson 127 Natterville Drive Lynchburg, VA 24502 Phone: 434.947.1901 www.wileywilson.com		Approved: Energy Engineer	Approved: Safety Manager	Approved: Service Chief	Drawing Title PL-143-107 BLDG 143 BASEMENT PLUMBING PLAN AREA 'D' NEW WORK	Project Title RENOVATE FOR WATER QUALITY	Date 04/28/2017	Project No. 658-15-101	Drawing Set 2592	Dwg. 108 Of 155
				CONSTRUCTION DOCUMENTS	Approved: Infection Control Officer	Approved: Chief of Staff						
				Approved: GEMS Coordinator	Approved: Associate Director	Approved: Medical Center Director						Veterans Affairs