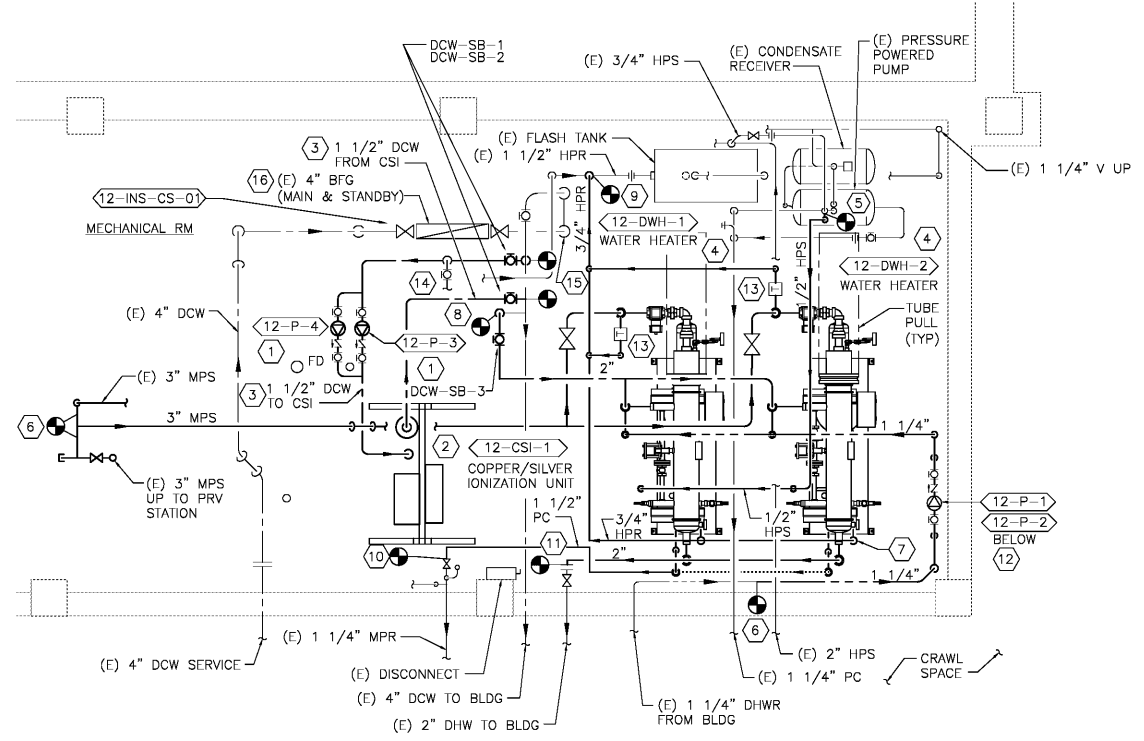
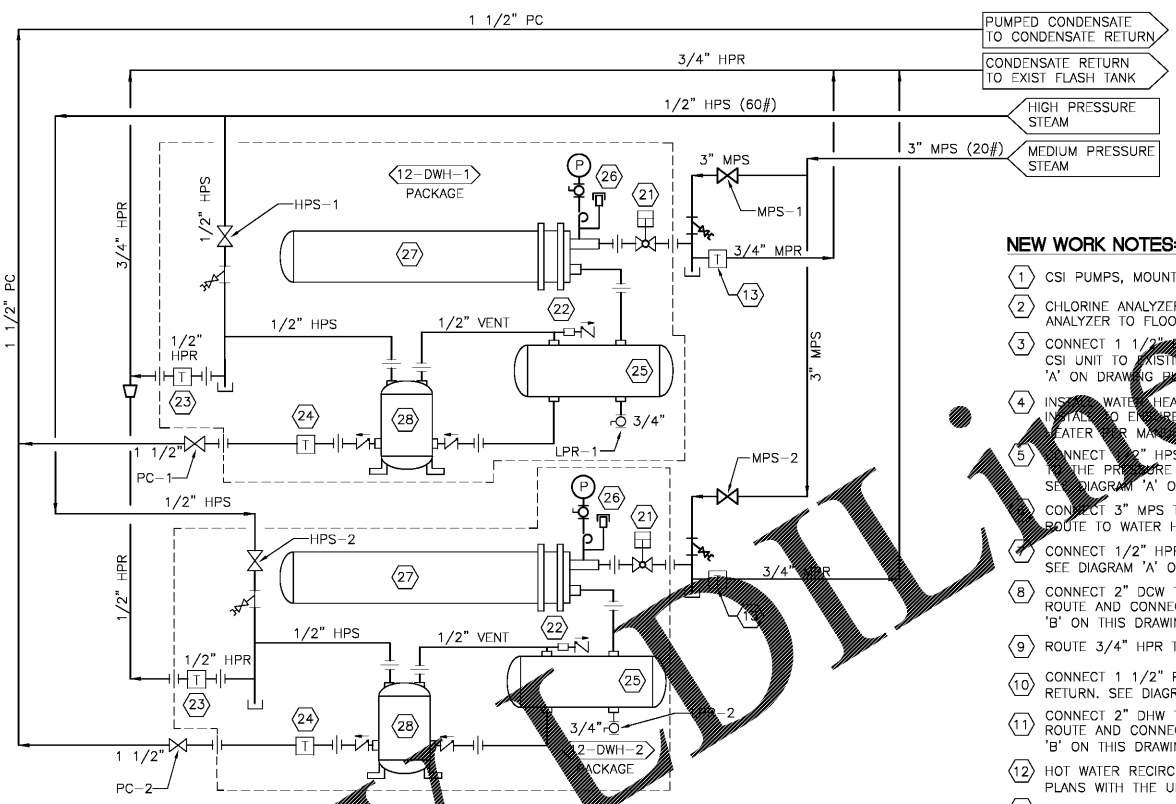


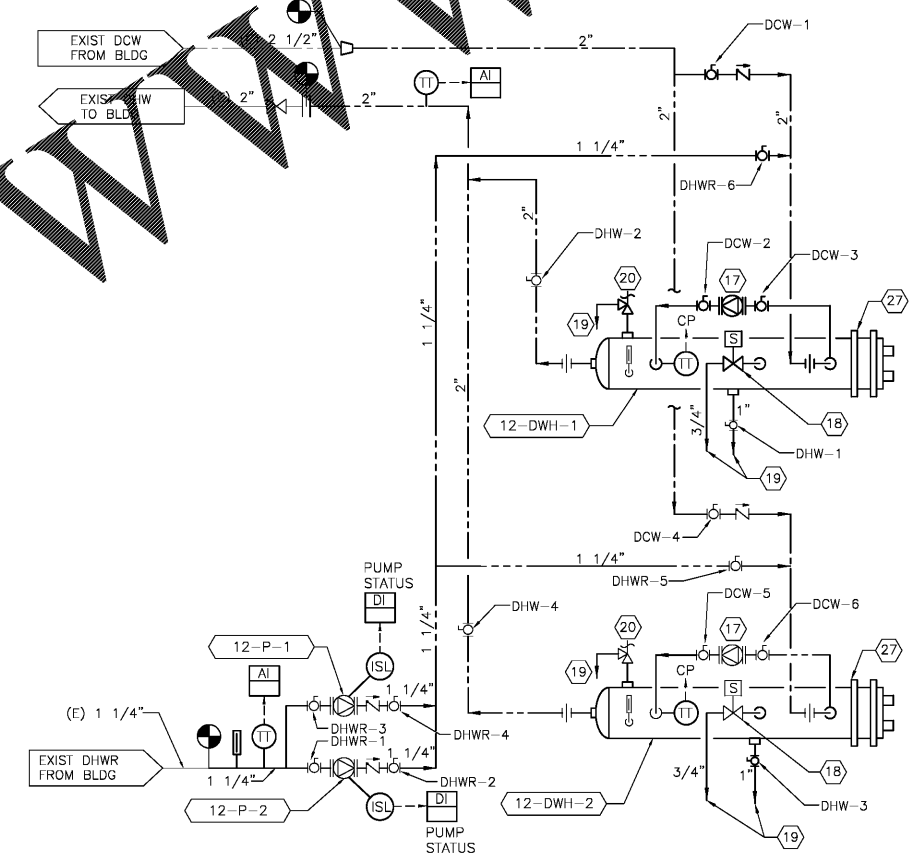
three inches = one foot
 one and one-half inches = one foot
 one inch = one foot
 three-quarters inch = one foot
 one-half inch = one foot
 three-quarters inch = one foot
 one-quarter inch = one foot
 one-eighth inch = one foot



PLAN NORTH
1
ENLARGED SUB-BASEMENT PLUMBING NEW WORK PLAN
 SCALE: 1/2" = 1'-0"



A **BLDG 12 DOMESTIC WATER HEATERS STEAM AND CONDENSATE DIAGRAM**
 NO SCALE



B **BLDG 12 DOMESTIC WATER HEATERS DOMESTIC WATER DIAGRAM**
 NO SCALE

NEW WORK NOTES:

- 1 CSI PUMPS, MOUNT AT 6'-0" ABOVE FINISHED FLOOR.
- 2 CHLORINE ANALYZER, ROUTE 1/2" DRAIN FROM CHLORINE ANALYZER TO FLOOR DRAIN. CONNECT TO DDC PANEL.
- 3 CONNECT 1 1/2" DCW PIPING TO EXISTING 1 1/2" DCW LINE. SEE DIAGRAM 'A' ON DRAWING PL-501.
- 4 INSTALL WATER HEATER ON CONCRETE PAD. INSTALL TO ENSURE THE HEATER IS LEVEL. INSTALL HEATER PER MANUFACTURER'S RECOMMENDATIONS.
- 5 CONNECT 2" HPS TO EXISTING 3/4" HPS AND ROUTE THE PRESSURE POWERED CONDENSATE PUMP ON SKID. SEE DIAGRAM 'A' ON THIS DRAWING.
- 6 CONNECT 3" MPS TO EXISTING 3" MPS PIPING AND ROUTE TO WATER HEATERS. SEE DIAGRAM 'A' ON THIS DRAWING.
- 7 CONNECT 1/2" HPR TO HIGH PRESSURE STEAM TRAP ON SKID. TYP OF 2. SEE DIAGRAM 'A' ON THIS DRAWING.
- 8 CONNECT 2" DCW TO EXISTING 2 1/2" DCW LINE. ROUTE AND CONNECT TO WATER HEATER. SEE DIAGRAM 'B' ON THIS DRAWING.
- 9 ROUTE 3/4" HPR TO EXISTING 1 1/2" HPR LINE.
- 10 CONNECT 1 1/2" PC TO EXISTING 1 1/4" CONDENSATE RETURN. SEE DIAGRAM 'A' ON THIS DRAWING.
- 11 CONNECT 2" DHW TO EXISTING 2" DHW AT FLANGE. ROUTE AND CONNECT TO WATER HEATER. SEE DIAGRAM 'B' ON THIS DRAWING.
- 12 HOT WATER RECIRC PUMPS, STACK PUMPS AS SHOWN ON PLANS WITH THE UPPER PUMP AT 4'-0" ABOVE FINISHED FLOOR.
- 13 STEAM TRAP ASSEMBLY, SEE DETAIL 'F' ON DWG PL-501.
- 14 1/2" DCW TO CHLORINE ANALYZER. PROVIDE SHUT-OFF VALVE AT CHLORINE ANALYZER.
- 15 PROVIDE PRESSURE TRANSMITTER AND TEMPERATURE TRANSMITTER IN EXISTING 4" DCW MAIN AND CONNECT TO DDC PANEL.
- 16 INSULATE TWO EXISTING ZURN/WATKINS MODEL 1375 BACKFLOW PREVENTERS AND ASSOCIATED STRAINER AND SHUT-OFF VALVES.
- 17 WATER HEATER CIRCULATING PUMP
- 18 HIGH TEMPERATURE DUMP VALVE
- 19 TO FLOOR DRAIN
- 20 PRESSURE AND TEMPERATURE RELIEF VALVE
- 21 STEAM CONTROL VALVE
- 22 AIR VENT AND CHECK VALVE
- 23 INVERTED BUCKET STEAM TRAP
- 24 FLOAT & THERMOSTATIC STEAM TRAP
- 25 CONDENSATE RECEIVER
- 26 VACUUM BREAKER
- 27 SHELL & TUBE HEAT EXCHANGER
- 28 PRESSURE POWERED PUMP

Order Plans @ WWW.WWEDILING.COM

Revisions Date	 Atriax, pllc 102 3rd Avenue, NE PO Box 1628, Hickory, NC 28603 Phone: 828.315.9962 Fax: 828.315.9964 www.atriagroup.com	 WileyWilson 127 Natchawile Drive Lynchburg, VA 24502 Phone: 434.947.1901 www.wileywilson.com		Approved: Energy Engineer CONSTRUCTION DOCUMENTS	Approved: Safety Manager Approved: Infection Control Officer Approved: GEMS Coordinator	Approved: Service Chief Approved: Chief of Staff Approved: Associate Director	Drawing Title PL-12-401 BLDG 12 ENLARGED SUB-BASEMENT PLUMBING PLAN NEW WORK	Project Title RENOVATE FOR WATER QUALITY	Date 04/28/2017 Project No. 658-15-101 Building Number 12 Checked MUG Drawn JFC Location VA MEDICAL CENTER, SALEM, VA 24153	Drawing Set 2592 Dwg. 96 Of 155 Veterans Affairs
-------------------	---	--	--	--	---	---	--	--	--	--