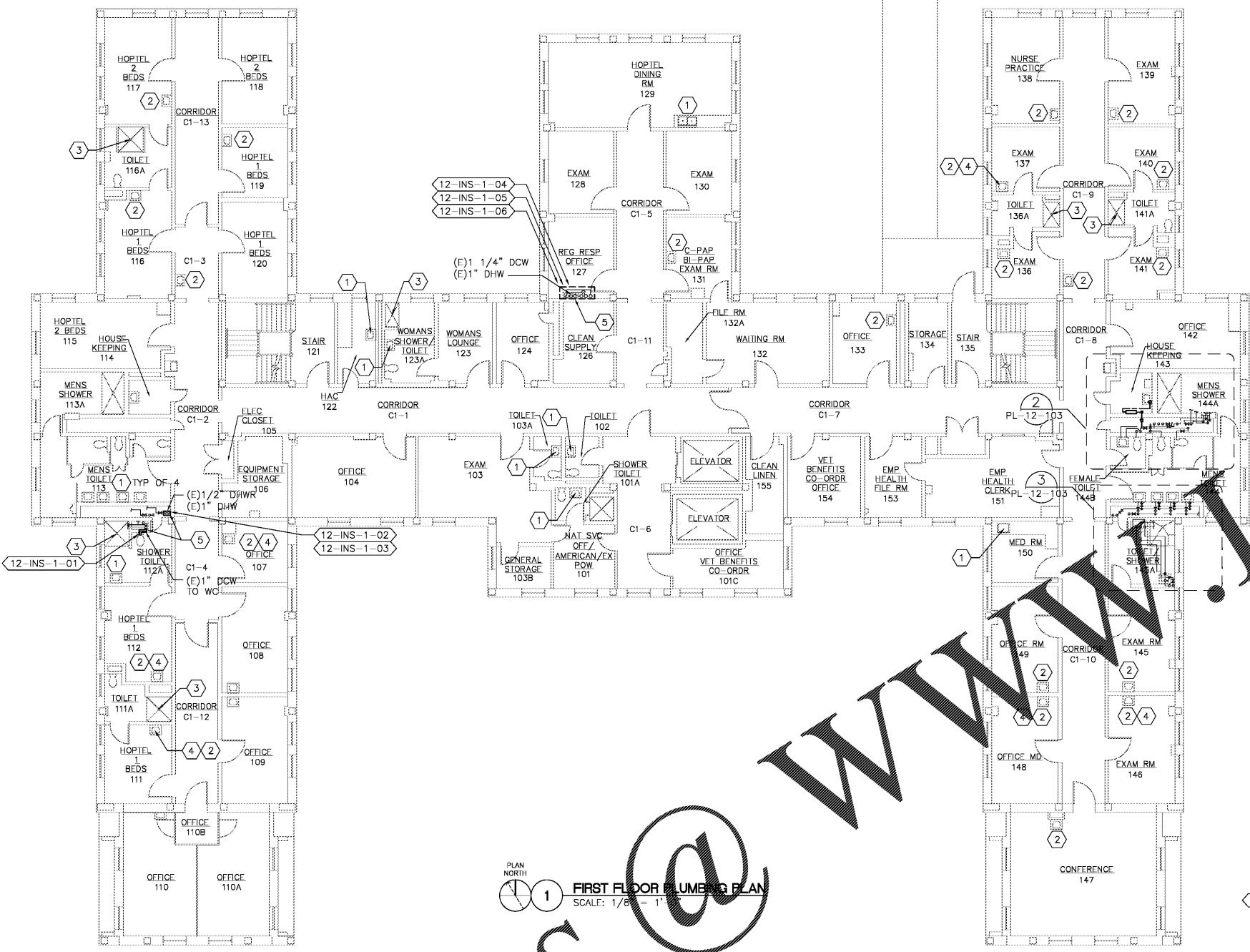
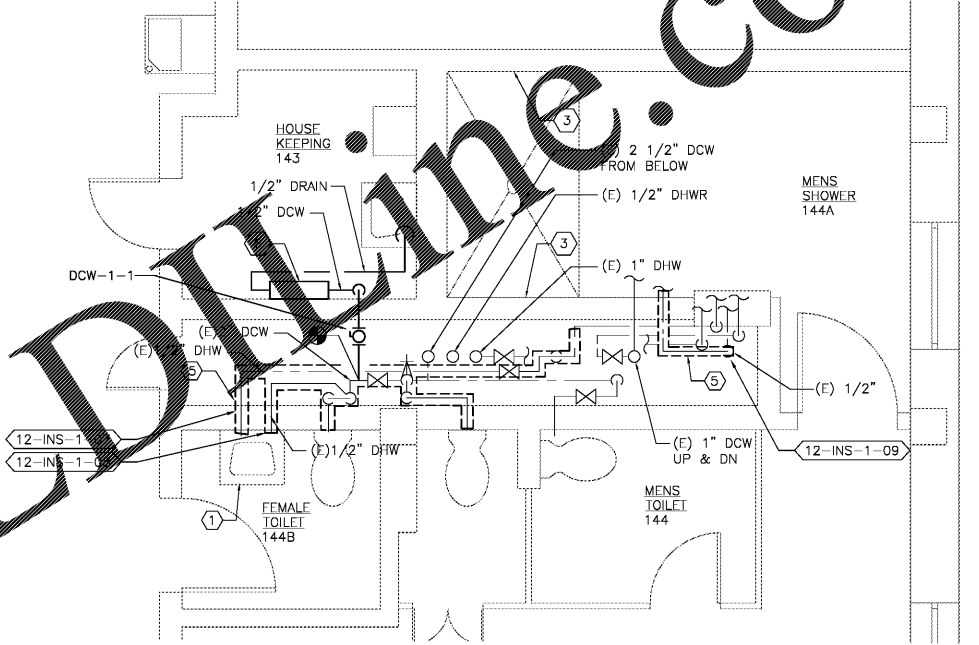


three inches = one foot
 one and one-half inches = one foot
 one inch = one foot
 three-quarters inch = one foot
 one-half inch = one foot
 three-eighths inch = one foot
 one-quarter inch = one foot
 one-eighth inch = one foot

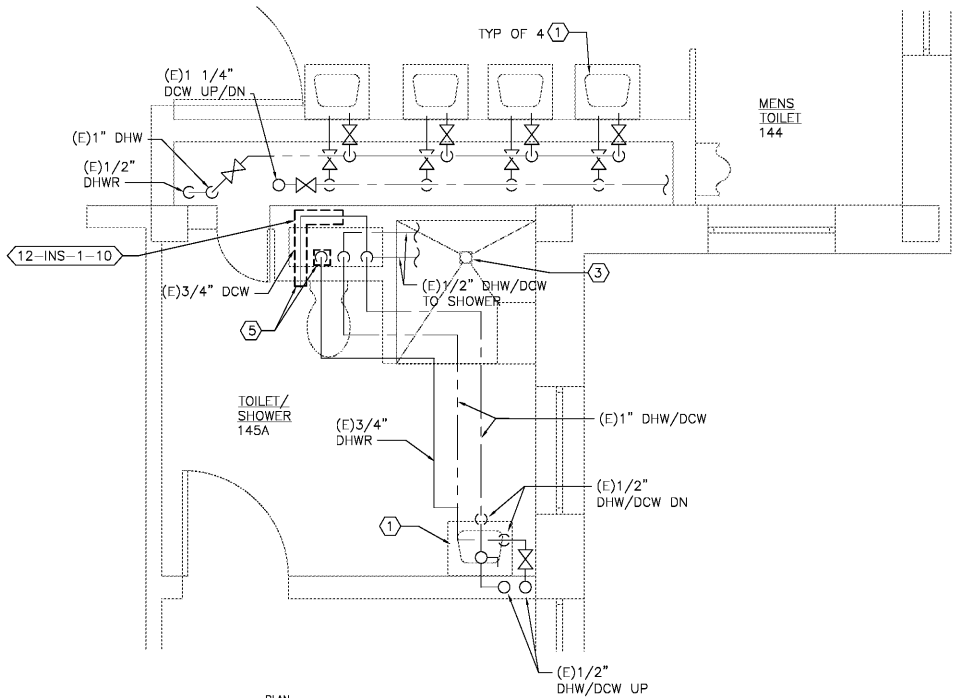


1 FIRST FLOOR PLUMBING PLAN
 SCALE: 1/8" = 1'-0"

- CONSTRUCTION NOTES:**
- 1 PROVIDE THERMOSTATIC MIXING VALVE BELOW SINK/LAVATORY PER DETAIL C DRAWING PL-501.
 - 2 PROVIDE THERMOSTATIC MIXING VALVE IN CEILING ABOVE LAV PER DETAIL D DRAWING PL-501.
 - 3 REMOVE SHOWER VALVE AND PROVIDE ASSE 1016 THERMOSTATIC AND PRESSURE BALANCING COMBINATION SHOWER VALVE. REMOVE AND REPLACE PORTION OF TILE WALL TO ALLOW INSTALLATION OF NEW SHOWER VALVE.
 - 4 REMOVE FAUCET AERATOR AND PROVIDE LAMINAR FLOW OUTLET.
 - 5 INSULATE PIPING WITH FIBERGLASS INSULATION.
 - 6 PROVIDE CHLORINE ANALYZER. CONNECT TO DDC PANEL LOCATED IN HIGH RM BASEMENT LEVEL. PROVIDE 1/2" SAMPLE OUTLET DRAIN PIPING TO SINK. PROVIDE SHUT-OFF VALVE IN VERTICAL ON 1/2" DCW SUPPLY.



2 FIRST FLOOR PARTIAL PLUMBING PLAN
 SCALE: 1/2" = 1'-0"



3 FIRST FLOOR PARTIAL PLUMBING PLAN
 SCALE: 1/2" = 1'-0"

Order Plans

Revisions	Date

Atrix
 Atrix, plc
 102 3rd Avenue, NE
 PO Box 1628,
 Hickory, NC 28603
 Phone: 828.315.9962
 Fax: 828.315.9964
 www.atraxisgroup.com

WileyWilson
 WileyWilson
 127 Nantowite Drive
 Lynchburg, VA 24502
 Phone: 434.947.1901
 www.wileywilson.com



Approved: Energy Engineer	Approved: Safety Manager	Approved: Service Chief
	Approved: Infection Control Officer	Approved: Chief of Staff
	Approved: GEMS Coordinator	Approved: Associate Director

Drawing Title	Project Title
PL-12-103 BLDG 12 FIRST FLOOR PLUMBING PLAN NEW WORK	RENOVATE FOR WATER QUALITY
Approved: Chief of Facility Management Svc.	Building Number 12
Approved: Medical Center Director	Checked MJG
	Drawn JFC
	Location VA MEDICAL CENTER, SALEM, VA 24153

Date	04/28/2017
Project No.	658-15-101
DRAWING SET	2592
Dwg.	94 Of 155

Veterans Affairs

CONSTRUCTION DOCUMENTS