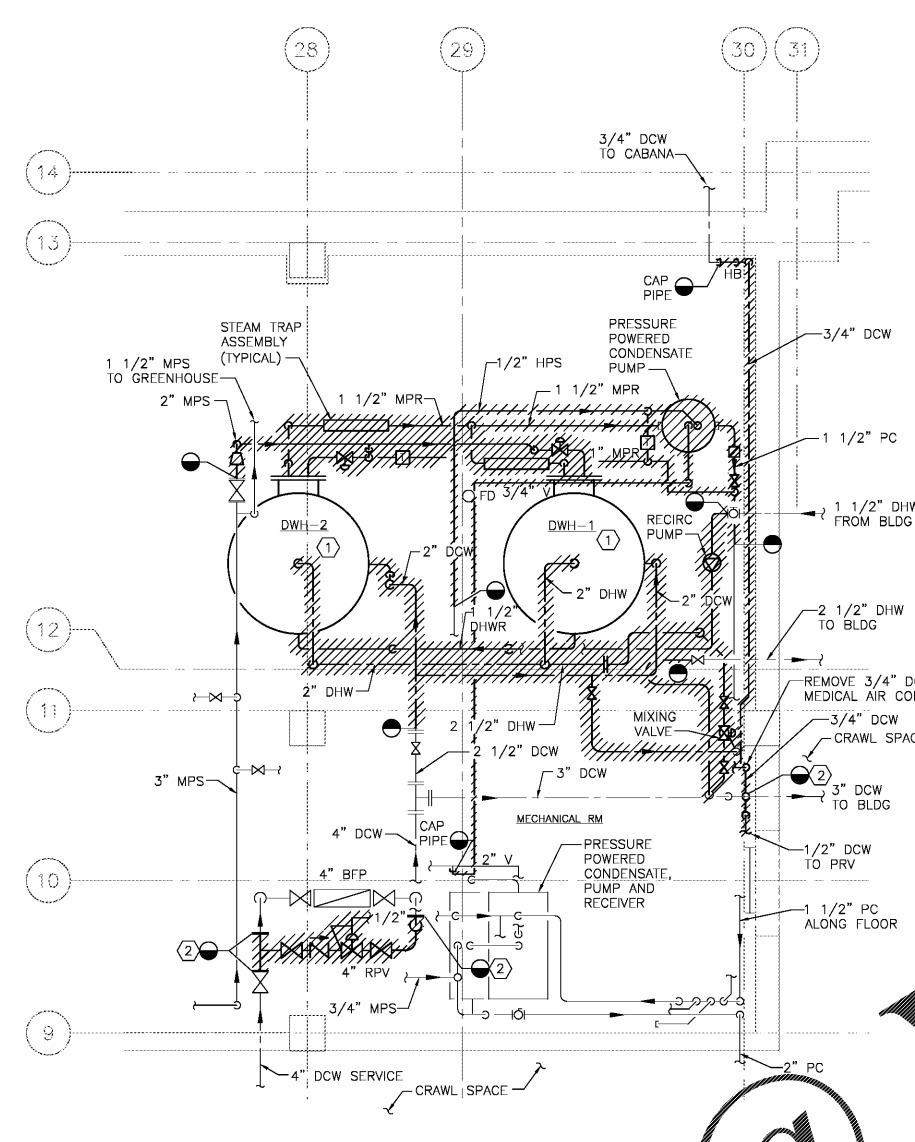
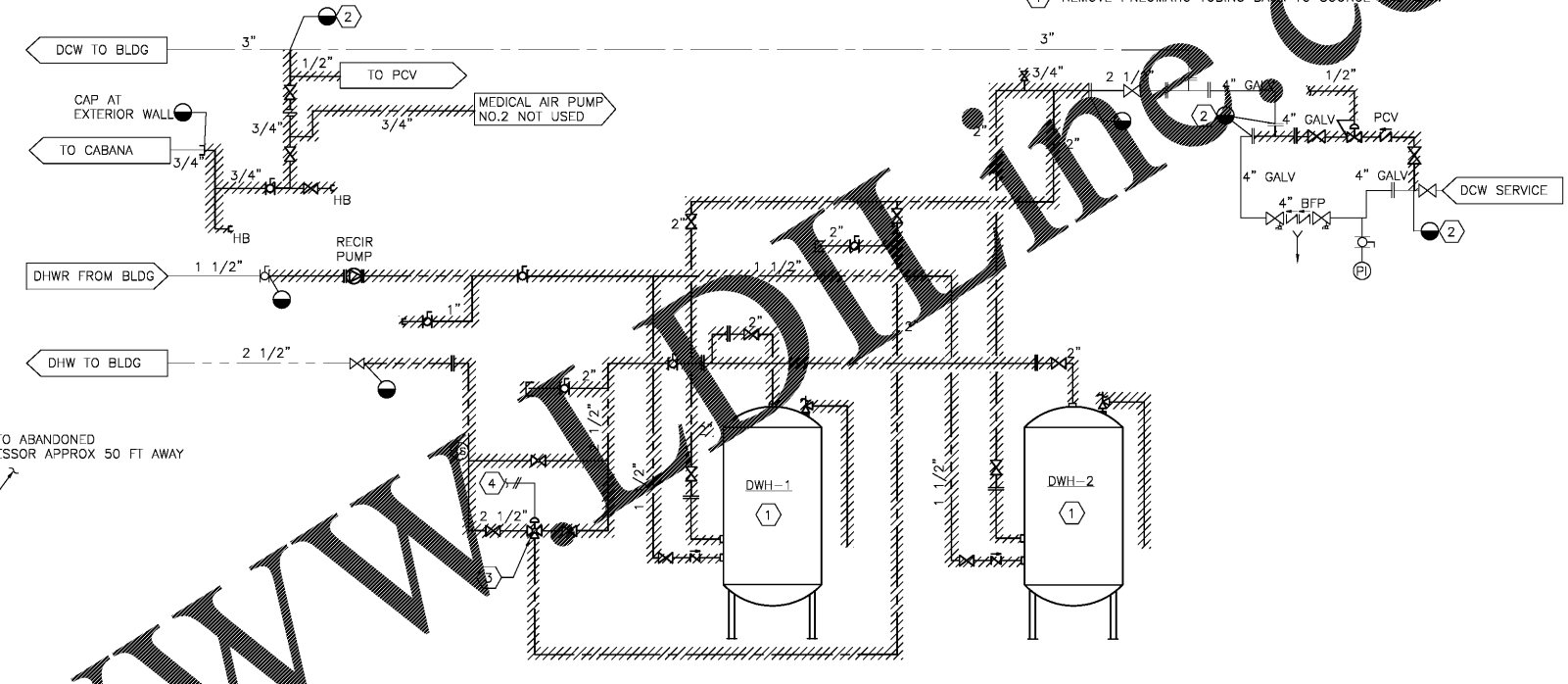


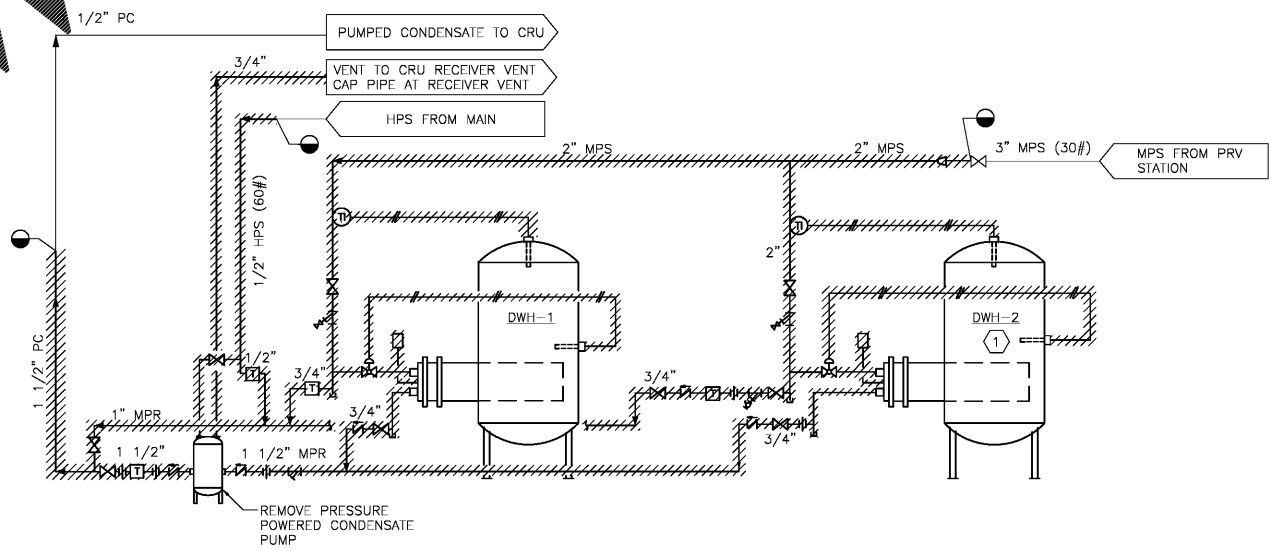
three inches = one foot
 one and one-half inches = one foot
 one inch = one foot
 three-quarters inch = one foot
 one-half inch = one foot
 three-quarters inch = one foot
 one-half inch = one foot
 one-quarter inch = one foot
 three-eighths inch = one foot
 one-quarter inch = one foot
 one-eighth inch = one foot



PLAN NORTH
 1 ENLARGED SUB-BASEMENT PLUMBING DEMOLITION PLAN
 SCALE: 1/2" = 1'-0"



A BLDG 77 WATER SERVICE AND DOMESTIC WATER HEATERS DOMESTIC WATER DEMOLITION DIAGRAM
 NO SCALE



B BLDG 77 DOMESTIC WATER HEATERS STEAM AND CONDENSATE DEMOLITION DIAGRAM
 NO SCALE

- GENERAL NOTES:**
1. REMOVE ONE DOMESTIC WATER HEATER AND INSTALL NEW WATER HEATER PRIOR TO REMOVING SECOND WATER HEATER.
- DEMOLITION NOTES:**
- 1 REMOVE VERTICAL STORAGE STEAM FIRED DOMESTIC WATER HEATER AND ASSOCIATED PIPING, VALVING AND ACCESSORIES.
 - 2 REMOVE 4" GALVANIZED STEEL TEE FROM 4" DOWNSTAIR AND PROVIDE NEW 4" PIPING AND FIBERGLASS INSULATION.
 - 3 REMOVE 3-WAY PNEUMATIC MIXING VALVE CONTROLS INCLUDING TEMPERATURE SENSOR, CONTROL WIRING, CONDUIT WIRING, AND TUBING.
 - 4 REMOVE PNEUMATIC TUBING BACK TO SOURCE OF SUPPLY.

Order Plans

Revisions	Date	Atrix Atrix, plc 102 3rd Avenue, NE PO Box 1628, Hickory, NC 28603 Phone: 828.315.9962 Fax: 828.315.9964 www.atraxisgroup.com	WileyWilson WileyWilson 127 Natterville Drive Lynchburg, VA 24502 Phone: 434.947.1901 www.wileywilson.com		Approved: Energy Engineer	Approved: Safety Manager	Approved: Service Chief	Drawing Title	Project Title	Date
					CONSTRUCTION DOCUMENTS	Approved: Infection Control Officer	Approved: Chief of Staff	PD-77-401 BLDG 77 ENLARGED SUB-BASEMENT PLUMBING PLAN DEMOLITION	RENOVATE FOR WATER QUALITY	04/28/2017
					Approved: GEMS Coordinator	Approved: Associate Director	Approved: Chief of Facility Management Svcs.	Building Number	Checked	Drawn
							Approved: Medical Center Director	77	MJG	JFC
								Location		
								VA MEDICAL CENTER, SALEM, VA 24153		
										DRAWING SET 2592 Dwg. 82 Of 155

Veterans Affairs