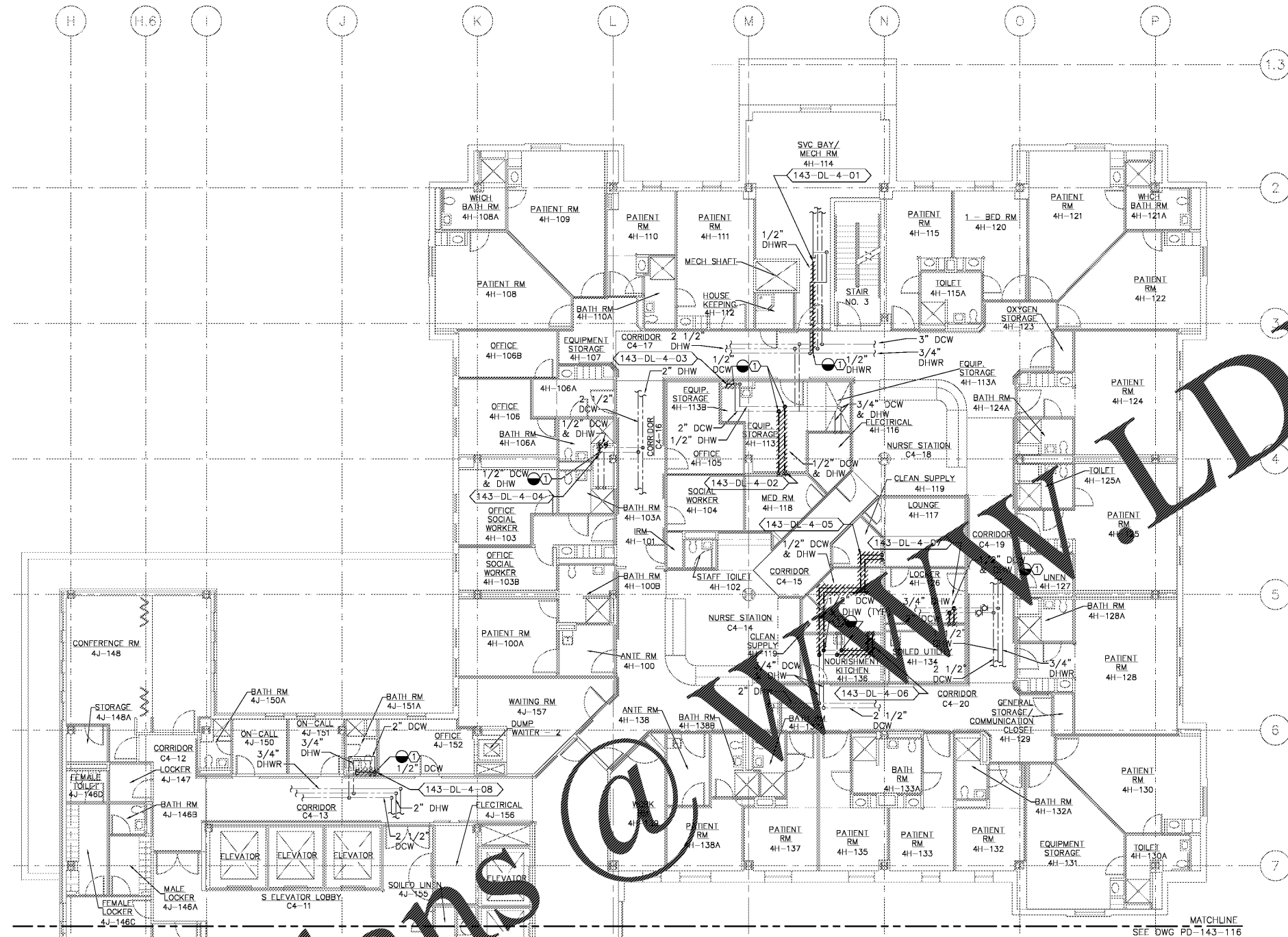


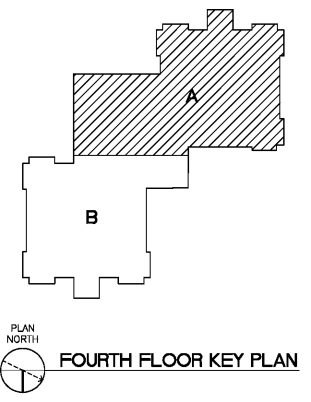
**DEMOLITION NOTES:**

- ① REMOVE DEADLEG BACK TO MAIN, REMOVE TEE FROM MAIN AND PROVIDE NEW PIPING AND FLEXIBLE ELASTOMERIC INSULATION.

three inches = one foot  
 one and one-half inches = one foot  
 one inch = one foot  
 three-quarters inch = one foot  
 one-half inch = one foot  
 three-eighths inch = one foot  
 one-quarter inch = one foot  
 one-eighth inch = one foot



PLAN NORTH  
 ① FOURTH FLOOR PLUMBING DEMOLITION PLAN - AREA 'A'  
 SCALE: 1/8" = 1'-0"



Order Plans @ www.wildline.com

Revisions	Date

**Atrix**  
 Atrix, plc  
 102 3rd Avenue, NE  
 PO Box 1628,  
 Hickory, NC 28603  
 Phone: 828.315.9962  
 Fax: 828.315.9964  
 www.atrigrp.com

**WileyWilson**  
 WileyWilson  
 127 Nationwide Drive  
 Lynchburg, VA 24502  
 Phone: 434.947.1901  
 Fax: 434.947.1901  
 www.wileywilson.com



Approved: Energy Engineer	Approved: Safety Manager
	Approved: Infection Control Officer
<b>CONSTRUCTION DOCUMENTS</b>	Approved: GEMS Coordinator

Approved: Service Chief	Approved: Chief of Staff
	Approved: Associate Director

Drawing Title PD-143-115 BLDG 143 FOURTH FLOOR PLUMBING PLAN AREA 'A' DEMOLITION
Approved: Chief of Facility Management Svc.
Approved: Medical Center Director

Project Title RENOVAE FOR WATER QUALITY	Date 04/28/2017
Building Number 143	Project No. 658-15-101
Checked MJG	Drawn WJC
Location VA MEDICAL CENTER, SALEM, VA 24153	DRAWING SET 2592 Dwg. 67 Of 155

Veterans Affairs