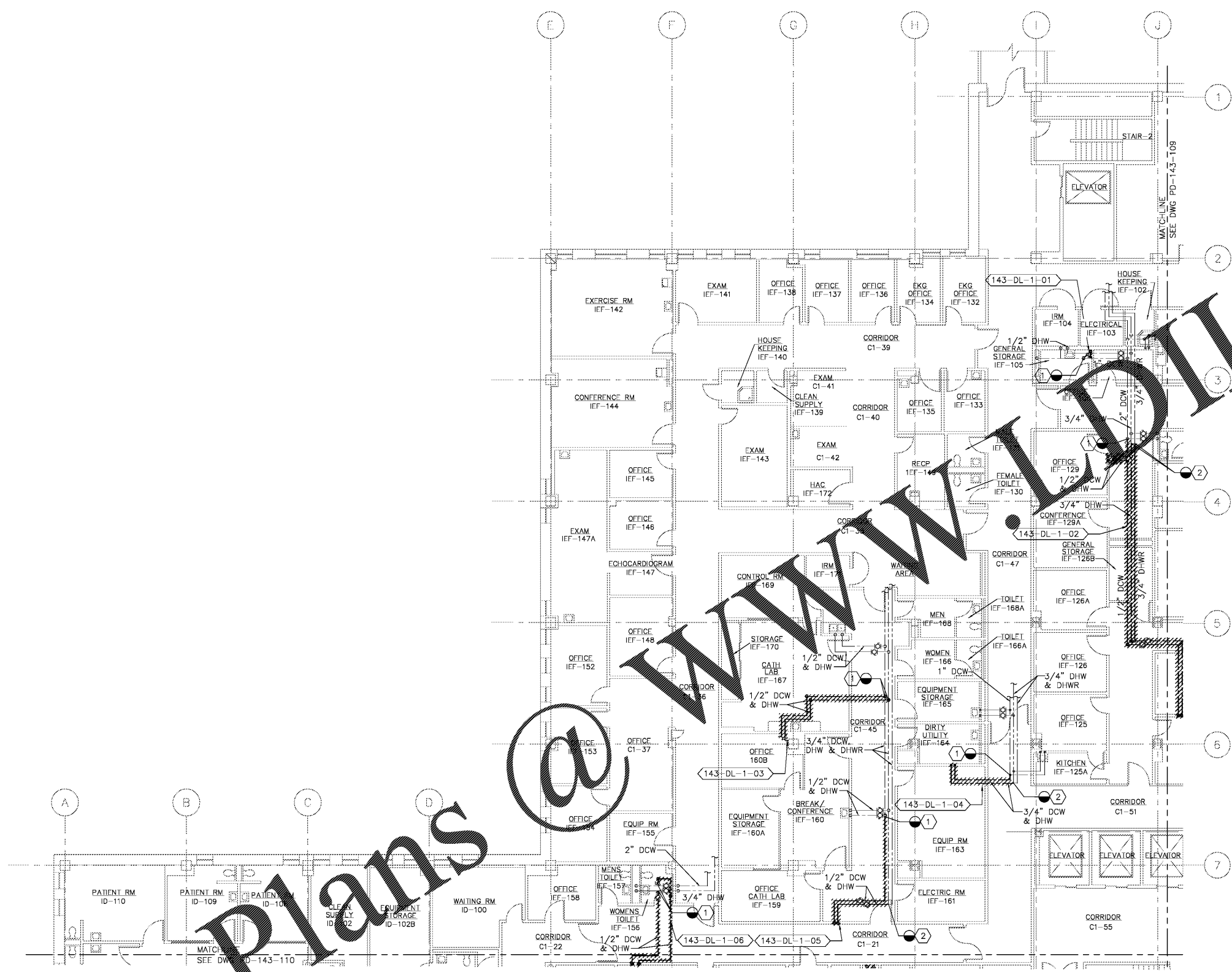


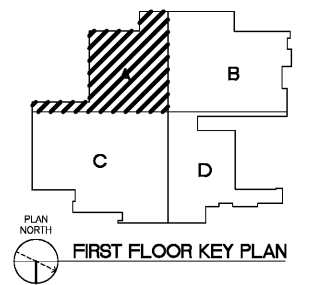
three inches = one foot
 one and one-half inches = one foot
 one inch = one foot
 three-quarters inch = one foot
 one-half inch = one foot
 three-eighths inch = one foot
 one-quarter inch = one foot
 one-eighth inch = one foot

DEMOLITION NOTES:

- ① REMOVE DEADLEG BACK TO MAIN. REMOVE TEE FROM MAIN AND PROVIDE NEW PIPING AND FLEXIBLE ELASTOMERIC INSULATION.
- ② CONNECT DHWR TO DHW TO MAINTAIN RECIRCULATING SYSTEM.



1 FIRST FLOOR PLUMBING DEMOLITION PLAN - AREA 'A'
 SCALE: 1/8" = 1'-0"



Order Plans @ WWW.DLLine.com

Revisions Date	Atriox Atriox, LLC 102 3rd Avenue, NE PO Box 1628, Hickory, NC 28603 Phone: 828.315.9962 Fax: 828.315.9964 www.atrioxgroup.com	Wiley Wilson Wiley Wilson 127 Nationwide Drive Lynchburg, VA 24502 Phone: 434.947.1901 www.wileywilson.com	Approved: Energy Engineer CONSTRUCTION DOCUMENTS	Approved: Safety Manager Approved: Infection Control Officer Approved: GEMS Coordinator	Approved: Service Chief Approved: Chief of Staff Approved: Associate Director	Drawing Title PD-143-108 BLDG 143 FIRST FLOOR PLUMBING PLAN AREA 'A' DEMOLITION Approved: Chief of Facility Management Svcs. Approved: Medical Center Director	Project Title RENOVATE FOR WATER QUALITY Building Number 143 Location VA MEDICAL CENTER, SALEM, VA 24153	Date 04/28/2017 Project No. 658-15-101 DRAWING SET 2592 Dwg. 80 Of 155	Veterans Affairs