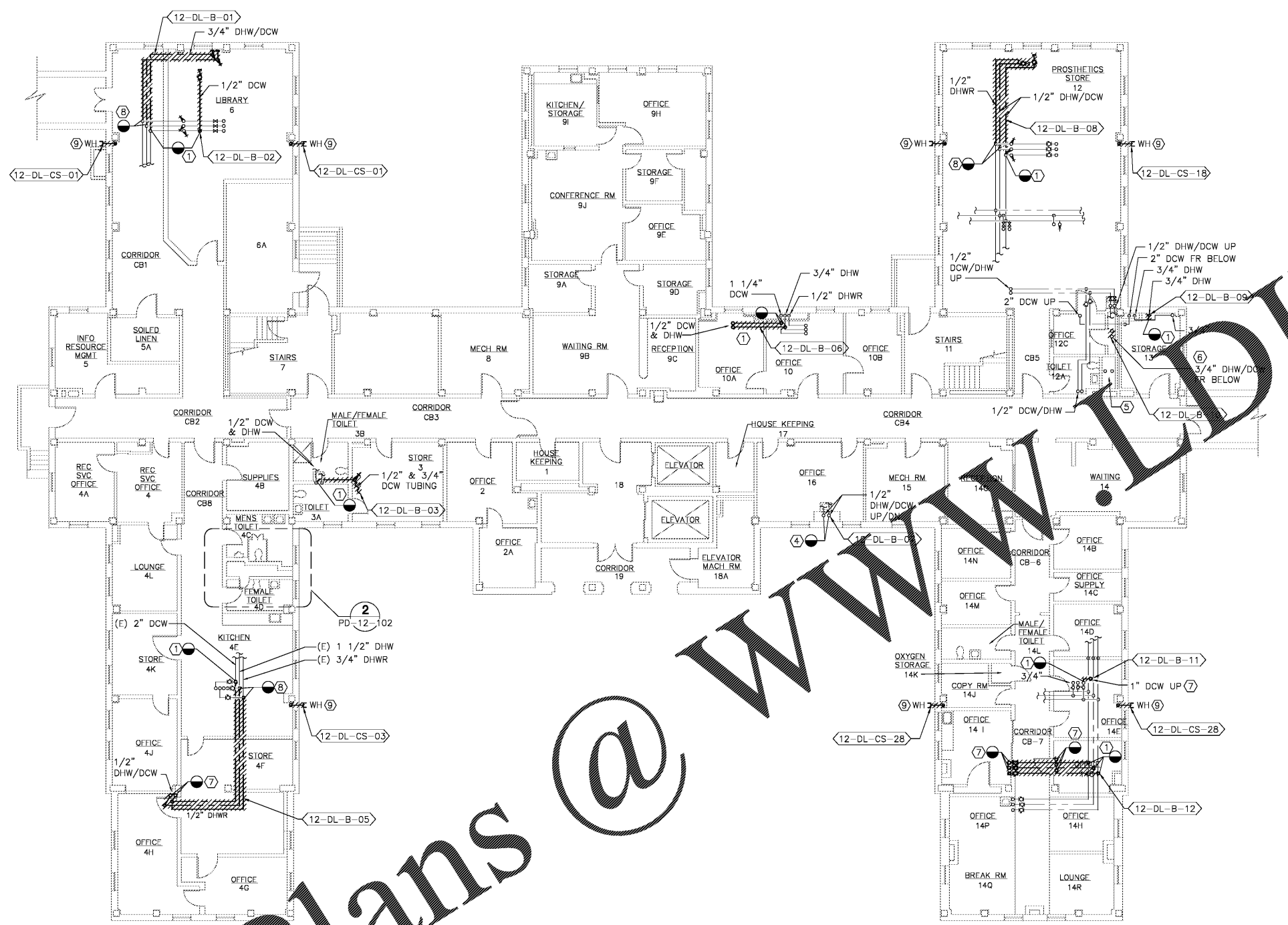
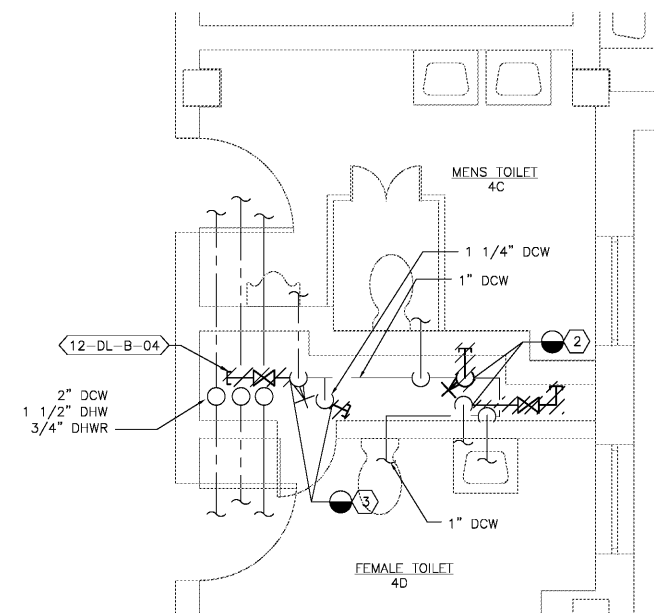


three inches = one foot  
 one and one-half inches = one foot  
 one inch = one foot  
 three-quarters inch = one foot  
 one-half inch = one foot  
 three-quarters inch = one foot  
 one-half inch = one foot  
 three-eighths inch = one foot  
 one-quarter inch = one foot  
 one-eighth inch = one foot



- DEMOLITION NOTES:**
- REMOVE DEADLEG BACK TO MAIN. REMOVE TEE FROM MAIN AND PROVIDE NEW PIPING AND FIBERGLASS INSULATION.
  - REMOVE (2) 1/2" DCW DEADLEGS BACK TO MAIN. REMOVE TEE FROM MAIN AND PROVIDE NEW PIPING AND FIBERGLASS INSULATION.
  - REMOVE 1/2" DHW DEADLEG AND 1" DCW DEADLEG BACK TO MAIN. REMOVE TEE FROM MAIN AND PROVIDE NEW PIPING AND FIBERGLASS INSULATION.
  - CUT AND CAP DCW AND DHW PAST FEED FOR LAVATORY. ABANDON PIPES THAT CONTINUE UP THRU FLOOR ABOVE. REMOVE DCW/DHW DEADLEGS BACK TO MAINS. REMOVE TEE FROM MAIN AND PROVIDE NEW PIPING AND INSULATION TO MATCH EXISTING. PATCH AND REPAIR WALL TO MATCH EXISTING.
  - REMOVE ALL DEADLEGS IN CHASE ORIGINATING FROM 1 1/4" DCW AND 3/4" DHW FEEDS FROM BELOW. CONNECTION TO WATER CLOSET AND LAVATORY IN TOILET 12A SHALL REMAIN. REMOVE APPROXIMATELY 10 FEET OF 3/4" DEADLEGS AND 4 FEET OF 1" DEADLEGS. REMOVE DEADLEGS BACK TO MAIN. REMOVE TEE FROM MAIN AND PROVIDE NEW PIPING AND FIBERGLASS INSULATION.
  - REMOVE 3/4" DCW/DHW DEADLEGS TOTALING APPROXIMATELY 16 FEET. REMOVE THERMO-STAT MIXING VALVE. FIELD VERIFY THAT NO FIXTURES ARE SERVED BY THESE FEEDS. FIRESTOP OPENING IN SLAB UPON REMOVAL OF PIPE.
  - CUT AND CAP PIPE AT FLOOR SLAB.
  - CONNECT DHW TO DHWR TO MAINTAIN RECIRCULATING SYSTEM.
  - OPEN CHASE WALL TO ALLOW ACCESS TO 3/4" DCW. REMOVE 3/4" DCW AND WH. PATCH CHASE WALL AND MASONRY WALL UPON REMOVAL OF WH TO MATCH EXISTING.

- GENERAL NOTES:**
- REFER TO THE DOMESTIC WATER DEAD LEG AND ASBESTOS ABATEMENT SCHEDULE FOR PIPING CONTAINING ASBESTOS INSULATION.



PLAN NORTH  
 1 BASEMENT PLUMBING DEMOLITION PLAN  
 SCALE: 1/8" = 1'-0"

PLAN NORTH  
 2 BASEMENT PLUMBING PARTIAL DEMOLITION PLAN  
 SCALE: 1/2" = 1'-0"

Order Plans @

Revisions	Date	<b>Atrix</b> Atrix, plc 102 3rd Avenue, NE PO Box 1628, Hickory, NC 28603 Phone: 828.315.9962 Fax: 828.315.9964 www.atraxisgroup.com	<b>WileyWilson</b> WileyWilson 127 Nantowite Drive Lynchburg, VA 24502 Phone: 434.947.1901 www.wileywilson.com		Approved: Energy Engineer	Approved: Safety Manager	Approved: Service Chief	Drawing Title	Project Title	Date	<b>Veterans Affairs</b>
					<b>CONSTRUCTION DOCUMENTS</b>	Approved: Infection Control Officer	Approved: Chief of Staff	PD-12-102 BLDG 12 BASEMENT PLUMBING PLAN DEMOLITION	RENOVATE FOR WATER QUALITY	04/28/2017	
					Approved: GEMS Coordinator	Approved: Associate Director	Approved: Chief of Facility Management Svcs.	Building Number	Checked	Drawn	DRAWING SET
							Approved: Medical Center Director	12	MJG	JPH	2592
								Location			Dwg. 45 Of 155
								VA MEDICAL CENTER, SALEM, VA 24153			