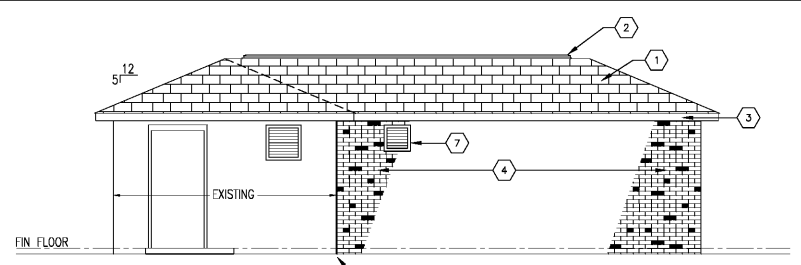
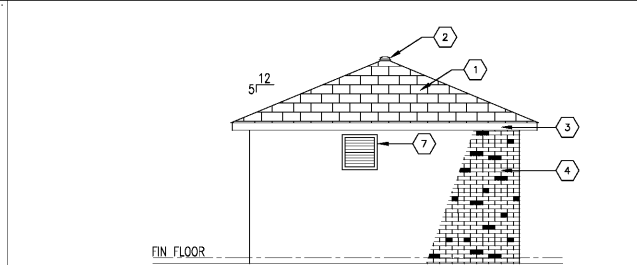


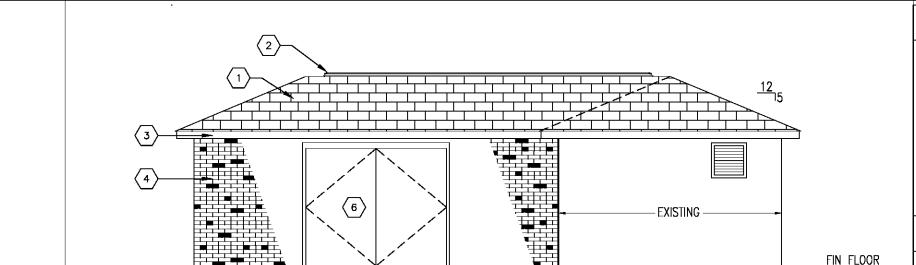
three inches = one foot  
 one and one-half inches = one foot  
 one inch = one foot  
 three-quarters inch = one foot  
 one-half inch = one foot  
 three-eighths inch = one foot  
 one-quarter inch = one foot  
 one-eighth inch = one foot



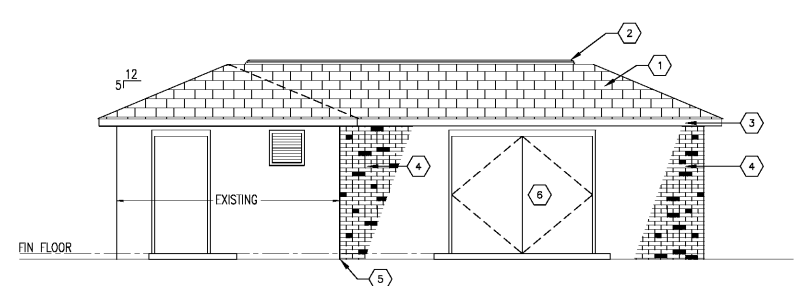
1 EXTERIOR ELEVATION - EAST  
 CITY OF SALEM PUMP HOUSE  
 BLDG. 173 - MIOX SUPPLY  
 SCALE: 1/4"=1'-0"



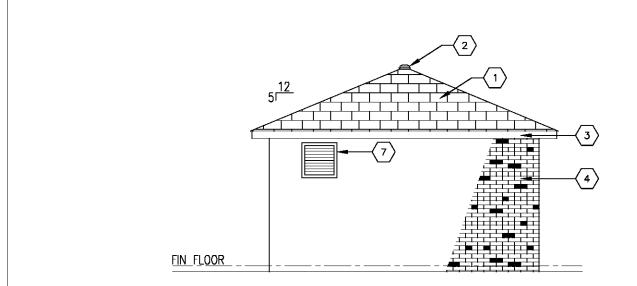
2 EXTERIOR ELEVATION - SOUTH  
 CITY OF SALEM PUMP HOUSE  
 BLDG. 173 - MIOX SUPPLY  
 SCALE: 1/4"=1'-0"



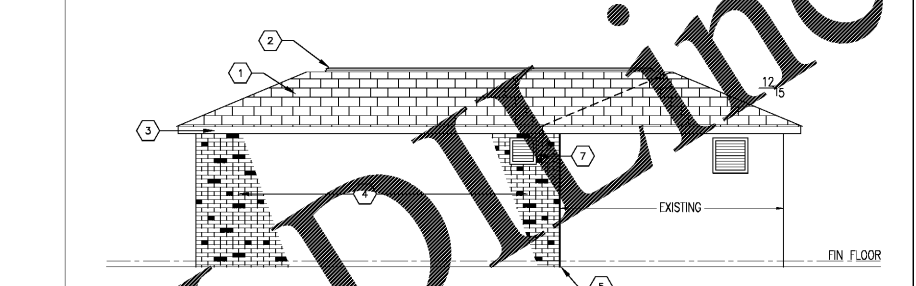
3 EXTERIOR ELEVATION - WEST  
 CITY OF SALEM PUMP HOUSE  
 BLDG. 173 - MIOX SUPPLY  
 SCALE: 1/4"=1'-0"



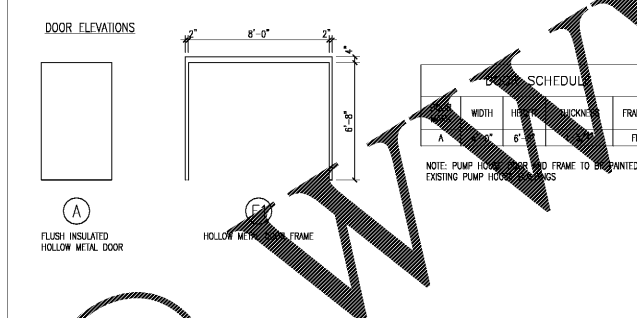
4 EXTERIOR ELEVATION - NORTH  
 WWA PUMP HOUSE  
 BLDG. 172 - MIOX SUPPLY  
 SCALE: 1/4"=1'-0"



5 EXTERIOR ELEVATION - EAST  
 WWA PUMP HOUSE  
 BLDG. 172 - MIOX SUPPLY  
 SCALE: 1/4"=1'-0"



6 EXTERIOR ELEVATION - SOUTH  
 WWA PUMP HOUSE  
 BLDG. 172 - MIOX SUPPLY  
 SCALE: 1/4"=1'-0"



7 DOOR ELEVATIONS AND SCHEDULE  
 SCALE: 1/4"=1'-0"

LINTEL SCHEDULE

MARK	SIZE	BEARING
L1	6" WIDE x 6" CMU BOND BEAM LINTEL REINFORCED w/2 #4 @ 12" ON CENTER HORIZONTAL BARS & GALV. 4"x8"x16" (LVL) @ BRICK	8" @ CMU 4" @ BRICK

LINTEL NOTES:  
 1. COORDINATE LINTELS w/ DOOR & LOUVER LOCATIONS.  
 2. SUBMIT FOR APPROVAL, SHOP DRAWINGS AND SCHEDULES SHOWING DETAILS, SIZE, & LOCATION FOR ALL LINTELS.  
 3. PROVIDE SOLID, GROUTED CELL REINFORCED w/1-#4 VERT. @ CMU LINTEL BEARING, #4 VERT. SHALL BE CONTINUOUS THRU END OF LINTEL.

8 LINTEL SCHEDULE  
 SCALE: NTS

**DEMOLITION NOTES**  
 REMOVE ALL EXISTING ASPHALT SHINGLES.  
 REMOVE EXISTING RIDGE VENT.

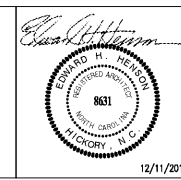
**SHEET KEYNOTE**  
 1. NEW ASPHALT SHINGLE ROOF.  
 NEW RIDGE VENT.  
 NEW ALUMINUM WRAPPED 2x FASCIA BOARD.  
 NEW FAIR BRICK VENEER. STYLE, PATTERN AND COLOR TO MATCH EXISTING.  
 2. EXPANSION JOINT. SEE DETAIL ON AE501.  
 3. PR. 4'-0" (W) x 6'-8" (H) HOLLOW METAL DOORS AND FRAME.  
 4. NEW MECHANICAL LOUVER. REFERENCE SHEETS M-101.

Order Plans @

Revisions	Date

**Atriax**  
 Atriax, plc  
 102 3rd Avenue, NE  
 Hickory, NC 28603  
 Phone: 828.315.9962  
 Fax: 828.315.9964  
 www.atriaxgroup.com

**WileyWilson**  
 WileyWilson  
 127 Nationwide Drive  
 Lynchburg, VA 24502  
 Phone: 434.947.1901  
 Fax: 434.947.1902  
 www.wileywilson.com



Approved: Energy Engineer

CONSTRUCTION DOCUMENTS

12/11/2015

Approved: Safety Manager

Approved: Infection Control Officer

Approved: GEMS Coordinator

Approved: Service Chief

Approved: Chief of Staff

Approved: Associate Director

Drawing Title  
 AE201  
 EXTERIOR ELEVATIONS - BLDGS. 172 & 173  
 DOOR SCHEDULE AND DETAILS

Approved: Chief of Facility Management Svcs.  
 Approved: Medical Center Director

Project Title  
 RENOVATE FOR WATER QUALITY

Building Number  
 172 & 173

Location  
 VA MEDICAL CENTER, SALEM, VA 24153

Date  
 4/28/2017

Project No.  
 658-15-101

DRAWING SET  
 2592

Dwg. 24 Of 155

Veterans Affairs