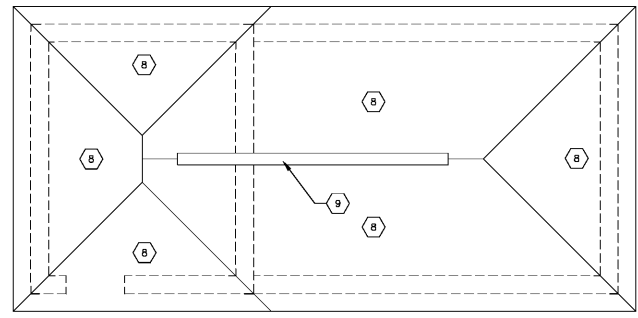
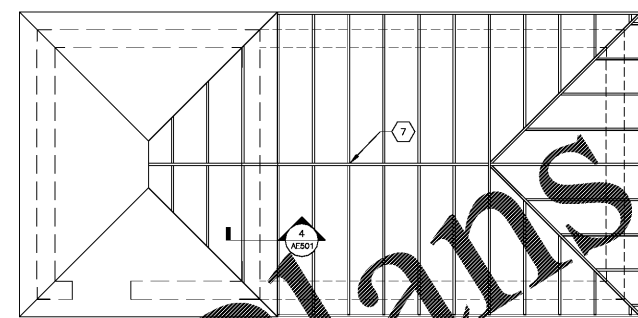


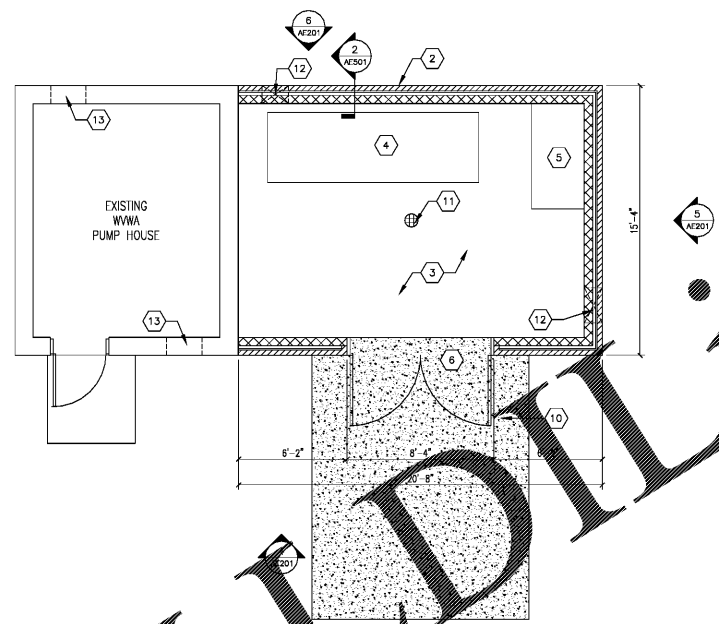
three inches = one foot
 one and one-half inches = one foot
 one inch = one foot
 three-quarters inch = one foot
 one-half inch = one foot
 three-eighths inch = one foot
 one-quarter inch = one foot
 one-eighth inch = one foot



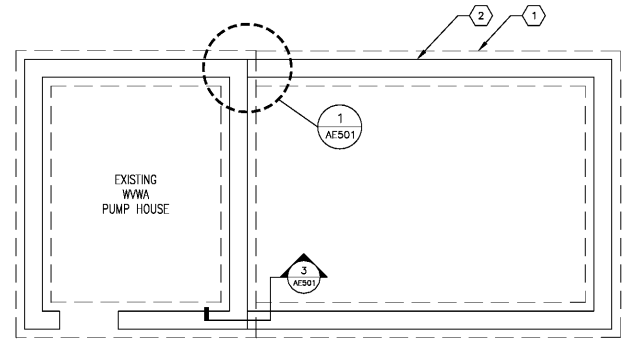
4 ROOF PLAN
 SCALE: 1/4"=1'-0"



ROOF FRAMING PLAN
 SCALE: 1/4"=1'-0"



2 FLOOR PLAN
 SCALE: 1/4"=1'-0"



1 FOUNDATION PLAN
 SCALE: 1/4"=1'-0"

DEMOLITION NOTES

- REMOVE ALL EXISTING ASPHALT SHINGLES FROM ROOF.

GENERAL NOTES

- REFERENCE CIVIL DRAWINGS FOR ADDITIONAL INFORMATION.
- REFERENCE AFS01 FOR SECTIONS AND DETAILS.
- REFERENCE MECHANICAL DRAWINGS FOR MECHANICAL EQUIPMENT, PIPING & LOUVER LOCATIONS.
- PROVIDE TYPE "L" UNITS OVER ALL DOORS AND COVERS.
- INTERIOR WALLS & CEILING TO BE PAINTED WHITE.

7 SHEET KEYNOTES

- 2'-0" (W) X 1'-0" (THICK) CONTINUOUS CONCRETE FOOTING REINFORCED WITH 3-#5 CONTINUOUS LONGITUDINAL BARS ON #5 @ 12" O.C. TRANSVERSE BARS @ BOTTOM OF FOOTING.
- 6" NOM. REINFORCED CMU WALL W/ BRICK VENEER & RIGID INSULATION
- 6" THICK CONCRETE SLAB ON GRADE REINFORCED W/ 6X6-W2.1/W2.1 WWF ON 6" THICK COMPACTED #57 STONE BASE.
- 4" CONC. HOUSEKEEPING PAD. REFERENCE CIVIL DRAWING FOR DIMENSIONS.
- FRP PUMP TABLE. REFERENCE CIVIL DRAWING.
- PR. 4'-0" (W) X 6'-8" (H) HOLLOW METAL DOORS AND FRAME.
- 2" X 6" CEILING AND ROOF RAFTERS @ 24" O.C. SEE SECTION DRAWINGS ON AFS01.
- ASPHALT SHINGLE ROOF. NEW TO MATCH EXISTING.
- RIDGE VENT
- CONCRETE SLAB ON GRADE. REFERENCE CIVIL DRAWINGS.
- 4" FLOOR DRAIN. REFERENCE CIVIL DRAWINGS.
- MECHANICAL LOUVERS - NEW. REFERENCE MECHANICAL DRAWINGS M-101.
- MECHANICAL LOUVERS - EXISTING.

Order Plans @ WWW.LDLine.com

Revisions	Date

Atriax
 Atriax, pllc
 102 3rd Avenue, NE
 Hickory, NC 28603
 Phone: 828.315.9962
 Fax: 828.315.9964
 www.atriaxgroup.com

WileyWilson
 WileyWilson
 127 Nationwide Drive
 Lynchburg, VA 24502
 Phone: 434.947.1901
 www.wileywilson.com



Approved: Energy Engineer
 Approved: Safety Manager
 Approved: Service Chief
 Approved: Infection Control Officer
 Approved: Chief of Staff
 Approved: GEMS Coordinator
 Approved: Associate Director

CONSTRUCTION DOCUMENTS

Approved: Energy Engineer
 Approved: Safety Manager
 Approved: Service Chief
 Approved: Infection Control Officer
 Approved: Chief of Staff
 Approved: GEMS Coordinator
 Approved: Associate Director

Approved: Energy Engineer
 Approved: Safety Manager
 Approved: Service Chief
 Approved: Infection Control Officer
 Approved: Chief of Staff
 Approved: GEMS Coordinator
 Approved: Associate Director

Project Title RENOVATE FOR WATER QUALITY	Date 4/28/2017
Project No. 658-15-101	DRAWING SET 2592
Building Number 172	Checked EHL
Location VA MEDICAL CENTER, SALEM, VA 24153	Drawn TLR
	Dwg. 21 Of 155

Veterans Affairs