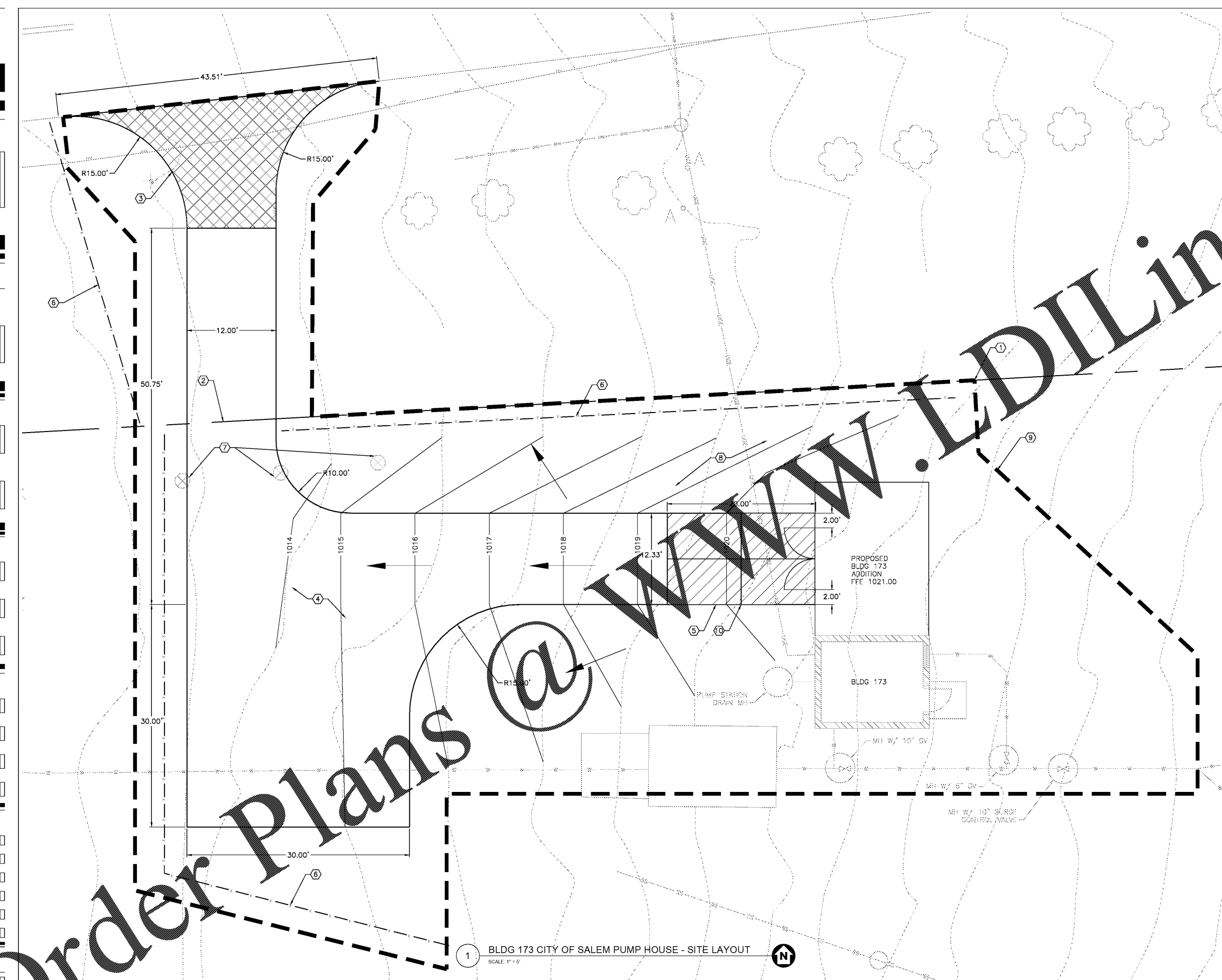


three inches = one foot
 one and one-half inches = one foot
 one inch = one foot
 three-quarters inch = one foot
 one-half inch = one foot
 three-eighths inch = one foot
 one-quarter inch = one foot
 one-eighth inch = one foot



LEGEND

	LIMIT OF DISTURBANCE
	MINOR CONTOUR
	MAJOR CONTOUR
	SILT FENCE
	FLOW ARROW
	ASPHALT PAVEMENT
	CONCRETE PAVEMENT

- SHEET KEYNOTES**
- EXISTING FENCE
 - EXISTING GATE
 - PROPOSED ASPHALT DRIVEWAY-1/CS501. COORDINATE WITH CITY OF SALEM BUILDING DEPARTMENT FOR DRIVEWAY PERMIT, AND RIGHT OF WAY PERMIT.
 - PROPOSED GRAVEL DRIVEWAY-4/CS501. NEW DRIVEWAY TO BE CENTERED AND PERPENDICULAR TO EXISTING GATE.
 - PROPOSED CONCRETE PAVEMENT-2/CS501.
 - SILT FENCE.
 - REMOVE EXISTING CONCRETE BOLLARDS, TYP 3
 - REMOVE EXISTING GRAVEL MOUNDS. IF IN SUITABLE CONDITION, MAY BE USED FOR NEW GRAVEL DRIVEWAY.
 - LIMIT OF DISTURBANCE - 0.20 ACRES
 - CONTROL JOINT. (TYP)

1 BLDG 173 CITY OF SALEM PUMP HOUSE - SITE LAYOUT
SCALE: 1" = 5'

Order Plans

WWW.LDILINE.COM

Revisions Date	 Atriax, pllc 102 3rd Avenue, NE Hickory, NC 28603 Phone: 828.315.9962 Fax: 828.315.9964 www.atriaxgroup.com	 WileyWilson 127 Nationwide Drive Lynchburg, VA 24502 Phone: 434.947.1901 www.wileywilson.com	 Approved: Energy Engineer	Approved: Safety Manager	Approved: Service Chief	Drawing Title CS102 BLDG 173 SITE LAYOUT	Project Title RENOVATE FOR WATER QUALITY	Date 4/28/2017	
	CONSTRUCTION DOCUMENTS			Approved: Infection Control Officer	Approved: Chief of Staff	Approved: Chief of Facility Management Svc.	Building Number 173	Checked WTH	Drawn WTH
				Approved: GEMS Coordinator	Approved: Associate Director	Approved: Medical Center Director	Project No. 658-15-101	DRAWING SET 2592	Dwg. 4 Of 155
	Location VA MEDICAL CENTER, SALEM, VA 24153						Veterans Affairs		