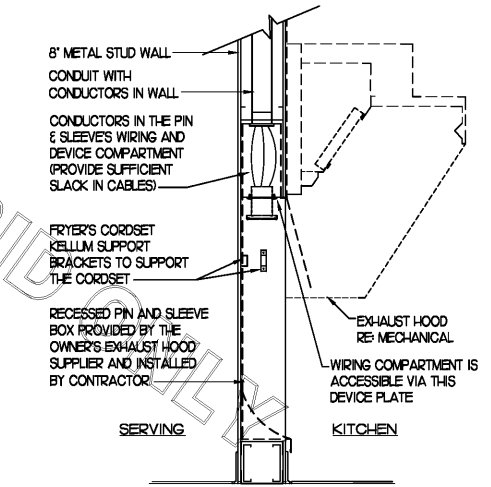


1 KITCHEN EQUIPMENT SCHEDULE - CHICK-FIL-A STORE #2593											
VERIFY THE QUANTITY OF EACH EQUIPMENT ITEM WITH THE KITCHEN EQUIPMENT SCHEDULE ON SHEET K21											
REQUIRES	EQUIP. NO.	EQUIPMENT DESCRIPTION	ELECTRICAL LOAD					NEMA	COOPER/ARROW HART (LION RECEPT. CAT. NO.)	WIRE/CONDUIT MARK NO.	COMMENTS AND REMARKS
			VOLTS	PH	WIRES	KW	AMPS				
IG / NOTES 5 & 7	183	ORDER MONITOR	120	1	2		0.25	5-20R	IG5362N (ORANGE)	HIG	
	269	ANSUL FIRE SYSTEM	120	1	2		VERIFY	DIRECT	-	1	FED FROM CFA-T500 PANEL
	270	EXISTING ANSUL FIRE SYSTEM	120	1	2		VERIFY	DIRECT	-	1	FED FROM CFA-T500 PANEL
NOTES 2 & 7	400	REACH-IN FRY FREEZER	120	1	2		14.9	5-20R	VGF20	1	
NOTE 5	402	60" FRY FREEZER WORK TABLE	120	1	2		7.3	L5-20R	CWL520R	1	PROVIDE TWIST LOCK PLUG IN FIELD
NOTES 5 & 7	420	SINGLE UC REFRIGERATOR	120	1	2	0.225	3.3	5-20R / L5-20R	1877 / CWL520R	1	
NOTES 2 & 7	421	DOUBLE UC REFRIGERATOR	120	1	2	0.480	5.7	5-20R	TR780W (DUPEX)	1	
NOTE 5	432	REFRIGERATED WORK TABLE	120	1	2	0.480	5.7	L5-20R	CWL520R	1	PROVIDE TWIST LOCK PLUG IN FIELD
NOTES 2 & 7	439	COLD RAIL	120	1	2		7.1	5-20R	VGF20	1	
NOTES 2 & 7	440	BREADING TABLE	120	1	2		12.0	L5-20R	CWL520R	1	PROVIDE TWIST LOCK PLUG IN FIELD
NOTES 2 & 7	441	REFRIGERATED SALAD PREP	120	1	2		9.0	L5-20R	CWL520R	1	PROVIDE TWIST LOCK PLUG IN FIELD
NOTES 2 & 7	442	REFRIGERATED DISPLAY CASE	120	1	2		9.0	5-20R	CR20	1	
NOTE 7	444	DOUBLE DOOR THAWING CABINET	120	1	2		16.0	DIRECT	-	1	SEE DETAIL FOR DIRECT CONNECTION
NOTE 7	444S	SINGLE DOOR THAWING CABINET	120	1	2		16.0	DIRECT	-	1	SEE DETAIL FOR DIRECT CONNECTION
NOTES 5 & 7	500A	VERTICAL CONTACT TOASTER	120	1	2	1.800	15.0	5-20R	CR20	4	
NOTE 7	500B	RADIANT TOASTER	208	1	3	5.000	24.0	L6-30R	1234	7	
NOTE 7	5056	GRIDDLE TOP CONVECTION OVEN	208	3	3	19.800	57.6	I5-60R	AH8460N	17	PROVIDE 6 FT CORD AND ANGLE PLUG
NOTE 7	505H	CONVECTION OVEN	208	3	3	19.800	57.6	I5-60R	AH8460N	17	PROVIDE 6 FT CORD AND ANGLE PLUG
NOTES 3 & 7	522	OPEN FRYER - ELECTRIC	208	3	3	22.000	6.1	NOTE 3	-	22	PLUG AND CORD-SET PROVIDED W/ EQUIP
NOTE 7	523	PRESSURE FRYER - ELECTRIC	208	3	3	13.500	38.0	I5-50R	HUBBELL HBL8450A	14	PLUG AND CORD-SET PROVIDED W/ EQUIP
NOTE 7	524	CHAR-GRILL (DUAL-SIDED)	208	3	3	16.050	43.4 / 43.4 / 47	I5-50R	HUBBELL HBL8450A	14	
NOTES 5 & 7	550	DOUBLE WARMING DRAWER	120	1	2	1.000	8.3	5-20R	EXISTING	1	
NOTES 2 & 7	560	FRY HOLDING STATION	120	1	2	1.840	15.4	5-20R	VGF20	1	
NOTES 5 & 7	562A	HOT HOLDING TOWER	120	1	2	1.911	15.9	L5-20R	CWL520R	1	PROVIDE TWIST LOCK PLUG IN FIELD
NOTE 5	563	SANDWICH SLIDE	208	1	3		9.2	L14-20R	EXISTING	2	
NOTES 2 & 7	564	PRODUCT HOLDING CABINET	120	1	2	1.600	13.3	L5-20R	CWL520R	1	PROVIDE TWIST LOCK PLUG IN FIELD
NOTE 7	565C	FOOD WARMING WELL	120	1	2	1.500	12.5	DIRECT	CWL520R	4	PROVIDE TWIST LOCK PLUG IN FIELD
NOTE 5	560H	MULTI-USE HOLDING CABINET	120	1	2	2.040	16.0	L5-20R	CWL520R	1	PROVIDE TWIST LOCK PLUG IN FIELD
NOTES 5 & 7	600	FLOOR MIXER	120	1	2		8.0	L5-20R	CWL520R	1	PROVIDE TWIST LOCK PLUG IN FIELD
NOTES 5 & 7	601	1/2 HP FOOD CUTTER	120	1	2		16.0	L5-20R	CWL520R	1	PROVIDE TWIST LOCK PLUG IN FIELD
		WIRING DEVICE PACKAGE, INCLUDING SWITCHES (EXCEPT HUBBELL BRAND DEVICES) SHALL BE PURCHASED AS A PART OF A NATIONAL ACCOUNTS PROGRAM THROUGH GEXPRO (FORMERLY GE SUPPLY). CONTACT WAYNE SANDERS AT 770-840-4178 (EMAIL: WAYNESANDERS@GEXPRO.COM)									
NOTE 1		ALL 50' CORD LENGTHS SHALL BE MEASURED FROM THE REAR OF THE EQUIPMENT TO THE END OF THE CORD.									
NOTE 2		CONTRACTOR SHALL PROVIDE GROUND-FAULT PROTECTION FOR ALL 120 VOLT 20 AMP RECEPTACLES IN THE KITCHEN / FOOD PREPARATION AREAS. GROUND-FAULT PROTECTION SHALL BE PROVIDED AT THE RECEPTACLE AS A GFCI TYPE RECEPTACLE UNLESS NOTED OTHERWISE ON THE PLANS WHERE A GFCI TYPE BREAKER IS INDICATED.									
NOTE 3 (NOT USED)		A RECESSED PIN & SLEEVE BOX IS PROVIDED WITH THE EXHAUST HOOD PACKAGE AND INSTALLED BY THE CONTRACTOR. THE P&S BOX INCLUDES THE 'SLEEVE' RECEPTACLES FOR THE OPEN FRYERS. THE OPEN FRYER SUPPLIER WILL PROVIDE PRE-WIRED CORDSET WITH A 'PIN' DEVICE INTEGRAL WITH THE OPEN FRYER TO PLUG INTO THE 'SLEEVE' RECEPTACLE.									
NOTE 4		WIRE NUMBER INDICATED DOES NOT INCLUDE THE REQUIRED GREEN EQUIPMENT GROUND CONDUCTOR OR, WHEN APPLICABLE, THE STRIPED IG CONDUCTOR.									
NOTE 5		PROVIDE GFCI TYPE BRANCH BREAKER FOR KITCHEN/FOOD PREPARATION AREA RECEPTACLES THAT ARE LOCKING, CLOCK, SPLIT-WIRED, OR IG TYPE OR A RECEPTACLE FURNISHED IN THE CENTERLINE TABLE BY FRANKIE FOODSERVICE SYSTEMS THAT IS NOT A GFCI TYPE RECEPTACLE.									
NOTE 6		REFER TO THE CONDUIT AND CONDUCTOR SCHEDULE FOR THE WIRE/CONDUIT MARK NUMBER AND THE MINIMUM WIRE AND CONDUIT SIZE FOR EACH EQUIPMENT ITEM.									
NOTE 7		THE 'R' SUBSCRIPT ON EQUIPMENT NUMBERS ON THE KITCHEN SERIES DRAWINGS REFERS TO EXISTING EQUIPMENT THAT HAS BEEN RELOCATED. IN SEVERAL CASES THERE MAY BE ONE OR MORE NEW AND ONE OR MORE RELOCATED ITEMS. THEREFORE, IN ORDER TO AVOID CONFUSION, ALL EQUIPMENT IS LISTED AS 'NEW' AND THIS SUBSCRIPT IS NOT USED. FIELD VERIFY ELECTRICAL REQUIREMENTS - WHAT IS INDICATED IS PROTOTYPICAL.									

2 ELECTRICAL LEGEND					
SYMBOL	DESCRIPTION	MTG HT AFF TO CL	SYMBOL	DESCRIPTION	MTG HT AFF TO CL
LIGHTING FIXTURES					
□	SURFACE MTD FLUORESCENT LIGHTING FIXTURE		—	CONDUIT CONCEALED ABOVE CEILING OR IN WALL	
◻	RECESSED FLUORESCENT LIGHTING FIXTURE		—	CIRCUIT HOMERUN TO PANELBOARD WITH MINIMUM 2#12, #12G, 3/4" C	
○	SURFACE MTD FLUORESCENT OR HID LIGHTING FIXTURE		—	CONDUIT TURNING UP	
◉	RECESSED FLUORESCENT OR HID LIGHTING FIXTURE		—	CONDUIT TURNING DOWN	
◉	WALL MOUNTED LIGHTING FIXTURE, SEE LIGHTING FIXTURE SCHEDULE (FLUORESCENT OR HID FIXTURE)	AS NOTED	—	CONDUIT CONCEALED IN OR BELOW SLAB (OUTSIDE UNDERGROUND)	
◉	WALL MOUNTED EXIT SIGN, SHADING INDICATES FACES, PROVIDE WITH CEILING DIRECTIONAL ARROWS WHERE INDICATED ON PLANS PROVIDED WITH BATTERY PACK	6" BELOW CEILING TO TOP	—	FLEXIBLE LIGHT FIXTURE WHIP, SIX FOOT MAXIMUM LENGTH	
◉	CEILING MOUNTED EXIT SIGN, SHADING INDICATES FACES, PROVIDE WITH CEILING DIRECTIONAL ARROWS WHERE INDICATED ON PLANS PROVIDED WITH BATTERY PACK		—	METAL CLAD CABLE ASSEMBLY - ONE WHERE INDICATED ON DWGS OR SPECS	
◉	COMBO EXIT WITH TWO LAMP-HEADS, SEE LIGHTING FIXTURE SCHEDULE		NOTE	FOR ALL CONDUITS REFER TO PLANS FOR OTHER CONDUITS, REFER TO VENDOR DRAWINGS FOR CONDUIT SCHEDULING REQUIREMENTS FOR LOW VOLTAGE CIRCUITS AND CONTROL WIRING	
◉	WALL MOUNTED EMERGENCY BATTERY PACK LIGHTING FIXTURE	AS NOTED	NOTE	MULTIPLE PHASES SHALL OCCUPY THE SAME CONDUIT IN ACCORDANCE WITH NEC, MAXIMUM OF THREE PHASES	
◉	CEILING MOUNTED EMERGENCY BATTERY PACK LIGHTING FIXTURE			LOW VOLTAGE AND CONTROL WIRING SHALL BE IN SEPARATE CONDUIT FROM POWER WIRING	
—	FLUORESCENT STRIP LIGHTING FIXTURE		DISTRIBUTION EQUIPMENT		
◉	WALL-WASHER STYLE RECESSED DOWNLIGHT, AIM LIGHT TOWARD WALL		◉	NON-FUSIBLE SAFETY SWITCH, SIZE AND TYPE AS NOTED ON PLANS (AMP/POLES/ENCLOSURE) OR ON SCHEDULE, NEMA 1 ENCLOSURE UNLESS NOTED W/ WP FOR NEMA 3R ENCLOSURE	6'-6"
◻	RECESSED LIGHTING FIXTURE WITH EMERGENCY BATTERY PACK		◉	FLUSH MOUNTED LIGHTING PANELBOARD	6'-6"
◉	PENDANT LIGHTING FIXTURE	AS NOTED	◉	SURFACE MOUNTED LIGHTING PANELBOARD	6'-6"
—	LIGHTING TRACK WITH TRACK HEADS		◉	TRANSFORMER, PROVIDE SECONDARY GROUNDING PER NEC	
WIRING DEVICES					
◉	120 VOLT DUPLEX RECEPTACLE, 20 AMP, 150N	18"	◉	ENCLOSED CIRCUIT BREAKER, SIZE AND TYPE AS NOTED (AMPS/POLES/ENCLOSURE) NEMA 1 ENCLOSURE IF NOT NOTED, WP-NEMA 3R	6'-6"
◉	120 VOLT DUPLEX AT SPECIAL MOUNTING HEIGHT, 20 AMP, 150N	44" UN			
◉	120 VOLT QUADPLEX RECEPTACLE, 20 AMP, 150N	18" UN			
◉	120 VOLT QUADPLEX AT SPECIAL MOUNTING HEIGHT, 20 AMP, 150N	44"			
◉	120 VOLT SIMPLEX RECEPTACLE, 20 AMP, 150N	18" UN			
◉	SINGLE SPECIAL PURPOSE RECEPTACLE WITH VOLTS, AMPS, AND PHASE AS NOTED, NEMA CONFIGURATION AS REQUIRED BY EQUIPMENT	18" UN			
◉	RECEPTACLE MOUNTED OVER CORD DROP, 120 VOLT, 20 AMP, UNCL, UTILET BOX FLUSH WITH CEILING				
◉	SINGLE POLE TOGGLE SWITCH	48"	MISCELLANEOUS SYMBOLS		
◉	DOUBLE POLE TOGGLE SWITCH	48"	⊥	GROUND	
◉	THREE WAY TOGGLE SWITCH	48"	Ⓜ	MOTOR	
◉	MANUAL MOTOR STARTER SWITCH (WP-NEMA 3R)	48"	Ⓢ	EXHAUST FAN MOTOR	
◉	SWITCH WITH PILOT LIGHT (ON WHEN SWITCH IS ON)	48"	Ⓧ	JUNCTION BOX	
◉	KEY OPERATED SWITCH	48"	Ⓛ	CONDUIT AND WIRE MARK NUMBER, REFER TO CONDUCTORS AND CONDUIT SCHEDULE FOR SIZE	
NOTE: RECEPTACLES ON A DEDICATED CIRCUIT (THAT IS, NO OTHER LOAD CONNECTED TO THE BRANCH CIRCUIT) SHALL HAVE AMPACITY RATING NOT LESS THAN THE AMPERAGE OF THE CIRCUIT BREAKER SERVING THE DEVICE.					
ABBREVIATIONS					
AFF	ABOVE FINISHED FLOOR		Ⓛ	NOTE NUMBER	
AFG	ABOVE FINISHED GRADE		Ⓛ	HOOD EXTINGUISHING ANSUL PULL STATION	
AHU	AIR HANDLING UNIT		Ⓛ	SMOKE DETECTORS REMOTE STATUS INDICATOR W/ 1/2" CONDUIT STUB-UP	
C	CONDUIT		Ⓛ	PUSH-BUTTON	
CL	CENTER-LINE		Ⓛ	BELL TYPE AS NOTED ON PLANS	
EF	EXHAUST FAN		Ⓛ	PHOTO-ELECTRIC CELL	
FLA	FULL-LOAD AMPS		TELEPHONE		
GF/GFI	GROUND FAULT CIRCUIT INTERRUPTER		Ⓛ	TELEPHONE OUTLET	18" UN
GND/GRD	GROUND		Ⓛ	TELEPHONE OUTLET AT SPECIAL MOUNTING HEIGHT	60" UN
HT	HEIGHT		NOTE: EACH TELEPHONE OUTLET (FLOOR OR WALL MOUNTED) SHALL BE PROVIDED WITH A 3/4" EMPTY CONDUIT, WITH PULL WIRE, TO ACCESSIBLE CEILING SPACE.		
IG	ISOLATED GRD, PROVIDE ORANGE DEVICE WHEN ADJACENT TO WIRING DEVICE		CCTV / SECURITY SYSTEM		
MOCP	MAXIMUM OVER-CURRENT PROTECTION		Ⓛ	CLOSED CIRCUIT TELEVISION CAMERA	
MJA	MAKE UP AIR UNIT		Ⓛ	SECURITY ALARM KEYPAD	
NEC	LOCALLY ADOPTED EDITION OF THE NATIONAL ELECTRICAL CODE (NFPA 70)		Ⓛ	SECURITY ALARM HOLD-UP BUTTON	
NL	NIGHT LIGHT (ON 24 HOURS)		Ⓛ	SECURITY SYSTEM KEY NOTE	
OC	ON CENTER				
POS	POINT OF SALE EQUIPMENT				
RTU	ROOF TOP UNIT				
TL	TWIST-LOCK TYPE DEVICE				
TR	TAMPER-RESISTANT				
UN	UNLESS OTHERWISE NOTED				
WP	WEATHER-PROOF (NEMA 3R)				

3 PIN & SLEEVE BOX DETAIL

NO SCALE



5200 Buffington Rd.
Atlanta Georgia,
30349-2998

Revisions:

Mark	Date	By
△	06.30.17	ISSUED FOR PERMIT
△	07.11.17	ISSUED FOR BID
△		

Seal

01-11-17

Kurzynske & Associates
CONSULTING ENGINEERS
2900 Lebanon Pike, Ste 201
Nashville, Tennessee 37214
Telephone: (615) 255-5203
Fax: (615) 255-5207
Email: mail@kurzynske.com

STORE #02593
HOUSTON ROAD FSU

4980 HOUSTON RD
FLORENCE, KY
41042

SHEET TITLE
SCHEDULES
AND DETAILS

VERSION: S08C-R
ISSUE DATE: 05.2017

Job No. : 17091.CD.R
Store : 02593
Date: : 06.30.17
Drawn By : RW
Checked By : MK
Sheet

E.I.

Order Plans @

@

FOR BIDDING ONLY

FOR BIDDING ONLY