

Chick-fil-A

5200 Buffington Rd.
Atlanta Georgia,
30349-2998

Revisions:

Mark Date By
△ 06.30.17
ISSUED FOR PERMIT

Mark Date By
△ 07.11.17
ISSUED FOR BID

Mark Date By
△

Seal

STATE OF KENTUCKY
MARK L. KURZYNSKE
19254
01-11-17

Kurzynske & Associates
CONSULTING ENGINEERS
2900 Lebanon Pike, Ste 201
Nashville, Tennessee 37214
Telephone: (615) 255-5203
Fax: (615) 255-5207
Email: mail@kurzynske.com

STORE #02593
HOUSTON ROAD FSU

4980 HOUSTON RD
FLORENCE, KY
41042

SHEET TITLE
HOOD DETAILS
& SCHEDULES

VERSION: S08C-R
ISSUE DATE: 05.2017

Job No.: :17091.CD.R
Store #: :02593
Date: :06.30.17
Drawn By: :_BM
Checked By: :_MK

Sheet
M2.I

HOOD SCHEDULE

MARK	EXHAUST CFM	SP # TAB PORT	CAPTURE JET CFM & SP.	TYPE	COLLAR SIZE	WIDTH	DEPTH	HEIGHT	MANUFACTURER	MODEL	REMARKS
HOOD#2	701	0.26'	30 * 0.29'	BACK SHELF	8"x8"	45"	34"	38"	HALTON	KVL-C	1,2,4,6,7,9,10,12,14,15,16,17
HOOD#3	804	0.09'	68 * 0.28'	CANOPY	9"x8"	90"	40"	48"	HALTON	KVM	1,3,4,5,6,8,11,13,15,16,18

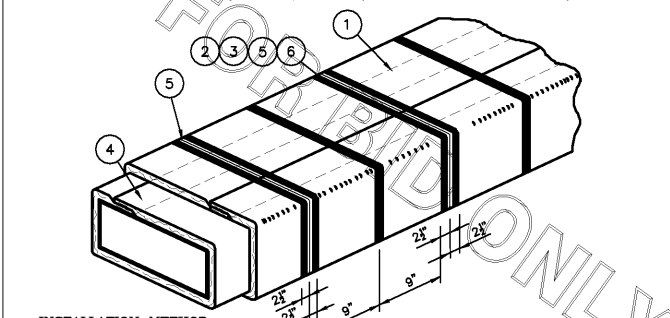
- NOTES
DIMENSIONS OF HOODS INCLUDE BACK AND SIDE SPACERS (HEIGHT DOES NOT INCLUDE CLOSURE PANELS).
- REMARKS
1. STAINLESS STEEL CONSTRUCTION.
 2. PROVIDE FULL HEIGHT SS CLOSURE PANEL WITH ACCESS PANEL IN FRONT LARGE ENOUGH TO REMOVE CAPTURE JET FAN.
 3. PROVIDE FULL HEIGHT SS CLOSURE PANEL WITH ACCESS PANEL IN FRONT LARGE ENOUGH TO SERVICE ANSUL COMPONENTS AND TO REMOVE THE CAPTURE JET FAN.
 4. PROVIDE PRE-PIPED ANSUL R-102 WET FIRE EXTINGUISHING SYSTEM.
 5. ANSUL CABINET AND COMPONENTS ABOVE HOOD ON RIGHT SIDE.
 6. PROVIDE 3" CUSTOM BACK SPACER TO ACCOMMODATE PIN AND SLEEVE ELECTRICAL BOX. ZERO CLEARANCE TO COMBUSTIBLE BACK SPACER.
 7. PROVIDE 3" LEFT SIDE SPACER WITH 1" THICK INSULATION.
 8. PROVIDE NOTCHED LEFT END SIDE PANEL.
 9. PROVIDE 3"x3" HORIZONTAL AND VERTICAL TRIM ANGLE FOR LEFT SIDE OF HOOD TO FINISH OFF GAP AT WALL.
 10. PROVIDE TOP PLENUM CAPTURE JET FAN, SPEED CONTROLLER AND COLLAR.
 11. PROVIDE FACTORY INSTALLED CAPTURE JET FAN IN PLENUM.
 12. PROVIDE CAPTURE JET AIR INLET AND COLLAR AT FRONT OF CLOSURE PANEL.
 13. PROVIDE PIN AND SLEEVE ELECTRICAL BOX (SINGLE CONNECTION). SEE ARCHITECTURAL AND ELECTRICAL DRAWINGS FOR ADDITIONAL INFORMATION.
 14. PROVIDE PIN AND SLEEVE ELECTRICAL BOX (DOUBLE CONNECTION). SEE ARCHITECTURAL AND ELECTRICAL DRAWINGS FOR ADDITIONAL INFORMATION.
 15. PROVIDE EQUIPMENT I.D. LABELS LOCATED ON FRONT LEADING EDGE OF HOOD.
 16. PROVIDE FACTORY WALL MOUNTING ANGLE AT TOP OF HOOD.
 17. PROVIDE NOTCHED RIGHT END SIDE PANEL.
 18. PROVIDE COUNTER MOUNTED SIDE CAPTURE JET PLENUM ASSEMBLY AND FAN ON LEFT SIDE OF HOOD.

KITCHEN HOOD SYSTEMS NOTES

1. CHICK-FIL-A MAINTAINS A NATIONAL ACCOUNT WITH HALTON CO. FOR THE HOODS. CHICK-FIL-A WILL PURCHASE AND PROVIDE THE HOODS FOR INSTALLATION BY THE MECHANICAL CONTRACTOR. THE MECHANICAL CONTRACTOR SHALL BE RESPONSIBLE FOR RECEIVING THE HOODS. CONTACT HALTON CO. AT 270-237-5600 FOR MORE INFO.
2. THE FIRE SUPPRESSION SYSTEM SHALL CONSIST OF A COMPLETE WET ANSUL SYSTEM FURNISHED BY HALTON. THE HOOD SHALL BE FURNISHED PRE-PIPED BY HALTON.
3. THE R-102 ANSUL FIRE SUPPRESSION SYSTEM EXTERNAL TO THE HOODS SHALL BE INSTALLED IN ACCORDANCE WITH HOOD MANUFACTURER'S SHOP DRAWINGS BY AN AUTHORIZED ANSUL SYSTEM INSTALLER SELECTED AND HIRED BY HALTON. COST FOR ANSUL INSTALLATION INCLUDED IN PRICE OF HOODS TO CFA.
4. HOOD EXHAUST DUCTWORK SHALL BE 16 GA. BLACK STEEL WITH CONTINUOUS LIQUID TIGHT WELD OF JOINTS & SEAMS.
5. TURNS IN GREASE EXHAUST DUCTWORK SHALL BE LONG RADIUS TYPE, WITH A CENTERLINE RADIUS R-3W/2 UNDO, NO EXCEPTIONS ALLOWED. NO MITERED FITTINGS ALLOWED.
6. ALL STAINLESS STEEL CLOSURE PANELS SHALL BE SUPPLIED BY HOOD MANUFACTURER AND INSTALLED BY THE MECHANICAL CONTRACTOR ACCORDING TO MANUFACTURER'S RECOMMENDATIONS.
7. SLOPE ALL GREASE EXHAUST DUCT BACK TO HOOD AT 1/4" PER FOOT OF RUN.
8. WRAP NEW GREASE DUCT WITH UNIFRAX FyreWRAP. INSULATION ON ACCESS DOORS SHALL BE INSTALLED ACCORDING TO MANUFACTURER'S INSTALLATION RECOMMENDATIONS. UNIFRAX FyreWRAP PRODUCT USED SHALL MEET LOCAL CODE REQUIREMENTS.
9. SUPPORT HOODS WITH THREADED ROD AT EACH FACTORY SUPPORT POINT. EACH SUPPORT POINT MUST SUPPORT THE HOOD WEIGHT EQUALLY. ATTACH TO STRUCTURE AS DETAILED ON STRUCTURAL DRAWING AND/OR ARCHITECTURAL DRAWINGS. ATTACH HOOD TO WALL AT 16" INTERVALS ALONG FULL LENGTH OF HOOD ON TOP AND BOTTOM. ATTACHMENT TO WALL REQUIRES FIELD DRILLING OF SUPPORT ANGLE AT BACK OF HOODS. EACH WALL ATTACHMENT POINT MUST OCCUR AT A WALL STUD. ATTACHMENT HARDWARE TO BE #12-24 HEX HEAD SHEET METAL SCREW EQUAL TO TEXTRON SDS EDT265; LENGTH AS REQUIRED TO FULLY PENETRATE THE STUD.
10. MECHANICAL CONTRACTOR TO PROVIDE AND INSTALL SUNCOAST H.E.S. SYSTEM FOR ALL HOODS. SEE HOOD FAN/EQUIPMENT INTERLOCK WIRING DIAGRAM ON SHEET M3.I FOR MORE INFORMATION.

HOOD ELEVATIONS NOTE
HOOD ELEVATIONS ON THIS SHEET ONLY SERVE ILLUSTRATIVE PURPOSES. SEE DETAILS ON ARCHITECTURAL SHEETS AND HALTON SHOP DRAWINGS ON SHEET M4.I FOR DETAILS ON STANDOFFS, CLEARANCES AND HOOD CONSTRUCTION.

FyreWrap® Elite 1.5 Duct Insulation
Commercial Kitchen Grease Duct System
ASTM E 2336/ICC-ES AC101 System
1 and 2 Hour Fire-Rated Enclosure, Shaft Alternative
Zero Clearance to Combustibles
Intertek Design No. UNI/BI 120-02
Butt Joint System (Both Layers, Max. 24"x24" Duct)



INSTALLATION METHOD:

Legend:

1. FyreWrap Elite 1.5 Duct Insulation, Two Layers (each 1 1/2", total thickness = 3")
2. Filament Tape (Temporary Hold)
3. 1/2" Carbon or SS Bundling Straps (Permanent Hold)
4. 3" Minimum Longitudinal Overlap
5. 1" Compressed Butt Joints
6. 3" Wide Aluminum Fil Tape at End Layer Transverse Butt Joints

Butt-Joint Adjacent Blanket Pieces

Revisions	Comments

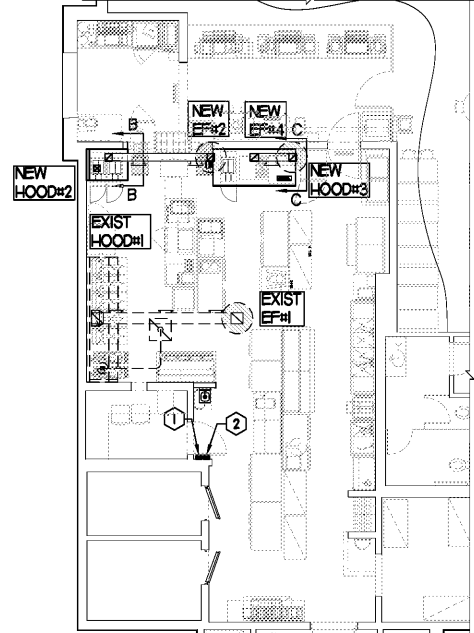
UNIFRAX

SUBJECT: _____
LOCATION: _____ DATE: 04-05-2011 DRAWING NO. _____
BLDG. NO.: _____ FP-693
DRAWN: SARustoy PROJECT NO. _____
SCALE: N.T.S.

CLEANOUT DOOR NOTE
DUCT WRAP SHALL BE APPLIED TO THE CLEANOUT DOOR PER THE WRAP MFR'S INSTALLATION INSTRUCTIONS. NO EXCEPTIONS. ALSO, THE CLEANOUT DOOR MUST BE REMOVABLE WITHOUT TOOLS AND MUST BE CLEARLY AND PERMANENTLY LABELED.

GREASE EXHAUST DUCT NOTE
CLEARANCES ABOVE CEILING ARE TIGHT. MECHANICAL CONTRACTOR TO FIELD VERIFY EXACT ROUTING AND CLEARANCES PRIOR TO FABRICATING GREASE EXHAUST DUCT.

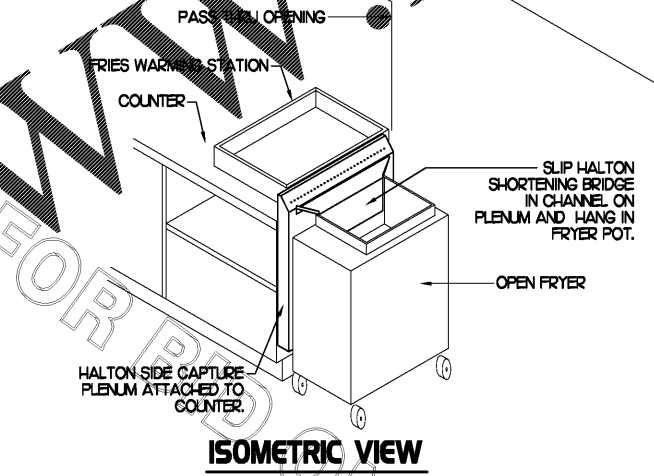
CAPTURE JET FAN NOTES
REFER TO 'CAPTURE-JET FAN INSTALLATION AND DIMENSIONAL DATA' SCHEDULE ON HALTON SHOP DRAWINGS (SHEET M4.I) FOR INFORMATION ON CAPTURE JET FANS C.J#1 THROUGH C.J#3.



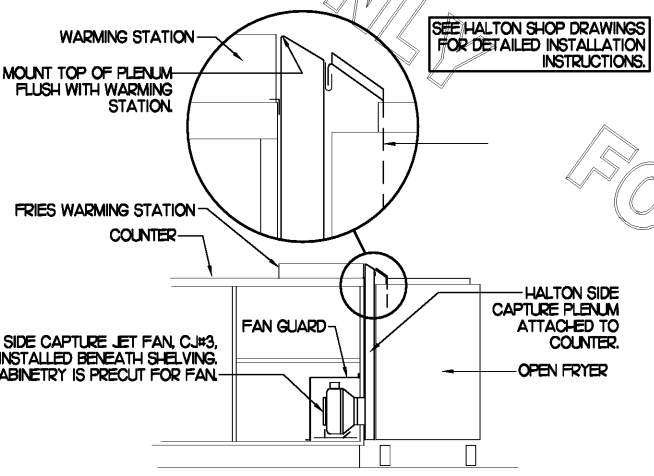
NOTE: SEE ARCHITECTURAL PLANS FOR EXACT HOOD LOCATIONS.

- KEY NOTES**
1. RELOCATE EXISTING ANSUL PULL STATION SERVING HOOD#1 TO WALL WHERE SHOWN. LOCATE ANSUL PULL STATION BETWEEN 42" AND 48" AFF. COORDINATE EXACT LOCATION WITH KITCHEN EQUIPMENT ELEVATIONS. J-BOX AND CONDUIT ARE BY ELECTRICAL. PROVIDE RED BAKELITE LABEL WITH 1/2" HIGH LETTERS INDICATING THE HOOD SERVED, I.E. 'MAIN COOKLINE HOOD'.
 2. ANSUL PULL STATION SERVING HOOD#2 AND HOOD#3 ON WALL ADJACENT TO OFFICE DOOR. LOCATE ANSUL PULL STATION BETWEEN 42" AND 48" AFF. COORDINATE EXACT LOCATION WITH KITCHEN EQUIPMENT ELEVATIONS. J-BOX AND CONDUIT ARE BY ELECTRICAL. PROVIDE RED BAKELITE LABEL WITH 1/2" HIGH LETTERS INDICATING THE HOODS SERVED, I.E. 'PASS THRU HOODS'.

1 HOOD LAYOUT
1/8"=1'-0"

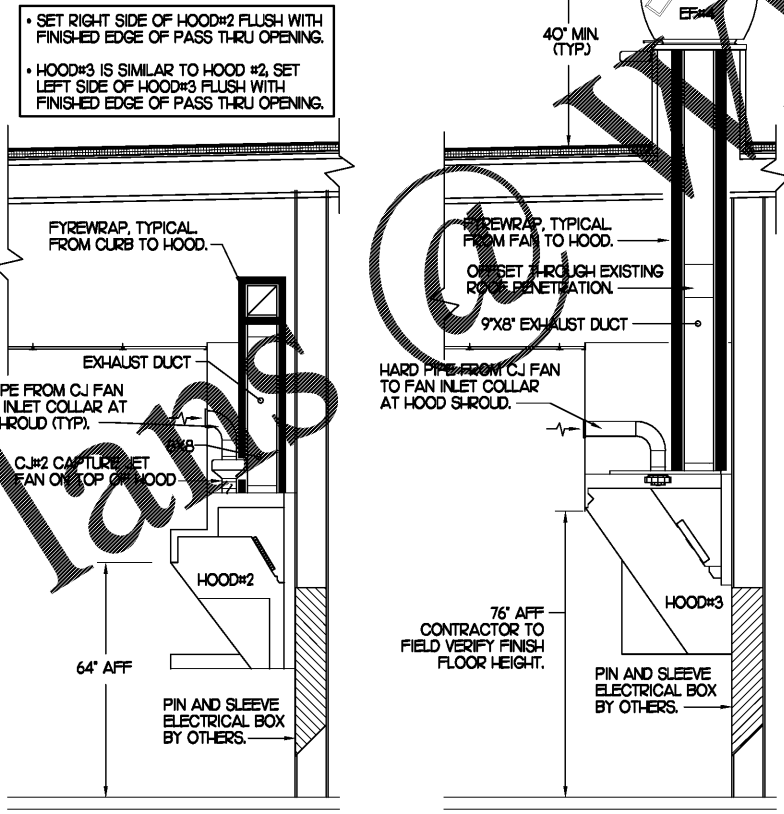


ISOMETRIC VIEW



FRONT VIEW

2 HALTON SIDE CAPTURE JET PLENUM
NOT TO SCALE



SECTION "A-A"

SECTION "B-B"

3 HOOD ELEVATIONS
NONE

Order Plans