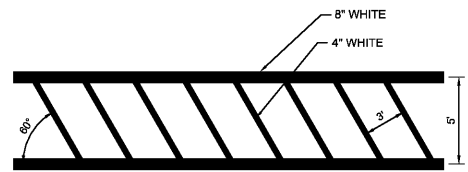


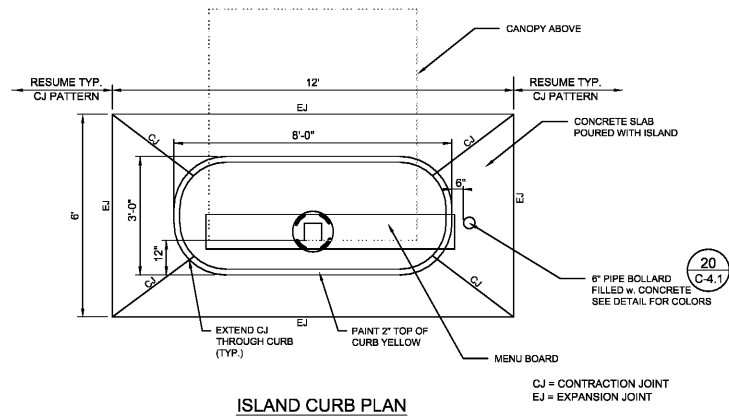
**32** MULTI-LANE DIRECTIONAL GRAPHICS  
C-4.3 NOT TO SCALE

- NOTES:
- GENERAL CONTRACTOR SHALL REFER TO CHICK-FIL-A PARKING LOT STRIPING SPECIFICATIONS. SEE DETAIL SPECIFICATIONS. SEE DETAIL.
  - CONTRACTOR SHALL USE WHITE REFLECTIVE PAINT ON ASPHALT & YELLOW REFLECTIVE PAINT ON CONCRETE.

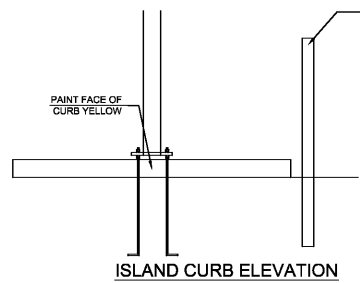


**33** CROSSWALK DETAIL  
C-4.3 NOT TO SCALE

- NOTES:
- REFER TO PARKING LOT STRIPING SPECIFICATION
  - CROSSWALK ALONG AN ACCESSIBLE ROUTE SHALL MAINTAIN A CROSS SLOPE OF 2% MAX AND A RUNNING SLOPE OF 5% MAX.

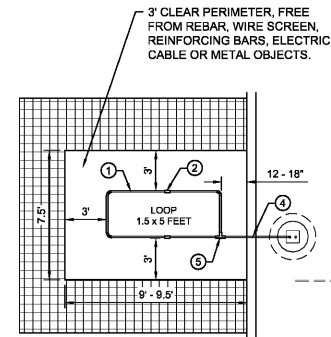


ISLAND CURB PLAN

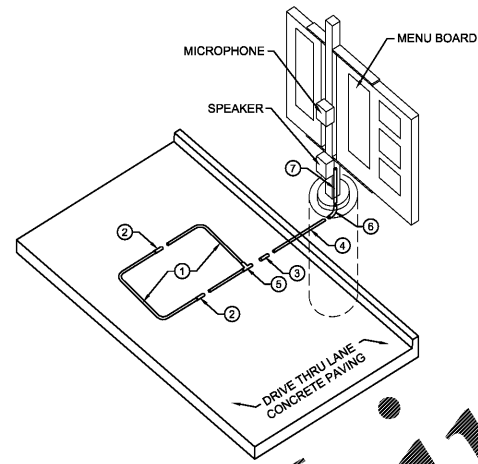


ISLAND CURB ELEVATION

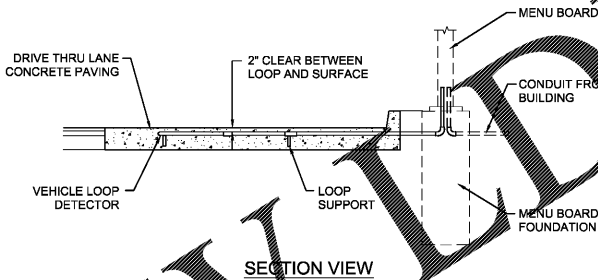
**34** DRIVE THRU ORDER POINT ISLAND CURB  
C-4.3 NOT TO SCALE



PLAN VIEW



ISOMETRIC VIEW



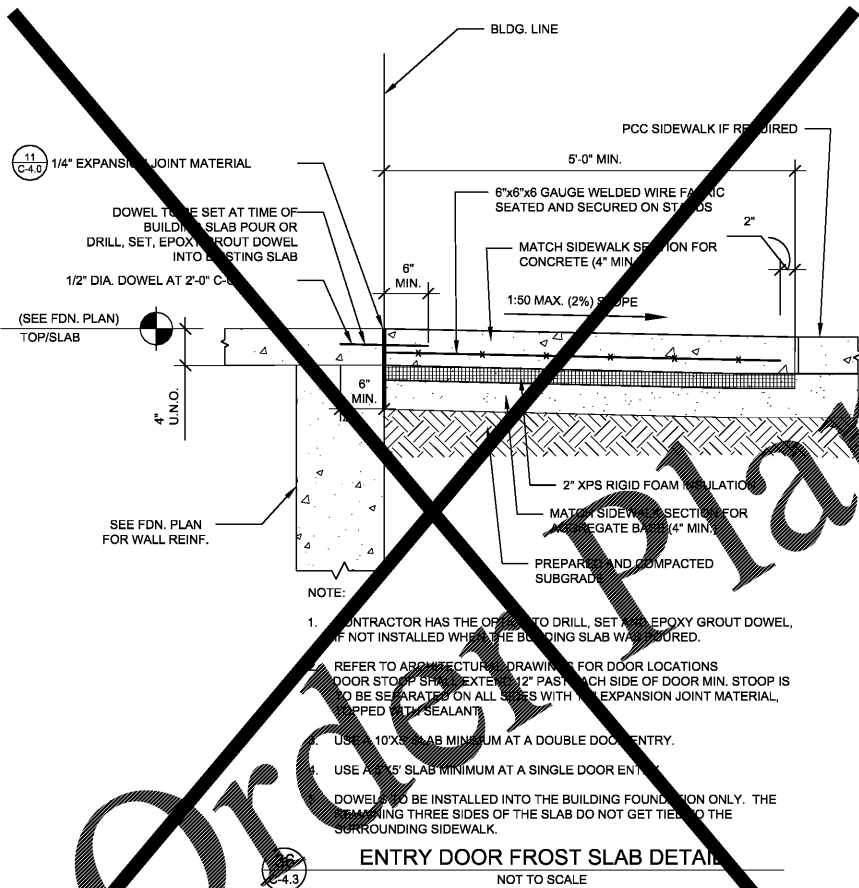
SECTION VIEW

**35** MENU BOARD LOOP DETECTION SYSTEM  
C-4.3 NOT TO SCALE

- NOTES:
- LOOP DETECTOR IS MODEL NO. VDL100 VEHICLE DETECTION LOOP MANUFACTURED BY MH ELECTRONICS, INC.
  - FOLLOW MANUFACTURER'S RECOMMENDATIONS FOR INSTALLATION.

PARTS LIST

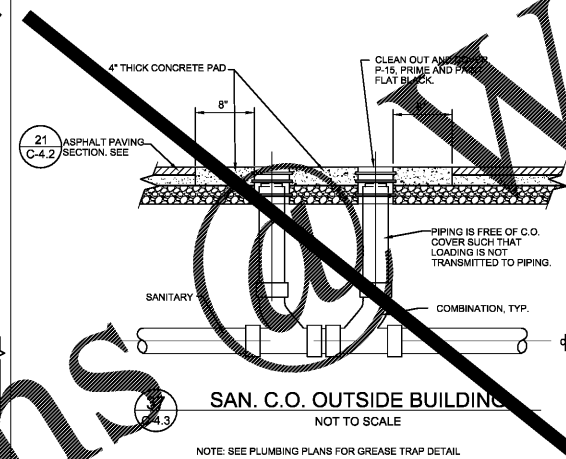
- PREPARED (FOLDED) LOOP (1.5 x 5')
- 1/2" PVC COUPLING
- 1/2" PVC SLEEVE COUPLING
- 1/2" PVC TUBING (3' LENGTH)
- 1/2" PVC CORNER FITTING
- 1/2" PVC 90° ELBOW
- 1/2" PVC TUBING (2' LENGTH)



ENTRY DOOR FROST SLAB DETAIL

**36** ENTRY DOOR FROST SLAB DETAIL  
C-4.3 NOT TO SCALE

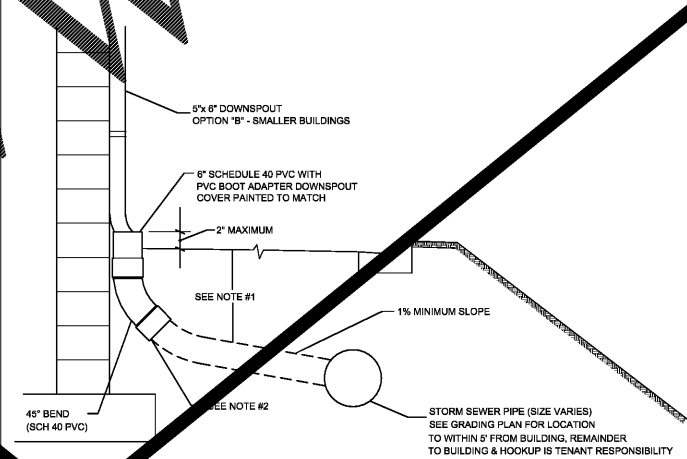
- NOTE:
- CONTRACTOR HAS THE OPTION TO DRILL, SET AND EPOXY GROUT DOWEL, IF NOT INSTALLED WHEN THE BUILDING SLAB WAS Poured.
  - REFER TO ARCHITECTURE DRAWINGS FOR DOOR LOCATIONS. DOOR STOOP SHALL EXTEND 12" PAST EACH SIDE OF DOOR MIN. STOOP IS TO BE SEPARATED ON ALL SIDES WITH AN EXPANSION JOINT MATERIAL, APPLIED WITH SEALANT.
  - USE 10% SLAB MINIMUM AT A DOUBLE DOOR ENTRY.
  - USE 4% SLAB MINIMUM AT A SINGLE DOOR ENTRY.
  - DOWELS TO BE INSTALLED INTO THE BUILDING FOUNDATION ONLY. THE REMAINING THREE SIDES OF THE SLAB DO NOT GET TIED TO THE SURROUNDING SIDEWALK.



SAN. C.O. OUTSIDE BUILDING

**37** SAN. C.O. OUTSIDE BUILDING  
C-4.3 NOT TO SCALE

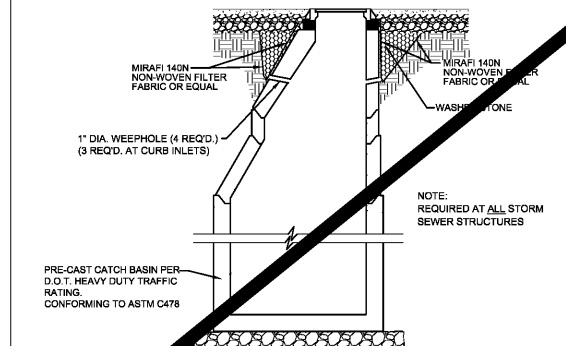
NOTE: SEE PLUMBING PLANS FOR GREASE TRAP DETAIL



BUILDING DOWNSPOUT CONNECTION DETAIL

**38** BUILDING DOWNSPOUT CONNECTION DETAIL  
C-4.3 NOT TO SCALE

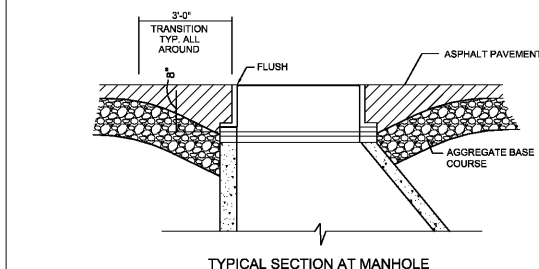
- NOTES:
- FOR ALL DEPTHS OF COVER LESS THAN TWO (2) FEET, PIPE MUST BE SCHEDULE 40 PVC. FOR DEPTHS OF COVER GREATER THAN TWO (2) FEET, FLEXIBLE PIPE MAY BE USED. REFER TO SPECIFICATIONS FOR ALLOWABLE PIPE TYPES.
  - A WATER TIGHT CONNECTION SHALL BE MAINTAINED WITH ANY TRANSITION FROM SCHEDULE 40 PVC PIPE TO ANY OTHER PIPE TYPE.
  - THE DOWNSPOUT COLLECTOR DRAIN SHALL BE INSTALLED BEFORE THE DOWNSPOUTS ARE INSTALLED ON THE BUILDING. SITEWORK. CONTRACTOR SHALL BE RESPONSIBLE FOR ALL WORK INCLUDING DOWNSPOUT BOOT ADAPTER. BUILDING CONTRACTOR SHALL BE RESPONSIBLE FOR THE CONNECTION AT THE POINT OF THE ADAPTER.



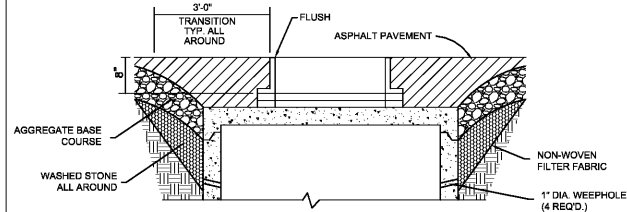
STORM WEEP HOLE DETAIL

**40** STORM WEEP HOLE DETAIL  
C-4.3 NOT TO SCALE

NOTE: REQUIRED AT ALL STORM SEWER STRUCTURES

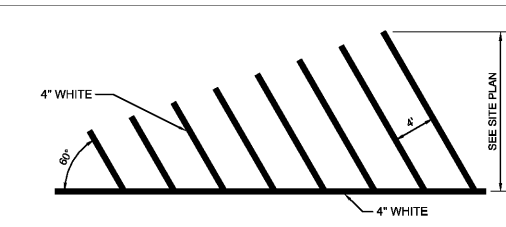


TYPICAL SECTION AT MANHOLE



TYPICAL SECTION AT INLET/CATCH BASIN

**39** TYPICAL SECTION AT INLET/CATCH BASIN DETAIL  
C-4.3 NOT TO SCALE



PAVEMENT STRIPING DETAIL

**41** PAVEMENT STRIPING DETAIL  
C-4.3 NOT TO SCALE

- NOTES:
- REFER TO PARKING LOT STRIPING SPECIFICATION
  - SEE SITE PLAN FOR LOCATION, SHAPE AND SIZE

**5** C-4.0



Chick-fil-A  
5200 Buffington Road  
Atlanta, Georgia 30349-2998

GBC DESIGN, INC.  
565 White Pond Dr.  
Akron, OH 44320-1123  
Phone 330-896-0228  
Fax 330-896-5792



**CHICK-FIL-A**  
HOUSTON ROAD FSU  
4980 HOUSTON ROAD  
FLORENCE, KY 41042

FSU# 02593

REVISION SCHEDULE  
NO. DATE DESCRIPTION  
1 7/1/2017 ISSUED FOR BID

GBC PROJECT # 41141A  
PRINTED FOR Bid  
DATE 7/5/17  
DRAWN BY B.A.W.

Information contained on this drawing and in all digital files produced for above named project may not be reproduced in any manner without express written or verbal consent from authorized project representatives.

SHEET  
**CHICK-FIL-A SITE DETAILS**

Bid SHEET NUMBER

C-4.3