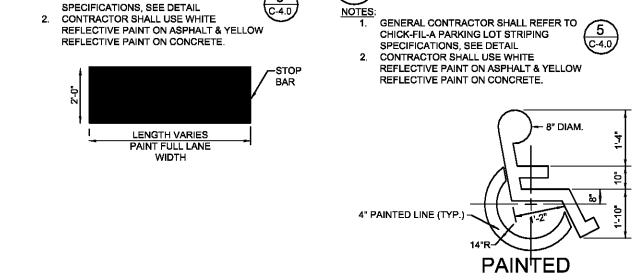


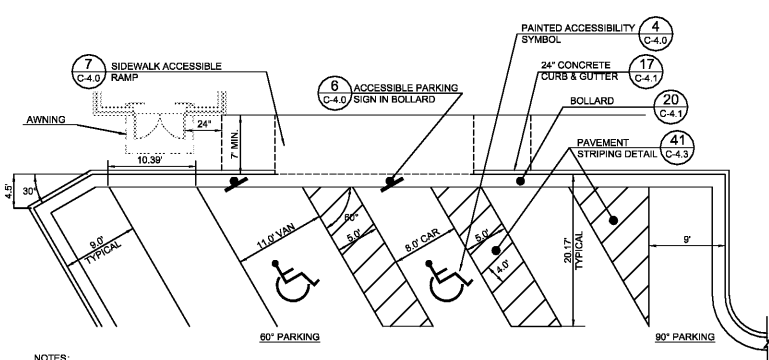
**1 DIRECTIONAL ARROW**  
C-4.0 NOT TO SCALE



**3 STOP LINE GRAPHIC**  
C-4.0 NOT TO SCALE

**2 DRIVE-THRU GRAPHICS**  
C-4.0 NOT TO SCALE

**4 ACCESSIBILITY SYMBOL**  
C-4.0 NOT TO SCALE



**NOTES:**

- ACCESSIBLE PARKING AND ACCESSIBLE AISLES SHALL NOT EXCEED 1.50 IN SLOPE IN ANY DIRECTION. IF ONLY ONE ACCESSIBLE ISLE IS INSTALLED, IT IS TO BE A VAN SIZE.
- PARKING STALL DIMENSIONING SHALL BE IN ACCORDANCE WITH APPLICABLE GOVERNING AUTHORITY'S AND ADA STANDARDS AND IF DIFFERENT THAN THIS DETAIL SHALL BE THE DIMENSIONING SHOWN ON THE SITE LAYOUT PLAN.
- GENERAL CONTRACTOR SHALL REFER TO CHICK-FIL-A PARKING LOT STRIPING SPECIFICATIONS.
- CONTRACTOR SHALL USE 4" WIDE WHITE REFLECTIVE PAINT FOR STRIPING ON ASPHALT PARKING LOTS.
- CONTRACTOR SHALL USE 4" WIDE YELLOW REFLECTIVE PAINT FOR STRIPING ON CONCRETE PARKING LOTS.
- NO WHEEL STOPS TO BE INSTALLED WHEN PARKING IS ADJACENT TO SIDEWALK.
- ADA SIGNS IN BOLLARDS AND BOLLARDS SHALL BE INSTALLED WHEN PARKING IS ADJACENT TO FLUSH CURB OR A RAMP.

**PARKING LOT STRIPING SPECIFICATIONS:**

**STANDARDS:**

- ALWAYS FOLLOW ALL APPLICABLE GOVERNING AUTHORITY'S STANDARDS.
- SURFACES SHOULD BE CLEAN, DRY, AND FREE FROM LOOSE OR PEELING PAINT, REMOVE ALL OIL, DUST, GREASE, DIRT, AND OTHER FOREIGN MATERIAL TO ENSURE ADEQUATE ADHESION. DO NOT APPLY WHEN AIR OR SURFACE TEMPERATURES ARE BELOW 40°F.
- APPLY SHERWIN-WILLIAMS SETFAST PREMIUM ALKYLID ZONE MARKING PAINT A320 WHITE OR A303 YELLOW USING EITHER AIRLESS OR CONVENTIONAL LINE STRIPING EQUIPMENT. USE THE FOLLOWING SETTINGS AS A GUIDE-ACTUAL SETTINGS DEPEND ON ATMOSPHERIC CONDITIONS AT THE TIME OF APPLICATION:

AIRLESS	1800-2700 PSI
PRESSURE	1/2" ID
HOSE	0.015" O.D. 1/2"
TIP	80 MESH
FILTER	ONLY IF NECESSARY, UP TO 1PT/GAL
REDUCTION	V.M.P. NAPTHA R1K3

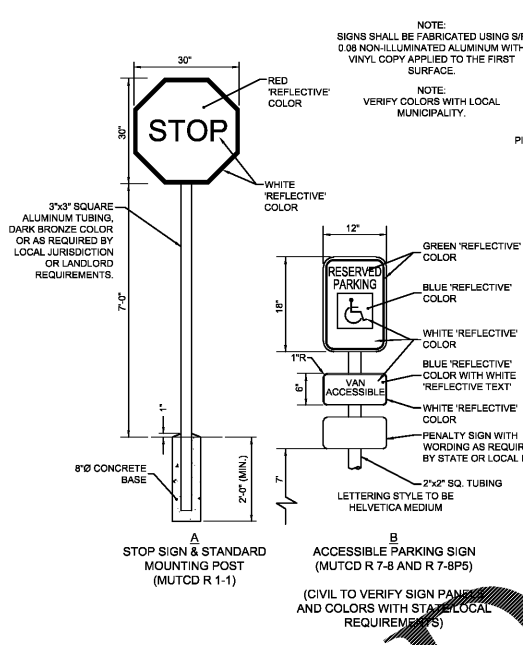
**CONVENTIONAL:**

- GUN
- FLUID NOZZLE
- AIR NOZZLE
- ATOMIZATION PRESSURE
- FLUID PRESSURE
- REDUCTION

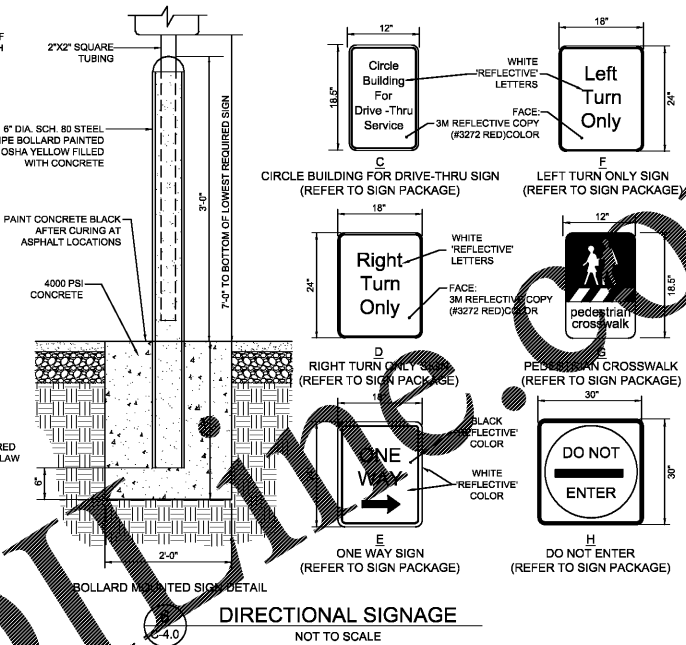
• Blinks 21 (BLEEDER) OR EQUIVALENT #68  
• INTERNAL MIX, #709  
• 45-80 PSI  
• 40-70 PSI  
• ONLY IF NECESSARY, UP TO 1PT/GAL V.M.P. NAPTHA R1K3

• MIX PANT THOROUGHLY BY BOXING, STIRRING, OR POWER AGITATION BEFORE USE. APPLY AT 15 MILS WET TO ACHIEVE A SPREAD RATE OF 400-500 LINEAL FEET OF STANDARD 4" STRIPE PER GALLON. APPLIED AT THIS RATE AT 70 DEGREES F AND 60% RELATIVE HUMIDITY, PAINT WILL DRY WITH NO TRAFFIC PICKUP AFTER 20 MINUTES.

• GENERAL CONTRACTOR TO RE-STRIP THE LOT 45 DAYS AFTER OPENING.



**STOP SIGN & STANDARD MOUNTING POST**  
(MUTCD R 1-1)



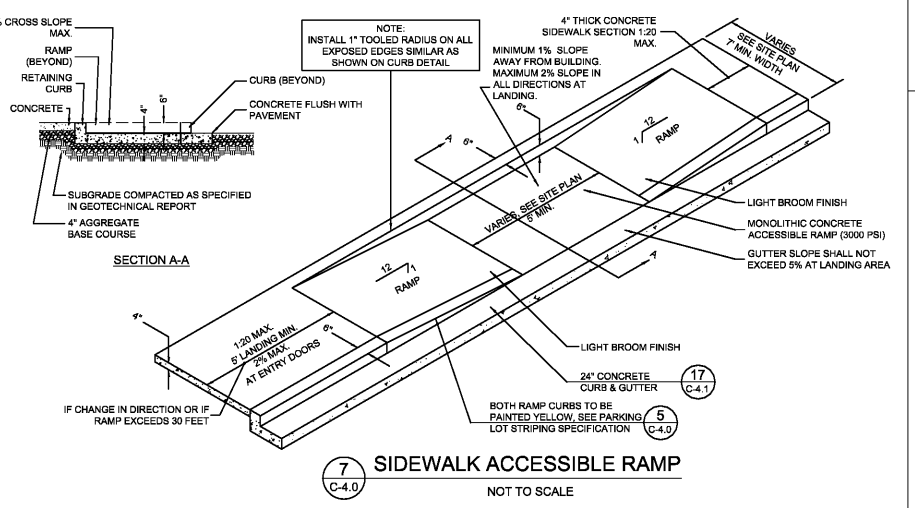
**DIRECTIONAL SIGNAGE**  
NOT TO SCALE

**NOTES:**

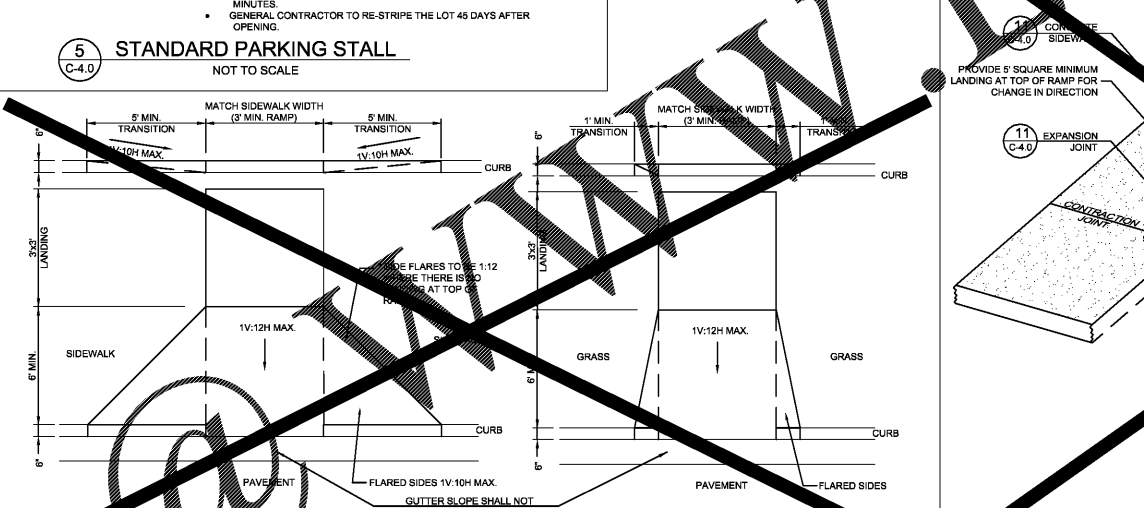
- GENERAL CONTRACTOR SHALL REFER TO CHICK-FIL-A PARKING LOT STRIPING SPECIFICATIONS. SEE DETAIL SPECIFICATIONS. SEE DETAIL SPECIFICATIONS. SEE DETAIL SPECIFICATIONS.
- CONTRACTOR SHALL USE WHITE REFLECTIVE PAINT ON ASPHALT & YELLOW REFLECTIVE PAINT ON CONCRETE.
- IF STOP SIGN IS PROPOSED, STOP LINE GRAPHIC IS NOT REQUIRED.

**NOTES:**

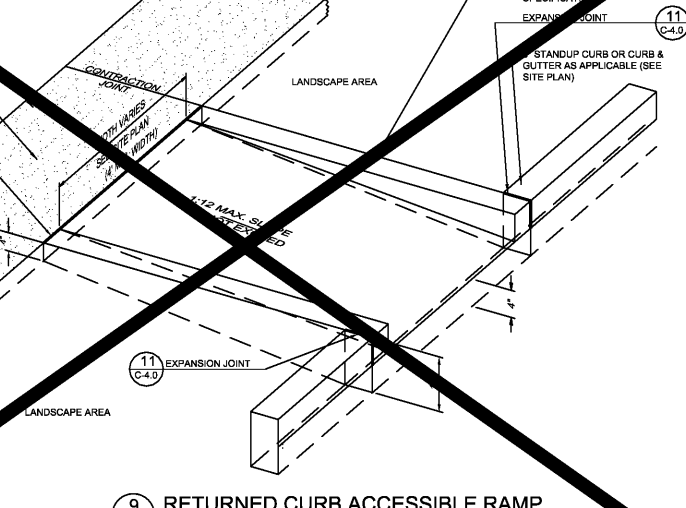
- GENERAL CONTRACTOR SHALL REFER TO CHICK-FIL-A PARKING LOT STRIPING SPECIFICATIONS. SEE DETAIL SPECIFICATIONS. SEE DETAIL SPECIFICATIONS.
- CONTRACTOR SHALL USE WHITE REFLECTIVE PAINT ON ASPHALT & YELLOW REFLECTIVE PAINT ON CONCRETE. UNLESS UPON VERIFICATION BY THE GENERAL CONTRACTOR IT IS DETERMINED THAT LOCAL, STATE, OR ADA CODES DIFFER, IN WHICH CASE THESE CODES SHALL GOVERN.



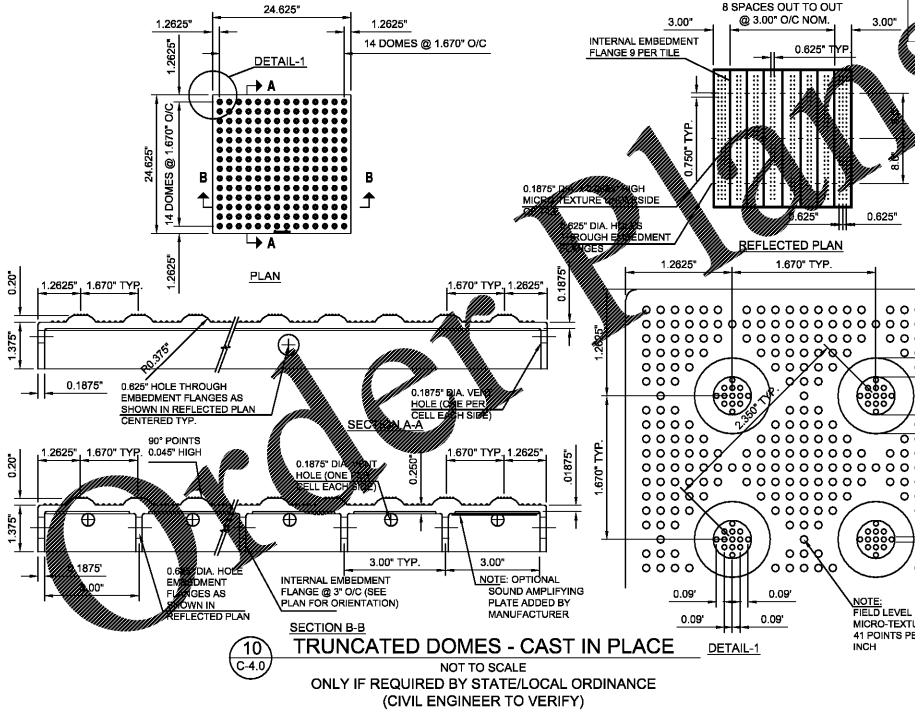
**7 SIDEWALK ACCESSIBLE RAMP**  
C-4.0 NOT TO SCALE



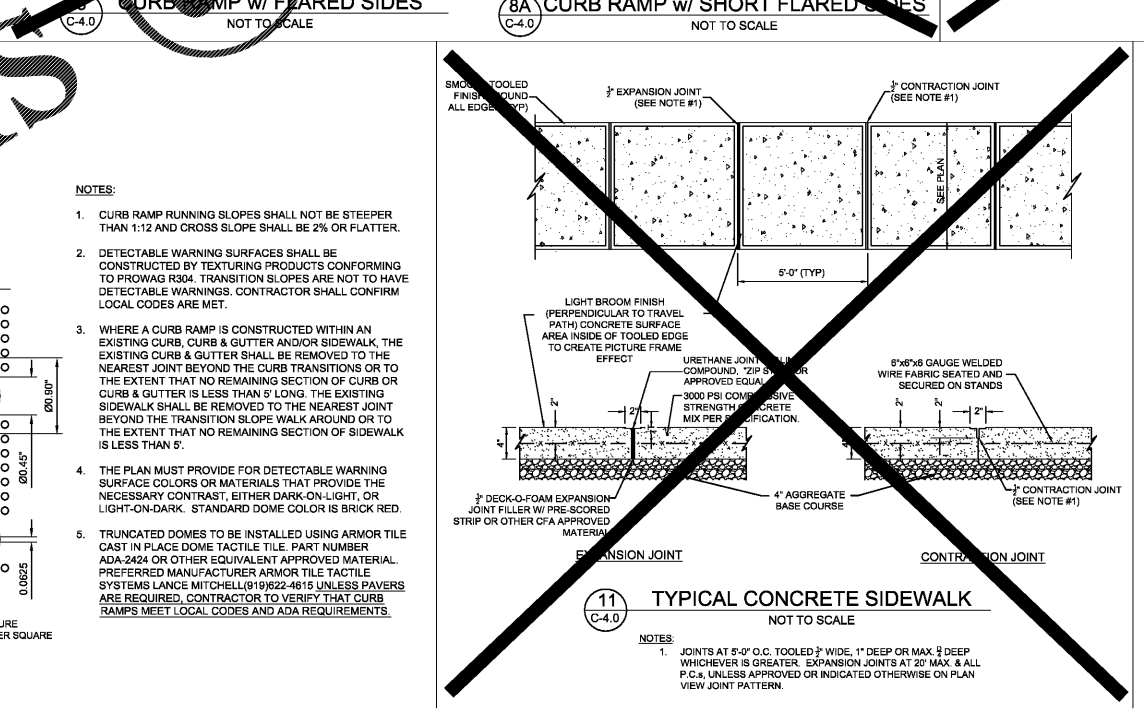
**5 STANDARD PARKING STALL**  
C-4.0 NOT TO SCALE



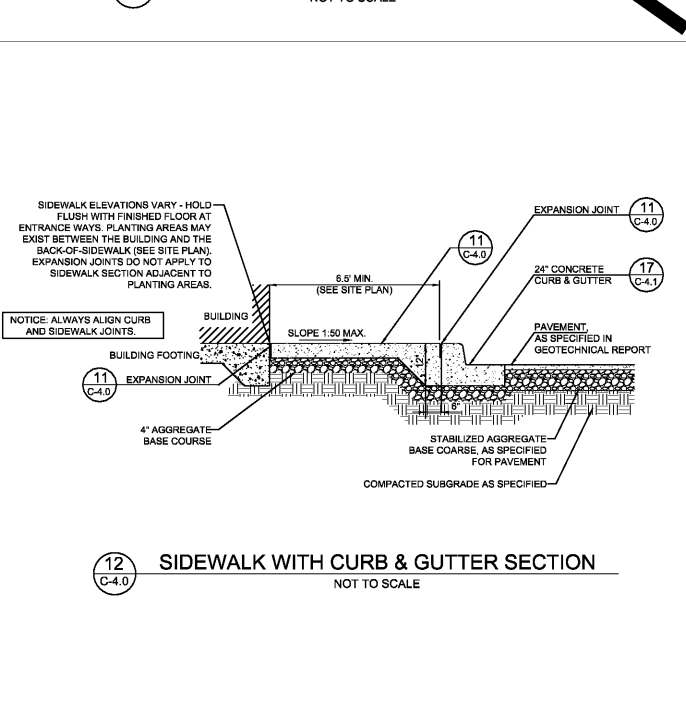
**9 RETURNED CURB ACCESSIBLE RAMP**  
C-4.0 NOT TO SCALE



**10 TRUNCATED DOMES - CAST IN PLACE**  
C-4.0 NOT TO SCALE  
ONLY IF REQUIRED BY STATE/LOCAL ORDINANCE (CIVIL ENGINEER TO VERIFY)



**11 TYPICAL CONCRETE SIDEWALK**  
C-4.0 NOT TO SCALE



**12 SIDEWALK WITH CURB & GUTTER SECTION**  
C-4.0 NOT TO SCALE



Chick-fil-A  
5200 Buffington Road  
Atlanta, Georgia 30349-2998

GBC DESIGN, INC.  
565 White Pond Dr.  
Akron, OH 44320-1123  
Phone 330-896-0928  
Fax 330-896-5792



**CHICK-FIL-A**  
HOUSTON ROAD FSU  
4980 HOUSTON ROAD  
FLORENCE, KY 41042

FSU# 02593

REVISION SCHEDULE  
NO. DATE DESCRIPTION  
1 7/11/2017 ISSUED FOR BID

GBC PROJECT # 41141A  
PRINTED FOR Bid  
DATE 7/5/17  
DRAWN BY B.A.W.

Information contained on this drawing and in all digital files produced for above named project shall not be reproduced in any manner without express written or verbal consent from authorized project representatives.

CHICK-FIL-A SITE DETAILS

SHEET NUMBER  
C-4.0