

**PROJECT DESCRIPTION:**  
THE LAND IS BEING DISTURBED (0.17 ACRES) TO MODIFY PARKING, DRIVEWAY, SIDEWALK, AND DRIVE-THRU AREAS.

**SCHEDULE OF CONSTRUCTION ACTIVITY:**  
THE CONTRACTOR SHALL IMPLEMENT ALL EROSION CONTROL MEASURES PRIOR TO OTHER CONSTRUCTION ACTIVITY. ALL EROSION CONTROL MEASURES MUST REMAIN FUNCTIONAL UNTIL THE SITE HAS BEEN STABILIZED UNLESS OTHERWISE STATED ON THE PLAN. SEE SEQUENCE OF CONSTRUCTION ACTIVITIES, SHT. C-3.1 AND SWPPP REPORT.

**EROSION CONTROL NOTES:**  
DIVERSION CHANNELS AND PERIMETER CONTROLS SHALL BE IMPLEMENTED AS A FIRST STEP OF GRADING AND WITHIN 7 DAYS FROM THE START OF GRUBBING AND SHALL CONTINUE TO FUNCTION UNTIL UPLAND AREAS ARE STABILIZED. BMP'S SHOULD BE CLEANED OUT ONCE CAPACITY HAS BEEN REDUCED BY 40%.

EROSION CONTROL BLANKETS WITH MATTING WILL BE USED ON DITCHES GREATER THAN 1.5% AND ALL OTHER SLOPES GREATER THAN 6% GRADE.

**CONTRACTOR IS RESPONSIBLE FOR EROSION CONTROL.**

NO SOLID OR LIQUID WASTE SHALL BE DISCHARGED INTO STORM WATER RUNOFF.

ALL EROSION AND SEDIMENT CONTROL PRACTICES MUST MEET THE STANDARDS AND SPECIFICATIONS OF THE CITY OF FLORENCE, KY AND THE KYTC STORM WATER MANAGEMENT GUIDELINES FOR CONSTRUCTION ACTIVITY.

OTHER EROSION AND SEDIMENT CONTROL ITEMS MAY BE NECESSARY DUE TO ENVIRONMENTAL CONDITIONS.

CONTRACTOR IS RESPONSIBLE TO PICK UP/CLEAN UP ANY LITTER, CONSTRUCTION DEBRIS AND/OR CONSTRUCTION CHEMICALS EXPOSED TO STORM WATER PRIOR TO ANTICIPATED STORM EVENTS OR WIND EVENTS AS FORECASTED BY LOCAL WEATHER.

OFF-SITE VEHICLE TRACKING SEDIMENT SHALL BE MINIMIZED. CONSTRUCTION VEHICLES ARE LIMITED TO THE CONSTRUCTION ACCESS ROAD NOTED ON THE PLAN.

REGULAR INSPECTION AND MAINTENANCE WILL BE PROVIDED FOR ALL EROSION AND SEDIMENT CONTROL PRACTICES. PERMANENT RECORDS OF MAINTENANCE AND INSPECTIONS MUST BE KEPT THROUGHOUT THE CONSTRUCTION PERIOD. PROVIDED WILL BE NAME OF INSPECTOR, MAJOR OBSERVATIONS, DATED OF INSPECTION AND CORRECTIVE MEASURES TAKEN.

SILT FENCES ARE TO BE INSTALLED IN FRONT OF STORM INLETS AND FILL AREAS BEFORE STARTING CONSTRUCTION PER MANUFACTURERS RECOMMENDATIONS.

SILT FENCES ARE TO BE CONSTRUCTED ON THE OUTSIDE OF ALL STOCK PILES.

ALL EROSION CONTROL MEASURES TO BE MAINTAINED BY CONTRACTOR UNTIL PROJECT COMPLETION AND THEN REMOVED.

SEDIMENT TO BE REMOVED FROM SILT FENCE AS NECESSARY AND MUST BE REMOVED WHEN DESIGN CAPACITY HAS BEEN REDUCED BY 50%.

ANY DE-WATERING ACTIVITY SHALL INCLUDE A DIRT BAG OR DANDY BAG AT THE END OF PUMPING DISCHARGE LINE PRIOR TO ENTERING INTO THE STORM SEWER.

EXISTING MAX. SLOPE TO OUTFALL = 25.0%

EXISTING MIN. SLOPE TO OUTFALL = 1.0%

POST-CONSTRUCTION MAX. SLOPE TO OUTFALL = 33.3%

POST-CONSTRUCTION MIN. SLOPE TO OUTFALL = 1.0%

POST CONSTRUCTION RUNOFF COEFFICIENT = 0.95

RECEIVING WATER: CITY OF FLORENCE MS4

EXISTING TOPOGRAPHY: CURRENTLY THE SITE IS A DRIVE-THRU RESTAURANT WITH ASSOCIATED PAVING.

INSPECT OUTFALLS AND FIX SITE BASED ON THE INSPECTIONS. REVISE SWPPP IF APPROPRIATE.

SITE INSPECTIONS TWICE PER WEEK AT LEAST 72 HOURS APART.

THERE IS NO INDUSTRIAL/NON-CONSTRUCTION DISCHARGE ASSOCIATED WITH THIS PROJECT.

TEMPORARY SEEDING IS REQUIRED WHEN GRADING OPERATIONS ARE TEMPORARILY HALTED FOR OVER 14 DAYS, AND STOCKPILING. PERMANENT SEEDING IS REQUIRED WHEN GRADING OPERATIONS ARE COMPLETED AND/OR CONSTRUCTION OPERATIONS WILL NOT IMPACT THE DISTURBED AREA. SEED AREAS THAT SHOW SIGNS OF EROSION.

OFFSITE ACCUMULATION OF SEDIMENT WILL BE REMOVED, YET IF A STREAM IS REACHED, CONTACT WATER POLLUTION CONTROL FIRST.

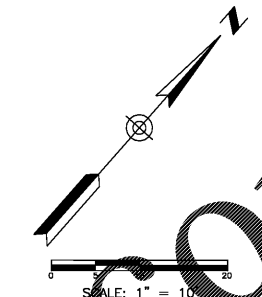
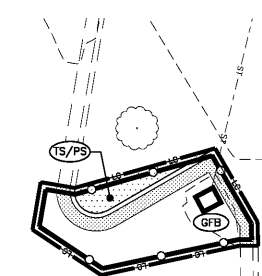
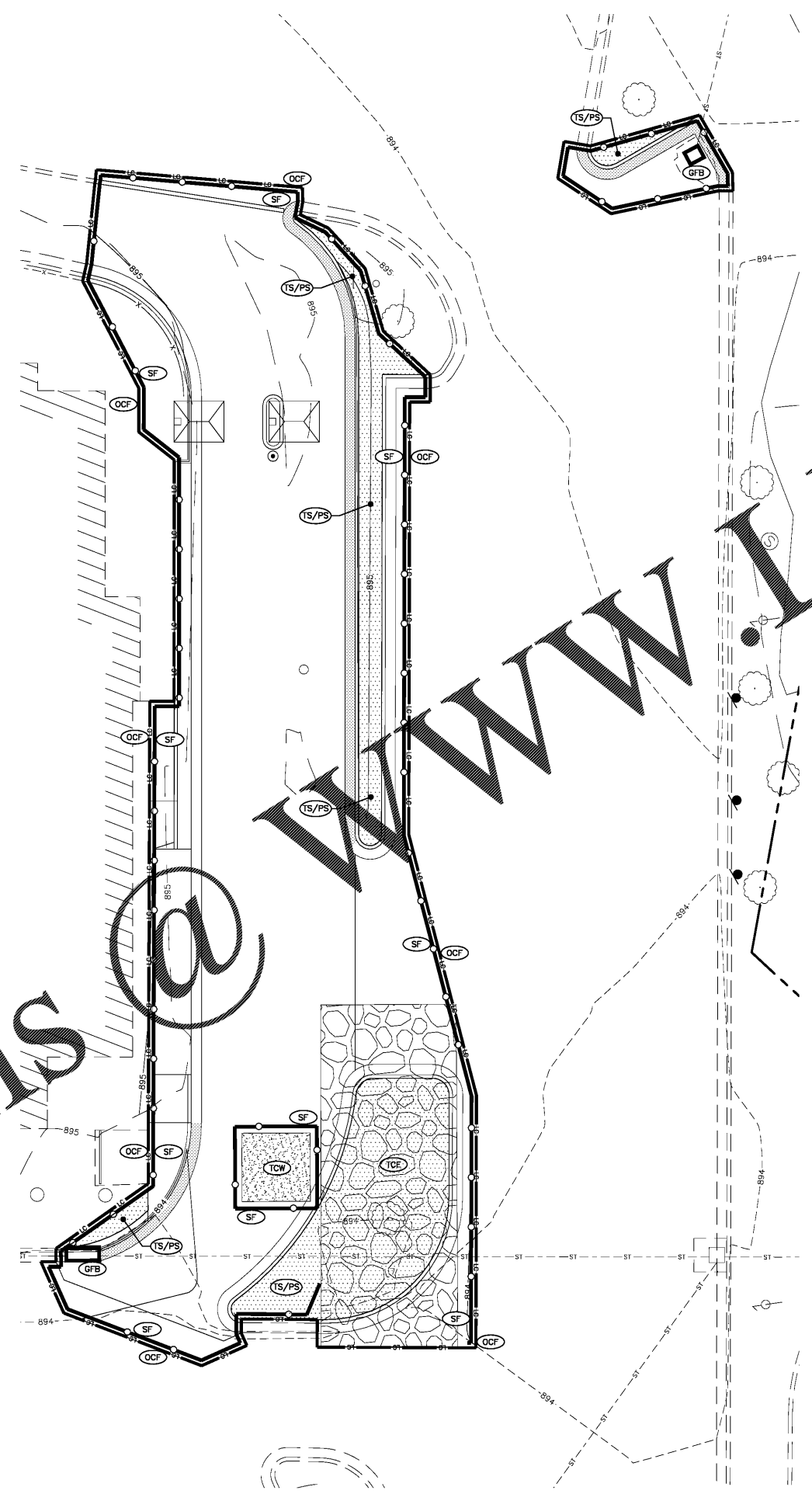
CONTRACTOR TO MAINTAIN A RAIN GAUGE ON SITE OR NEARBY REFERENCE FOR RECORDS. INSPECTORS OF THE SITE MUST HAVE COMPLETED THE WFC FUNDAMENTALS OF EROSION PREVENTION AND SEDIMENT CONTROL (EPSC) COURSE.

REMOVAL OF ALL TEMPORARY EROSION CONTROL DEVICES UPON FINAL STABILIZATION & REMOVAL OF SEDIMENT IN THE DRAIN INLET FILTRATION DEVICES ACCORDING TO STATE AND LOCAL REGULATIONS.

**SEQUENCE OF CONSTRUCTION ACTIVITY**

THE CONTRACTOR SHALL IMPLEMENT ALL OF THE FOLLOWING EROSION CONTROL MEASURES, IN THE ORDER STATED, PRIOR TO OTHER CONSTRUCTION ACTIVITY. THE CONTRACTOR IS RESPONSIBLE FOR THE INSTALLATION AND MAINTENANCE OF ALL EROSION CONTROL AND STORM WATER POLLUTION PREVENTION ITEMS. ALL EROSION CONTROL MEASURES MUST REMAIN FUNCTIONAL UNTIL THE SITE HAS BEEN STABILIZED.

- BEFORE CONSTRUCTION, EVALUATE, MARK, AND PROTECT IMPORTANT TREES.
- CLEAR AREAS FOR CONSTRUCTION ENTRANCE AND SILT FENCE.
- INSTALL CONSTRUCTION ENTRANCE.
- POST THE NOI AND SWPPP PLANS ON-SITE.
- INSTALL EROSION CONTROL FENCES AND OTHER PERIMETER CONTROLS AROUND CONSTRUCTION AREA BEFORE CONSTRUCTION ACTIVITIES BEGIN.
- INSTALL PROTECTION MEASURES AROUND EXISTING INLETS.
- BEGIN DEMOLITION AND EARTHWORK.
- COMPLETE THE CUT AND FILLS ON THE SITE. INSTALL CHECK DAMS OR STABILIZE THE SLOPES WITH EROSION CONTROL BLANKETS AS NEEDED.
- INSTALL STAGING AREAS, MATERIAL STORAGE AREAS, FUEL STATIONS, AND CONCRETE WASHOUT.
- INSTALL STORM SEWERS, INLETS, AND UNDERGROUND DETENTION CHAMBERS.
- INSTALL INLET FILTER PROTECTION AS INLETS ARE INSTALLED.
- CONTINUE SITE EXCAVATING, BACKFILLING, AND GRADING ACTIVITIES. ANY AREA LEFT DORMANT FOR MORE THAN 15 DAYS MUST BE TEMPORARILY SEEDED.
- ESTABLISH BUILDING PAD.
- FINISH MASS EARTHWORK.
- CONSTRUCT BUILDING.
- COMPLETE ASPHALT PAVING.
- FINAL GRADE AND FINISH.
- COMPLETE FINAL SEEDING AND LANDSCAPING AND STABILIZE ALL DISTURBED AREAS.
- MAINTAIN ALL EROSION AND SEDIMENT CONTROL PRACTICES UNTIL ALL DISTURBED AREAS ARE PERMANENTLY STABILIZED.
- REMOVE SEDIMENT FROM STORMWATER MANAGEMENT SYSTEM, SEED AND MULCH SITE AS NEEDED.



**LEGEND**

- PROP. MANHOLE
- PROP. INLET
- EX. INLET
- SPILLING SECTION
- CATCHING SECTION
- POSITIVE DRAINAGE
- EX. STORM SEWER
- PROP. STORM SEWER
- EX. CURB
- PROP. CURB & GUTTER
- PROP. CONTOURS
- EX. CONTOURS
- SILT FENCE
- LIMITS OF CONSTRUCTION TO BE DESIGNATED BY ORANGE CONSTRUCTION FENCE WHEN NOT ADJACENT TO SILT FENCE
- INLET PROTECTION
- DANDY BAG
- STABILIZED CONSTRUCTION ENTRANCE
- TEMPORARY SEEDING & MULCHING/ PERMANENT SEEDING & MULCHING SEE LANDSCAPE PLAN L-1.0
- TEMPORARY CONCRETE WASH-OUT AREA

LIMITS OF DISTURBANCE = 0.17 AC.  
CONTRACTOR SHALL ALSO UTILIZE SWPPP DOCUMENT



Chick-fil-A  
5200 Buffington Road  
Atlanta, Georgia 30349-2998

GBC DESIGN, INC.  
565 White Pond Dr.  
Akron, OH 44320-1123  
Phone 330-836-0228  
Fax 330-836-5782



**CHICK-FIL-A**  
**HOUSTON ROAD FSU**  
**4980 HOUSTON ROAD**  
**FLORENCE, KY 41042**

**FSU# 02593**

NO.	DATE	DESCRIPTION
1	7/11/2017	ISSUED FOR BID

GBC PROJECT #	41141A
PRINTED FOR	Bid
DATE	7/5/17
DRAWN BY	B.A.W.

Information contained on this drawing and in all digital files produced for above named project may not be reproduced in any manner without express written or verbal consent from authorized project representatives.

SHEET:  
**STORMWATER POLLUTION PREVENTION PLAN (SWPPP)**  
SHEET NUMBER

CONTRACTOR RESPONSIBLE TO FIELD VERIFY LOCATIONS AND ELEVATIONS OF EXISTING UTILITY TIE-INS AS SHOWN ON SITE PLANS (SANITARY, STORM, WATER, GAS, ELECTRIC, PHONE, ETC.) PRIOR TO THE START OF CONSTRUCTION. CONTACT ALLAN WILEY AT GBC DESIGN, INC., 330-836-0228, WITH ANY CONCERNS PRIOR TO THE START OF CONSTRUCTION.

**C-3.1**

Order Plans