

Chick-fil-A
5200 Buffington Road
Atlanta, Georgia 30349-2998

GBC DESIGN, INC.
565 White Pond Dr.
Akron, OH 44320-1123
Phone 330-836-0228
Fax 330-836-5792



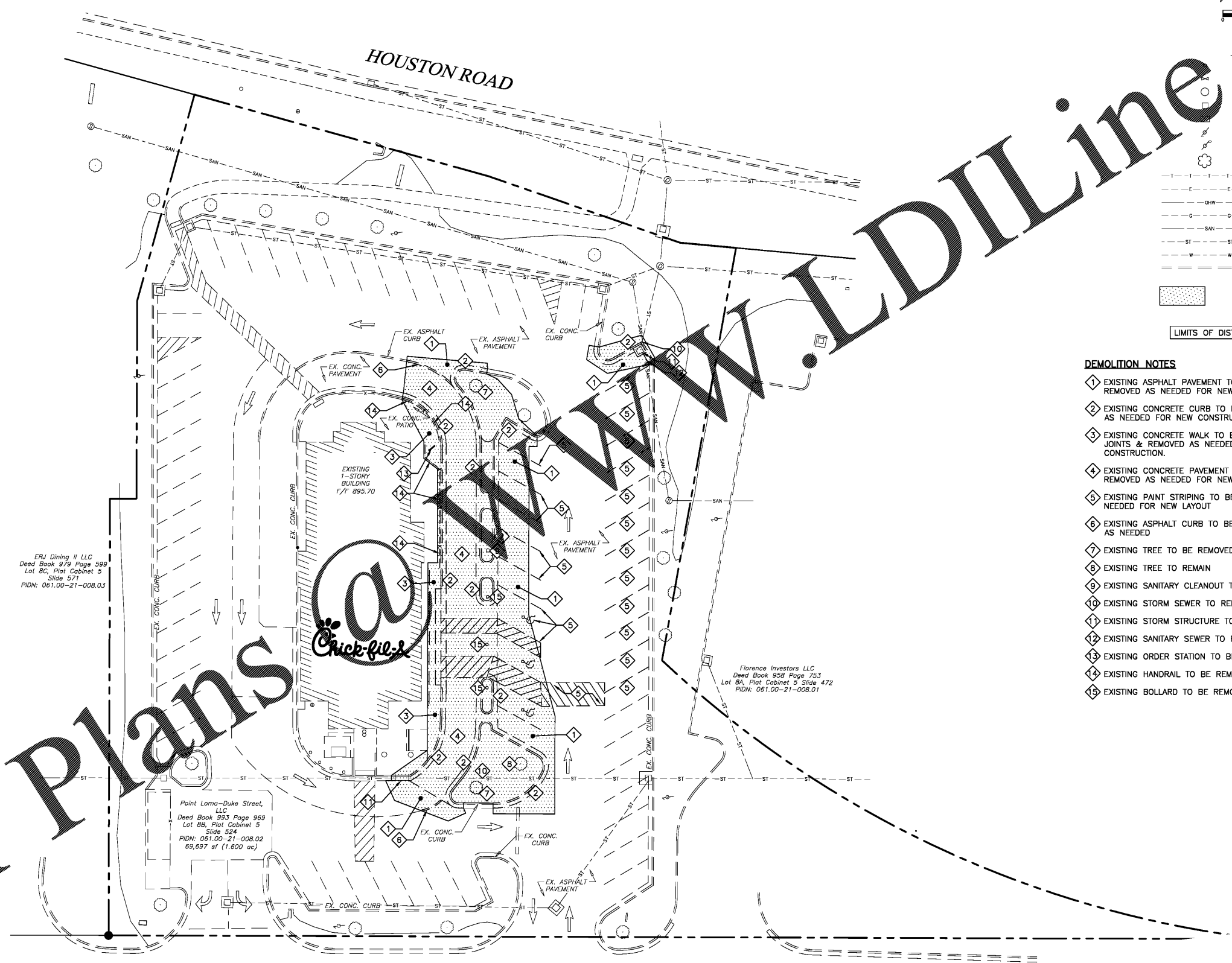
- LEGEND
- EX. HYDRANT
 - EX. VALVE
 - EX. MANHOLE
 - EX. CATCH BASIN
 - EX. BOX INLET
 - EX. LIGHT POLE
 - EX. POWER POLE
 - EX. TREE
 - EX. TELEPHONE LINE
 - EX. ELECTRIC LINE
 - EX. OVERHEAD WIRE
 - EX. GAS LINE
 - EX. SANITARY SEWER
 - EX. STORM SEWER
 - EX. WATER LINE
 - EX. CURB

AREA OF DEMOLITION INCLUDING PAVEMENT REMOVAL, BUILDINGS, CONCRETE, SIGNS, LIGHT POLES, UTILITY SERVICES, FENCES, TREES, ETC.

LIMITS OF DISTURBANCE = 0.17 AC.

DEMOLITION NOTES

- 1 EXISTING ASPHALT PAVEMENT TO BE SAWCUT AND REMOVED AS NEEDED FOR NEW CONSTRUCTION
- 2 EXISTING CONCRETE CURB TO BE SAWCUT & REMOVED AS NEEDED FOR NEW CONSTRUCTION
- 3 EXISTING CONCRETE WALK TO BE SAWCUT AT EXISTING JOINTS & REMOVED AS NEEDED FOR NEW CONSTRUCTION.
- 4 EXISTING CONCRETE PAVEMENT TO BE SAWCUT AND REMOVED AS NEEDED FOR NEW CONSTRUCTION
- 5 EXISTING PAINT STRIPING TO BE BLACKED OUT AS NEEDED FOR NEW LAYOUT
- 6 EXISTING ASPHALT CURB TO BE SAWCUT AND REMOVED AS NEEDED
- 7 EXISTING TREE TO BE REMOVED
- 8 EXISTING TREE TO REMAIN
- 9 EXISTING SANITARY CLEANOUT TO REMAIN
- 10 EXISTING STORM SEWER TO REMAIN
- 11 EXISTING STORM STRUCTURE TO REMAIN
- 12 EXISTING SANITARY SEWER TO REMAIN
- 13 EXISTING ORDER STATION TO BE REMOVED
- 14 EXISTING HANDRAIL TO BE REMOVED
- 15 EXISTING BOLLARD TO BE REMOVED



ERJ Dining II LLC
Deed Book 979 Page 599
Lot 8C, Plat Cabinet 5
Slide 571
PIDN: 061.00-21-008.03

Point Lama-Duke Street,
LLC
Deed Book 923 Page 969
Lot 8B, Plat Cabinet 5
Slide 524
PIDN: 061.00-21-008.02
69,697 sq ft (1.600 ac)

Florence Investors LLC
Deed Book 358 Page 753
Lot 8A, Plat Cabinet 5 Slide 472
PIDN: 061.00-21-008.01

Meijer Stores Limited Partnership
Deed Book 793 Page 603
Lot 8 (part), Plat Cabinet 5 Slide 319
PIDN: 061.00-21-008.00

Order Plans

CONTRACTOR RESPONSIBLE TO FIELD VERIFY LOCATIONS AND ELEVATIONS OF EXISTING UTILITY TIE-INS AS SHOWN ON SITE PLANS (SANITARY, STORM, WATER, GAS, ELECTRIC, PHONE, ETC.) PRIOR TO THE START OF CONSTRUCTION. CONTACT ALLAN WILEY AT GBC DESIGN, INC., 330-836-0228, WITH ANY CONCERNS PRIOR TO THE START OF CONSTRUCTION.

CHICK-FIL-A
HOUSTON ROAD FSU
4980 HOUSTON ROAD
FLORENCE, KY 41042

FSU# 02593

NO.	DATE	DESCRIPTION
1	7/11/2017	ISSUED FOR BID

GBC PROJECT #	41141A
PRINTED FOR	Bid
DATE	7/5/17
DRAWN BY	B.A.W.

Information contained on this drawing and in all digital files produced for above named project may not be reproduced in any manner without express written or verbal consent from authorized project representatives.

SHEET:
DEMOLITION PLAN

SHEET NUMBER
C-1.1