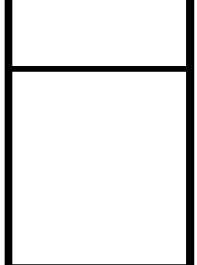


5200 Buffington Rd.
Atlanta Georgia,
30349-2998

NO.	DATE	BY	REVISION
1			
2			



BTM ENGINEERING, INC.
Consulting Engineers, Landscape Architects, Planners
3001 Taylor Springs Drive
Louisville, Kentucky 40220
(502)-459-8402 Phone
(502)-459-8427 Fax

STORE #3816
Tax Parcel Number
061.00-21-008.02

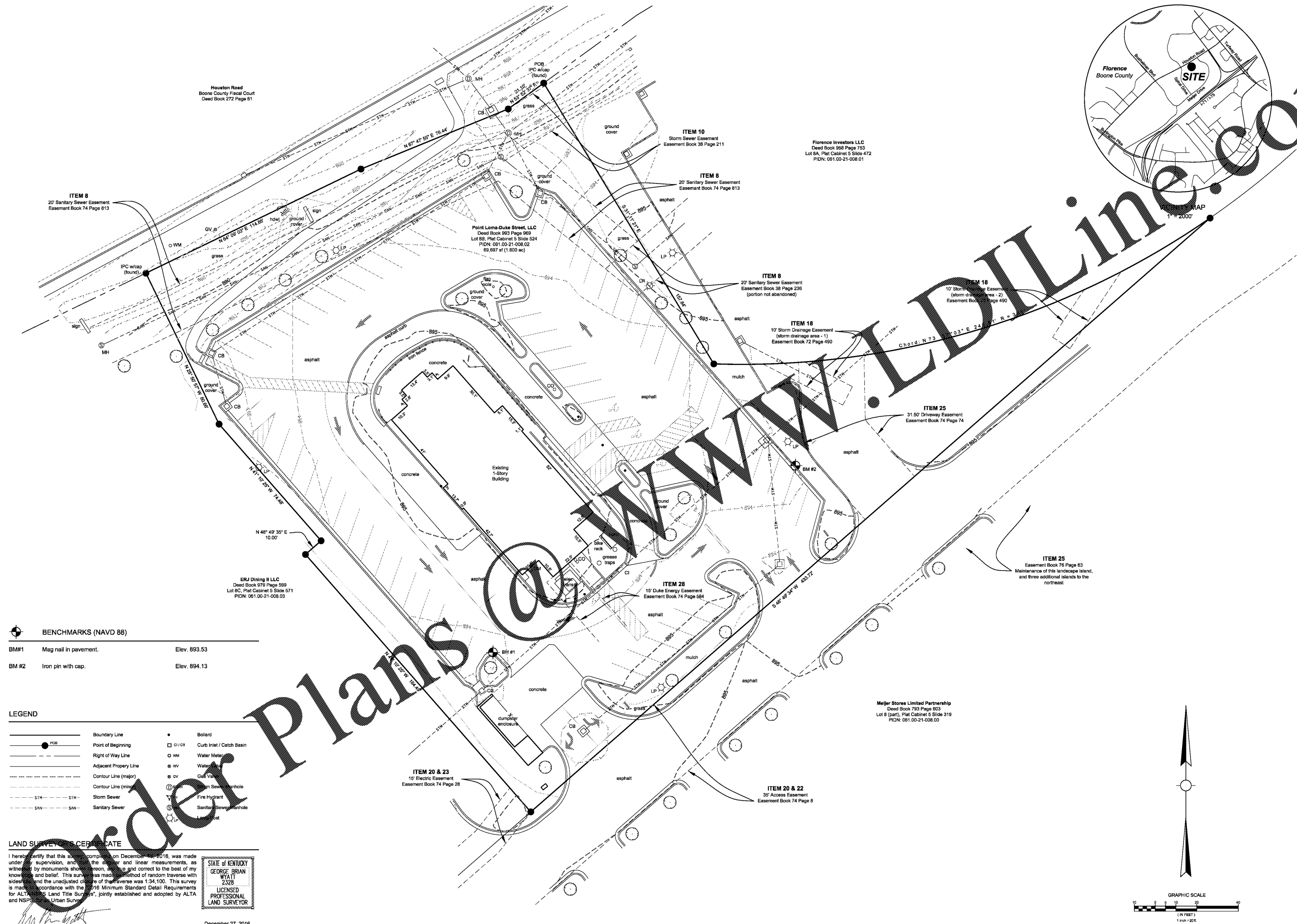
Lot 8B
Houston Lakes Subd.
4980 Houston Road
Florence, KY 41042

SHEET TITLE
ALTA/ACSM
LAND TITLE
SURVEY

DWG EDITION V8.5
REVISION 1-2014

Job No. : 160289
Store : 2593
Date : 12/27/16
Drawn By : abw
Checked By: jcm

Sheet
C-0.1



Houston Road
Boone County Fiscal Court
Deed Book 272 Page 81

Florence Investors LLC
Deed Book 988 Page 753
Lot 8A, Plat Cabinet 5 Slide 472
PIDN: 061.00-21-008.01

Point Loma-Duke Street, LLC
Deed Book 993 Page 969
Lot 8B, Plat Cabinet 5 Slide 524
PIDN: 061.00-21-008.02
69,697 sf (1.600 ac)

ERJ Dining II LLC
Deed Book 979 Page 599
Lot 8C, Plat Cabinet 5 Slide 571
PIDN: 061.00-21-008.03

Meijer Stores Limited Partnership
Deed Book 783 Page 603
Lot 8 (part), Plat Cabinet 5 Slide 319
PIDN: 061.00-21-008.00

BENCHMARKS (NAVD 88)

BM#1	Mag nail in pavement.	Elev. 893.53
BM #2	Iron pin with cap.	Elev. 894.13

LEGEND

—	Boundary Line	•	Bollard
●	Point of Beginning	□ CB	Curb Inlet / Catch Basin
—	Right of Way Line	○ WM	Water Meter
—	Adjacent Property Line	○ WV	Water
---	Contour Line (major)	○ GV	Gas Valve
---	Contour Line (minor)	⊕	Manhole
---	Storm Sewer	⊕	Fire Hydrant
---	Sanitary Sewer	⊕	Sanitary Sewer Manhole
---		⊕	Landscaping

LAND SURVEYORS CERTIFICATE

I hereby certify that this survey, completed on December 27, 2016, was made under my supervision, and that the angles and linear measurements, as witnessed by monuments shown hereon, are true and correct to the best of my knowledge and belief. This survey was made by the method of random traverse with sidesight and the unadjusted closure of the traverse was 1:34,100. This survey is made in accordance with the 2016 Minimum Standard Detail Requirements for ALTA/ACSM Land Title Surveys, jointly established and adopted by ALTA and NSPS for Urban Surveys.



December 27, 2016
Date

George Brian Wyatt, PLS #2328
bwyatt@btmeng.com

