

AGENCY & UTILITY INFO:

OWNER/DEVELOPER
LOVE'S TRAVEL STOPS & COUNTRY STORES, INC.
10601 N. PENNSYLVANIA AVE.
OKLAHOMA CITY, OK 73120

CONTACT: CHAD BRUNER
PH: 405-463-8801
EMAIL: CHAD.BRUNER@LOVES.COM

ZONING
COUNTY PLANNING COMMISSION
101 E. JEFFERSON ST., 3RD FLOOR
TIPTON, IN 46072
PH: 765-675-6063
CONTACT: STEVE NIBLUCK

STORM SEWER
TIPTON COUNTY SURVEYOR
101 E. JEFFERSON ST., ROOM 102
TIPTON, IN 46072
PH: 765-675-2793
CONTACT: JASON HENDERSON

SANITARY SEWER
TIPTON MUNICIPAL UTILITIES
SANITARY
891 BERRYMAN PIKE
TIPTON, IN 46072
PH: 765-675-7629
CONTACT:

WATER
TIPTON MUNICIPAL UTILITIES WATER
891 BERRYMAN PIKE
TIPTON, IN 46072
PH: 765-675-7629
CONTACT:

GAS
VECTREN ENERGY
PH: 800-777-2060

ENGINEER
CRIPE
3939 PRIORITY WAY SOUTH DRIVE,
SUITE 200
INDIANAPOLIS, IN 46240

CONTACT: DAVE KUEHNEN
PH: 317-706-6382
EMAIL: DKUEHNEN@CRIPE.BIZ

ROADWAY
CITY OF TIPTON BOARD OF PUBLIC WORKS
500 GREEN ST
TIPTON, IN 46072
PH: 765-675-3331
CONTACT: MICHAEL TERRY

EROSION CONTROL
TIPTON COUNTY SURVEYOR
101 E. JEFFERSON ST., ROOM 102
TIPTON, IN 46072
PH: 765-675-2793
CONTACT: JASON HENDERSON

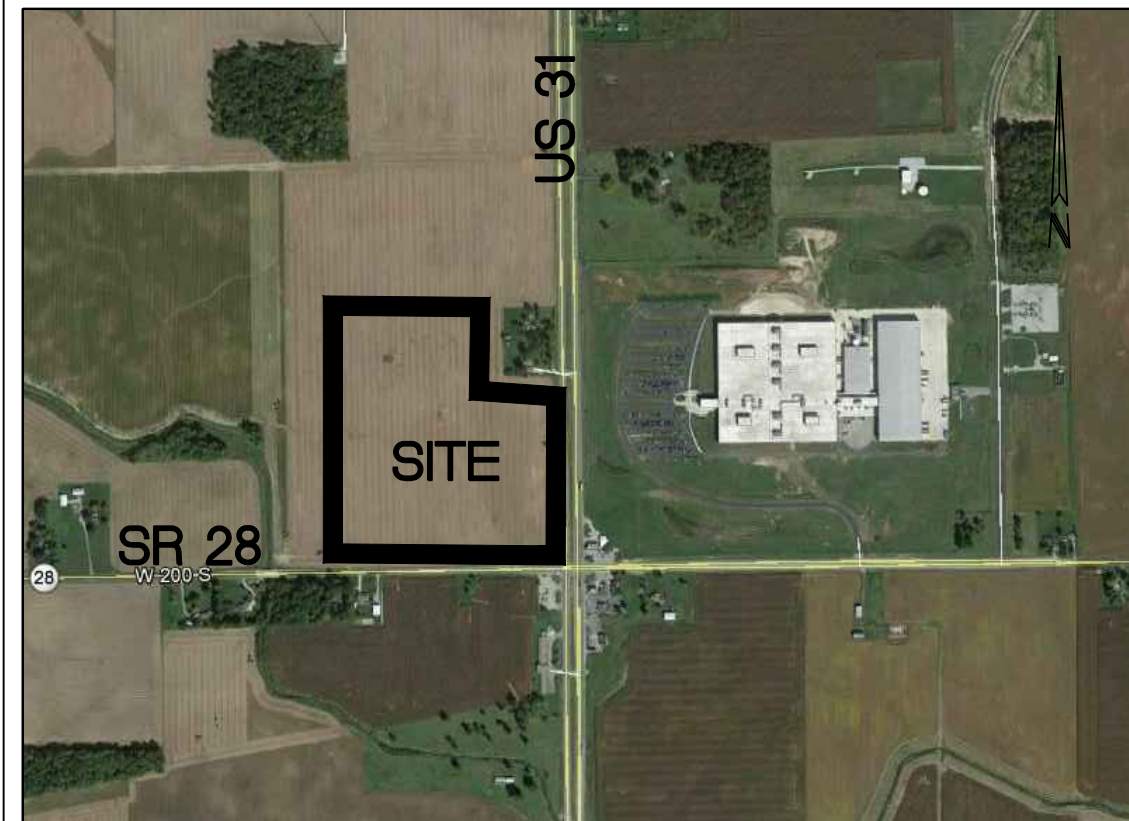
FIRE
CITY OF TIPTON FIRE DEPARTMENT
227 E. JEFFERSON ST
TIPTON, IN 46072
PH: 765-675-4633
CONTACT: JON ADAMS

ELECTRIC
DUKE ENERGY
PH: 800-521-2232

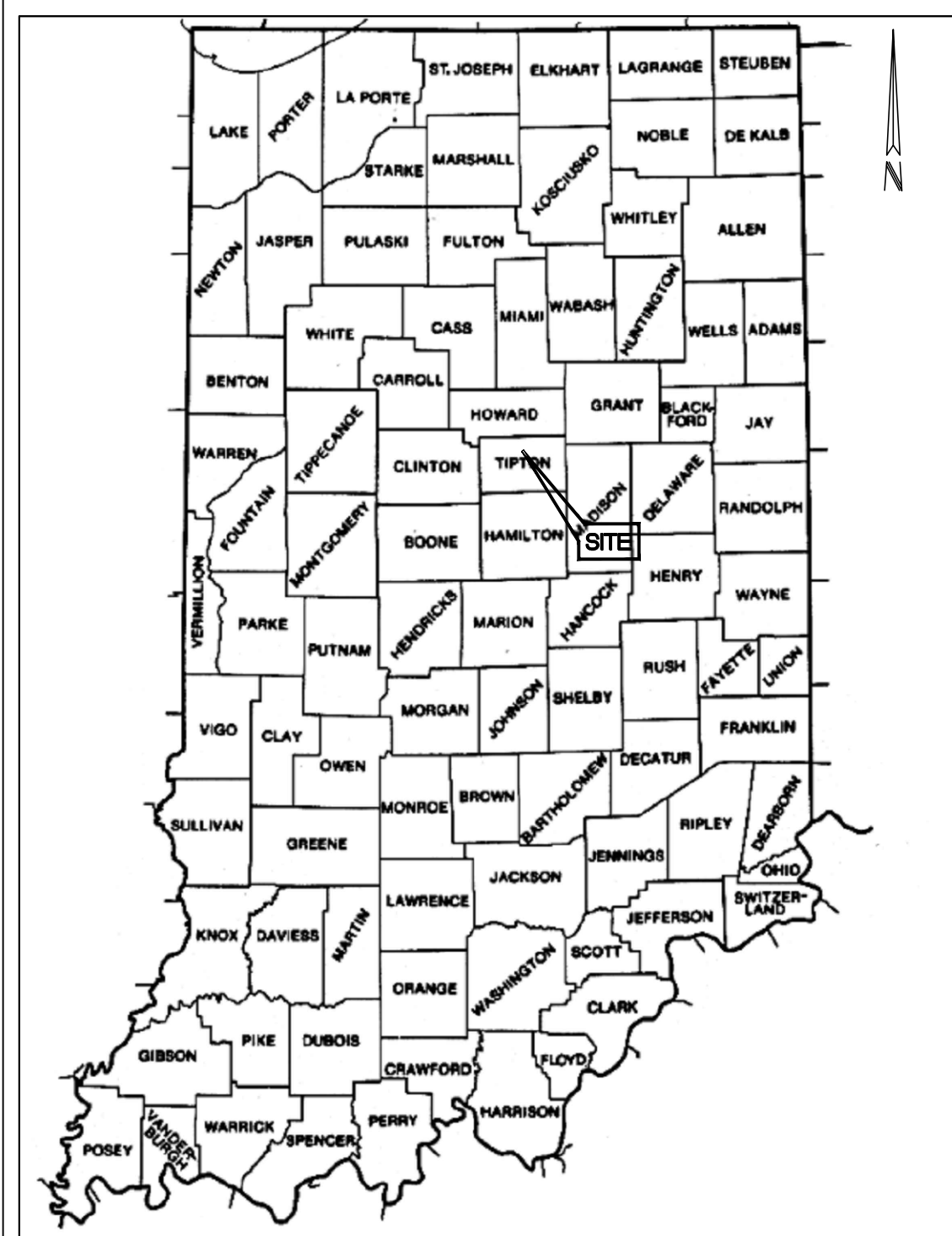
COMMUNICATIONS
CENTURYLINK
PH: 800-201-4099

CAUTION
LOCATIONS OF ALL EXISTING UNDERGROUND UTILITIES SHOWN ON THIS PLAN ARE BASED UPON ABOVE GROUND EVIDENCE (INCLUDING, BUT NOT LIMITED TO, MANHOLES, INLETS, VALVES, AND MARKS MADE UPON THE GROUND BY OTHERS) AND ARE SPECULATIVE IN NATURE. THERE MAY ALSO BE OTHER EXISTING UNDERGROUND UTILITIES FOR WHICH THERE IS NO ABOVE GROUND EVIDENCE OR FOR WHICH NO ABOVE GROUND EVIDENCE WAS OBSERVED. THE EXACT LOCATIONS OF SAID EXISTING UNDERGROUND UTILITIES SHOULD BE VERIFIED BY THE CONTRACTOR PRIOR TO ANY AND ALL CONSTRUCTION.

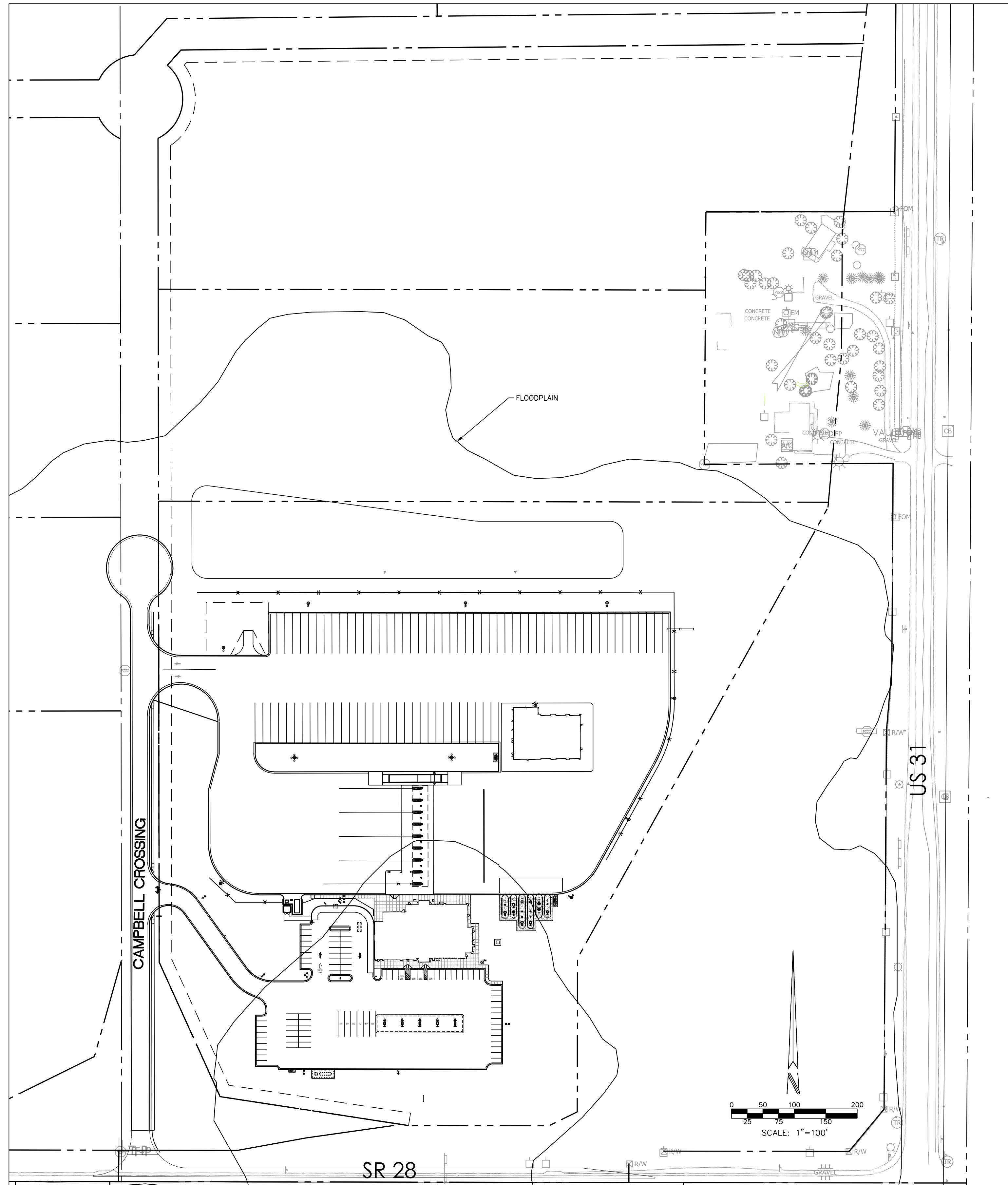
LOCATION MAP:



VICINITY MAP:



CONSTRUCTION PLANS FOR LOVE'S TRAVEL STOPS AND COUNTRY STORES



PROJECT DATA:

PARCEL OWNER: LOVE'S TRAVEL STOPS & COUNTRY STORES, INC.

PARCEL ID: 80-12-12-400-012.000-003

ADDRESS: US 31 AND SR 28
TIPTON COUNTY, INDIANA

PROPERTY AREA: 20.19 ACRES

EXISTING ZONING: B-4/US 31 OVERLAY

PROPOSED ZONING: B-4/US 31 OVERLAY

ADJACENT ZONING: NORTH: B-4/US 31 OVERLAY
SOUTH: AGRICULTURE
EAST: LIGHT INDUSTRIAL
WEST: B-4

PROPOSED USE: TRUCK STOP

FLOODPLAIN DESIGNATION: THIS SITE IS LOCATED WITHIN THE FLOOD HAZARD ZONE "AE" AND "X" PER THE FLOOD INSURANCE RATE MAP: COMMUNITY PANEL NO. 18159C0120D, REVISED JUNE 9, 2014.

THE 100 YEAR BASE FLOOD ELEVATION FOR THE SITE AS ILLUSTRATED ON THE FLOOD INSURANCE RATE MAP FOR TIPTON COUNTY, INDIANA FOR DIXON CREEK 896.00 ± ROUNDED UP TO THE NEAREST 0.5'.

SHEET INDEX:

SHEET	DESCRIPTION
C1.0	COVER SHEET
C2.0	EXISTING CONDITIONS PLAN
C3.0	SWPPP PHASE I
C3.1	SWPPP PHASE II
C3.2	STORMWATER POLLUTION PREVENTION DETAILS
C3.3	STORMWATER POLLUTION PREVENTION NOTES
C5.0	OVERALL SITE PLAN
C5.1	SITE PLAN
C5.2	SITE PLAN
C5.3	PAVEMENT PLAN
C5.4	PAVEMENT PLAN
C6.0	OVERALL GRADING PLAN
C6.1	GRADING PLAN
C6.2	GRADING PLAN
C6.3	GRADING DETAILS
C6.4	ROAD PLAN AND PROFILE
C6.5	CUL-DE-SAC GRADING DETAILS
C7.0	OVERALL UTILITY PLAN
C7.1	UTILITY PLAN
C7.2	UTILITY PLAN
C7.3	UTILITY PLAN TRUCK CANOPY ISLANDS
C7.4	UTILITY PLAN CAR CANOPY ISLANDS
C8.0	CONSTRUCTION DETAILS
C8.1	CONSTRUCTION DETAILS
L1.0	LANDSCAPE PLANS

BENCHMARKS:

TBM #2 BARN NAIL NORTH FACE POWER POLE #210-042
TBM #3 BARN NAIL NORTH FACE POWER POLE #210-031
TBM #1 5/8" REBAR WITH INDOT CAP FLUSH WITH GROUND

SURVEY PROVIDED BY S.J.C.A. ENGINEERS AND SURVEYORS

CRIFE TEAM:

PROJECT MANAGER: DAVID KUEHNEN, PE 317-706-6382
PROJECT ENGINEER: STEV PIERRE, PE 317-706-6309
PROJECT ENGINEER: JACLYN ALTSTADT, EI 317-706-6364
QUALITY ASSURANCE: DAVID KUEHNEN, PE 317-706-6382

C:\2016\160406\20210\Code\Eng\CD\A\1.0_Cover Sheet.dwg, May 12, 2017 3:10 PM, DAVID KUEHNEN, © Paul I. Cripe, Inc.

3939 Priority Way South Drive, Suite 200
Indianapolis, Indiana 46240
(317) 844-6777
E-Mail: cripe@cripe.biz

COVER SHEET
LOVE'S TRAVEL STOPS AND COUNTRY STORES
LOVE'S TRAVEL STOPS AND COMPANY
10601 N. PENNSYLVANIA AVE.
OKLAHOMA, OK 73120

CERTIFIED BY
DAVID K. KUEHNEN
REGISTERED PROFESSIONAL ENGINEER
STATE OF INDIANA
PE 11012161
Date: 03-31-2017

COVER SHEET

811 CALL BEFORE YOU DIG
1-800-382-5544

Drawn By: JACLYN ALTSTADT, EI
Checked By: STEV PIERRE, PE
Quality Assurance: DAVID KUEHNEN, PE
Scale: 0
Sheet: C1.0
Date: 05-12-2017
Project Number: 160406-20210