

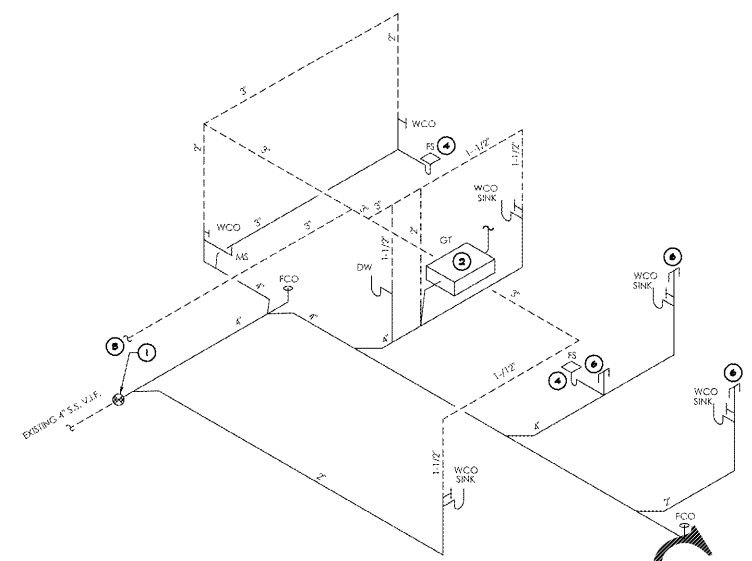
EQUIPMENT LEGEND	
SYMBOL	DESCRIPTION
DW	DISH WASHER
FC	FILE CABINET
IC	ICE-MAKER
IT	IT CABINET
R-6	REFRIGERATOR
LK	LOCKER
MS	MANAGER'S SAFE
MW	MICROWAVE
PT-24	24 X 48 STAINLESS STEEL PREP TABLE
PW	PACKAGING WORK BENCH
REF	REFRIGERATOR
SS	STAINLESS STEEL TABLE
SWH	SHELF - WALL MOUNTED
UR-2	UNDER COUNTER REFRIGERATOR - DOUBLE
UR-1	UNDER COUNTER REFRIGERATOR - SINGLE
US-48	UNDER COUNTER SHELF

**PLUMBING GENERAL NOTES:**

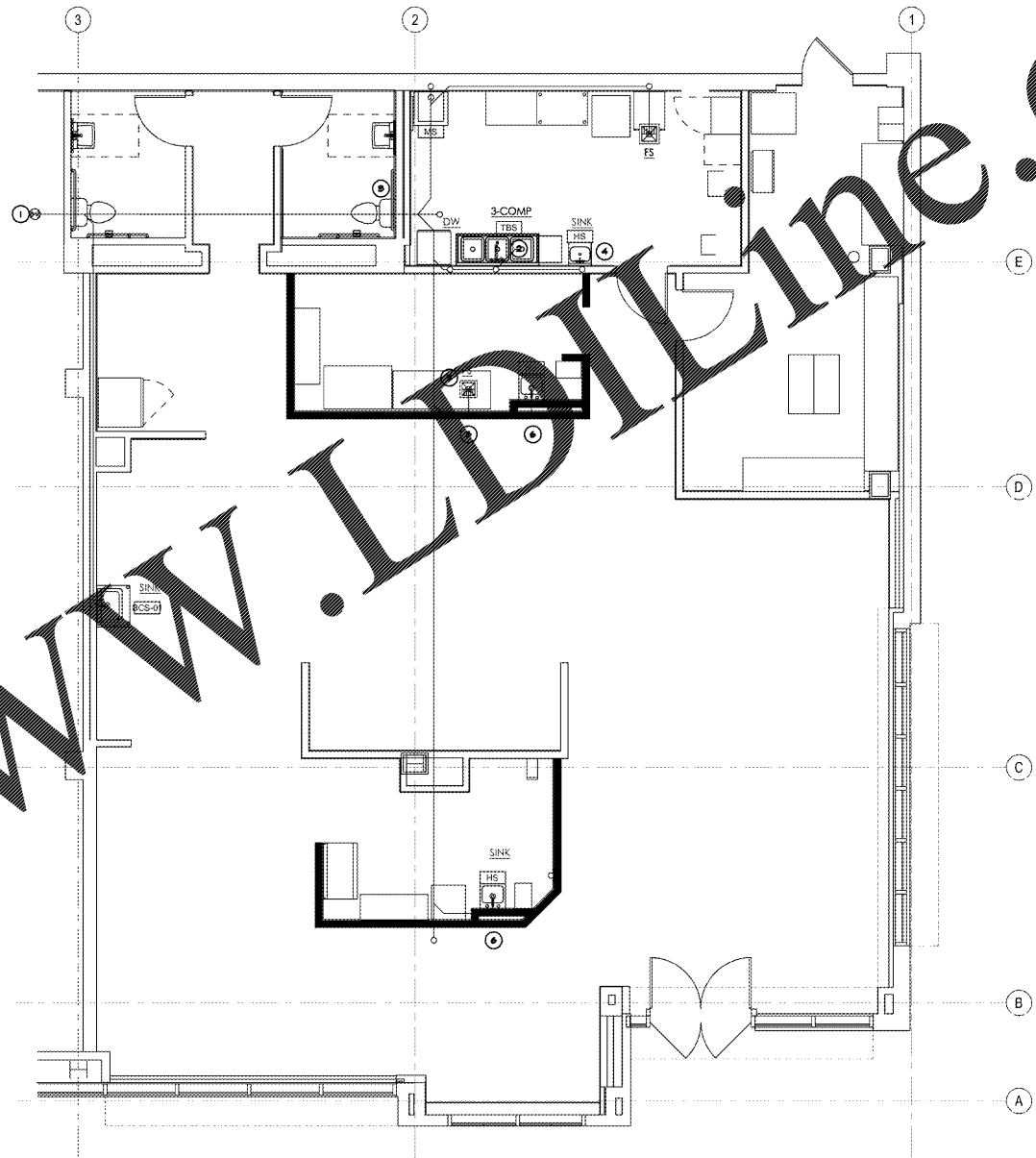
- REFER TO RISER DIAGRAM FOR SANITARY, AND VENT PIPING LINE SIZES.
- PROVIDE TRAP PRIMERS ON RESTROOM FLOOR DRAINS.
- PROVIDE 2" (MINIMUM) AIR GAPS FOR ALL INDIRECT WASTE DISCHARGE.
- FOR ALL SANITARY WASTE LINES, PROVIDE CLEANOUTS AT EACH CHANGE OF DIRECTION INDICATED ON PLANS. DIRECTIONAL CHANGES SHALL BE LIMITED TO 45 DEGREE INCREMENTS. NO 90 DEGREE BENDS PERMITTED FOR SANITARY WASTE LINES.
- WHERE PLUMBING LINES ARE GRAPHICALLY SHOWN TO TEE-OFF IN BOTH DIRECTIONS, THE CONTRACTOR SHALL OFFSET ONE TEE-IN SO THAT A 2" MINIMUM SLOPE CAN BE ACHIEVED FROM MAIN LINE TO FIXTURE CONNECTION POINT.

**KEYED NOTES**

- CONNECTION TO EXISTING SANITARY WASTE LINE. VERIFY EXACT LOCATION, SIZE AND DIRECTION OF FLOW IN FIELD WITH LANDLORD.
- WASTE FROM 3-COMP SINK TO IN-GROUND GREASE INTERCEPTOR. PROVIDE FLOW RESTRICTOR BEFORE THE INLET OF THE INTERCEPTOR TO PREVENT FLOW CONTROL TO SANITARY VENT SYSTEM. INSTALL PER MFG. INSTALLATION INSTRUCTIONS.
- EXISTING SANITARY VENT PIPE TO PENETRATE ROOF. G.C. TO COORDINATE EXACT LOCATION IN FIELD. REUSE EXISTING IF POSSIBLE.
- PROVIDE INDIRECT WASTE AND ADD 1" AIR GAP.
- ROUTE REFRIGERATOR TO DRAIN INTO FLOOR SINK.
- PROVIDE STUDDOR VENT FOR SALES FLOOR FIXTURES.

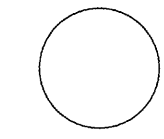


**PLUMBING SANITARY RISER DIAGRAM**  
SCALE: NTS



**PLUMBING SANITARY PLAN**  
SCALE: 1/4"=1'-0"

**Bergmeyer**  
Architectural and Interiors  
1111 S. Orange Ave., Suite 200  
Westlake, FL 32909  
Phone: 888.627.0000  
Fax: 888.627.0000  
www.bergmeyer.com



**dpce**  
DOM PENN CONSULTING ENGINEER  
1301 SOLARIA BLVD  
SUITE 1100  
WESTLAKE, FL 32909  
OR 917.412.2000 | P 817.251.6411

NO.	BY	DATE	DESCRIPTION
MS	04/16/17		ISSUED FOR PERMIT
MS	05/24/17		ISSUED FOR LL REVIEW

SANITARY PLUMBING PLANS

DRAWN BY:  
REVIEWED BY:  
JOB NO:

P300

Order Plans

@

WWW.LDPELINE.COM