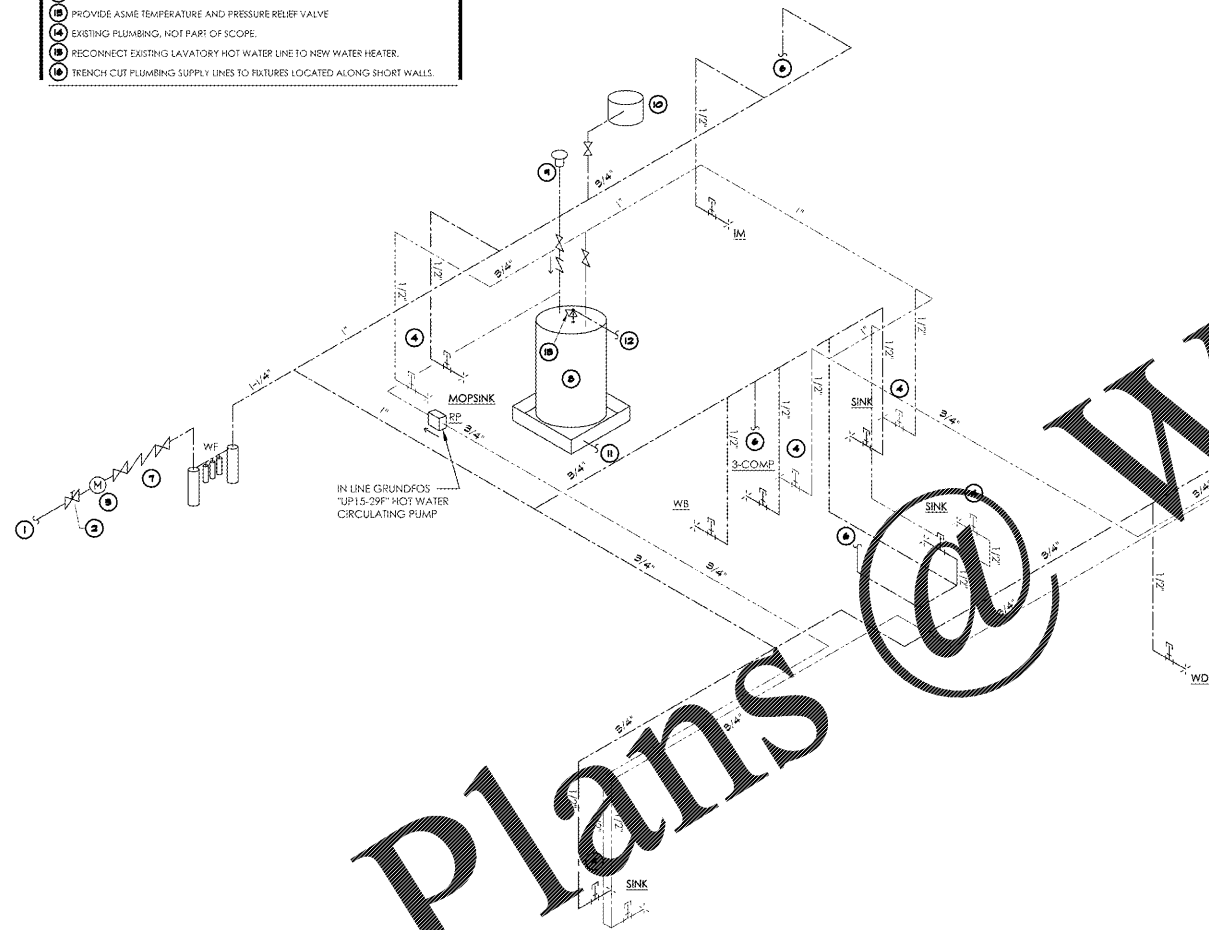


**PLUMBING GENERAL NOTES:**

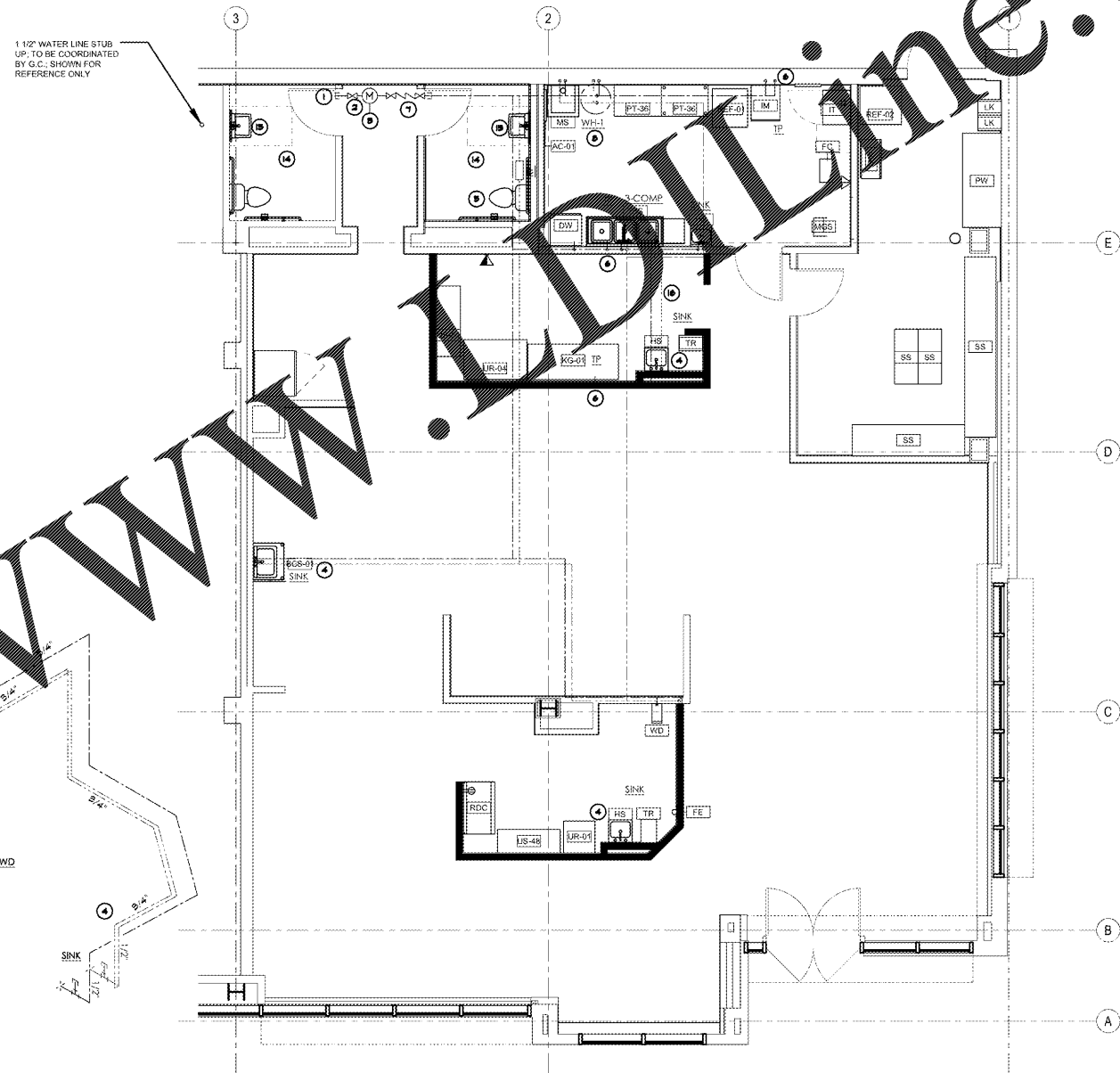
1. PIPE SIZES FOR DROPS TO FIXTURES AND TRAP PRIMERS SHALL BE 1/2" O.N.O. PROVIDE SHROOF BENEATH FIXTURE OR ABOVE CEILING FOR EACH FIXTURE. PROVIDE 12x12" ACCESS PANELS WHERE NECESSARY.
2. NO EXPOSED PIPING.
3. ALL PLUMBING MUST MEET STATE AND LOCAL CODES.

**KEYED NOTES**

1. EXISTING LANDLORD DOMESTIC WATER LINE. VERIFY LOCATION OF BALL VALVE SERVING TENANT SPACE.
2. CONNECT NEW 1-1/2" COLD WATER LINE TO EXISTING LANDLORD SERVICE WATER LINE. T.G.C. SHALL PROVIDE 1-1/4" BALL VALVE CONNECTION TO LL MARK. COORDINATE IN FIELD WITH LANDLORD.
3. PROVIDE WATER SUBMETER. COORD. FINAL LOCATION AND ALL REQUIREMENTS WITH LANDLORD AND UTILITY.
4. PROVIDE TEMPERATURE MIXING VALVE TO SUPPLY FIXTURE WITH 110° WATER.
5. PROVIDE WATER HAMMER ARRESTOR IF NOT IN EXISTING SPACE. VERIFY IN FIELD.
6. PROVIDE TRAP PRIMER ABOVE CEILING OR IN WALL. REFER TO DETAIL ON SHEET P4.0.
7. PROVIDE BACKFLOW PREVENTOR PER LOCAL CODE AND LL REQUIREMENTS.
8. PROVIDE NEW WATER HEATER PER SCHEDULE. VERIFY ALL CLEARANCES IN FIELD. T.G.C. TO PERFORM SERVICE ON WATER HEATER AND PROVIDE ALTERNATE BID AS REQUIRED.
9. VACUUM RELIEF VALVE.
10. EXPANSION TANK. FDA AND ASME APPROVED FOR POTABLE WATER.
11. PROVIDE FULL SIZE WATER HEATER DRAIN TO EXTERIOR OR APPROVED RECEPTACLE.
12. PROVIDE T & P RELIEF VALVE DISCHARGE WITH FULL SIZE PIPE TO EXTERIOR.
13. PROVIDE ASME TEMPERATURE AND PRESSURE RELIEF VALVE.
14. EXISTING PLUMBING, NOT PART OF SCOPE.
15. RECONNECT EXISTING LAVATORY HOT WATER LINE TO NEW WATER HEATER.
16. TRENCH CUT PLUMBING SUPPLY LINES TO FIXTURES LOCATED ALONG SHORT WALLS.



**PLUMBING DOMESTIC WATER RISER DIAGRAM**  
SCALE: NTS



**PLUMBING PLAN**  
SCALE: 1/2" = 1'-0"

**Bergmeyer**

Architecture and Interiors  
11111 Spring Street  
Dallas, TX 75243  
Phone: 214.421.1200  
www.bergmeyer.com

**dpce**

DOM PENN CONSULTING ENGINEER  
1301 SOLARA BLVD  
SUITE 1100  
WESTLAKE, TX 75086  
PHONE: 972.251.9411

NO.	BY	DATE	DESCRIPTION
MS	04/16/17		ISSUED FOR PERMIT
MS	03/24/17		ISSUED FOR LL REVIEW

DOMESTIC WATER  
WATER PLANS

DRAWN BY:  
REVIEWED BY:  
JOB NO:

P200