

REFURBISH HVAC NOTES

- T.G.C. SHALL PROVIDE THE FOLLOWING (BUT NOT LIMITED TO)
 - THE COMPLETE LUBRICATION OF ALL SHAFTS AND BEARINGS THAT HAVE LUBRICATION ZERTS.
 - THE REPLACEMENT OF ALL BELTS, HOSES AND FABRIC/RUBBER COATED ITEMS THAT ARE SUBJECT TO WEAR.
 - REPLACE FILTERS
 - CHECK AMPS OF THE INDOOR MOTOR.
 - TURN UNIT POWER OFF - TIGHTEN ALL ELECTRICAL CONNECTIONS, CONTACTORS, ETC.
 - EXAMINE AND REPAIR ALL ELECTRICAL WIRING, CONTROLS, STARTERS, RELAYS, CAPACITORS AND LIKE ITEMS THAT TEND TO DEGRADE OVER TIME OR BECOME NON-OPERATIONAL. THIS INCLUDES SMOKE DETECTORS.
 - ENSURE DRAIN PAN AND DRAIN LINES ARE CLEAN AND FREE OF BLOCKAGE.
 - GREASE ALL FITTINGS
 - VERIFY ANY WORK REQUIRED BY THE LANDLORD PRIOR TO BID.
 - ALL FINDINGS AND VALUES TO BE NOTED AND PROVIDED TO TENANT'S CONSTRUCTION MANAGER & OR TENANT'S MAINTENANCE DIRECTOR.

CONTRACTOR NOTES

IT SHALL BE THE G.C.'S RESPONSIBILITY TO FIELD VERIFY THE EXISTING HVAC EQUIPMENT (AHU/ACCU) IS OPERATIONAL AND IN GOOD WORKING CONDITION. VERIFY ALL COMPONENTS INCLUDING REFRIGERANT LINES, CONDENSATE, GAS ELECTRICAL ARE FULLY CONNECTED AND OPERATIONAL. G.C. TO COORDINATE WITH ALL TRADES AND CONNECTIONS AND CONTACT THE ARCHITECT AND ENGINEER IF DISCREPANCIES ARE OBSERVED. SO MODIFICATIONS TO THE DRAWINGS CAN BE ADDRESSED IMMEDIATELY.

CONTRACTOR NOTES

IF IS THE RESPONSIBILITY OF THE CONTRACTOR TO NOTIFY THE ARCHITECT, LANDLORD AND TENANT OF ANY DISCREPANCIES ENCOUNTERED ON THE PLANS OR IN EXISTING CONDITIONS PRIOR TO COMMENCEMENT OF WORK.
BIDDERS ARE TO VISIT THE SITE AND FAMILIARIZE THEMSELVES WITH EXISTING CONDITIONS AND SATISFY THEMSELVES AS TO THE NATURE AND SCOPE OF WORK. THE BASE BID SHALL REFLECT INCORPORATIONS TO SYSTEMS AND DEVICES AS REQUIRED BY STATE AND LOCAL CODES WHETHER INDICATED OR NOT ON CONTRACT DOCUMENTS. THE SUBMISSION OF A BID WILL BE EVIDENCE THAT SUCH AN EXAMINATION AND COMPLIANCE WITH GOVERNING CODES / REQUIREMENTS HAS BEEN MADE. LATER CLAIMS FOR LABOR, EQUIPMENT OR MATERIALS REQUIRED OR FOR DIFFICULTIES ENCOUNTERED WHICH COULD HAVE BEEN FORESEEN, HAD AN EXAMINATION AND CODE REVIEW BEEN MADE, WILL NOT BE ALLOWED.

MECHANICAL KEYED NOTES

- THERMOSTATS WITH REMOTE SURFACE MOUNTED TEMPERATURE SENSOR TO BE MOUNTED AT 48" A.F.F. VERIFY LOCATION WITH CONSTRUCTION MANAGER PRIOR TO INSTALLATION.
- NEW SUPPLY DUCTWORK.
- EXISTING AHU-1&2 UNITS TO BE RELOCATED. T.G.C. TO VERIFY INTEGRITY AND REPAIR / REPLACE AS NECESSARY. VERIFY CONDITION AND LOCATION OF EXISTING UNIT, IF ADEQUATE TO PROVIDE DEPENDABLE AND RELIABLE OPERATION. REFER TO REFURBISH NOTE ON THIS SHEET.
- NEW 12" Ø OUTSIDE AIR DUCT TO EXTERIOR GRILLES WITH BACKDRAFT DAMPERS. VERIFY EXACT ROUTING AND CONNECTION POINT AND REQUIREMENTS WITH L.L. IN FIELD PRIOR TO BID.
- EX. DUCT DETECTOR. T.G.C. TO VERIFY CONDITION OF EX. DUCT SMOKE DETECTOR IN R/A DUCT, AND REPAIR / REPLACE IF NECESSARY AS REQUIRED BY LOCAL CODE & LL TO PROVIDE FAN SHUTDOWN.
- EXHAUST FAN INTERLOCK FAN ON/OFF OPERATION WITH LIGHT SWITCH. RUN 6" DIA. DUCT UP TO LANDLORD COMMON EXHAUST. COORDINATE LOCATION WITH IN FIELD.
- NOT USED.
- G.C. TO VERIFY CONDITION OF CONDENSATE AND REFRIGERANT LINES. REPAIR REPLACE AS NECESSARY.
- EXISTING CU-1&2 UNITS TO REMAIN. T.G.C. TO VERIFY INTEGRITY AND REPAIR / REPLACE AS NECESSARY. VERIFY CONDITION AND LOCATION OF EXISTING UNIT, IF ADEQUATE TO PROVIDE DEPENDABLE AND RELIABLE OPERATION. REFER TO REFURBISH NOTE ON THIS SHEET.

MECHANICAL SYMBOLS

SYMBOL	DESCRIPTION	SYMBOL	DESCRIPTION
☒	SUPPLY DIFFUSER	⊕	THERMOSTAT SENSOR
☒	RETURN AIR GRILLE	⊖	DUCT DETECTOR
☒	EXHAUST FAN	— —	F.D. FIRE DAMPER
☒	FIRE DAMPER	— — —	DUCT CONN. TO RECTANGULAR DUCT WORKMAN FITTING & VOLUME DAMPER
— —	VOLUME DAMPER	⊕	TYPE OF AIR DEVICE
		— —	AIR QUANTITY (CFM)

O.S.A CALCULATION

SPACE	SQ.FT.	# PEOPLE	CFM/SQ.FT.	CFM/PP	DESIGN CFM
RETAIL SALES AREA	2069		0.30		620
STOCK/STORAGE RM.	700		0.15		105
TOTAL REQUIRED					725
TOTAL PROVIDED					725 TOTAL

EX. (ELECTRIC) SPLIT SYSTEM(S)

MARK	TON	MANUFACTURER	MODEL #	COOLING CAPACITY	HEATING KW	CFM	EER	H.P.	ESP	MCA	MOC/P	VOLT/PHASE	WEIGHT	OSA	NOTES
AHU-1&2	5	LENIXOX			11.2	STD						208/1		340 CFM	G.C. TO VERIFY ALL ELECTRICAL REQUIREMENTS PRIOR TO BID.
CU-1&2		LENIXOX	CBK27UH	60,000		2000		STD	.5			208/1		360 CFM	

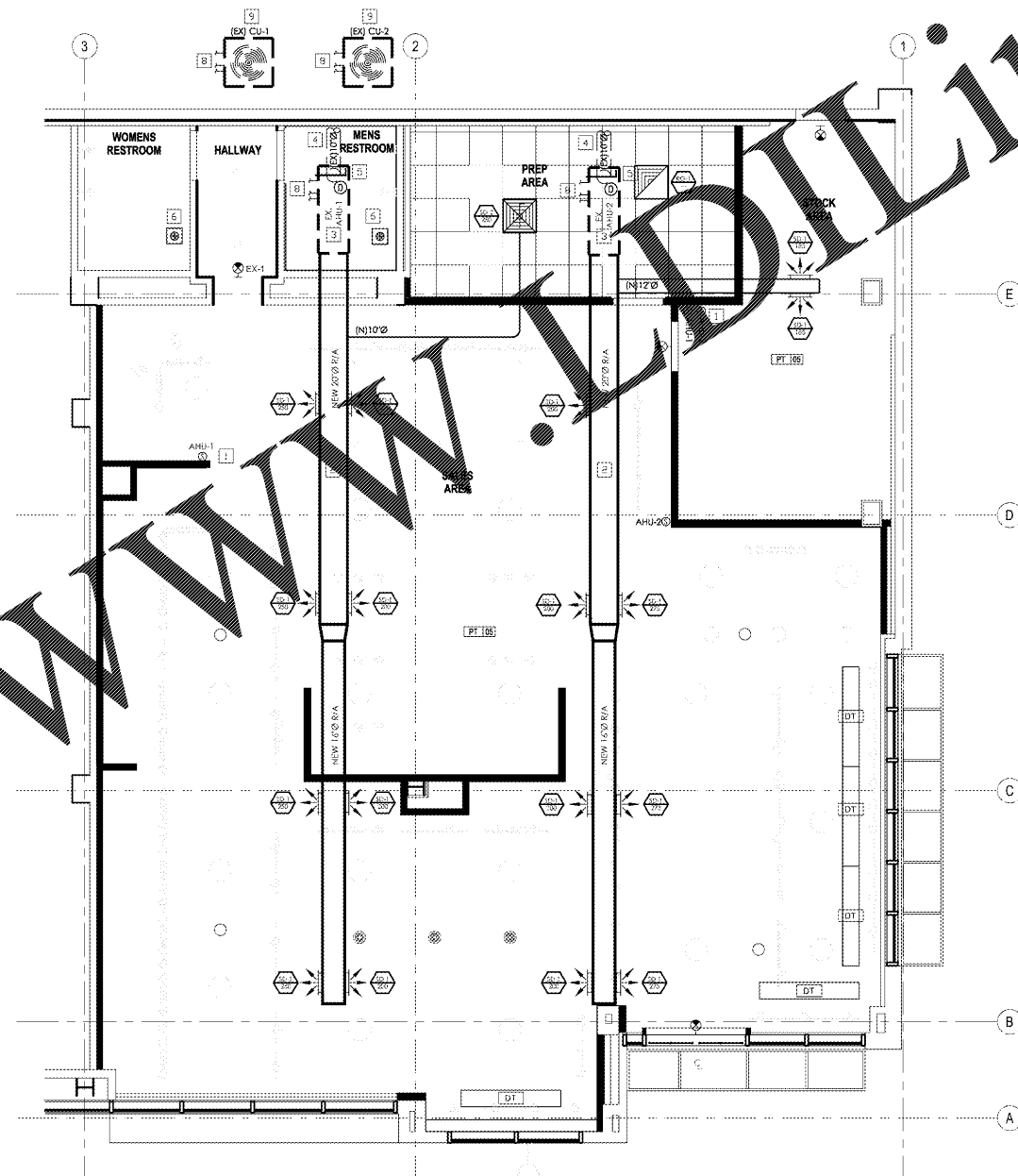
HVAC WORK TO CONFORM TO ALL APPLICABLE STATE, LOCAL AND REGULATORY AGENCY CODE REQUIREMENTS. T.G.C. SHALL USE LANDLORD APPROVED AIR BALANCING CONTRACTOR. REPORT SHALL INCLUDE OUTSIDE AIR CFM AND TOILET EXHAUST CFM.

SUPPLY/RETURN DIFFUSER SCHEDULE

MANUFACTURER	MODEL NO.	TYPE	FINISH	SIZE	MAX. MOISTURE CRITERIA	DAMPERS	NOTES
NAILOR OR EQUAL	SD1VC	SD-1	LOUVERED SUPPLY GRILLE	24"X24"	35		PROVIDE MOUNTING FRAME FOR GYP. BD. HANG MOUNTING.
TITUS	OMNR	SD-2	LAY-IN	24"	35		
TITUS	50-F	RG-1	ASSUM. OFF-WHITE			1	EX. DAMPER/EXTRACTOR AIR SCOOOP

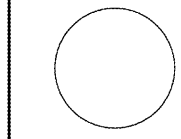
NEW EXHAUST FAN SPEC.

MANUFACT.	MODEL NO.	TYPE	CFM	H.P.	VOLTS	ACCESSORIES	NOTES
BROAN	L300L	EF-2	300	1/2	120	BACKDRAFT DAMPER	



MECHANICAL PLAN
SCALE: 1/4" = 1'-0"

Bergmeyer
Architectural and Planning
3150 Peachtree Road, Suite 100
Atlanta, GA 30328
Phone: 404.525.1225
Fax: 404.525.1708
www.bergmeyer.com



dpce

DON PENN CONSULTING ENGINEER
1501 SQUARE DRIVE
BLDG. 11 SUITE 1400
WESTLAKE, TX 76062
917.410.0500 • F 917.281.0411

NO.	BY	DATE	DESCRIPTION
MS	04/18/17		ISSUED FOR PERMIT
MS	03/24/17		ISSUED FOR LL REVIEW

SAVANNAH BEE ATLANTA

WESTSIDE PROVISIONS
1168 HOWELL MILL RD
ATLANTA, GA 30318

MECHANICAL PLAN

DRAWN BY:	Astro
REVIEWED BY:	Chris
JOB NO.:	M010

M100

Order Plans @

C:\Users\penn\Documents\3/3/2017 12:28:47\SPC_A3.DWG\WESTSIDE_CENTRAL_mech.mxd