

SYMBOL	TAG	MANUFACTURER	CATALOG NUMBER	WATT	FIXTURE DESCRIPTION	NOTES
—	FAN-1	REJUVINATION	FALCON CEILING FAN A8902	45W	MATTE BLACK CEILING FAN/MATTE BLACK BLADES.	EC TO CONFIRM DOWN ROD LENGTH W/ INTERIOR DESIGNER. E.C. TO PROVIDE W/HANG STRAIGHT CANOPY.
---	LS-1 (P2)	THREEMATE		6W FT.	LED EDGE LIGHTING SYSTEM	LENGTH PER FIXTURE IN PARENTHESES, INTEGRATED LED DRIVER.
---	LS-1 (I4)	THREEMATE		6W FT.	LED EDGE LIGHTING SYSTEM	LENGTH PER FIXTURE IN PARENTHESES, INTEGRATED LED DRIVER.
●	PC-2A	ARTERIOS HOME	GARRISON ROUND PENDANT	25W	MOLDED CLEAR GLASS SPHERE PENDANT CLINCHED WITH A VINTAGE BRASS BALL. ONE 25-WATT, 120V, A19 MEDIUM BASE INCANDESCENT BULB REQUIRED.	E.C. TO CONFIRM HANG HEIGHT W/ INTERIOR DESIGNER.
○	PC-2B	RESTORATION HARDWARE	20th CENTURY FACTORY FRAME CLEAR GLASS BARN PENDANT	40W MAX	GLASS BAR PENDANT	
●	RC-1	AMERLUX	HORNET HP DOWNLIGHT	23W	LENSLED LED DOWNLIGHT	FIXTURES WITH "BX" DESIGNATION TO BE PROVIDED WITH 10-MIN BATTERY BACK UP OPTION.
□	RC-2	METALUX	Z2GR-LD4-32-F1 UNV-LSSD-CD4-U	34W	2'X2' LENSED TROFFER	
⊗	SW-1	RESTORATION HARDWARE	20th CENTURY LIBRARY DOUBLE SCONE	40W MAX	DECORATIVE TRIPLE JOINTED SOLID BRASS LIBRARY SCONE	
⊗	SW-2	ARTERIOS HOME	MADLINE WALL SCONE	40W MAX	MADLINE WALL SCONE	
⊗	SW-3	BARN LIGHT ELECTRIC	THE ORIGINAL	48W MAX	GALVANIZED RIM PENDANT - WALL SCONE	EC TO CONFIRM HANG HEIGHT W/ INTERIOR DESIGNER. PRIOR TO ORDERING. EC TO CONFIRM FINISH W/ INTERIOR DESIGNER. PRIOR TO ORDERING.
○	PC-1	BARN LIGHT ELECTRIC	THE ORIGINAL	48W	GALVANIZED RIM PENDANT	EC TO CONFIRM HANG HEIGHT W/ INTERIOR DESIGNER. PRIOR TO ORDERING. EC TO CONFIRM FINISH W/ INTERIOR DESIGNER. PRIOR TO ORDERING.
●	PC-3	AMERLUX	ROCK 350 PENDANT	14W	3.5' ROUND LENSED LED PENDANT CYLINDER	EC TO CONFIRM HANG HEIGHT W/ INTERIOR DESIGNER. PRIOR TO ORDERING. EC TO CONFIRM FINISH W/ INTERIOR DESIGNER. PRIOR TO ORDERING.
—	PC-4	EATON	SNLED STRIP LIGHT	41W	3.5' ROUND LENSED LED PENDANT CYLINDER	EC TO CONFIRM HANG HEIGHT W/ INTERIOR DESIGNER. PRIOR TO ORDERING.
○	OX-1			18W	EXISTING RECESSED CAN/LT	EXISTING TO REMAIN. EC TO HOLD VERRY CONDITIONS AND MAKE REPAIRS AS NEEDED.
---	T-1 (2)	AMERLUX				LENGTH PER FIXTURE IN PARENTHESES
---	T-1 (3)	AMERLUX				LENGTH PER FIXTURE IN PARENTHESES
---	T-1 (4)	AMERLUX				LENGTH PER FIXTURE IN PARENTHESES
---	T-1 (5)	AMERLUX				LENGTH PER FIXTURE IN PARENTHESES
---	T-1 (6)	AMERLUX				LENGTH PER FIXTURE IN PARENTHESES
---	T-1 (8)	AMERLUX				LENGTH PER FIXTURE IN PARENTHESES
●	TM-1	AMERLUX	C3TVA14-19-LED-XR-TEK-120-WF-300-97-CRSP	19W	ACCENT TRACK	COORDINATE COLOR OF TRACK W/ INTERIOR DESIGNER.
●	TM-2	AMERLUX	C3TVA14-19-LED-XR-TEK-120-WF-300-97-CRSP	19W	ACCENT TRACK	COORDINATE COLOR OF TRACK W/ INTERIOR DESIGNER.

*** CONFIRM ALL LIGHT FIXTURES WITH ARCHITECT AND/OR PROJECT MANAGER PRIOR TO ORDERING. ***

GENERAL RCP NOTES

- EMERGENCY LIGHTS TO BE INSTALLED ON SEPARATE CIRCUIT. SEE ELECTRICAL DRAWINGS.
- IT IS THE GENERAL CONTRACTOR'S RESPONSIBILITY TO SUBMIT PLANS FOR MODIFICATION OF THE FIRE SPRINKLER SYSTEM AS REQUIRED TO ACCOMMODATE THE NEW TENANT SPACE. G.C. MUST USE I.L. SPRINKLER CONTRACTOR FOR ALTERATIONS. SUBMIT SHOP DRAWINGS TO THE LANDLORD/OWNER AND ARCHITECT FOR REVIEW.
- ALL FIXTURES TO BE INSTALLED IN ACoustic CEILING AREA SHALL BE LOCATED AT THE CENTER OF 2'-0" X 4'-0" CEILING GRID, UNLESS OTHERWISE NOTED.
- ALL FINISHING AND PAINTING REQUIREMENTS SHALL BE DIRECTED TO THE FINISHES SCHEDULE, SPECIFICATIONS, AND INTERIOR ELEVATIONS.
- ALL LIGHT FIXTURES INCLUDING EXIT LIGHTS, EMERGENCY LIGHTS, ETC., SHALL BE FURNISHED BY LOCOCLEAN, INSTALLED BY THE CONTRACTOR. SEE ELECTRICAL DRAWINGS FOR MANUFACTURER AND MODEL NUMBER.
- CONTRACTOR TO USE LASER FOR LEVELING OF ALL SOFFITS, CEILINGS AND SUSPENDED GRIDS. ELECTRICAL CONTRACTOR TO VERIFY IF SERVICE PROVIDED IS ADEQUATE. IF NOT, NOTIFY ARCHITECT IMMEDIATELY.
- ALL EQUIPMENT SHALL BEAR I.L. LABELS.
- ELECTRICAL CONTRACTOR MUST PROVIDE AN IDENTIFICATION NAMEPLATE ON TENANT'S MAIN ELECTRICAL SERVICE FUSIBLE DISCONNECT SWITCH IN LANDLORD'S DISTRIBUTION PANEL. NAMEPLATE MUST BE 1/8" THICK PLASTIC, BLACK ON WHITE ENGRAVED TO LEAVE WHITE LETTERS. THE SIZE SHALL BE ONE INCH HIGH BY REQUIRED LENGTH WITH TENANT'S SPACE NUMBER ENGRAVED ON IT. PERMANENTLY AFFIX TO DISTRIBUTION PANEL.
- ALL FIRE DAMPERS MUST BE IDENTIFIED BY A STICKER INSTALLED ON CEILING BELOW. DUCT FIRE DAMPER MUST BE INSTALLED WITH A BREAKAWAY CONNECTION. PLENUM CANNOT CONTAIN ANY COMBUSTIBLES.
- TAPER ANY CEILING TILE EDGE THAT IS CUT TO FIT INTO THE CEILING GRID.
- IF REQUIRED, ALL LIGHT FIXTURES SHALL BE TYPED IN ACCORDANCE WITH UNDERWRITERS LABORATORIES #9201.
- SEE SEISMIC BRACING / SUPPORT DETAILS ON FRAMING/SSMVC DETAIL SHEET IF REQUIRED BY BUILDING DEPARTMENT.

LIGHTING KEYED NOTES

- EMERGENCY/EXIT LIGHTING IN SALES AREA SHALL BE CONNECTED TO DEDICATED CIRCUIT ON UNSWITCHED LEG.
- SWITCH LOCATIONS FOR CONTROL OF STORE LIGHTING. TGC SHALL PROVIDE ALL LABOR AND MATERIALS INCLUDING BUT NOT LIMITED TO CONTACTORS, ENCLOSURES, CONDUCTORS, ETC. TO PROVIDE A COMPLETE SYSTEM. VERIFY EXACT LOCATION PRIOR TO INSTALLATION.
- INTEGRAL CURRENT LIMITER. AMP SIZE INDICATED. COORDINATE LIMITERS WITH TRACK MANUFACTURER PRIOR TO PURCHASE.
- (1) DAYLIGHT SENSORS ROUTE THRU WALL SWITCH & DS. IN SERIES ELECTRICAL CONTROL TO INSTALL "LIGHTSAVER" DAYLIGHT SENSOR BY WATTSOPPER, MODEL #LS-101 AS INDICATED AREA TO CONTROL GENERAL LIGHTING AT THE FRONT OF THE STORE WITH 10' OF STOREFRONT FOR ZONE (1). SENSOR WILL SHUT OFF LIGHTS WHEN AMBIENT LEVELS REACH 50 FC AND TURN ON LIGHTS WHEN LEVELS DROP BELOW 40 FC.
- ELECTRICAL CONTRACTOR TO PROVIDE WALL MOUNTED OCCUPANCY SENSOR (WATTS STOPPER # UW-100-24). COORDINATE FAN TIE IN.
- EMERGENCY/EXIT LIGHTING IN STOCK AREA SHALL BE CONNECTED TO LOCAL CIRCUIT UNSWITCHED LEG.
- PROVIDE TIME CLOCK CONTROL OF STORE FRONT LIGHTING. TIMES SCHEDULED TO BE DETERMINED BY THE LANDLORD.

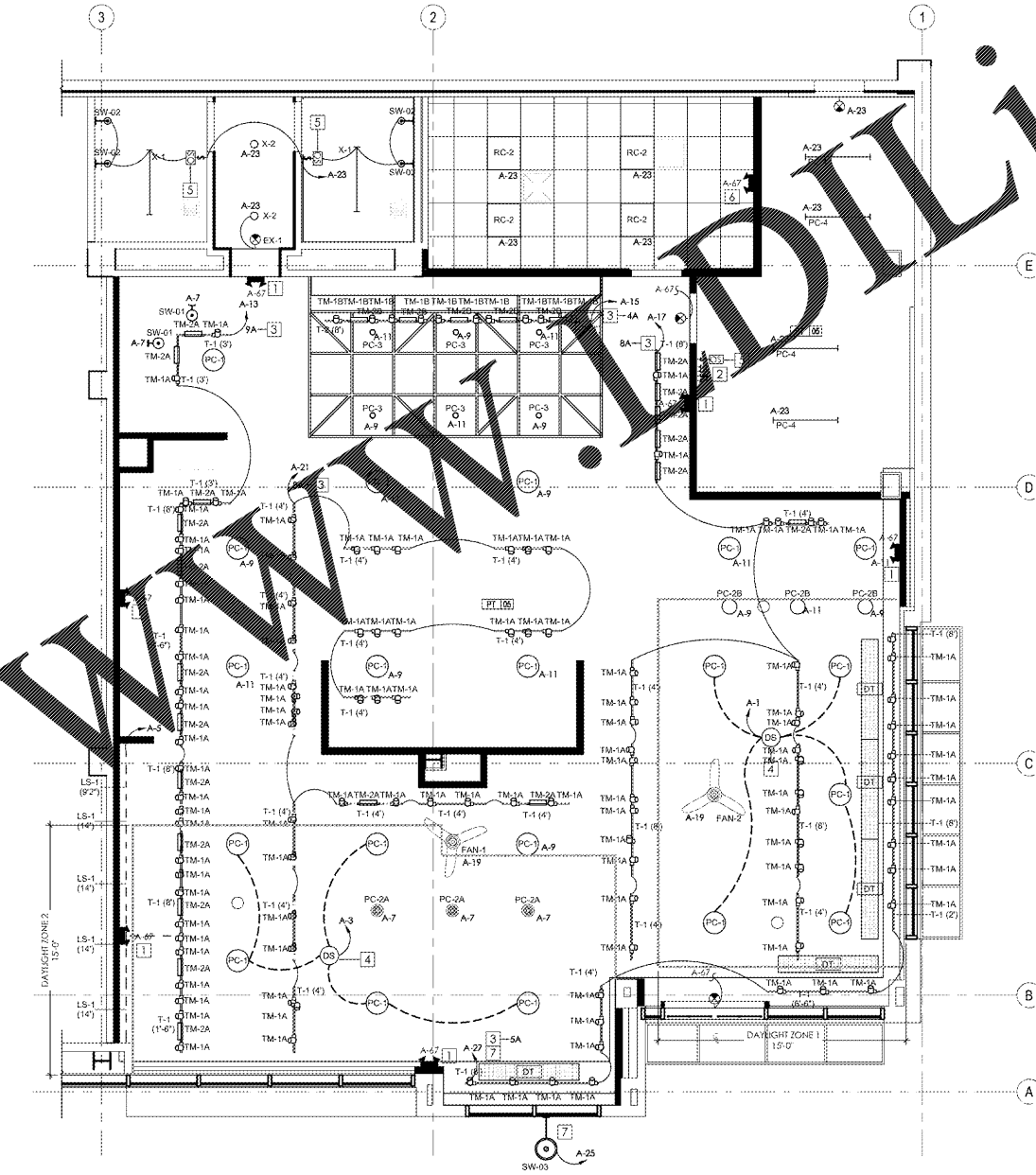
NOTE: ATTENTION LIGHTING SUPPLIER CONTRACTOR: ENSURE ALL LIGHTING IS RATED FOR THE PLENUM IS PLENUM RATED.

ALL EMERGENCY & EXIT LIGHTS MUST HAVE A BATTERY BACKUP.

ALL LOW VOLTAGE LIGHTS TO BE IN COMPLIANCE WITH THE NATIONAL ELECTRICAL CODE (NEC) REQUIREMENTS FOR LOW VOLTAGE LIGHTING.

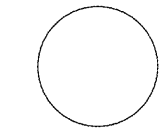
ALL MATERIALS AND WORKMANSHIP SHALL RETURN AIR PLENUM SHALL BE "UL LISTED" (APPROVED) AS PER BUILDING DEPARTMENT REQUIREMENTS. VERIFY REQUIREMENTS WITH THE ARCHITECT AND THE BUILDING DEPT. PRIOR TO START OF WORK.

WHEN REQUIRED, IT IS THE OWNER'S RESPONSIBILITY TO CONTRACT WITH A COMMISSIONING AUTHORITY TO COMPLY WITH LOCAL CODES.



LIGHTING PLAN
SCALE: 1/4" = 1'-0"

Bergmeyer
ARCHITECTS AND INTERIORS
315 S. BERRY STREET
PHOENIX, AZ 85004
PH: 602.944.1000
WWW.BERGMEYER.COM



dpce

DON PENN CONSULTING ENGINEER
1307 S. GARDNER BLVD.
BLDG. 11, SUITE 1400
WESTLAKE, TX 76069
817.410.3369 • 817.251.8411

ISSUED FOR PERMIT
ISSUED FOR ALL REVIEW
DATE DESCRIPTION

SAVANNAH BEE ATLANTA

WESTSIDE PROVISIONS
1168 HOWELL MILL RD
ATLANTA, GA 30318

LIGHTING PLAN

DRAWN BY: AUSA
REVIEWED BY: CHESTER
JOB NO: 16201-00

E100

Order Plans @ www.Line.com

C:\Users\paul\Documents\3/3/2011 12:23:40\SPC_31614161\WESTSIDE_CENTRAL_planning.rvt