



RELEASED FOR
 CONSTRUCTION

NO.	DATE	DESCRIPTION
MS 541917	ISSUED FOR PERMIT/BD	
MS 032417	ISSUED FOR LL REVIEW	

SAVANNAH BEE COMPANY

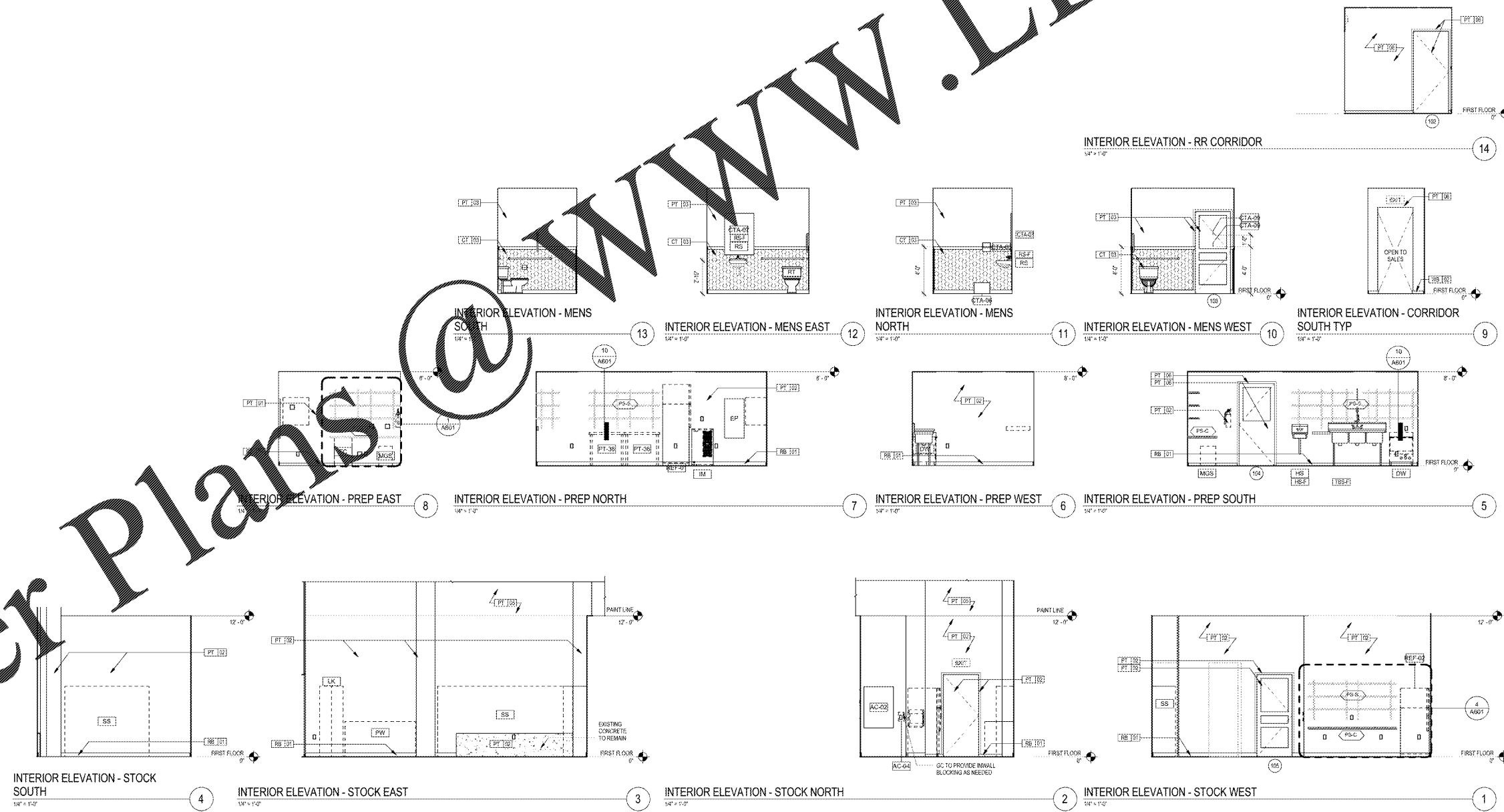


WESTSIDE PROVISIONS
 1100 HOWELL MILL RD SUITE A01
 ATLANTA, GA 30318

INTERIOR ELEVATIONS -
 BACK OF HOUSE

DRAWN BY:	MS
REVIEWED BY:	JP
JOB NO.:	10201 02

A203



4/19/2017 12:17:01
 C:\Users\mchambers\Documents\2017\ATLANTA WESTSIDE_CENTRAL_replacement

Order Plans @ WWW.LDILine.com