

**SUMMARY OF FINISHES**

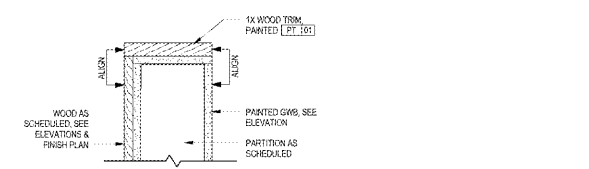
TAG PREFIX	NO.	TYPE	MANUFACTURER	STYLE/MODEL	COLOR	COMMENTS
ACT	01	ACOUSTIC TILE	ARMSTRONG	D42 ULTRA HEALTHSTONE SQUARE LAY-IN TILE 15 1/2" PRELUDE GRID	WHITE	
ACT	02	ACOUSTIC TILE	ARMSTRONG	D42 OPTIMA REGULAR TILE 5 1/2" SQUARE XL GRID	WHITE	
AF	01	ANTI-FATIGUE MAT	TBD	TBD	TBD	
CF	01	ELFBERCELLED GOOD	SPINNAWN	EMERALD	TBD	
CT	01	CERAMIC TILE - HEX	CROSSVILLE	SAVOY 4"X4" HEXAGON TILE MATTE FINISH ITEM #15138 104933	WHITE	USE 3/16"X1/2" GROUT JOINT WITH TILE CONTACT: LORR BOWERS, PH: 508 759 2791, E: lbowers@crossville.com
CT	02	CERAMIC TILE - SUBWAY	CROSSVILLE	SAVOY 3"X6" SUBWAY T.E. MATTE FINISH ITEM #15130 10306M	WHITE	CONTACT: LORR BOWERS, PH: 508 759 2791, E: lbowers@crossville.com
CT	03	CERAMIC TILE - HEX	ROCA	OC MOBAIDS 2X2 HEXAGON	WHITE MATTE	CONTACT: DOL. TONY BUTLIN, PH: 617 592 2293, E: tony@diverobooks.com
ES	01	EXTERIOR WALL - BOARD AND BATTEN STYLE	HARDIE BOARD	HARDIPANEL VERTICAL SIDING	PRIMED FOR PAINT	
FM	01	GLAZING FILM	3M	3M SUN CONTROL, PRESTIGE 70	TBD	SEE INTERIOR ELEVATIONS FOR EXTERIOR WINDOW LOCATIONS
FM	02	GLAZING FILM	3M	GLAZING OF PAQUE FILM	TBD	SEE INTERIOR ELEVATIONS FOR EXTERIOR WINDOW LOCATIONS
FRP	01	HIGH IMPACT WALLCOVERING	OS ACROZYN	647 ACROZYN 4003	#008 BLAUE	
FRP	02	HIGH IMPACT WALLCOVERING	OS ACROZYN	647 ACROZYN 4003	#008 BLACK	SWIIDE FINISH
FT	01	PORCELAIN TILE	TBD	TBD	TBD	
GR	01	GROUT	MAPEI		47 SHARCOVAL	
MT	01	METAL MANNING	ALUS		71 TITILE	CONTACT: DAVID SHROCKE, PH: 610 348 8821, E: david@alusa.com
MR	02	METAL SKURIN	HANNEER	H3588	PE-07	
PT	01	PAINT	BENJAMIN MOORE	AF-10 GARDENIA	EGG	
PT	02	PAINT	BENJAMIN MOORE	NC-31 INTENSE WHITE	EGG	
PT	03	PAINT	BENJAMIN MOORE	2356 NORTH SEA	EGG	PAINTED PATTERN USING CUSTOM STENCIL, REQUIRED CONTRACTOR
PT	04	PAINT	BENJAMIN MOORE	TBD (FINISHED OUT WHITE)	EGG	
PT	05	PAINT	BENJAMIN MOORE	2190-10 BLACK BEAN SOUP	EGG	
PT	06	PAINT	BENJAMIN MOORE	CC 542 WELLDW	EGG	
PT	07	PAINT	SPIC	BLACK	EGG	
RB	01	RUBBER BASE	JOHNSONITE	CURTAIN WALL PAINT	BLACK	
RB	02	RUBBER BASE	JOHNSONITE	STRAIGHT RUBBER BASE, 4" TALL	46 BLACK	
RB	03	RUBBER BASE	JOHNSONITE	STRAIGHT RUBBER BASE, 4" TALL	46 BLACK	
SC	01	STAINLESS STEEL	SURECRETE	ECOSTAIN	EGG	SEE TO MATCH UP A RANGE OF THE TWO COLORS LISTED FOR FINISH
TB	01	TILE BASE	ROCA	8X8 DOVE BASE (AT188)	WHITE ICE MATTE U281	CONTACT: DOL. TONY BUTLIN, PH: 617 592 2293, E: tony@diverobooks.com
UCZ	01	UCZ	ARMSTRONG	MIRATIONS BOT WITH 800 STRIKE 12"X12"	NATURAL BEIGE	
WB	01	WOOD BASE	TBD	4" SQUARE PROFILE	PAINTED PT-01 UNLESS NOTED OTHERWISE - SEE ELEVATIONS	
WB	02	WOOD BASE	TBD	4" SQUARE PROFILE	PAINTED PT-02 UNLESS NOTED OTHERWISE - SEE ELEVATIONS	
WB	03	WOOD BASE	TBD	4" SQUARE PROFILE	PAINTED PT-03 UNLESS NOTED OTHERWISE - SEE ELEVATIONS	
WV	01	WALLCOVERING	FORBO	BULLETIN BOARD	2208	
WV	02	WALLCOVERING	TBD	TBD	TBD	
WV	03	WALLCOVERING	SERNA	SERIES 600	EGG	
WM	01	WALK-OFF MAT	SIRWOOD	WALK-OFF MAT	EGG	
WM	02	WALK-OFF MAT	WAN GELDER INC.	LEGOS	EGG	
WM	03	WALK-OFF MAT	WAN GELDER INC.	MIRATIONS BOT WITH 800 STRIKE 12"X12"	EGG	

**PARTITION LEGEND**

- EXISTING PARTITION TO REMAIN
- - - EXISTING PARTITION TO BE REMOVED
- ▬ NEW PARTIAL HEIGHT PARTITION
- ▬ NEW PARTITION
- ▬ RATED WALLS (VERIFY)
- ▬ NOT IN CONTRACT (NIC)
- ▬ EXISTING DOOR TO REMAIN
- ▬ NEW DOOR
- ▬ EXISTING WINDOW
- ▬ WINDOW TAG
- ▬ DOOR TAG
- ▬ WINDOW TAG
- ▬ DOOR TAG

- FINISH PLAN NOTES**
- FINISHES TO BE NEW U.O.N.
  - ENSURE SURFACES TO RECEIVE FINISHES ARE CLEAN, TRUE, AND FREE OF IRREGULARITIES. DO NOT PROCEED WITH WORK UNTIL UNSATISFACTORY CONDITIONS HAVE BEEN CORRECTED.
  - FLOOR TO BE LEVEL TO 1/8" VARIANCE WITHIN 10'x10'.
  - GO TO APPLY SELF-LEVELLING COMPOUND TO ENSURE LEVEL SURFACE FOR INSTALLATION OF ROLLING SHELVING (MAX 1/4" DIFFERENTIAL).
  - FLOOR TO BE SMOOTH U.O.N. REFER TO FINISH PLAN FOR EXTENTS.
  - BASE TO BE 1/2" U.O.N. PROVIDE STRAIGHT BASE AT CARPET, CURVE BASE AT NEAR-90° FLOORING.
  - WALLS TO BE PAINTED PT-01, U.O.N.
  - GWB DESIGNS TO BE PAINTED WHITE, MATTE FINISH TO MATCH ACT TILE.
  - PAINT FINISHES TO BE AS FOLLOWS:
    - \*SEMI-GLOSS - DOORS, FRAMES, WINDOW TRIM
    - \*EGGSHELL - WALLS
    - \*FLAT - CEILINGS

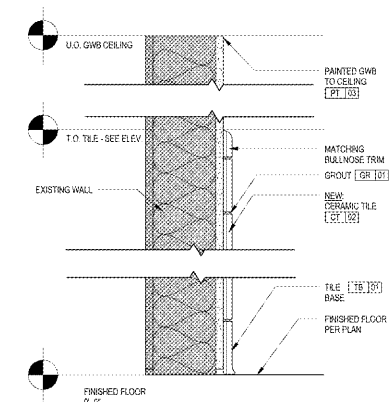
- FINISH PLAN LEGEND**
- SHIPLAP WOOD [WB 101]
  - EXTENTS OF TILE [CT 01, CT 02] REFER TO ELEVATION
  - EXTENTS OF SIDING [ES 01, ES 02] REFER TO ELEVATIONS
  - EXISTING CONCRETE TO BE STAINED [SC 01]
  - EXTENTS OF PAINT AT FLOOR [PT 01, PT 02]
  - CARPET ROLL [FT 01]



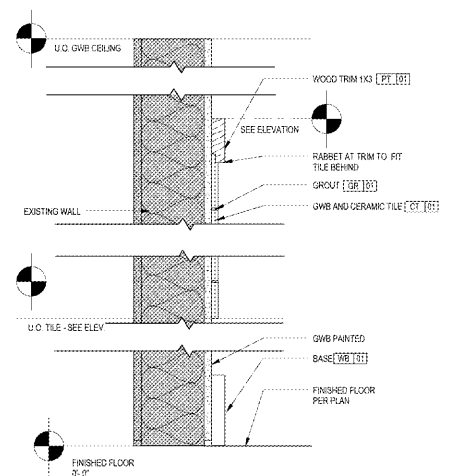
**PLAN DETAIL @ WOOD END CAP 1**  
3/4" x 1'-0"



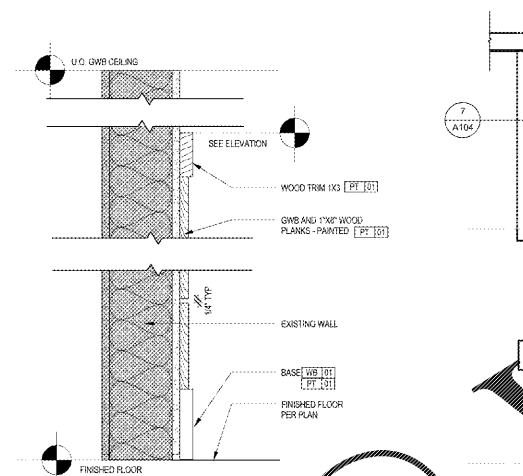
**PLAN DETAIL @ WOOD END CAP 2**  
3/4" x 1'-0"



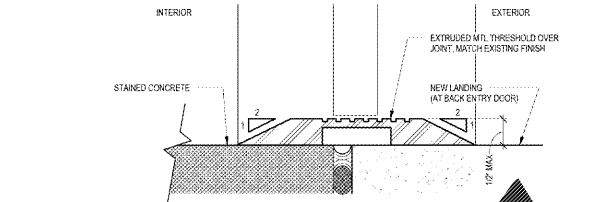
**DETAIL @ CERAMIC TILE WALL FINISH AND TILE BASE**  
3/4" x 1'-0"



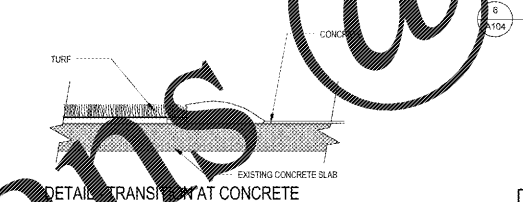
**DETAIL @ CERAMIC TILE WALL AND WOOD BASE**  
3/4" x 1'-0"



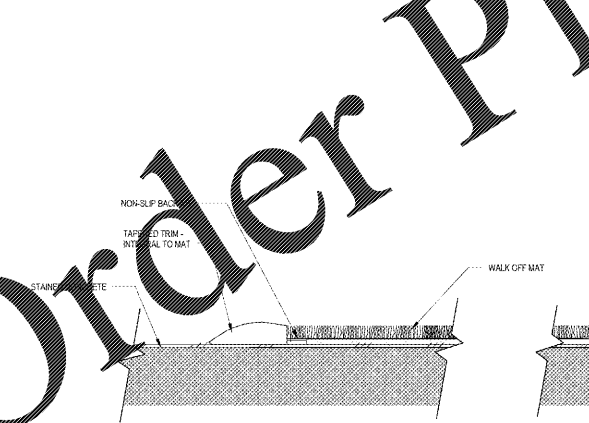
**DETAIL @ SHIPLAP WALL FINISH AND WOOD BASE**  
3/4" x 1'-0"



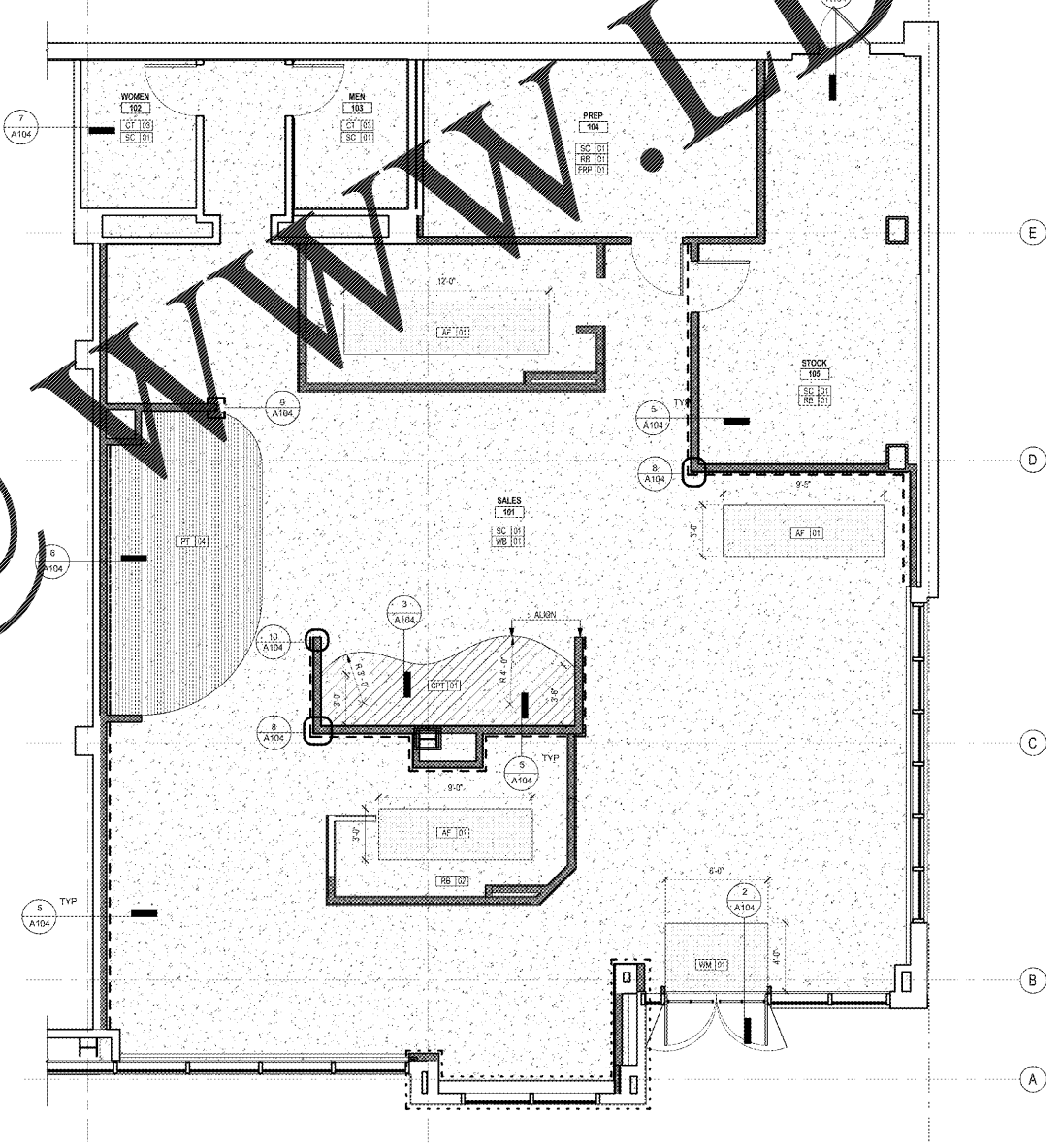
**DETAIL - TRANSITION AT CONCRETE & EXISTING REAR DOOR**  
6" x 1'-0"



**DETAIL - TRANSITION AT CARPET AND CONCRETE**  
6" x 1'-0"

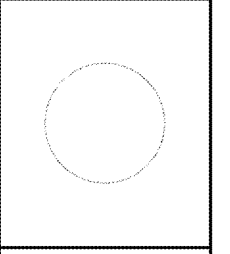


**DETAIL - TRANSITION AT ENTRY MAT & CONCRETE**  
6" x 1'-0"



**FLOOR & WALL FINISH PLAN**  
1/4" = 1'-0"

**Bergmeyer**  
ARCHITECTURAL AND INTERIOR DESIGN  
Bergmeyer Associates, Inc.  
1115 Peachtree Street, NE  
Atlanta, GA 30309  
Phone: 404.525.1000  
www.bergmeyer.com



RELEASED FOR CONSTRUCTION

MS	5/19/17	ISSUED FOR PERMIT/BD
MS	03/24/17	ISSUED FOR LL REVIEW
NO	1	DATE / DESCRIPTION

SAVANNAH BEE COMPANY



WESTSIDE PROVISIONS  
1100 HOWELL MILL RD SUITE A01  
ATLANTA, GA 30318

FINISH PLAN

DRAWN BY:	MS
REVIEWED BY:	JP
JOB NO:	10201 06

**A104**

**Order Plans @**

**WWW.LDLINE.COM**