

SYMBOL	TYPE	FIXTURE NAME	MOUNTING HEIGHT	COMMENTS
ES	EXIT SIGN	EXISTING SIGN	12'-0" AFF	SALES FLOOR
LS-1 (FF)	LED STRIP	IN FIXTURE	LENGTH PER FIXTURE IN PARENTHESIS, PROVIDED IN DISPLAY BY FIXTURE MANUFACTURER	
LS-1 (W)	LED STRIP	IN FIXTURE	LENGTH PER FIXTURE IN PARENTHESIS, PROVIDED IN DISPLAY BY FIXTURE MANUFACTURER	
PC-1	PENDANT	12'-0" AFF	SALES FLOOR	
PC-2A	DECORATIVE PENDANT	7'-0" AFF	HONEY BAR	
PC-2B	DECORATIVE PENDANT	7'-0" AFF	CASHWARP	
PC-3	DECORATIVE PENDANT	10'-0" AFF	MEAD BAR	
PC-4	SUSPENDED LINEAR LED	10'-0" AFF	STOCK ROOM	
PC-5	DECORATIVE PENDANT	7'-0" AFF	RESTROOM	
SW-01	SWITCH	7'-0" AFF	EXISTING SWITCH	
SW-02	SWITCH	7'-0" AFF	EXISTING SWITCH	
SW-03	SWITCH	7'-0" AFF	EXISTING SWITCH	
SW-04	SWITCH	7'-0" AFF	EXISTING SWITCH	
SW-05	SWITCH	7'-0" AFF	EXISTING SWITCH	
SW-06	SWITCH	7'-0" AFF	EXISTING SWITCH	
SW-07	SWITCH	7'-0" AFF	EXISTING SWITCH	
SW-08	SWITCH	7'-0" AFF	EXISTING SWITCH	
SW-09	SWITCH	7'-0" AFF	EXISTING SWITCH	
SW-10	SWITCH	7'-0" AFF	EXISTING SWITCH	
SW-11	SWITCH	7'-0" AFF	EXISTING SWITCH	
SW-12	SWITCH	7'-0" AFF	EXISTING SWITCH	
SW-13	SWITCH	7'-0" AFF	EXISTING SWITCH	
SW-14	SWITCH	7'-0" AFF	EXISTING SWITCH	
SW-15	SWITCH	7'-0" AFF	EXISTING SWITCH	
SW-16	SWITCH	7'-0" AFF	EXISTING SWITCH	
SW-17	SWITCH	7'-0" AFF	EXISTING SWITCH	
SW-18	SWITCH	7'-0" AFF	EXISTING SWITCH	
SW-19	SWITCH	7'-0" AFF	EXISTING SWITCH	
SW-20	SWITCH	7'-0" AFF	EXISTING SWITCH	
SW-21	SWITCH	7'-0" AFF	EXISTING SWITCH	
SW-22	SWITCH	7'-0" AFF	EXISTING SWITCH	
SW-23	SWITCH	7'-0" AFF	EXISTING SWITCH	
SW-24	SWITCH	7'-0" AFF	EXISTING SWITCH	
SW-25	SWITCH	7'-0" AFF	EXISTING SWITCH	
SW-26	SWITCH	7'-0" AFF	EXISTING SWITCH	
SW-27	SWITCH	7'-0" AFF	EXISTING SWITCH	
SW-28	SWITCH	7'-0" AFF	EXISTING SWITCH	
SW-29	SWITCH	7'-0" AFF	EXISTING SWITCH	
SW-30	SWITCH	7'-0" AFF	EXISTING SWITCH	
SW-31	SWITCH	7'-0" AFF	EXISTING SWITCH	
SW-32	SWITCH	7'-0" AFF	EXISTING SWITCH	
SW-33	SWITCH	7'-0" AFF	EXISTING SWITCH	
SW-34	SWITCH	7'-0" AFF	EXISTING SWITCH	
SW-35	SWITCH	7'-0" AFF	EXISTING SWITCH	
SW-36	SWITCH	7'-0" AFF	EXISTING SWITCH	
SW-37	SWITCH	7'-0" AFF	EXISTING SWITCH	
SW-38	SWITCH	7'-0" AFF	EXISTING SWITCH	
SW-39	SWITCH	7'-0" AFF	EXISTING SWITCH	
SW-40	SWITCH	7'-0" AFF	EXISTING SWITCH	
SW-41	SWITCH	7'-0" AFF	EXISTING SWITCH	
SW-42	SWITCH	7'-0" AFF	EXISTING SWITCH	
SW-43	SWITCH	7'-0" AFF	EXISTING SWITCH	
SW-44	SWITCH	7'-0" AFF	EXISTING SWITCH	
SW-45	SWITCH	7'-0" AFF	EXISTING SWITCH	
SW-46	SWITCH	7'-0" AFF	EXISTING SWITCH	
SW-47	SWITCH	7'-0" AFF	EXISTING SWITCH	
SW-48	SWITCH	7'-0" AFF	EXISTING SWITCH	
SW-49	SWITCH	7'-0" AFF	EXISTING SWITCH	
SW-50	SWITCH	7'-0" AFF	EXISTING SWITCH	
SW-51	SWITCH	7'-0" AFF	EXISTING SWITCH	
SW-52	SWITCH	7'-0" AFF	EXISTING SWITCH	
SW-53	SWITCH	7'-0" AFF	EXISTING SWITCH	
SW-54	SWITCH	7'-0" AFF	EXISTING SWITCH	
SW-55	SWITCH	7'-0" AFF	EXISTING SWITCH	
SW-56	SWITCH	7'-0" AFF	EXISTING SWITCH	
SW-57	SWITCH	7'-0" AFF	EXISTING SWITCH	
SW-58	SWITCH	7'-0" AFF	EXISTING SWITCH	
SW-59	SWITCH	7'-0" AFF	EXISTING SWITCH	
SW-60	SWITCH	7'-0" AFF	EXISTING SWITCH	
SW-61	SWITCH	7'-0" AFF	EXISTING SWITCH	
SW-62	SWITCH	7'-0" AFF	EXISTING SWITCH	
SW-63	SWITCH	7'-0" AFF	EXISTING SWITCH	
SW-64	SWITCH	7'-0" AFF	EXISTING SWITCH	
SW-65	SWITCH	7'-0" AFF	EXISTING SWITCH	
SW-66	SWITCH	7'-0" AFF	EXISTING SWITCH	
SW-67	SWITCH	7'-0" AFF	EXISTING SWITCH	
SW-68	SWITCH	7'-0" AFF	EXISTING SWITCH	
SW-69	SWITCH	7'-0" AFF	EXISTING SWITCH	
SW-70	SWITCH	7'-0" AFF	EXISTING SWITCH	
SW-71	SWITCH	7'-0" AFF	EXISTING SWITCH	
SW-72	SWITCH	7'-0" AFF	EXISTING SWITCH	
SW-73	SWITCH	7'-0" AFF	EXISTING SWITCH	
SW-74	SWITCH	7'-0" AFF	EXISTING SWITCH	
SW-75	SWITCH	7'-0" AFF	EXISTING SWITCH	
SW-76	SWITCH	7'-0" AFF	EXISTING SWITCH	
SW-77	SWITCH	7'-0" AFF	EXISTING SWITCH	
SW-78	SWITCH	7'-0" AFF	EXISTING SWITCH	
SW-79	SWITCH	7'-0" AFF	EXISTING SWITCH	
SW-80	SWITCH	7'-0" AFF	EXISTING SWITCH	
SW-81	SWITCH	7'-0" AFF	EXISTING SWITCH	
SW-82	SWITCH	7'-0" AFF	EXISTING SWITCH	
SW-83	SWITCH	7'-0" AFF	EXISTING SWITCH	
SW-84	SWITCH	7'-0" AFF	EXISTING SWITCH	
SW-85	SWITCH	7'-0" AFF	EXISTING SWITCH	
SW-86	SWITCH	7'-0" AFF	EXISTING SWITCH	
SW-87	SWITCH	7'-0" AFF	EXISTING SWITCH	
SW-88	SWITCH	7'-0" AFF	EXISTING SWITCH	
SW-89	SWITCH	7'-0" AFF	EXISTING SWITCH	
SW-90	SWITCH	7'-0" AFF	EXISTING SWITCH	
SW-91	SWITCH	7'-0" AFF	EXISTING SWITCH	
SW-92	SWITCH	7'-0" AFF	EXISTING SWITCH	
SW-93	SWITCH	7'-0" AFF	EXISTING SWITCH	
SW-94	SWITCH	7'-0" AFF	EXISTING SWITCH	
SW-95	SWITCH	7'-0" AFF	EXISTING SWITCH	
SW-96	SWITCH	7'-0" AFF	EXISTING SWITCH	
SW-97	SWITCH	7'-0" AFF	EXISTING SWITCH	
SW-98	SWITCH	7'-0" AFF	EXISTING SWITCH	
SW-99	SWITCH	7'-0" AFF	EXISTING SWITCH	
SW-100	SWITCH	7'-0" AFF	EXISTING SWITCH	

- REFLECTED CEILING PLAN NOTES**
- SEE MEP-PP DRAWINGS FOR LIGHT FIXTURE SCHEDULE, E.C. TO COORDINATE WITH ARCHITECT'S CEILING PLAN, NOTIFY ARCHITECT AND ENGINEER OF DISCREPANCIES.
 - SEE MEP-PP DRAWINGS FOR QUANTITY AND SPECIFICATION OF SPRINKLER, HVAC AND LIFE SAFETY SYSTEMS. GC TO PROVIDE COORDINATED SHOP DRAWINGS FOR ABOVE CEILING SYSTEMS TO ARCHITECT FOR REVIEW AND APPROVAL.
 - CONFIRM LOCATION OF EXIT SIGNS, HORNSTROES AND SMOKE DETECTORS PRIOR TO LAYOUT REFER TO ELEVATIONS FOR WALL MOUNTED DEVICES.
 - REFER TO MEP-PP DRAWINGS FOR EMERGENCY LIGHTING AND NIGHT LIGHTS.
 - CONSULT ARCHITECT FOR DIRECTION WITH CONFLICT BETWEEN STRUCTURE, MECHANICAL EQUIPMENT, SPRINKLERS, LIGHTING, ETC. DIMENSIONS TO FINISH FACE OF CEILING U.O.C.
 - AV SYSTEM LAYOUT IS DIAGRAMATIC. VERIFY SYSTEM EXTENT AND EQUIPMENT QUANTITIES WITH OWNERS VENDOR.
 - PAINT GWB COULDS AS NOTED ON GCP.
 - WHERE LOCATED IN ACT, RESISTERS AND LIGHTING FIXTURES TO BE WITHIN GRID LINES, CENTER SPRINKLER HEADS, SPEAKERS, RECESSED FIXTURES AND SIMILAR CEILING ELEMENTS WITHIN 2" OF CEILING MODULE U.O.N.
 - COORDINATE GRID START POINTS WITH ARCHITECT'S GRID AND CLOSED ROOMS U.O.N. AVOID LESS THAN 10" WHERE POSSIBLE.
 - COORDINATE ACCESS PANEL LOCATIONS WITH ARCHITECT PRIOR TO INSTALLATION.
 - FINISH OF HVAC DIFFUSERS TO MATCH ADJACENT FINISH.
 - SECURITY CAMERAS AND ALARM PANEL BY OWNERS VENDOR, GC TO COORDINATE INSTALLATION.
 - SPEAKERS BY OWNERS VENDOR, GC TO COORDINATE.
 - REFER TO ARCHITECT'S DRAWINGS FOR COORDINATION.

Bergmeyer

ARCHITECTURAL AND INTERIOR DESIGN
Bergmeyer Associates, Inc.
1000 Peachtree Street, N.E.
Atlanta, GA 30309
Phone: 404.525.1234
www.bergmeyer.com

- REFLECTED CEILING PLAN LEGEND**
- 24" X 24" ACT SUSPENDED CEILING SYSTEM
 - GWB
 - 24" X 24" SUPPLY DIFFUSER
 - 24" X 24" SUPPLY DIFFUSER
 - EXIT SIGN - PENDANT MOUNTED
 - EXIT SIGN - WALL MOUNTED
 - SPRINKLER - NEW CONCEALED IN GWB
 - SPRINKLER - NEW UPRIGHT IN OPEN CEILING
 - SPRINKLER - NEW SEMI-RECESSED PENDANT
 - SPEAKER
 - EXHAUST FAN
 - CEILING MOUNTED RECEPTACLE
 - FIRE ALARM
 - STROBE
 - WAP

- REFLECTED CEILING PLAN KEYNOTES**
- LAYOUT STARTING POINT FOR ACT.
 - DISPLAY WINDOW MARKETING GRID. SEE DEVICE & EQUIPMENT SCHEDULE U.O. GRID MOUNTED @ 10'-0" AFF.
 - EXPOSED DUCTWORK TO BE PAINTED PF-02
 - NEW SCANCES IN EXISTING LOCATION
 - SEE EXTERIOR ELEVATIONS FOR INFORMATION ON LIGHT FIXTURE

RELEASED FOR CONSTRUCTION

MS 541917 ISSUED FOR PERMIT/ID
MS 032417 ISSUED FOR LL REVIEW
NO. 1: BFF DATE DESCRIPTION

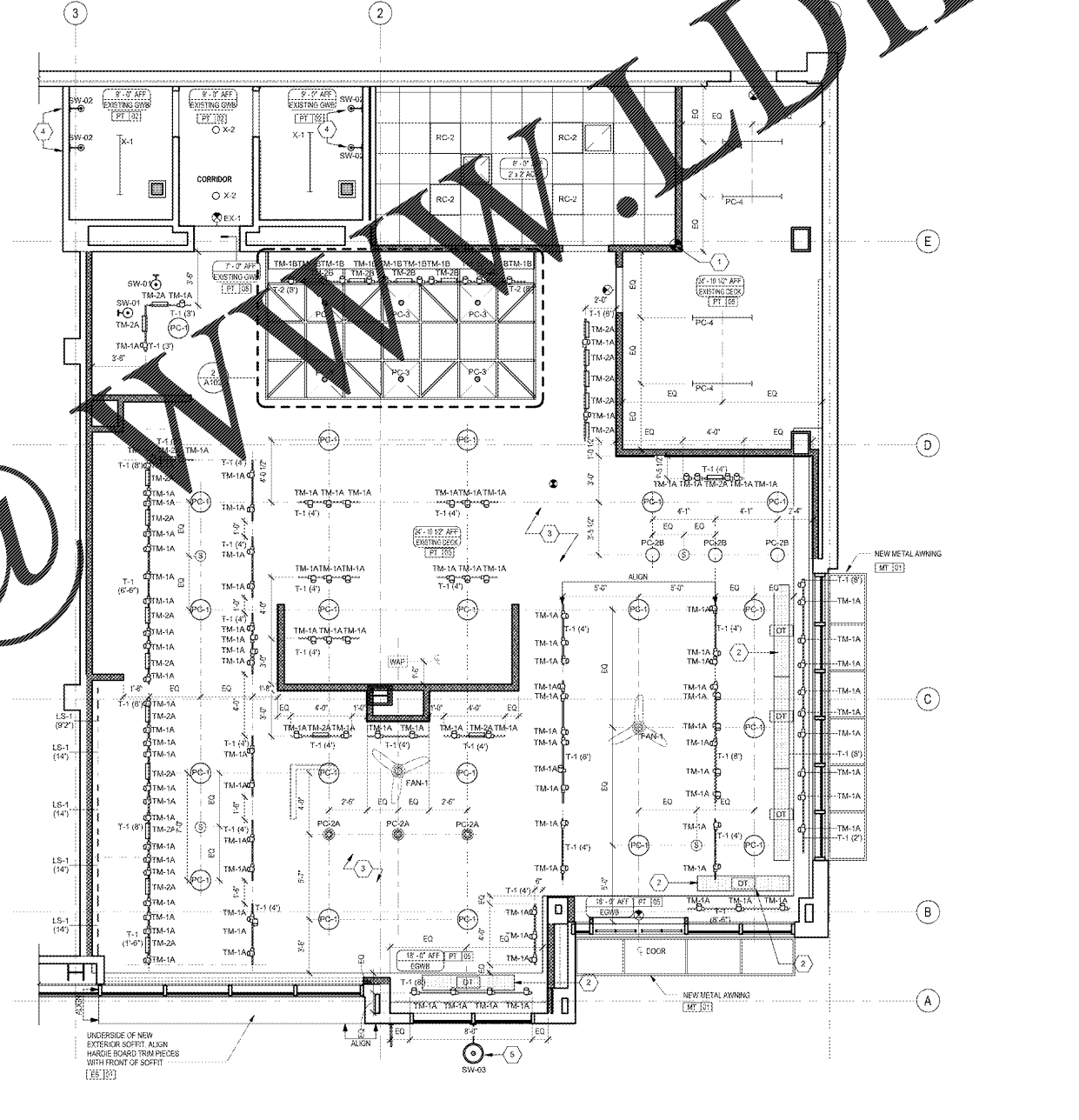
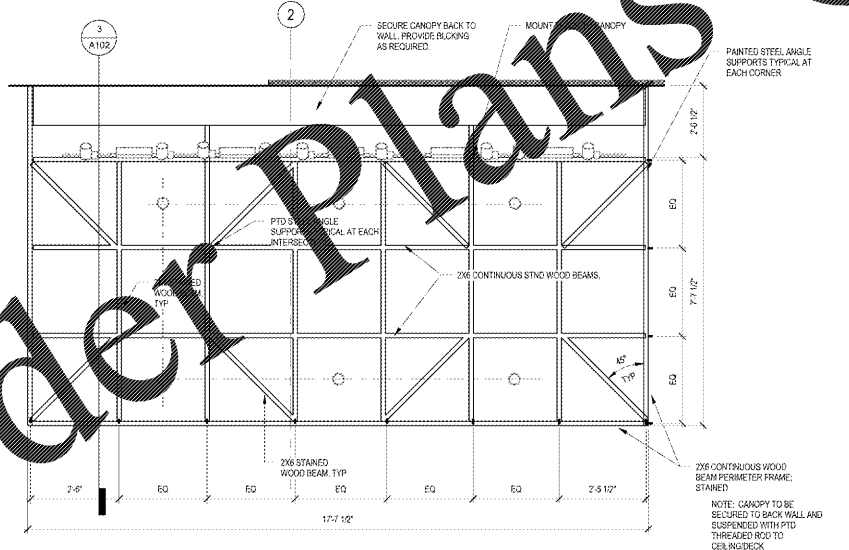
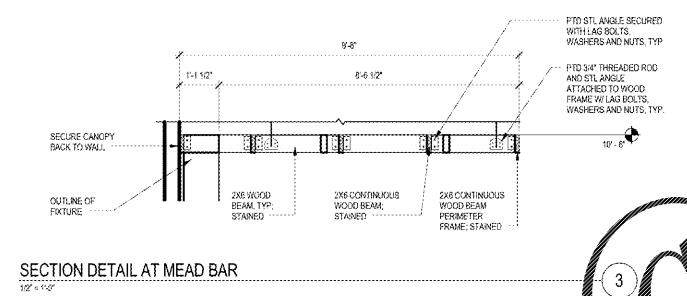
SAVANNAH BEE COMPANY

WESTSIDE PROVISIONS
1100 HOWELL MILL RD SUITE A01
ATLANTA, GA 30318

REFLECTED CEILING PLAN

DRAWN BY: MS
REVIEWED BY: JP
JOB NO: 10201 06

A102



Order Plans

4/19/2017 12:01:41
C:\Users\msherman\Documents\BEE\ATLANTA WESTSIDE - CENTRAL - preliminary