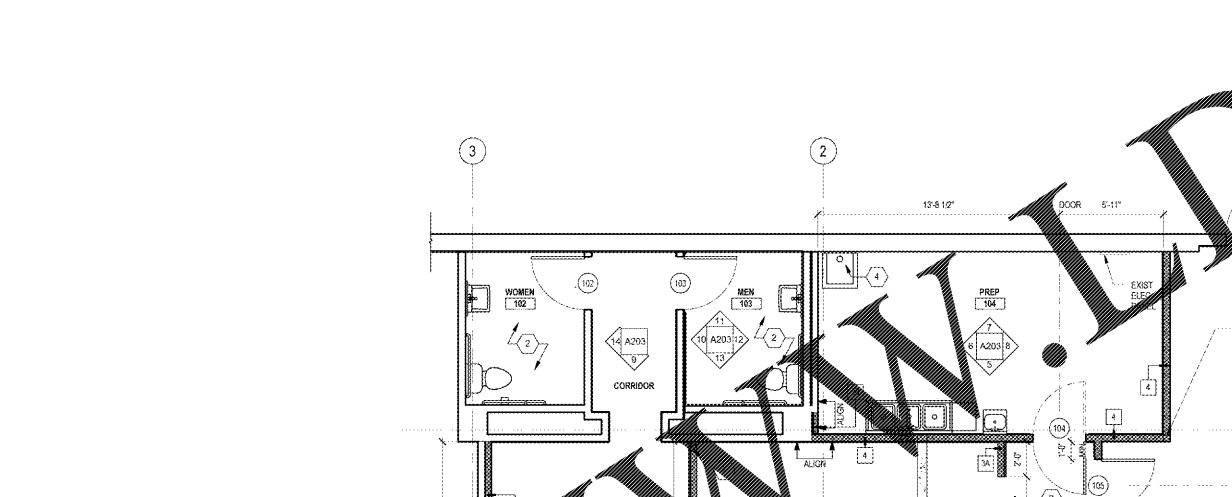
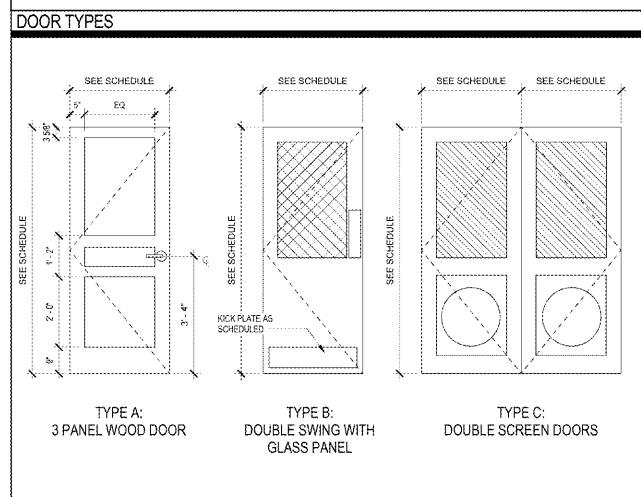


PARTITION TYPE NOTES	
1.	GWB TO BE CUT TO FIT TIGHT AROUND PENETRATIONS SUCH AS PIPES, DUCTS, CONDUIT, CABLES, ETC. PENETRATIONS OF FIRE RATED PARTITIONS SHALL BE SEALED WITH FIRESTOP SEALANT. OTHER PENETRATIONS TO BE SEALED WITH ACoustICAL SEALANT.
2.	PARTITIONS CONTAINING SOUND ATTENUATION BLANKETS, THERMAL INSULATION OR FIRESTOPPING INSULATION SHALL BE SEALED ON SIDES, TOP AND BOTTOM AS DESIGNATED BY PARTITION TYPE.
3.	WATER RESISTANT GWB SHALL BE USED IN ROOMS THAT ARE EXPOSED TO MOISTURE SUCH AS TOILET ROOMS, KITCHENS AND CUSTODIAL ROOMS.
4.	EXTERIOR WALL FRAMING, INSULATION AND WALL BARRIERS TO RAIN/FULL HEIGHT TIGHT TO UNDERSIDE OF STRUCTURE AT EXTERIOR WALLS.
5.	PARTITIONS THAT TERMINATE ABOVE THE CEILING AND DO NOT EXTEND TO THE STRUCTURE ABOVE SHALL HAVE DIAGONAL BRACING.
6.	REVIEW DRAWINGS, PROVIDE BRACING AND BLOCKING IN PARTITIONS AS REQUIRED. BLOCKING SHALL BE FIRE RETARDANT TREATED (FRT).
7.	FIRE RATED ASSEMBLIES SHALL BE CONSTRUCTED IN ACCORDANCE WITH THE APPROPRIATE U.L. DESIGN NUMBER INDICATED FOR THAT PARTITION TYPE.
8.	COLUMNS AND BEAMS SUPPORTING RATED CONSTRUCTION SHALL BE RATED TO MATCH THE CONSTRUCTION BEING SUPPORTED.
9.	STEEL BRACING WITHIN PARTITIONS SHALL BE SPRAY FIREPROOFED.
10.	PARTITIONS AT RESTROOMS UNDER BUT NOT LIMITED TO, CERAMIC TILE OR ACRYLIC PANELS SHALL BE CEMENTITIOUS BACKER BOARD. PROVIDE CEMENTITIOUS BACKER BONDING AT MET WALLS.

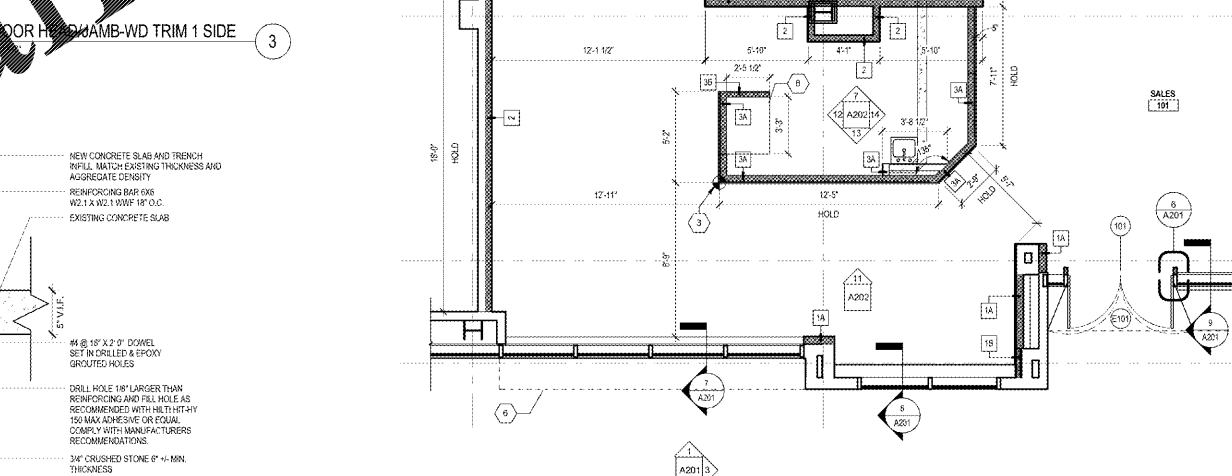
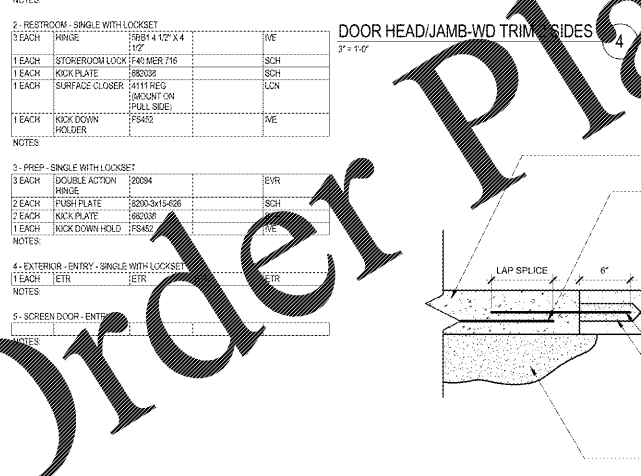


CONSTRUCTION NOTES	
1.	GO TO SHEET A101 FOR ADDITIONAL NOTES AND REQUIREMENTS.
2.	SEE RESPONSIBILITY SCHEDULE FOR DIVISION OF LABOR.
3.	WORK SHALL COMPLY WITH FEDERAL, STATE AND LOCAL BUILDING CODES AND REGULATIONS.
4.	GC IS RESPONSIBLE FOR MAINTAINING THE FIRE RATING INTEGRITY AT DEMOS AND FIRE RATED WALLS AS WELL AS AT THE SLAB.
5.	CONTRACTORS SHALL FIELD VERIFY CONDITIONS AND DIMENSIONS THAT IMPACT WORK PRIOR TO START OF CONSTRUCTION.
6.	CONFLICTS BETWEEN SITE CONDITIONS AND DRAWINGS SHALL BE BROUGHT TO THE IMMEDIATE ATTENTION OF THE ARCHITECT/DESIGNER.
7.	DIMENSIONS ARE TO BE TO FINISHED FACE OF WALL U.O.N. APPLIED MATERIALS ARE TO BE APPLIED AFTER THE TRIM/DRAWINGS HAVE BEEN CONFIRMED.
8.	LAUNCH PARTITIONS STARTING FROM CONDITIONS WHERE ALIGNMENT WITH EXISTING CONDITIONS IS SIGNIFICANT.
9.	DRAWINGS ARE NOT TO BE SCALED. VERIFY ANY MISSING OR CONFLICTING WRITTEN DIMENSIONS WITH THE ARCHITECT/DESIGNER PRIOR TO CONSTRUCTION.
10.	GC TO NOTIFY ARCHITECT AFTER LAYOUT AND PRIOR TO FRAMING IF DIMENSION LABELED WITH DIMENSION MORE THAN 2" FROM ACTUAL FIELD MEASUREMENT.
11.	GC TO NOTIFY ARCHITECT AFTER LAYOUT AND PRIOR TO FRAMING IF A DOOR IS REFRACTORY, OMISSION OR UNREPRESENTED FIELD CONDITIONS ALTERS THE INTENT OF THESE DRAWINGS.
12.	NOTIFY ARCHITECT OF CONDITIONS WHERE CLEAR OR CRITICAL DIMENSIONS ARE DESIGNATED BUT CANNOT BE MET OR WHERE CONDOORABLE WIDTH CANNOT MEET THE MINIMUM REQUIREMENT (3'-0" U.O.N.).
13.	MAIN FLOOR FINISH FLOOR BASE ELEVATIONS GO TO SCHEDULE DELIVERY. INSTALLATION DATES AT THE BEGINNING OF THE JOB TO GUARANTEE COMPLIANCE WITH CONSTRUCTION SCHEDULE.
14.	REFER TO SHEET A-01 FOR DOOR AND HARDWARE SCHEDULE.
15.	DOORS TO BE 6" FROM NEAREST PERPENDICULAR PARTITION U.O.N.
16.	BLOCKING TO BE FIRE RETARDANT. SEE ELEVATIONS AND DETAIL FOR LOCATIONS OF BLOCKING. COORDINATE WITH FUTURE CONTRACTOR FOR FUTURE BLOCKING REQUIREMENTS.
17.	GC IS RESPONSIBLE FOR THE INSTALLATION OF FRT PLYWOOD BACKING ON WALLS FOR THE MOUNTING OF EQUIPMENT (E-TELECOM PANELS). REFER TO CONSTRUCTION PLAN AND ENGINEERING DRAWINGS FOR LOCATIONS OF EQUIPMENT.
18.	ALIGN CENTER LINES OF FIRE EXTINGUISHER CABINETS AND VEP-PP DEVICES ON WALLS IN THE SAME LOCATION.
19.	PROVIDE FIRE EXTINGUISHERS (WITH CABINETS) IN QUANTITIES AND LOCATIONS AS REQUIRED BY CODE U.O.N. ON DRAWINGS. LOCATE 1 FHR 6.000 SF - 75 FT MAX TRAVEL DISTANCE. REVIEW FIRM LOCATIONS WITH THE ARCHITECT/DESIGNER PRIOR TO START OF CONSTRUCTION. PARTITION DEPTHS AT FIRE EXTINGUISHER LOCATIONS TO ACCOMMODATE FULL CONCEALMENT OF RECESSED CABINETS U.O.N.
20.	WHERE NEW PARTITIONS ADJACENT TO EXISTING SURFACES, REMOVE EXISTING CORNER BEAD AND PROVIDE SMOOTH FINISH AT INTERSECTION.
21.	PATCH AND REPAIR HOLES & PENETRATIONS AT EXISTING GWB.
22.	ANGLE BUSH TO BE 4" MINIMUM AT PARTITIONS AND SYSTEM FURNITURE. FURNITURE INSTALLER TO NOTIFY ARCHITECT IF LESS PRIOR TO CONSTRUCTION.
23.	REPLACE MISSING OR DAMAGED FIREPROOFING.

DOOR AND FRAME SCHEDULE														
NO.	ROOM NAME	WIDTH	DOOR SIZE	THICKNESS	TYPE	MAT.	FINISH	DETAILS	FRAME	THRESH.	GLAZ.	SET	FIN.	REMARKS
101	SALLES - SCREEN DOOR	3'-0"	3'-0"	1 1/2"	IC	WD	WD	4	1	MT	NA	NA	2	NEW SCREEN DOOR
102	RESTROOM	3'-0"	7'-0"	1 1/2"	A	WD	REFER TO ELEVATIONS	4	1	MT	NA	NA	2	NEW DOOR - IN EXISTING OPENING
103	RESTROOM	3'-0"	7'-0"	1 1/2"	A	WD	REFER TO ELEVATIONS	4	1	MT	NA	NA	2	NEW DOOR - IN EXISTING OPENING
104	PREP	3'-0"	7'-0"	1 1/2"	B	WD	REFER TO ELEVATIONS	3	2	MT	NA	NA	3	NEW DOOR
105	STOCK	3'-0"	7'-0"	1 1/2"	A	WD	REFER TO ELEVATIONS	3	1	MT	NA	NA	3	NEW DOOR
E101	EXTERIOR - FRONT	6'-0"	9'-1 1/2"	1 1/2"	ETR	ETR	REFER TO ELEVATIONS	ETR	ETR	ETR	NA	NA	4	EXISTING DOOR TO REMAIN, ADD MITO MOUNT TO EXISTING DOOR
E105	EXTERIOR - BACK	3'-0"	7'-0"	1 1/2"	ETR	ETR	REFER TO ELEVATIONS	ETR	ETR	ETR	NA	NA	4	EXISTING DOOR TO REMAIN

DOOR HARDWARE SCHEDULE				
QUANTITY	DESCRIPTION	MODEL NUMBER	COLOR	MANUFACTURER
1	STOCK - SINGLE			
3	EACH HINGE	5891 4 1/2" X 4 1/2"	US1194SE	IVE
1	EACH DEAD BOLT	599 7/16	US1194SE	SCB
1	EACH DOOR STOP	FS438	US1194SE	IVE
1	EACH SILENCER	5894	GRY	IVE
1	EACH PUSH PLATE	2000-3515-626	US1194SE	SCB
1	EACH KICK PLATE	3811-3515-626	US1194SE	SCB
1	EACH KICK DOWN HOLD	386-716	US1194SE	SCB
1	EACH SURFACE CLOSER	54111 REG	US1194SE	IVE
1	EACH KICK DOWN HOLD (MOUNT ON WALL SIDE)	FS452	US1194SE	IVE

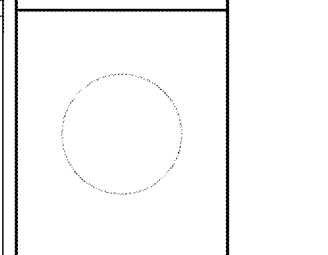
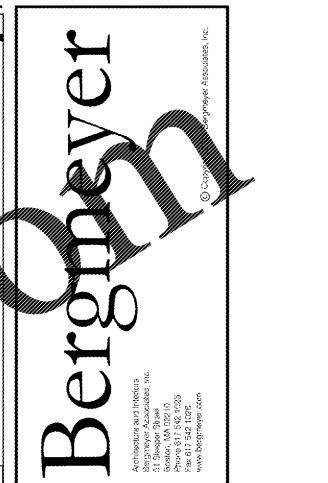
FRAMING NOTES	
1.	ALL NON-CAD-BEARING METAL WALL FRAMING SHALL BE 25 GAUGE, UNLESS OTHERWISE NOTED BELOW. REFER TO SPECIFICATION SECTION 0520 U.G. GYPSUM BOARD ASSEMBLIES.
2.	PROVIDE 20 GAUGE METAL WALL FRAMING IN LIEU OF 25 GAUGE METAL FRAMED WALLS WITH ONE LAYER OF 5/8" GYPSUM BOARD ON EACH SIDE WHICH EXCEEDS THE HEIGHT LIMITS AS LISTED BELOW:
	2 1/2" METAL STUDS: 10'-0"
	3 1/2" METAL STUDS: 14'-0"
	4" METAL STUDS: 15'-0"
	6" METAL STUDS: 20'-0"
3.	ADDITIONALLY PROVIDE 20 GAUGE METAL WALL FRAMING AT THE FOLLOWING LOCATIONS, UNLESS NOTED OTHERWISE:
	DOUBLE STUD JAMB ASSEMBLIES
	FIRST STUD IN THE PARTITION BEYOND THE DOUBLE STUD JAMB ASSEMBLY. LOCATE STUD 6" FROM DOUBLE STUD ASSEMBLY.
	STUDS TO WHICH WALL MOUNTED EQUIPMENT, INCLUDING OWNER FURNISHED EQUIPMENT, IS FASTENED TO.
	STUDS INSTALLED FOR OPENING HEADS BETWEEN DOUBLE STUD JAMB ASSEMBLIES.
4.	PROVIDE 20 GAUGE METAL WALL FRAMING IN LIEU OF 25 GAUGE METAL FRAMED WALLS WITH TWO LAYERS OF 5/8" GYPSUM BOARD ON EACH SIDE THAT EXCEEDS THE HEIGHT LIMITS AS LISTED BELOW:
	4" METAL STUDS: 15'-0"
	6" METAL STUDS: 20'-0"



CONSTRUCTION PLAN KEY NOTES	
1.	ALIGN PARTITION WITH EXISTING WALL
2.	EXISTING RESTROOM AND FIXTURES TO REMAIN. COSMETIC UPDATES ONLY.
3.	STARTING POINT FOR BAR LAYOUT
4.	REFER TO PLUMBING DRAWINGS FOR SINKS
5.	NEW FINISH ABOVE
6.	LINE OF NEW EXTERIOR SOFFIT
7.	PROVIDE POSTS FOR BAR TOP SUPPORT. REFER TO BAR SECTIONS ON SHEET A101
8.	PROVIDE WOOD FRAMED PLATFORM TO RAISE 90" AFF TO ALIGN WITH COUNTER HEIGHT

TYP. EXISTING TO NEW CONCRETE SLAB ON GRADE DETAIL
1 1/2" x 1 1/2"

CONSTRUCTION PLAN
1/4" = 1'-0"



RELEASED FOR CONSTRUCTION

SAVANNAH BEE COMPANY

WESTSIDE PROVISIONS
1100 HOWELL MILL RD SUITE A01
ATLANTA, GA 30318

CONSTRUCTION PLAN, PARTITION TYPES, DOOR & FRAME SCHEDULE AND DETAILS

DRAWN BY: MS
REVIEWED BY: JP
JOB NO: 10201 06

A101