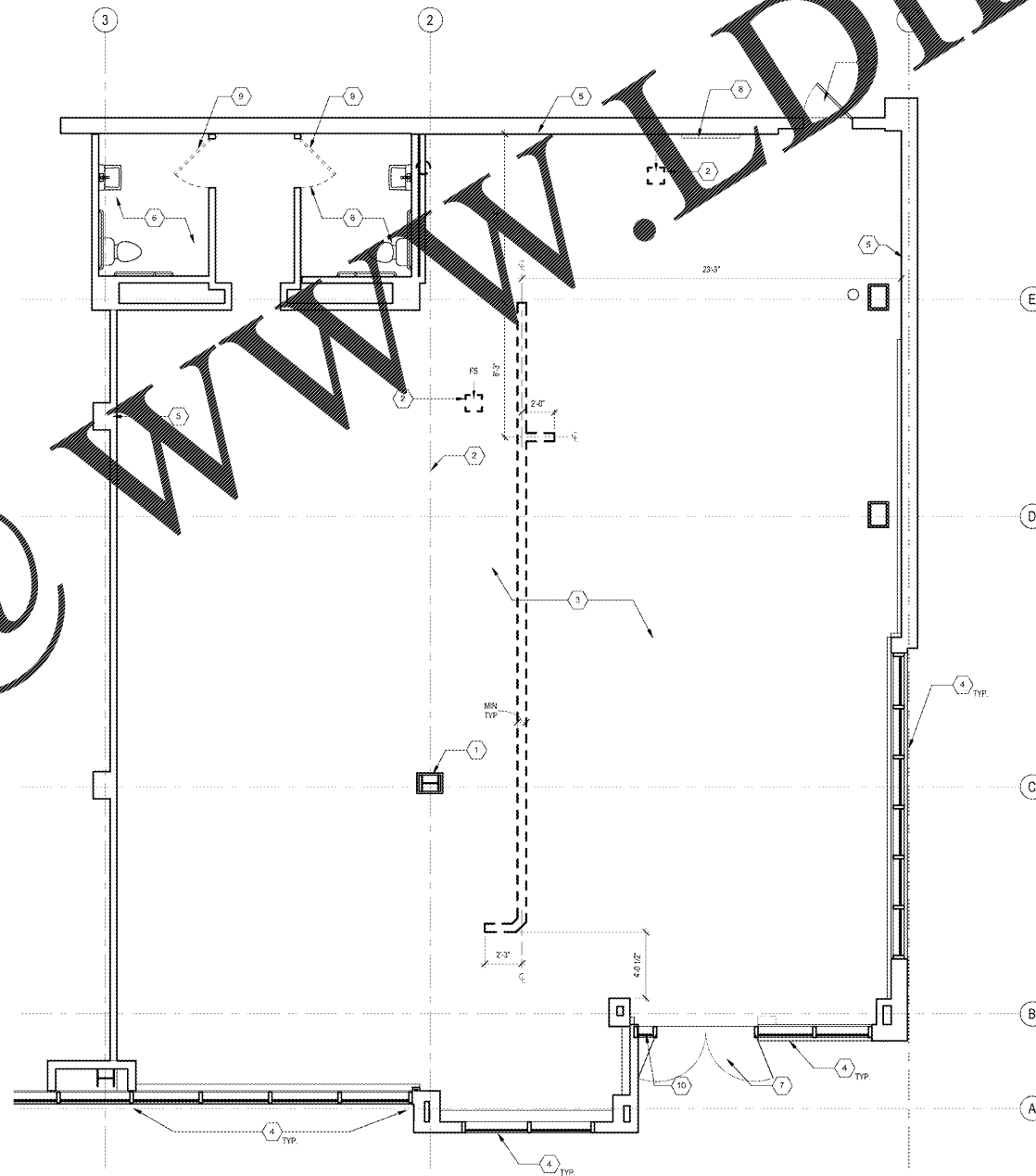


Order Plans @



**DEMOLITION PLAN LEGEND**

- EXISTING PARTITION TO REMAIN
- EXISTING PARTITION TO BE REMOVED
- NOT IN CONTRACT (NIC)
- EXISTING DOOR TO REMAIN
- EXISTING DOOR TO BE REMOVED

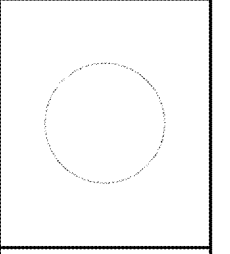
**DEMOLITION PLAN NOTES**

- EXISTING PARTITIONS TO BE REMOVED U.G.N. REFER TO EXISTING PARTITION DRAWINGS FOR APPROXIMATE EXISTING CONDITIONS. (V.I.F.) CONTRACTOR SHALL VERIFY LIMIT OF DEMOLITION IN THE FIELD, AND SHALL COORDINATE WORK WITH BUILDING MANAGEMENT.
- CONTRACTOR SHALL ADHERE TO LANDLORD/BUILDING MANAGEMENT POLICIES OF OPERATION IN PERFORMING WORK UNDER THIS CONTRACT.
- COORDINATE DEMOLITION WORK WITH EXISTING ELECTRICAL, PLUMBING, AND MECHANICAL SYSTEMS. REFER TO MEP DRAWINGS FOR DETAILS.
- REMOVE MECHANICAL, ELECTRICAL, PLUMBING, COMMUNICATION SYSTEMS AND COMPONENTS TO BE DISABLED OR TO BE REPLACED BY NEW COMPONENTS. REFER TO MEP DRAWINGS FOR ADDITIONAL WORK.
- CONTRACTOR SHALL REMOVE DEBRIS FROM SITE IN AN APPROVED MANNER, AND SHALL BE RESPONSIBLE FOR THE EXISTING EQUIPMENT TO REMAIN.
- REFER TO EXISTING DRAWINGS FOR THE EXISTING EQUIPMENT TO REMAIN.
- REMOVE FINISHED CEILING, MISC. BEAMS, STEEL HANGERS & SUPPORT THROUGHOUT SPACE, INCLUDING ABOVE CEILING.
- REMOVE ALL FIRE PROTECTIVE DEVICES, CONTROLS, ETC. THAT ARE TO BE DISCONNECTED AND PROTECTIVE FIREPROOFING. REPLACE MISSING OR DAMAGED DEVICES.
- ITEMS TO BE REMOVED AS DESIGNATED ON DRAWINGS:
  - A. GIBS
  - B. GIBS AND ACOUSTICAL CEILING INCLUDING TILE, GRID AND HANGERS.
  - C. LIGHTS
  - D. POWER & DATA, INCLUDING FLOOR-MOUNTED BOXES.
  - E. MILLWORK
  - F. FLOORING
  - G. FLOORING
  - H. WINDOW TREATMENTS
- ITEMS TO REMAIN:
  - A. GIBS & COLUMNS AS INDICATED
  - B. REFER TO TOILET ROOM SHEETS AND MEP DRAWINGS FOR FULL SCOPE OF DEMOLITION IN TOILET ROOMS.
  - C. RADIATORS
  - D. RAMPS

**DEMOLITION PLAN KEY NOTES**

- REMOVE EXCESS GIBS AT COLUMN. MAINTAIN FIRE RATING.
- TRENCH EXISTING CONCRETE TO BRING POWER AND PLUMBING TO FIXTURES. COORDINATE TRENCH LOCATION WITH EXISTING UTILITIES BELOW SLAB. COORDINATE WITH PLUMBING AND ELECTRICAL DRAWINGS AND LANDLORD.
- REMOVE EXISTING LIGHT FIXTURES AND ASSOCIATED COMPONENTS.
- BLACKOUT WINDOWS WITH KRAFT PAPER OR FILM PER LANDLORD'S TENANT CRITERIA DURING CONSTRUCTION.
- EXISTING DEMISING WALL BY LANDLORD. GC TO MAINTAIN FIRE RATING.
- EXISTING RESTROOM AND PLUMBING FIXTURES TO REMAIN. REMOVE ACCESSORIES AS FOLLOWS: MIRROR, SCISSOR, SOAP DISPENSERS, TP DISPENSERS, PAPER TOWEL DISPENSERS.
- EXISTING DOOR TO REMAIN.
- EXISTING ELECTRICAL PANEL TO BE REMOVED.
- EXISTING DOOR TO BE REMOVED. DOOR FRAME TO REMAIN.
- REMOVE EXISTING WINDOW FILM WHERE OCCURS.

**Bergmeyer**  
 Bergmeyer Associates, Inc.  
 1100 HOWELL MILL RD SUITE A01  
 ATLANTA, GA 30318  
 Phone: 404.525.1200  
 Fax: 404.525.1202  
 www.bergmeyer.com



**RELEASED FOR CONSTRUCTION**

NO.	REV.	DATE	DESCRIPTION
MS	041917		ISSUED FOR PERMIT/ID
MS	032417		ISSUED FOR LL REVIEW
MS	011717		ISSUED FOR LL REVIEW

SAVANNAH BEE COMPANY

WESTSIDE PROVISIONS  
 1100 HOWELL MILL RD SUITE A01  
 ATLANTA, GA 30318

**DEMOLITION PLAN**

DRAWN BY: MS  
 REVIEWED BY: JP  
 JOB NO: 1021 06

**AD101**

DEMOLITION PLAN  
 1/4" = 1'-0"