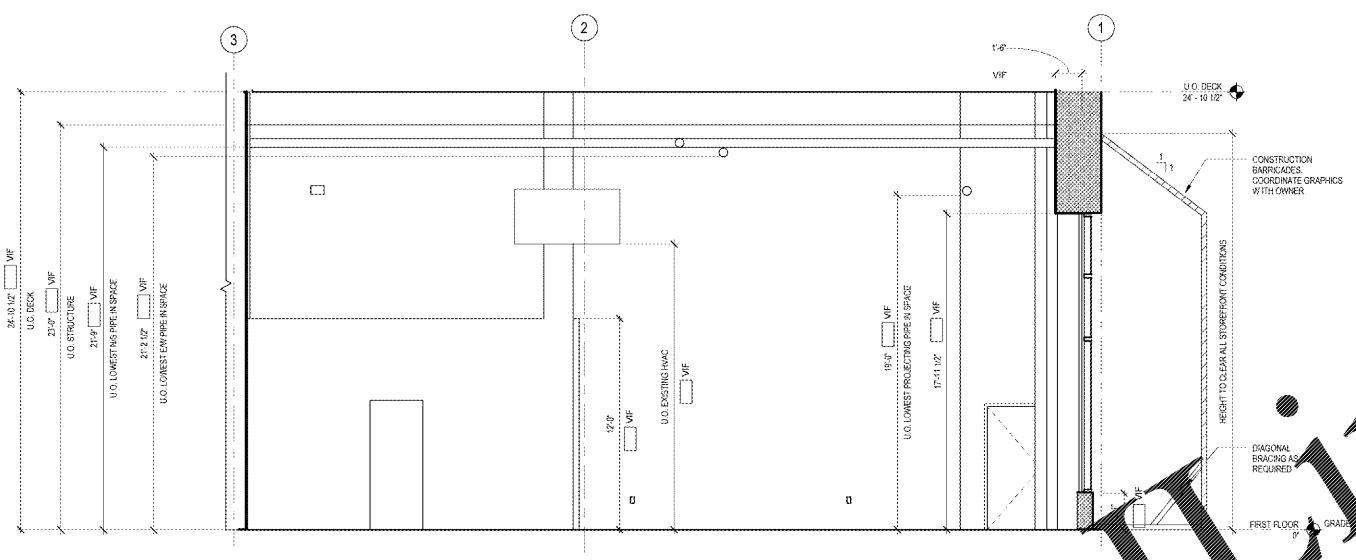
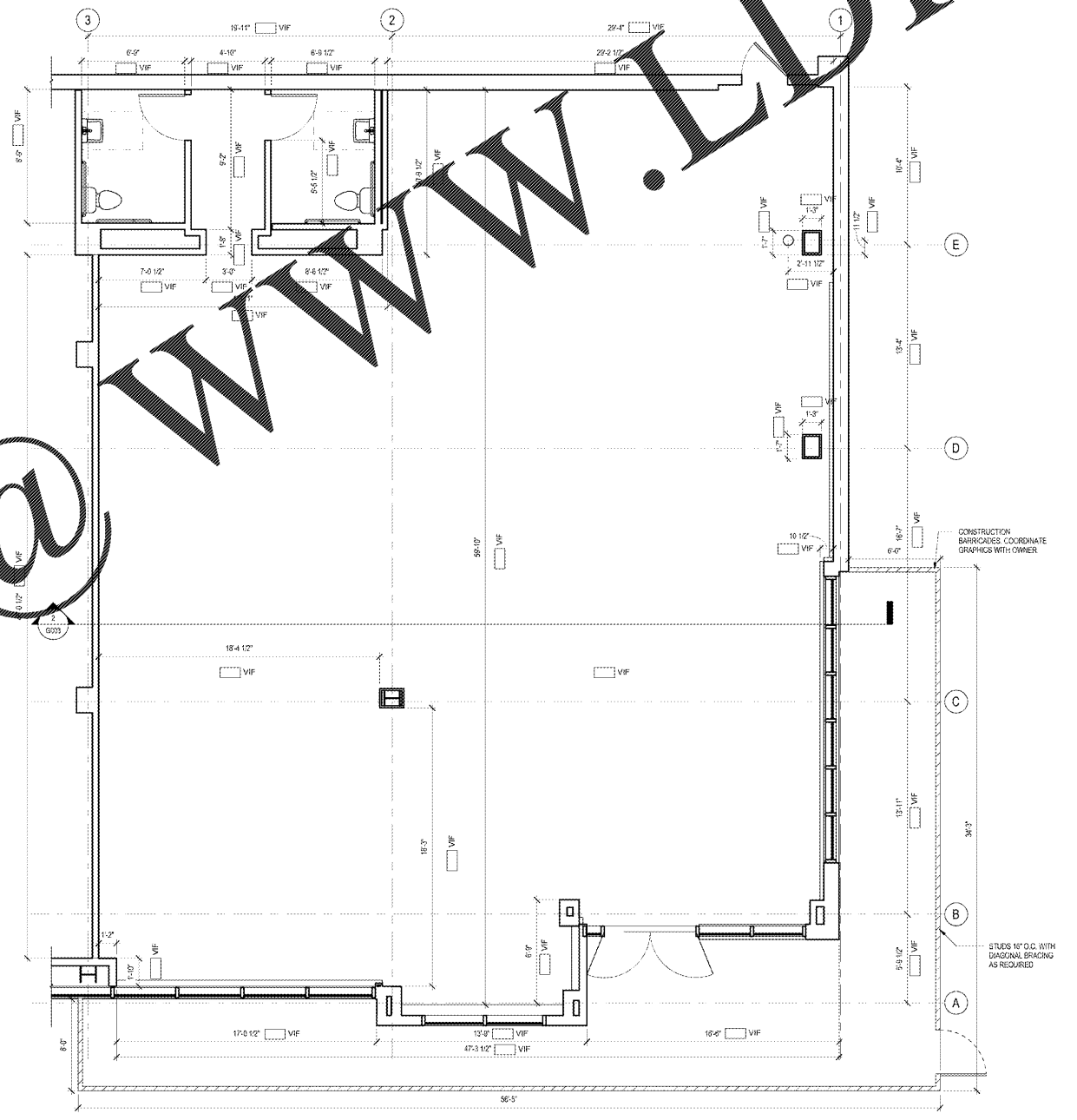


LEASE CONFIRMATION NOTES

- BEFORE STARTING CONSTRUCTION THE GC IS TO VERIFY THE INFORMATION REQUESTED ON THIS DRAWING. UPON COMPLETION OF THE LEASE CONFIRMATION DRAWING THE GC IS TO SUBMIT ONE COPY TO THE ARCHITECT. IF THERE ARE ANY SIGNIFICANT DISCREPANCIES BETWEEN THIS FIELD VERIFICATION AND THE DRAWINGS, THE GENERAL CONTRACTOR IS TO NOTIFY THE ARCHITECT IMMEDIATELY. FURTHERMORE, IF THERE ARE ANY ITEMS THAT CONFLICT WITH THE SCOPE OF THIS PROJECT THAT DO NOT APPEAR ON THIS LEASE CONFIRMATION DRAWING, IT WILL BE THE RESPONSIBILITY OF THE CONTRACTOR TO NOTIFY AND COORDINATE WITH THE ARCHITECT. G.C. TO VERIFY LOCATION OF ALL DOORS SHOWN ON FLOOR PLAN. G.C. TO VERIFY ALL EXISTING HARDWARE IS IN GOOD CONDITION & NOTIFY ARCHITECT WHERE DISCREPANCIES OCCUR.
-

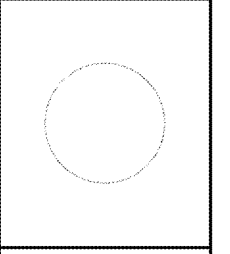


LEASE CONFIRMATION SECTION
1/4" = 1'-0"



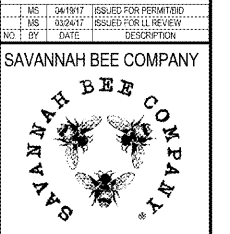
LEASE CONFIRMATION PLAN
1/4" = 1'-0"

Bergmeyer
Architectural and Interior Design
Bergmeyer Associates, Inc.
1000 Peachtree Street, N.E.
Atlanta, GA 30309
Phone: 404.525.1234
www.bergmeyer.com



RELEASED FOR CONSTRUCTION

NO.	REV.	DATE	DESCRIPTION
MS	04/19/17		ISSUED FOR PERMIT/BD
MS	03/24/17		ISSUED FOR LL REVIEW



WESTSIDE PROVISIONS
1100 HOWELL MILL RD SUITE A01
ATLANTA, GA 30318

LEASE CONFIRMATION & BARRICADE PLAN

DRAWN BY:	MS
REVIEWED BY:	JP
JOB NO:	10201 06

G003

Order Plans @ WWW.LDOnline.com