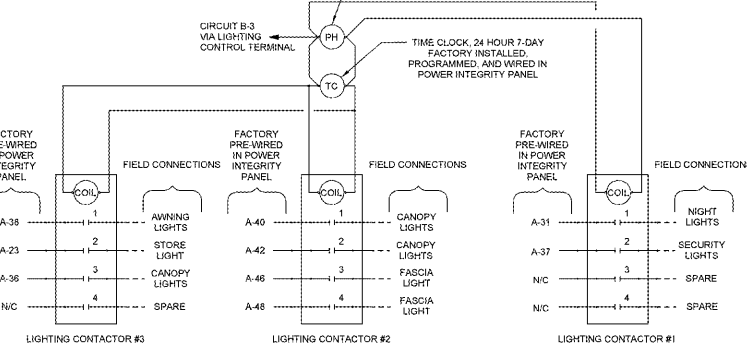


LIGHTING CONTACTORS

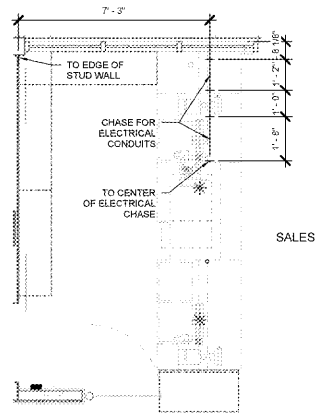
ALL LIGHTING CONTACTORS ARE FACTORY INSTALLED IN THE POWER INTEGRITY PANEL. LINE SIDE OF THE CONTACTORS ARE PRE-WIRED. FIELD CONNECTIONS ARE TO BE MADE TO THE LOAD SIDE OF THE CONTACTORS.

LIGHT CONTACTOR #2 AND #3 ARE WIRED TO OPERATE DURING PRESET STORE HOURS WHEN IT IS OF THE APPROPRIATE LIGHT LEVEL AS SET BY THE PHOTOCELL. LIGHT CONTACTOR #1 IS FOR SECURITY NIGHT LIGHTS. CIRCUITS CONNECTED TO CONTACTOR #1 WILL BE CONTROLLED BY THE PHOTOCELL ONLY.

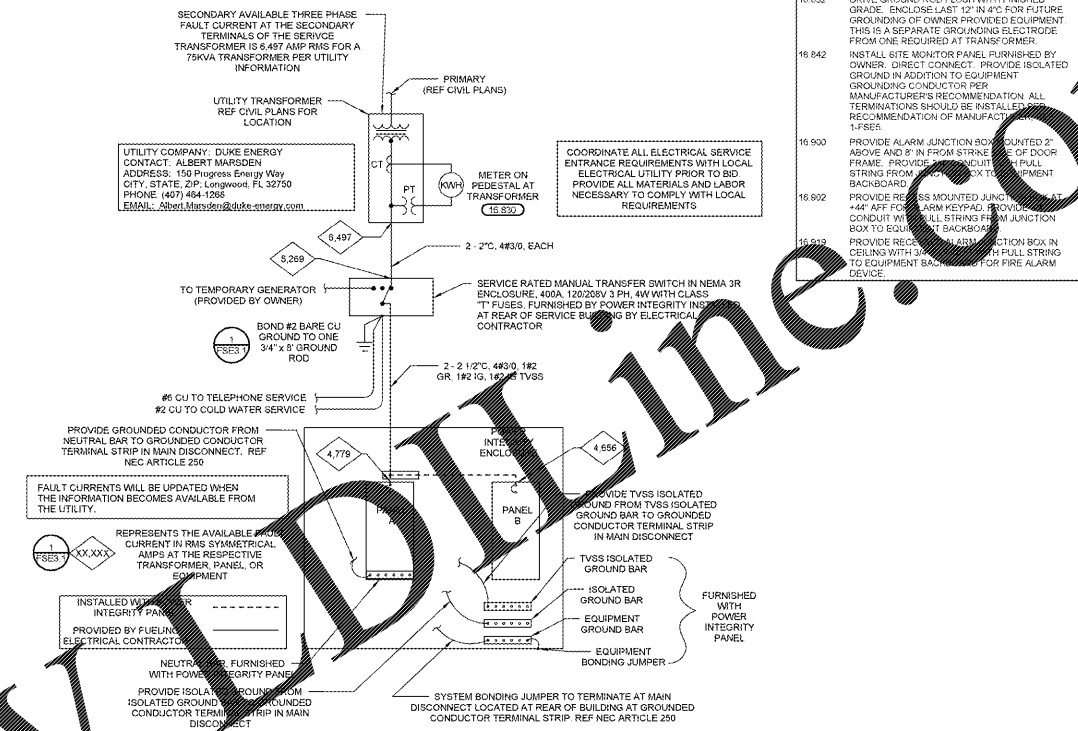


4 LIGHTING CONTACTORS SCHEMATIC

5 CONDUIT DIMENSION PLAN

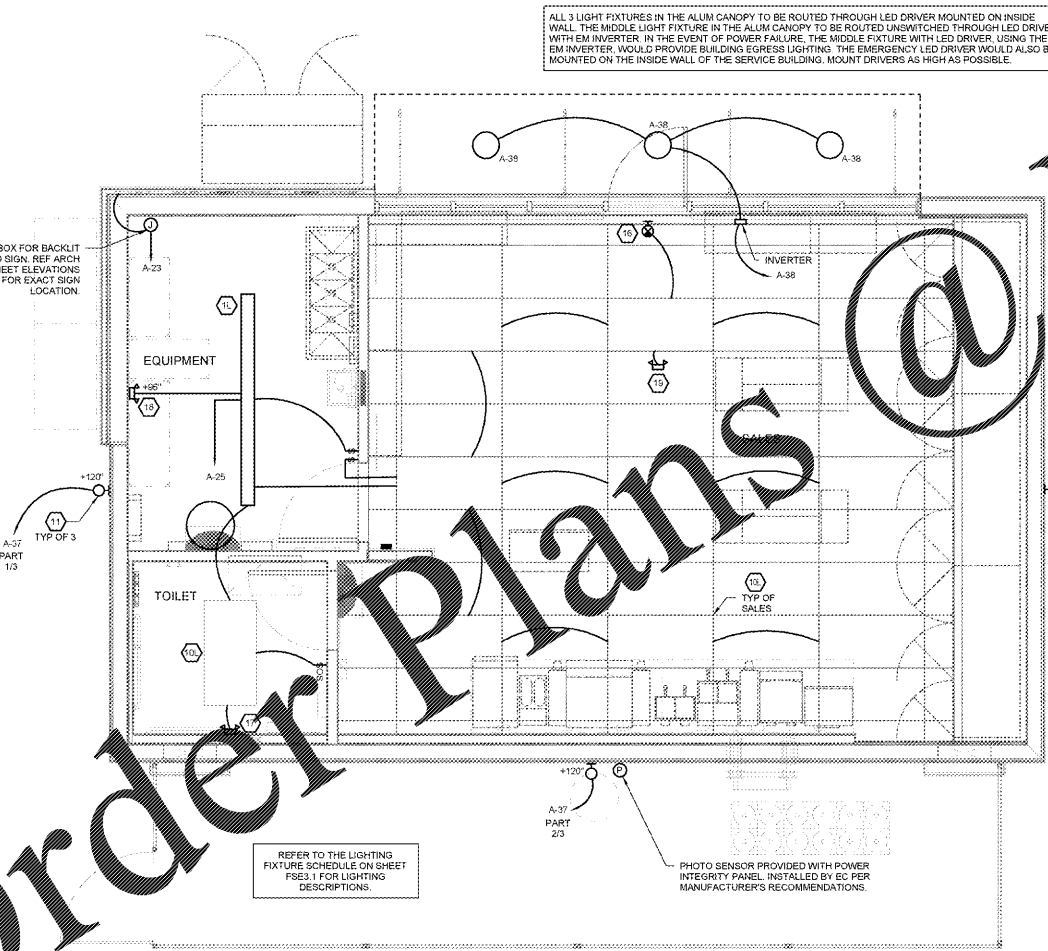


3 ELECTRICAL SINGLE-LINE DIAGRAM

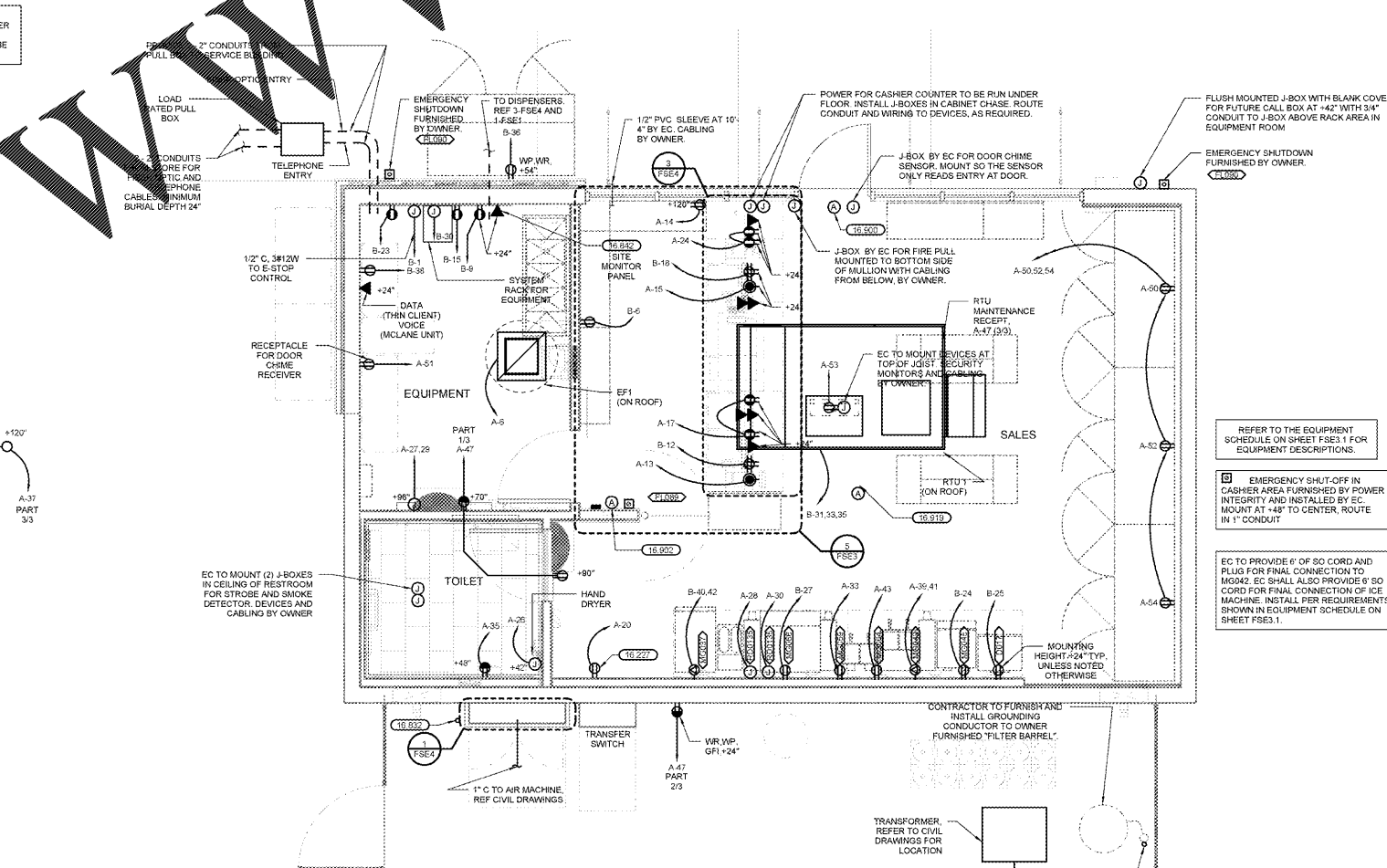


KEYNOTES	
16.227	ELECTRIC WATER COOLER RECEPTACLE CONCEAL WITHIN CABINET PER MANUFACTURER'S REQUIREMENTS.
16.630	COORDINATE LOCATION OF TRANSFORMER WITH CIVIL DRAWINGS. COORDINATE METERING REQUIREMENTS WITH LOCAL UTILITY PROVIDER.
16.632	DRIVE GROUND ROD FLUSH WITH FINISHED GRADE. ENCLOSE LAST 12" IN 4" FOR FUTURE GROUNDING OF OWNER PROVIDED EQUIPMENT. THIS IS A SEPARATE GROUNDING ELECTRODE FROM ONE REQUIRED AT TRANSFORMER.
16.642	INSTALL SITE MONITOR PANEL FURNISHED BY OWNER. DIRECT CONNECT. PROVIDE ISOLATED GROUND IN ADDITION TO EQUIPMENT GROUNDING CONDUCTOR PER MANUFACTURER'S RECOMMENDATION. ALL TERMINATIONS SHOULD BE INSTALLED PER RECOMMENDATION OF MANUFACTURER.
16.900	PROVIDE ALARM JUNCTION BOX MOUNTED 2" ABOVE AND 9" IN FROM STRIKE EDGE OF DOOR FRAME. PROVIDE 1/2" DIA. CONDUIT FROM STRINGS FROM EQUIPMENT BACKBOARD.
16.802	PROVIDE RECESS MOUNTED JUNCTION BOX 44" AFF. FROM STRIKE EDGE OF DOOR FRAME. PROVIDE 1/2" DIA. CONDUIT FROM STRINGS FROM JUNCTION BOX TO EQUIPMENT BACKBOARD.
16.919	PROVIDE RECESS MOUNTED JUNCTION BOX IN CEILING WITH 3/4" DIA. PLUMB STRING TO EQUIPMENT BACKBOARD FOR FIRE ALARM SERVICE.

2 SERVICE BUILDING LIGHTING PLAN



1 SERVICE BUILDING POWER PLAN



STIPULATION FOR THE USE OF THESE PLANS: THESE PLANS ARE TO BE USED ONLY FOR THE PROJECT AND SITE SPECIFICALLY IDENTIFIED HEREIN. ANY OTHER USE OF THESE PLANS WITHOUT THE WRITTEN CONSENT OF THE CONSULTANT IS STRICTLY PROHIBITED. THE CONSULTANT SHALL NOT BE RESPONSIBLE FOR ANY DAMAGE TO PERSONS OR PROPERTY ARISING FROM THE USE OF THESE PLANS.

CONSULTANTS
MPW
 MPW ENGINEERING, LLC
 1100 N. UNIVERSITY BLVD., SUITE 200
 APOKA, FL 32703
 PHONE: (407) 484-1288
 FAX: (407) 484-1289
 EMAIL: info@mpweng.com

Walmart
 APOKA, FL
 STORE NO. 6884
 JOB NUMBER: 097-01-006 | PHOTO: WMB-F40

ISSUE BLOCK	

CHECKED BY: JDS
 DRAWN BY: DJA
 FILE NAME: FSE3
 PHOTO CYCLE: 02/10/17
 DOCUMENT DATE: 04/07/17

BID SET.
 NOT FOR
 CONSTRUCTION

REFER TO THE EQUIPMENT SCHEDULE ON SHEET FSE3.1 FOR EQUIPMENT DESCRIPTIONS.

EMERGENCY SHUT-OFF IN CASHIER AREA FURNISHED BY POWER INTEGRITY AND INSTALLED BY EC. MOUNT AT +48" TO CENTER, ROUTE IN 1" CONDUIT.

EC TO PROVIDE 6" OF SO CORD AND PLUG FOR FINAL CONNECTION TO MIO42. EC SHALL ALSO PROVIDE 6" SO CORD FOR FINAL CONNECTION OF ICE MACHINE. INSTALL PER REQUIREMENTS SHOWN IN EQUIPMENT SCHEDULE ON SHEET FSE3.1.

THIS ITEM HAS BEEN ELECTRONICALLY SIGNED AND SEALED BY JARON MORSE. PE ON THE DATE AND/OR TIME STAMP SHOWN USING A DIGITAL SIGNATURE. PRINTED COPIES OF THIS DOCUMENT ARE NOT CONSIDERED SIGNED AND SEALED AND THE SIGNATURES MUST BE VERIFIED ON ANY ELECTRONIC COPIES.

SERVICE BUILDING ELECTRICAL PLANS ONE LINE DETAILS

SHEET: FSE3

Order Plans @