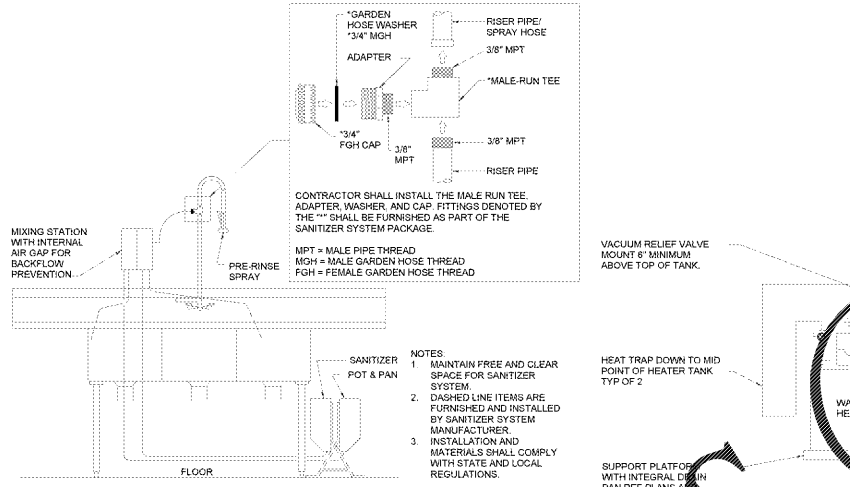


PLUMBING FIXTURE SCHEDULE										
MARK	FIXTURE	BRANCH SIZE (MIN)	CW	HW	WASTE	VENT	Manufacturer	Model	REMARKS	NOTES
EW2	ELECTRIC WATER COOLER (SPLIT LEVEL)	1/2"	1 1/4"	1 1/2"	1 1/2"	1 1/2"	OASIS HALSEY TAYLOR	PC840SL HACFP5BL-Q-ADA OR HACFP5BLR-Q-ADA	STAINLESS STEEL TOP AND CABINET FRONT AND SIDE PUSH BARS, MATCHING UPPER UNIT APRON LEAD FREE WATER BANNER BUBBLER WITH FLEXIBLE BUBBLER GUARD (FOR HALSEY TAYLOR - SMARTFLOW BUBBLER KIT) STOP SMARTFLOW BUBBLER KIT) STOP VALVE, 3/8" X 1/2" SS BRAIDED WATER SUPPLY, P-TRAP WITH CLEANOUT AND ESCUTCHEON, CARRIER, JOSAM 17560-WCBL, WASTE 400-84M1	C
FC01	FLOOR CLEANOUT						JAY R. SMITH JOSAM MFBAB SILOUX CHIEF WATTS WATTS ZURN	4231 55000 C1100 852 85000 CO-200-RX-4 Z1400	CAST IRON OR PVC RIGID, ROUND EXTRA HEAVY-DUTY CAST OR DUCTILE IRON TOP, POLYPROPYLENE OR ABS PLUG, ADJUSTABLE TO FINISH SURFACE	E
FD1	FLOOR DRAIN						JOSAM GATEY SILOUX CHIEF	VEF 400J 17200 842	LIGHT DUTY ADJUSTABLE PVC WITH THREADED ADAPTER AND 6" DIAMETER NICKEL BRONZE RING AND FASTENER GRATE	E
FPWH1	FROST PROOF WALL HYDRANT	3/4"					JOSAM JR SMITH PRIER WADE WOODFORD ZURN	71000 95000T C-348X 8500.175 R65 Z1320	FREEZE PROOF WALL HYDRANT WITH BRASS HINGED BOX, INTERNAL VACUUM BREAKER, AND LOOSE TEE KEY.	B
FS1	FLOOR SINK						SILOUX CHIEF	861	LIGHT DUTY, ACID RESISTANT, WHITE PVC FLOOR SINK WITH 12" SQUARE WHITE PVC HALF GRATE AND STAINLESS STEEL, DEBRIS BUCKET WITH LIFTING HANDLE, REF PLANS FOR LOCATIONS WHERE FULL GRATES ARE SPECIFIED	E
L2	LAVATORY	1/2"	1/2"	1 1/2"	1 1/2"		SLOAN TOTO	SE-3003 L1301.4	FAUCET, TOTO TEL1055D10E - 0.5 GPM SENSOR OPERATED SELF-GENERATING POWER SYSTEM, STANDING SPOUT, 4" COVER PLATE, CREG STRAINER WITH TAILPIECE, P-TRAP WITH CLEANOUT, STOP VALVES, SS BRAIDED WATER SUPPLIES AND ESCUTCHEONS, PROVIDE THERMOSTATIC MIXING VALVE FOR L2	B
PRV	PRESSURE REGULATING VALVE						WATTS WILKINS	LF223 500XL	LEAD FREE BRONZE BODY VALVE WITH SHUT-OFF VALVES FOR SIZES UP TO 2-1/2" CAST IRON BODY FOR 3" AND ABOVE, MAXIMUM OPERATING PRESSURE OF 200 PSI, CONFORM TO ASSE 1036	B
PVB2	PRESSURE VACUUM BREAKER						WATTS WILKINS	LF202P02T 420XL	LEAD FREE BRONZE ANTI-SIPHON, ANTI-SPLASH VACUUM BREAKER AND INLET AND OUTLET SHUT-OFF VALVES, CONFORM TO ASSE 1036	B
SS1	SERVICE SINK (TERRAZZO) 24" x 24" x 12"	3/4"	3/4"	3"	2"		ACORN PIA STERN-WILLIAMS	TSH-24 750-000 SE-800	CHROME PLATED FAUCET WITH INTEGRAL CHECK VALVES, HOSE, BRACKET AND MOP HANGER	A
WC2	WATER CLOSET (FLOOR MOUNT)	1 1/4"		4"	2"		SLOAN TOTO	81-2025A C17056LN	FLUSH VALVE, TOTO TEL1A202CP-W, 1.28 GPF SENSOR OPERATED SELF-GENERATING POWER SYSTEM WITH MANUAL OVERRIDE AND VANDAL RESISTANT SET SCREW ESCUTCHEON AND STOP CAP ELONGATED SEAT, BEMIS 102589S, MAINLINE M, 102583C CAST IRON FLOOR FLANGE, ZURN CP09M4CH, TYLEX 2-212TS, WITH "NO SLEEP" WAX RING AND BRASS ANCHOR BOLTS	D
WCO	CLEANOUT / WALL CLEANOUT						JAY R. SMITH JOSAM MFBAB WADE WATTS ZURN	4472Z 964025600 C1430 85480R CO-250-RD Z147021469	THREADED, COUNTERSUNK BRONZE OR POLYPROPYLENE CLEANOUT PLUG, PROVIDE UNLIDED TAP FOR CENTER SCREW AND STAINLESS STEEL COVER FOR FINISHED AREAS (WCO)	D
YOC	YARD CLEANOUTS						JAY R. SMITH JOSAM MFBAB WADE WATTS ZURN	4250 38600 C1230C1300-MF W-6000W-6330-MF CO-300-MF/CO-360 Z1446Z1474	CAST IRON FERRULE AND PLUG, DURA-COATED CAST IRON, DOUBLE-FLANGED HOUSING, AND EXTRA HEAVY DUTY SCORPATED CAST IRON COVER WITH LIFTING DEVICE, VANDAL-PROOF SCREWS	D

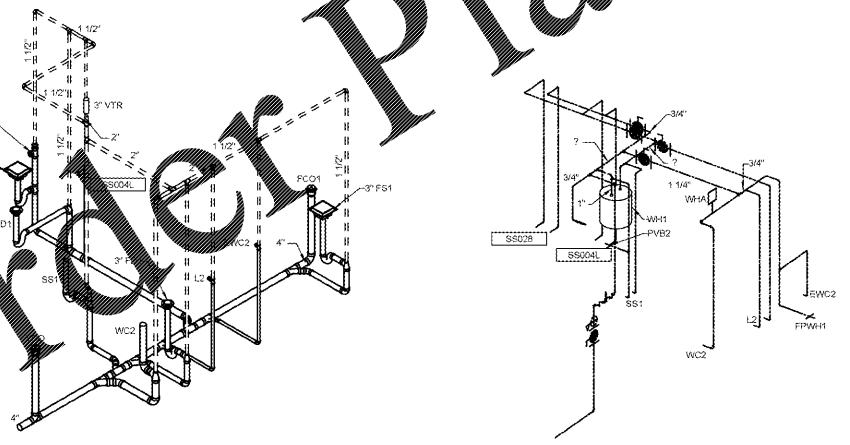
- GENERAL INFORMATION (ALL FIXTURES):
- ALL PRODUCTS ON THIS SCHEDULE ARE FURNISHED BY OWNER AND INSTALLED BY CONTRACTOR. REFER TO SPECIFICATIONS.
 - SUBSTITUTIONS NOT PERMITTED. REF SPECIFICATIONS FOR APPROVED MANUFACTURERS OF THE FOLLOWING TRIM AND ACCESSORIES:
 - P-TRAP WITH CLEANOUT PLUG AND SINK CONTINUOUS WASTES, POLISHED CHROME-PLATED TUBULAR BRASS, 17 GAUGE, WITH BRASS NUTS AND SLIP INSERTS
 - SS BRAIDED WATER SUPPLY, FLEXIBLE BRAIDED STAINLESS STEEL (SS) OUTER SHEATHING WITH REINFORCED PVC INNER TUBING.
 - STOP VALVES: CHROME PLATED BRASS, QUARTER TURN ANGLE STOP VALVES.

- NOTES:
- INSTALL MOP SINK FAUCET AT 52" AFF AND LOCATE TWO MOP HANGER BRACKETS SIDE BY SIDE NEAR MOP SINK
 - INSTALL FURNISHED THERMOSTATIC MIXING VALVE
 - REFERENCE ARCHITECTURAL DRAWINGS FOR EW2 ORIENTATION
 - COORDINATE WATER ROUGH-IN HEIGHT FROM MANUFACTURER'S INSTALLATION INSTRUCTIONS WITH GRAB BAR LOCATION. REF ARCH DWGS.
 - REFER TO PLANS FOR DRAIN OUTLET SIZE



5 TRIPLE SINK SANITIZER ELEVATION

WATER HEATER



3 DWV RISER

2 PLUMBING WATER RISER

SPECIALTY PLUMBING FIXTURE SCHEDULE									
MARK	FIXTURE	FIXTURE DESCRIPTION	MANUFACTURER/CATALOG NUMBER						
WHA	WATER HAMMER ARRESTOR	LEAD FREE, CONFORM TO PDI WH-201, ANSI A112.28.1M, ASSE 1010.							
	JOSAM SERIES 7500	PRECISION PLUMBING PRODUCTS SS #316 SERIES	WATTS SS SERIES						
	JAY R. SMITH HYDROTROLS	SILOUX CHIEF HYDRA-RESTER	MFBAB MWH						
	VALVES	LEAD FREE, FULL PORT BRASS BALL VALVE WITH PLASTIC JACKETED LEVER TYPE HANDLE							
	RED/WHITE 5044B OR 5049AB	APOLLO SERIES 70LF	CRANE LF9210 SERIES						
	DOUBLE-CHECK VALVE	LEAD FREE, INCLUDE TWO INDEPENDENT-ACTING CHECK VALVES, TWO SHUT-OFF VALVES, AND EQUIPPED MEANS FOR TESTING FOR EACH ASSEMBLY, MINIMUM 175 PSI WORKING PRESSURE.	WATTS LF-FBV-3C OR FBV-3C, NIBCO FP-690-A-LF						
	BACKFLOW PREVENTER	LEAD FREE, PROVIDE BRASS PRIMER VALVE WITH REMOVABLE OPERATING PARTS, INTEGRAL VACUUM BREAKER, AND GASKETED ACCESS COVER.	FERCO LF860						
	REDUCED PRESSURE BACKFLOW PREVENTER	LEAD FREE, PROVIDE BRASS PRIMER VALVE WITH REMOVABLE OPERATING PARTS, INTEGRAL VACUUM BREAKER, AND GASKETED ACCESS COVER.	WILKINS 212AL OR R23AL						
	TRAP PRIMER	LEAD FREE, PROVIDE ALL BRONZE PRIMER VALVE WITH REMOVABLE OPERATING PARTS, INTEGRAL VACUUM BREAKER, GASKETED ACCESS COVER, AND MULTIPLE TRAP CAPABILITY.	JOGAM 86300						
	TRAP PRIMER	LEAD FREE, PROVIDE ALL BRONZE PRIMER VALVE WITH REMOVABLE OPERATING PARTS, INTEGRAL VACUUM BREAKER, GASKETED ACCESS COVER, AND MULTIPLE TRAP CAPABILITY.	JOGAM 86300						
	VACUUM RELIEF VALVE	LEAD FREE, BRASS BODY, CSA/ANSI Z21.22	SILOUX CHIEF SERIES 695						
	WATTS LFN36-M1								

FUEL STATION STAINLESS STEEL AND BEVERAGE EQUIPMENT CONNECTION SCHEDULE

MARK	FIXTURE	BRANCH SIZE (MIN)	CW	HW	WASTE	VENT	ROUGH-IN REQUIREMENTS	NOTES
MG037	FROZEN CARBONATED BEVERAGE MACHINE						WATER: BY OTHERS	A, I, K
MG042	COFFEE BREWERS						WATER: BY OTHERS	A, G, K
MG045	HOT BEVERAGE DISPENSER						WATER: BY OTHERS	A, G, K
MG059	TEA BREWERS						WASTE: INDIRECT TO RECEPTOR WATER: BY OTHERS	A, E, G, K
MG064	COFFEE BREWERS						WASTE: INDIRECT TO RECEPTOR WATER: BY OTHERS	A, E, G, K
MG066	SOFT DRINK AND ICE DISPENSER						WASTE: INDIRECT TO RECEPTOR WATER: BY OTHERS	A, E, K
RD0132	ICE MACHINE						WASTE: INDIRECT TO RECEPTOR WATER: BY OTHERS	A, E, G, K
SS024L	HAND SINK	1/2"	1/2"	2"	1 1/4"		WASTE: 18" AFF WATER, 18" AFF WASTE: 12" AFF WATER, 12" AFF	B, C, J
SS028	3 COMPARTMENT SINK	3/4"	3/4"	3"	2"		WASTE: 12" AFF WATER, 12" AFF	C, D, F

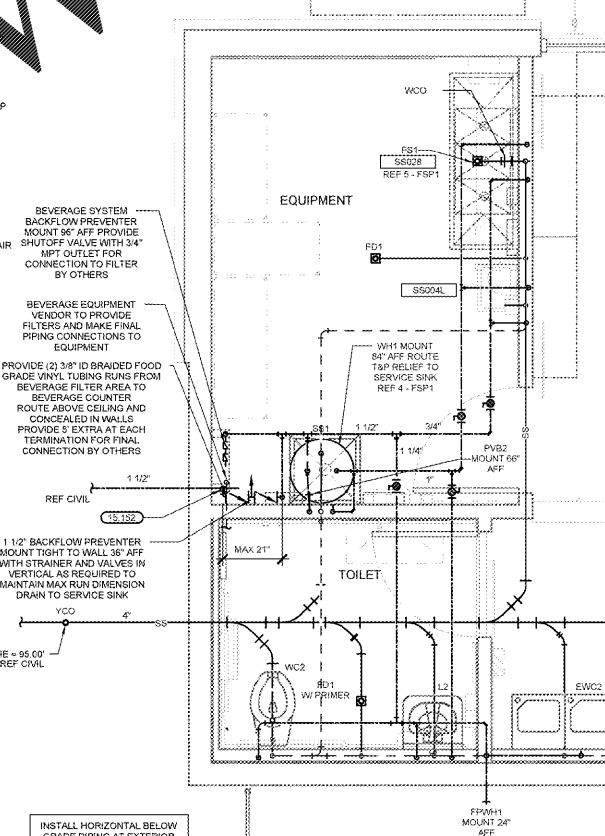
WATER HEATERS / STORAGE TANKS

MARK	AREA SERVED	MANUFACTURER	MODEL	TANK SIZE (GALLONS)	ELECTRIC INPUT	VOLTAGE/PHASES	NOTES
WH1	FUEL STATION	A.O. SMITH	DEL 20	20	4.5 KW	200/100	
		RHEEM	E03P20				
		BRADFORD WHITE	LECO3-33				

EXPANSION TANKS

MARK	MANUFACTURER	MODEL	SIZE	DESCRIPTION
ETA	WATTS	ST-12	12	ANTI-FLOX
		WH-18	18	PLT-12
		XT-18	18	

- GENERAL INFORMATION (WATER HEATERS):
- ALL PRODUCTS ON THIS SCHEDULE ARE FURNISHED BY OWNER AND INSTALLED BY CONTRACTOR. REFER TO SPECIFICATIONS.
 - PROVIDE INDOOR-LOUVER HEATING ELEMENTS FOR ELECTRIC WATER HEATERS
 - PROVIDE ASME TEMPERATURE AND PRESSURE SAFETY VALVE ON WATER HEATER
- NOTES:
- CONTRACTOR TO PROVIDE SUPPORT PLATFORM 1" DRILL #40-SW. ANCHOR WITH ALL IN-ROD ATTACHED TO STRUCTURAL ROOF MEMBERS
 - PROVIDE 4" THICK CONCRETE SLAB (SLEEPING PAN) UNDER WATER HEATER
 - PROVIDE EXPANSION TANKS
 - PROVIDE EXPANSION TANK TIE
 - 140°F OUTLET TEMPERATURE
 - PROVIDE NON-FERROUS DUAL-TEMPERATURE SCHEDULED KW IS FOR INDIVIDUAL ELEMENT



1 PLUMBING FLOOR PLAN

PLUMBING SYMBOLS	
SS	SANITARY SEWER
GW	GREASE WASTE
OW	OIL WASTE
ST	STORM SEWER
RD	ROOF DRAIN LINE
ORD	OVERFLOW ROOF DRAIN LINE
---	DOMESTIC COLD WATER
---	DOMESTIC HOT WATER
---	DOMESTIC HOT WATER RETURN
HW	IRRIGATION WATER
T	TEMPERED WATER
F	FILTERED WATER
G	NATURAL GAS
A	COMPRESSED AIR
CD	CONDENSATE DRAIN
RO	REVERSE OSMOSIS WATER
---	DRIP VENT
---	UNION
---	ELBOW - TURNED DOWN
---	ELBOW - TURNED UP
---	TURNED DOWN
---	TEE - TURNED UP
---	BALL VALVE
---	PLUG VALVE
---	CHECK VALVE
---	SHUT-OFF VALVE IN VERTICAL LINE
---	BACKFLOW PREVENTER
---	WATER METER
---	WATER HAMMER ARRESTOR
---	1 & P RELIEF VALVE
---	FD1 FLOOR DRAIN
---	FCO FLOOR CLEANOUT
---	YCO YARD CLEANOUT
---	FPWH1 FREEZE PROOF WALL HYDRANT
---	HB HOSE BIBB
---	WCO WALL CLEANOUT
---	GAS PRESSURE REGULATOR
---	GAS COCK

- GENERAL NOTES:
- ALL WORK SHALL COMPLY WITH REQUIREMENTS OF PRIMARY BUILDING REFER TO PRIMARY BUILDING PLANS AND SPECIFICATIONS FOR APPLICABLE NOTES, SCHEDULES AND DETAILS
 - INSTALL ALL ITEMS SHOWN UNLESS OTHERWISE SPECIFIED OR NOTED
 - PROVIDE ALL MATERIALS FOR A COMPLETE INSTALLATION IN ALL RESPECTS READY FOR INTENDED USE AND IN STRICT ACCORDANCE WITH STATE AND LOCAL CODES AND MANUFACTURER'S RECOMMENDATIONS
 - COORDINATE SEWER AND WATER CONNECTIONS WITH CIVIL AND SITE CONDITIONS. PROVIDE PRESSURE REDUCING VALVE WHEN WATER PRESSURE IS GREATER AS REQUIRED BY LOCAL CODE
 - REFER TO RISER DIAGRAMS AND PLUMBING FIXTURE SCHEDULE FOR ALL PIPING AND SIZES NOT SHOWN ON THIS PLAN
 - ALL SEWER PIPING SHALL BE 1/2" DIA. MINIMUM
 - BURY WATER AND SEWER PIPING WITH ADEQUATE DEPTH TO PREVENT FREEZE
 - EACH CONTRACTOR IS RESPONSIBLE FOR HAVING THE KNOWLEDGE OF ALL DRAWINGS AND SPECIFICATIONS AS THEY RELATE TO THIS PROJECT. CONTRACTOR'S COMPENSATION IS NOT INCREASED DUE TO LACK OF THIS KNOWLEDGE
 - OBTAIN ALL REQUIRED INSTALLATION PERMITS FROM LOCAL AUTHORITIES AND MAKE ARRANGEMENTS FOR ANY REQUIRED INSPECTIONS
 - FORM REQUIRED ON-SITE TESTING OF PLUMBING SYSTEM AND INCLUDE THE COST OF TESTING IN BID
 - INSURE THAT WATER HEATER IS COMPLETELY FILLED WITH WATER BEFORE POWER TO WATER HEATER IS TURNED ON
 - IF MIXING VALVES ARE REQUIRED, ADJUST TO TEMPERATURE COMPLYING WITH REQUIREMENTS OF LOCAL JURISDICTION
 - FOR PIPING ROUTED ON EXTERIOR WALLS, ROUTE PIPING ON THE INTERIOR SIDE OF WALL OR ON THE INTERIOR SIDE OF INSULATION WHEN SHOWN ROUTED INSIDE INSULATED FURRED WALL TO PROVIDE FREEZE PROTECTION.

KEYNOTES

- 15 152 DOMESTIC WATER SERVICE UP THRU FLOOR PROVIDE SHUT-OFF VALVE AND RPZ BACKFLOW PREVENTER AS REQUIRED PER LOCAL CODE
- 15 155 PROVIDE 2" PVC CONDUIT MINIMUM SCHEDULE 40 WITH LONG SWEEP ELBOWS, SOLVENT WELDED JOINTS, AND PULL STRING FOR FUTURE BEVERAGE AND CO2 TUBING INSTALLED BY OTHERS. COORDINATE WITH VENDOR AND OTHER TRADES REF ARCH DWGS

STIPULATION FOR THE USE OF THIS PLAN: THIS PLAN IS THE PROPERTY OF MPW ENGINEERING, LLC AND IS TO BE USED ONLY FOR THE PROJECT AND SITE SPECIFICALLY IDENTIFIED HEREIN. IT IS NOT TO BE REPRODUCED, COPIED, OR TRANSMITTED IN ANY FORM OR BY ANY MEANS, ELECTRONIC OR MECHANICAL, INCLUDING PHOTOCOPYING, RECORDING, OR BY ANY INFORMATION STORAGE AND RETRIEVAL SYSTEM. WITHOUT THE WRITTEN PERMISSION OF MPW ENGINEERING, LLC, THIS PLAN IS NOT TO BE USED FOR ANY OTHER PROJECT OR SITE. ANY UNAUTHORIZED USE OF THIS PLAN SHALL BE AT THE USER'S SOLE RISK AND WITHOUT LIABILITY TO MPW ENGINEERING, LLC.

MPW ENGINEERING, LLC
1100 S. W. 10TH AVE., SUITE 100
APOPKA, FL 32712
TEL: 407-884-1100
WWW.MPWENGINEERING.COM

CONSULTANTS
MPW ENGINEERING, LLC
1100 S. W. 10TH AVE., SUITE 100
APOPKA, FL 32712
TEL: 407-884-1100
WWW.MPWENGINEERING.COM

ISSUE BLOCK

CHECKED BY: MMW
DRAWN BY: TDT
FILE NAME: FSP1
PROTO CYCLE: 02/10/17
DOCUMENT DATE: 04/07/17

BID SET.
NOT FOR
CONSTRUCTION

THIS ITEM HAS BEEN ELECTRONICALLY SIGNED AND SEALED BY SCOTT C. WEBB. PLEASE PRINT THE DATE AND TIME STAMP SHOWN USING A DIGITAL SIGNATURE. PRINTED COPIES OF THIS DOCUMENT ARE NOT CONSIDERED SIGNED AND SEALED AND THE SIGNATURE MUST BE VERIFIED ON ANY ELECTRONIC COPIES.

SERVICE BUILDING PLUMBING PLAN AND DETAILS

SHEET: FSP1