

AIR DEVICE SCHEDULE							
MARK	SERVICE	MANUFACTURER	MODEL	STYLE	FRAME TYPE	FACE SIZE	NOTES
CD	SUPPLY AIR	TITUS	OMN	ROUND NECK CEILING DIFFUSER	LAY-IN	24x24	B, D, E
CD1	SUPPLY AIR	TITUS	TDC	SQUARE ANGLE CEILING DIFFUSER	SURFACE MOUNT	REF DRAWINGS	B, D, E, I, L
EAG1	EXHAUST	TITUS	350RL	LOUVERED FACE REGISTER	SURFACE MOUNT	REF DRAWINGS	C, D, E, I, L
RAG	RETURN AIR	TITUS	PAR	ROUND NECK CEILING DIFFUSER	LAY-IN	24x24	C, D, E, F
SAW	SUPPLY AIR	TITUS	300RB	LOUVERED FACE REGISTER	SURFACE MOUNT	REF DRAWINGS	B, E, F, I
SD1	SUPPLY AIR SLOT DIFFUSER	TITUS	FL-20-JT	PLENUM SLOT DIFFUSER	LAY-IN	REF DRAWINGS	C, D, E, K

GENERAL INFORMATION (ALL UNITS):  
 1. EQUIPMENT FURNISHED BY OWNER AND INSTALLED BY CONTRACTOR. REFER TO SPECIFICATIONS.  
 2. DIFFUSERS TO BE INSTALLED IN REFERENCE TO BOTTOM OF GRILLE. UNLESS NOTED OTHERWISE.

NOTES:  
 A. 8-WAY (DB1-DB3) OR 4-WAY (DB4-DB8) THROW UNLESS SHOWN OTHERWISE WITH FLOW ARROWS ON PLAN.  
 B. ALL STEEL CONSTRUCTION.  
 C. ALL ALUMINUM CONSTRUCTION.  
 D. BRANCH DUCT SIZE SHALL BE SAME AS NOTED DIFFUSER NECK SIZE UNLESS NOTED OTHERWISE.  
 E. STANDARD WHITE FINISH.  
 F. PROVIDE NECK FOR DUCT CONNECTION.  
 G. DROP BOX DIFFUSERS, SUPPLY AIR DUCT TRANSITIONS, AND RETURN AIR PLENUMS FURNISHED BY OWNER, INSTALLED BY CONTRACTOR. REFER TO SPECIFICATIONS.  
 H. PROVIDE INTEGRAL OPPOSED BLADE DAMPERS ON ALL DRUM LOUVERS ON DROP BOXES WITH BRANCH DUCTWORK ATTACHED TO THE SUPPLY PLENUM.  
 I. PROVIDE MANUFACTURER'S BALANCE DAMPER ACCESSIBLE THRU THE FACE.  
 J. PROVIDE WITH FASTENERS FOR COMPLETE (NON-HINGED) REMOVABILITY OF GRILLE. DO NOT PROVIDE FILTER UNLESS NOTED OTHERWISE.  
 K. TWO 2" SLOTS WITH MANUFACTURER'S INSULATED PLENUM (TITUS FS#1, PRICE JS#1, CARINS CPX#1).  
 L. PROVIDE CEILING TRANSITION REGISTER BOX WITH 1" OR 2" PLATE FOR ROUGH-IN.  
 M. GRAY FINISH.  
 N. REFER TO PLANS FOR DIRECTIONAL ARROWS INDICATING CFM THROWS FOR PROPER GRILLE SELECTION.  
 O. PROVIDE WITH FLANGED FRAME, INSECT SCREEN, AND FACTORY FINISH SUITABLE FOR FIELD PAINT.

VOLUME/BALANCE DAMPER SCHEDULE	
TYPE	MANUFACTURER/MODEL
ROUND	ABS MVCSD
RECTANGULAR	ABS AMD4

GENERAL INFORMATION (ALL DEVICES):  
 1. ALL PRODUCTS ON THIS SCHEDULE ARE FURNISHED BY OWNER AND INSTALLED BY CONTRACTOR. REFER TO SPECIFICATIONS.

FAN SCHEDULE									
MARK	AREA SERVED	MANUFACTURER	MODEL	MOUNTING FAN TYPE	SECS EXHAUST FAN CFM	ESP (in wg)	VOLT PHASE HERTZ	CONTROL METHOD	NOTES
EFT	TOILET SERVICE AREA ISLAND	WESTINGHOUSE	WE20R22 G-08-D FWH009 DXTOR	ROOFTOP CENTRIFUGAL	430 CFM	0.38	120/160	CONTINUOUS	A, B, C, D, E

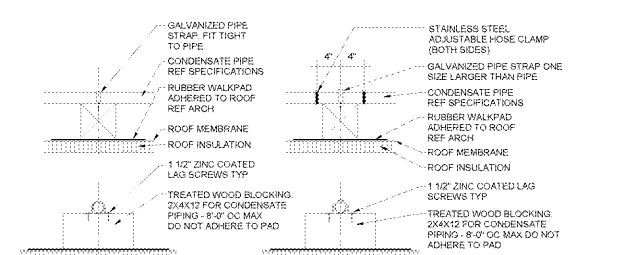
GENERAL INFORMATION (ALL DEVICES):  
 1. EQUIPMENT FURNISHED BY OWNER AND INSTALLED BY CONTRACTOR. REFER TO SPECIFICATIONS.  
 2. FANS MUST BE UL OR ETL LISTED.  
 3. ALL FANS EXCEPT FOR OVERHEAD CIRCULATING FANS MUST BE AMCA CERTIFIED.

NOTES:  
 A. FURNISH WITH FACTORY MOUNTED DISCONNECT.  
 B. FURNISH WITH GRAVITY BACKDRAFT DAMPER AND BIRDSCREEN.  
 C. ROOF CURB FURNISHED BY OWNER. REFER TO SPECIFICATIONS.  
 D. FURNISH WITH FACTORY PRE-WIRED FAN SPEED CONTROLLER.  
 E. FASTEN THE BASE OF EXHAUST FAN TO ROOF CURB WITH (8) #10 SET SCREWS AND NEOPRENE / SS BONDED WASHERS (2 PER SIDE).  
 F. PROVIDE BRUSH SEAL WALL CAP WITH INTEGRAL BACKDRAFT DAMPER AND BIRDSCREEN. INSTALL PER MANUFACTURER'S INSTRUCTIONS.

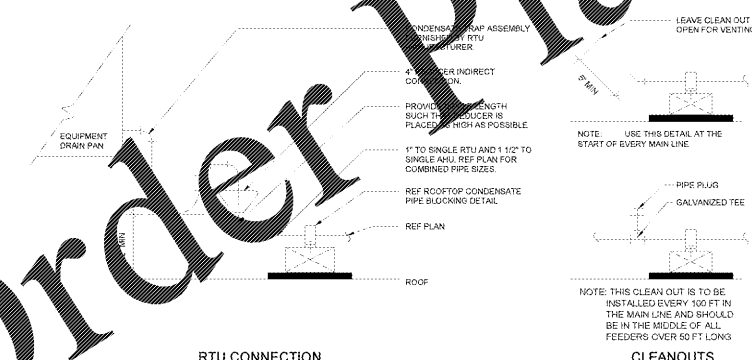
ROOFTOP UNIT SCHEDULE													
MARK	AREA SERVED	MANUFACTURER	MODEL	CFM	OSA CFM	ESP	HEAT TYPE	SMOKE DETECTOR LOCATION	W/WHZ	MCA	MOPC	OPERATING WEIGHT (LBS)	FAN
RTU1	KICKS	LENNOX	LCH0204M	2800 CFM	400 CFM	0.50 in-wg	ELECTRIC - 22.5 KW	RA	209/963	66	70 A	1325	AUTO

GENERAL INFORMATION (ALL UNITS):  
 1. UNITS FURNISHED BY OWNER. INSTALLATION, FIELD LABELING, AND STARTUP BY CONTRACTOR.  
 2. OUTSIDE AIR IS CONDITIONED THROUGH THE ROOFTOP UNITS AS SCHEDULED ABOVE IN ACCORDANCE WITH ASHRAE 62.1-2010.  
 3. UNIT ENERGY EFFICIENCY RATINGS (EER) PER ARI 210 & 240 ARE AS FOLLOWS: 7.5 TON = 12.7, 8.5 TON = 12.4.  
 4. SMOKE DETECTORS ARE FACTORY INSTALLED.  
 5. UNITS ARE PROVIDED WITH HACR-TYPE RATED CIRCUIT BREAKER.  
 6. UNITS ARE PROVIDED WITH A SINGLE POINT POWER CONNECTION.  
 7. ROOF CURB AND ANCHOR BRACKETS FURNISHED BY OWNER. INSTALLED BY CONTRACTOR. REFER TO SPECIFICATIONS AND HVAC SEISMIC RESTRAINT BRACKET DET. INSTALLED BY THE CONTRACTOR.  
 8. UNITS ARE PROVIDED WITH FACTORY INSTALLED BACNET RTU CONTROLLER. TEMPERATURE SENSOR AND HUMIDISTAT ARE FURNISHED SEPARATELY BY LENNOX AND INSTALLED BY THE CONTRACTOR.  
 9. UNITS ARE PROVIDED WITH HIGH PERFORMANCE ECONOMIZERS.  
 10. UNITS ARE PROVIDED WITH A CONVENIENCE RECEPTACLE.  
 11. UNITS ARE PROVIDED WITH A HUMIDITROL DEHUMIDIFICATION SYSTEM AND PIPING KIT.  
 12. UNITS EQUIPPED WITH MULTI-STAGE AIR VOLUME (MSAV) CAPABILITIES.  
 13. RTU SETPOINTS - SCHEDULE 247. COOLING SETPOINT: 76 +0.5. HEATING SETPOINT: 68 +0.5. DEHUMIDIFICATION SETPOINT: 65 +0.5. 13%  
 14. REFER TO MANUFACTURER'S INSTRUCTIONS FOR SEQUENCES OF OPERATION.  
 15. FACTORY APPLIED CORROSION INHIBITING TREATMENT #1 REQUIRED.  
 16. FACTORY APPLIED CORROSION INHIBITING TREATMENT #2 REQUIRED.  
 17. FACTORY FURNISHED KEY ACTIVATED REMOTE SMOKE DETECTOR TEST STATION INSTALLED BY CONTRACTOR.  
 18. PROVIDE FACTORY INSTALLED CONDENSATE DRAIN PAN FLOT SWITCH KIT.

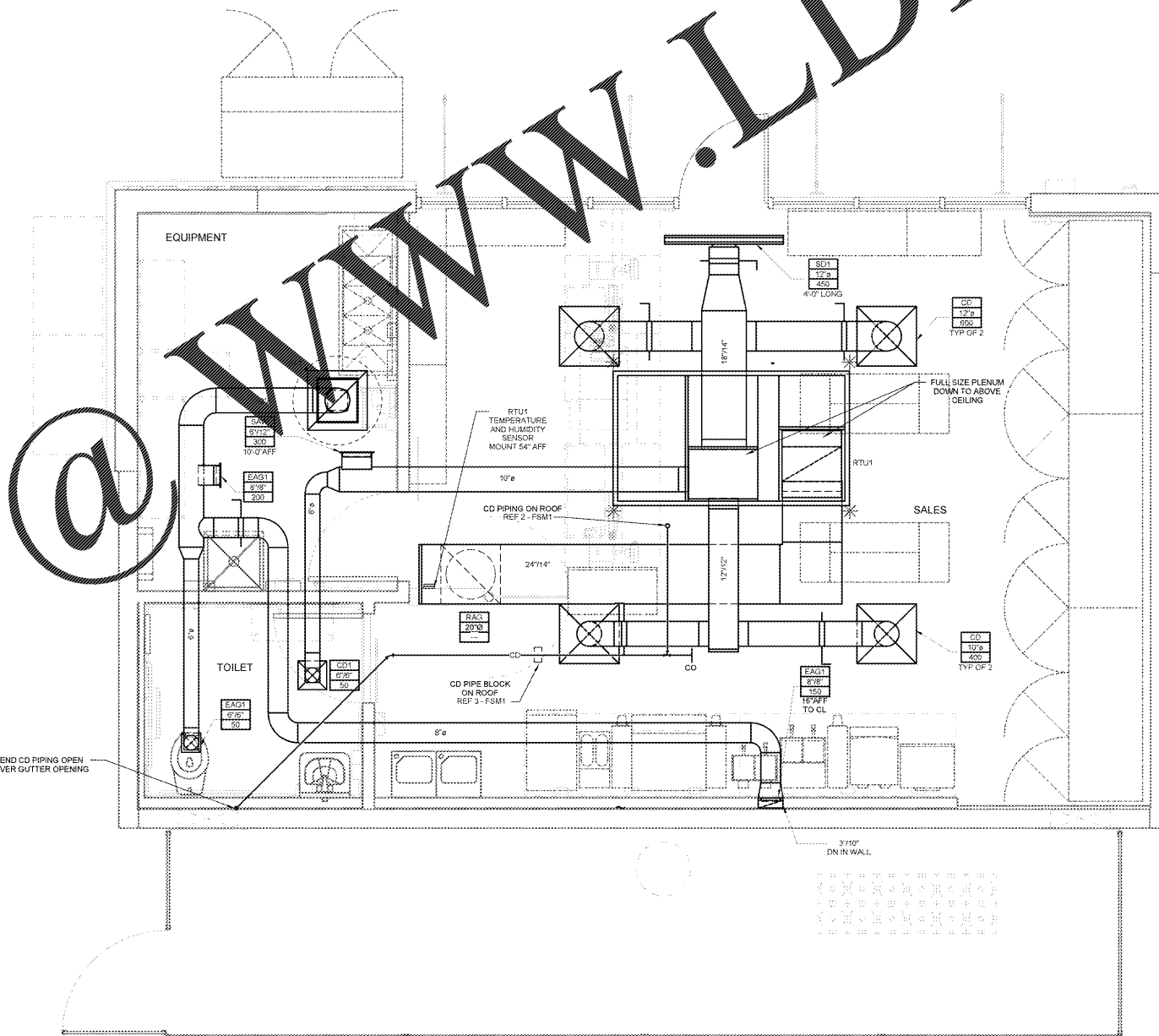
- GENERAL NOTES**
- ALL WORK SHALL COMPLY WITH REQUIREMENTS OF PRIMARY BUILDING. REFER TO PRIMARY BUILDING PLANS FOR APPLICABLE NOTES, SCHEDULES AND DETAILS.
  - INSTALL ALL HVAC EQUIPMENT AND MAKE FINAL CONNECTIONS PER MANUFACTURER'S INSTALLATION INSTRUCTIONS.
  - PROVIDE CONDENSATE P-TRAP DRAIN CONNECTION AT RTU DRAIN PAN. REFER TO CONDENSATE DRAIN PIPING DETAIL. VERIFY FREE FLOW OF CONDENSATE FROM RTU TO APPROVED DISCHARGE POINT.
  - ROUTE LOW VOLTAGE CONTROL WIRING IN CONDUIT UP TO JOIST SPACE.
  - ENTIRE HVAC SYSTEM MUST BE FULLY OPERABLE AND APPROVED BY OWNER'S REPRESENTATIVE PRIOR TO OPENING UP AREA. INCREASE RECTANGULAR SHEET METAL SIZE AS REQUIRED FOR OWNER. PROVIDE 1" LINER ON RECTANGULAR SUPPLY DUCTWORK. PROVIDE 2" LINER ON RECTANGULAR RETURN AIR DUCTWORK.
- MECHANICAL SYMBOLS**
- RECTANGULAR DUCT 18" WIDE BY 12" DEEP
  - 12" DIAMETER ROUND DUCT
  - SUPPLY DUCT IN SECTION
  - RETURN OR EXHAUST DUCT IN SECTION
  - ELBOW WITH TURNING VANES
  - TEE WITH TURNING VANES
  - RECTANGULAR RADIUS ELBOW
  - RECTANGULAR TEE
  - ROUND (OR OVAL) ELBOW
  - VOLUME CONTROL DAMPER
  - SUPPLY AIR DIFFUSER WITH ROUND SUPPLY DUCT
  - RETURN OR EXHAUST AIR DIFFUSER WITH ROUND DUCT
  - DIFFUSER OR GRILLE TYPE BRANCH DUCT AND/OR NECK SIZE CFM
  - THERMOSTAT
  - TIMER
  - TEMP SENSOR
  - VERRIDE TEMP SENSOR



3 ROOFTOP CONDENSATE PIPE BLOCKING  
1/2" = 1'-0"



2 ROOFTOP CONDENSATE DRAIN  
NTS



1 HVAC FLOOR PLAN  
1/2" = 1'-0"

Order Plans

STIPULATION FOR THE USE OF THIS PLAN: THIS PLAN IS THE PROPERTY OF MPW ENGINEERING, LLC. IT IS TO BE USED ONLY FOR THE PROJECT AND SITE SPECIFICALLY IDENTIFIED HEREON. IT IS NOT TO BE REPRODUCED, COPIED, OR TRANSMITTED IN ANY FORM OR BY ANY MEANS, ELECTRONIC OR MECHANICAL, INCLUDING PHOTOCOPYING, RECORDING, OR BY ANY INFORMATION STORAGE AND RETRIEVAL SYSTEM, WITHOUT THE WRITTEN PERMISSION OF MPW ENGINEERING, LLC. THE USER OF THIS PLAN AGREES TO HOLD MPW ENGINEERING, LLC HARMLESS FROM AND AGAINST ALL CLAIMS, DAMAGES, LOSSES, AND EXPENSES, INCLUDING REASONABLE ATTORNEY'S FEES, THAT MAY BE ASSERTED AGAINST OR INCURRED BY MPW ENGINEERING, LLC AS A RESULT OF THE USER'S USE OF THIS PLAN.

CONSULTANTS  
**MPW ENGINEERING, LLC**  
 1100 N. W. 10th St., Suite 100  
 Ft. Lauderdale, FL 33304  
 (954) 551-1100  
 www.mpweng.com

Walmart  
 APOKA, FL  
 STORE NO. 6884  
 09/15/06 PHOTO  
 WMS# 742

CHECKED BY: MMW  
 DRAWN BY: TDT  
 FILE NAME: FSM1  
 PHOTO CYCLE: 02/10/17  
 DOCUMENT DATE: 04/07/17

ISSUE BLOCK

NO.	DESCRIPTION	DATE

BID SET.  
NOT FOR  
CONSTRUCTION

THIS ITEM HAS BEEN ELECTRONICALLY SIGNED AND SEALED BY SCOTT C. WEBB. PE ON THE DATE AND/OR TIME STAMP SHOWN USING A DIGITAL SIGNATURE. PRINTED COPIES OF THIS DOCUMENT ARE NOT CONSIDERED SIGNED AND SEALED AND THE SIGNATURES MUST BE VERIFIED ON ANY ELECTRONIC COPIES.

SERVICE BUILDING MECHANICAL PLAN AND DETAILS

SHEET: FSM1