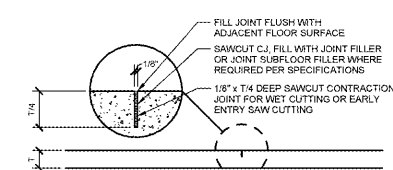
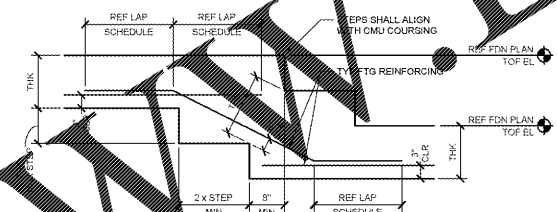


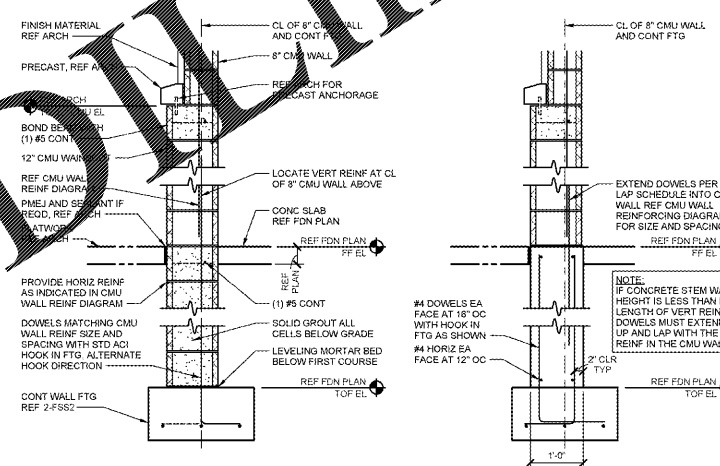
9 CORNER BAR REINF
3/4" = 1'-0"



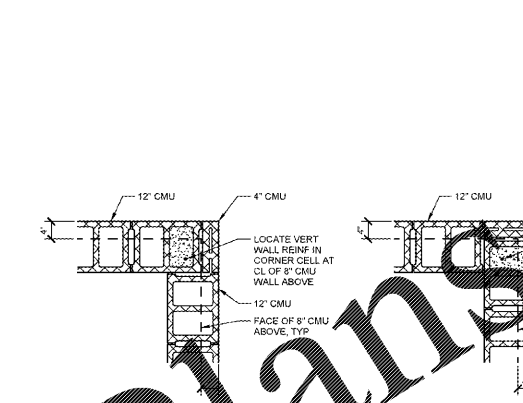
8 CONTRACTION JOINT (CJ)
3/4" = 1'-0"



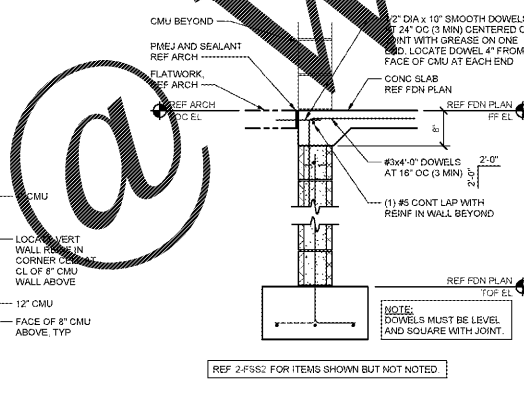
7 FOOTING STEP
3/4" = 1'-0"



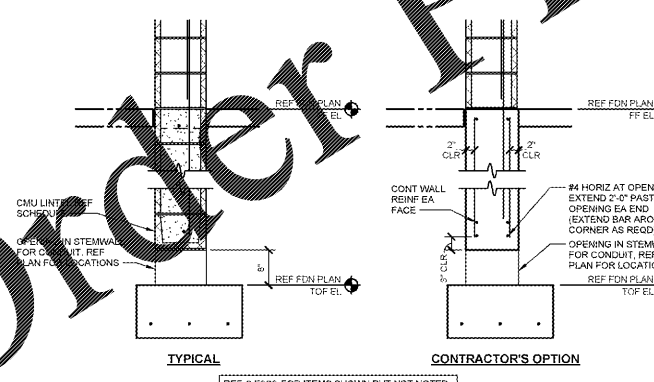
6 EXTERIOR WALL FOOTING AT 12\"/>



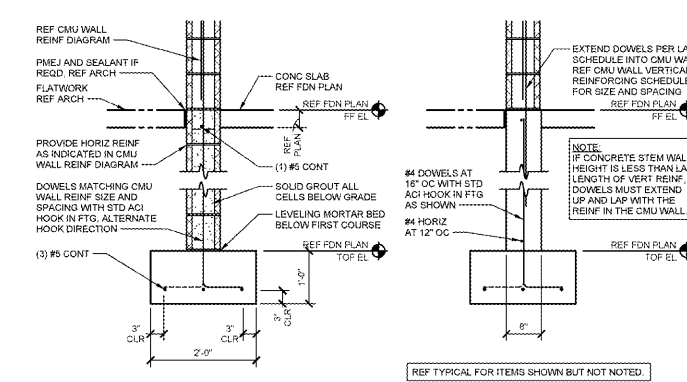
5 12\"/>



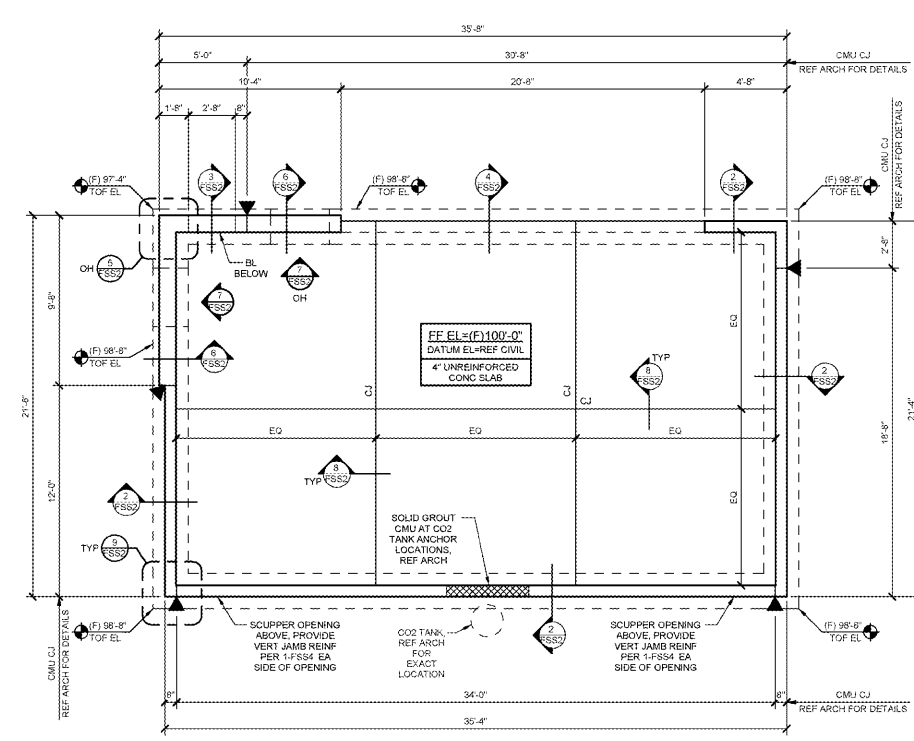
4 SLAB AT OPENING
3/4" = 1'-0"



3 EXTERIOR WALL AT CONDUIT OPENING
3/4" = 1'-0"



2 EXTERIOR WALL FOOTING
3/4" = 1'-0"



1 SERVICE BUILDING FOUNDATION PLAN
1/4" = 1'-0"

- FOUNDATION PLAN NOTES**
1. REF SHEET FSS0 FOR GENERAL NOTES AND DESIGN CRITERIA.
 2. BEFORE STARTING WORK, COORDINATE LOCATION OF ALL STEEL JOISTS AND BEAMS WHICH BEAR ON MASONRY, GROUT AND REINFORCE WALL PER DETAILS.
 3. "BL" DENOTES CMU BLOCK LINTEL. REF CMU LINTEL SCHEDULE FOR SIZE AND REINF.
 4. VERIFY ALL WALL OPENING DIMENSIONS AND LOCATIONS WITH ARCHITECTURAL DRAWINGS.
 5. REF ARCHITECTURAL DRAWINGS FOR SIZE AND LOCATION OF ALL EXTERIOR PADS.
 6. REF PLUMBING DRAWINGS FOR DRAIN LOCATIONS AND SLAB DEPRESSIONS AT DRAINS.
 7. REF FDN SUBSURFACE PREPARATION NOTE FOR UNDERSLAB REQUIREMENTS.

CHECKED BY: BCB
DRAWN BY: MAV
PROTO CYCLE: 021017
DOCUMENT DATE: 04/07/17
JSA PROJECT #: 96506894

BID SET NOT FOR CONSTRUCTION

SERVICE BUILDING FOUNDATION PLAN AND DETAILS

SHEET: **FSS2**

4/7/2017 3:58:05 PM

WALMART
AOPKA, FL
STORE NO 6894-00

CONSULTANTS
WALMART STORE # 6894-00
96506894

WALMART STORE # 6894-00
96506894

WALMART STORE # 6894-00
96506894

WALMART STORE # 6894-00
96506894

ISSUE BLOCK

CHECKED BY: BCB
DRAWN BY: MAV
PROTO CYCLE: 021017
DOCUMENT DATE: 04/07/17
JSA PROJECT #: 96506894

BID SET NOT FOR CONSTRUCTION

SERVICE BUILDING FOUNDATION PLAN AND DETAILS

SHEET: **FSS2**