

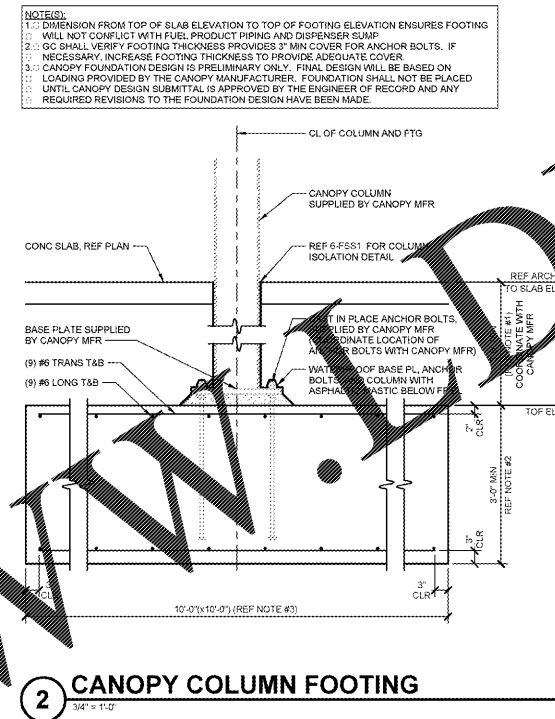
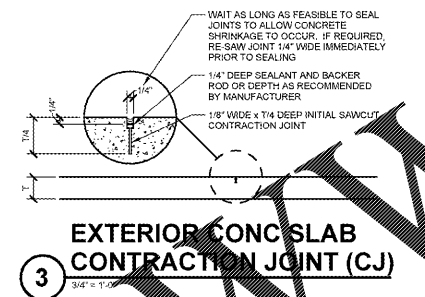
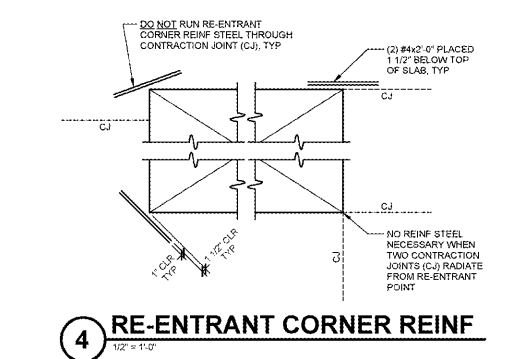
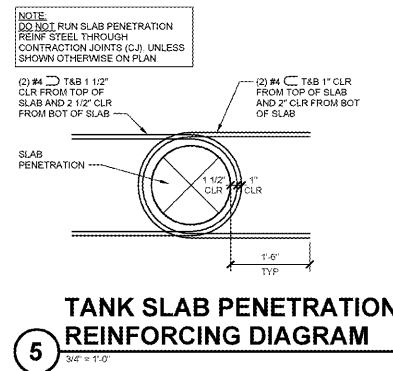
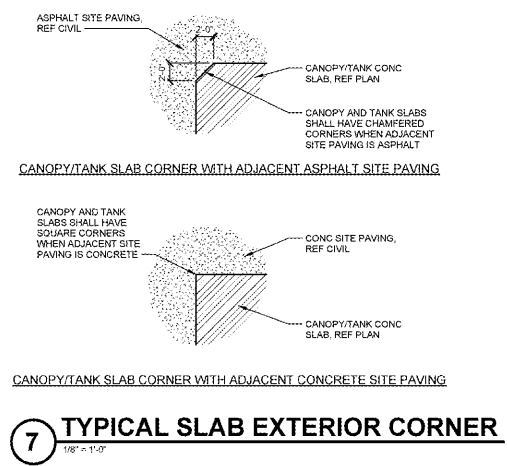
| ISSUE BLOCK | |
|-------------|--|
| | |
| | |
| | |

| | |
|----------------|----------|
| CHECKED BY: | B/CB |
| DRAWN BY: | MAV |
| PROTO CYCLE: | 021017 |
| DOCUMENT DATE: | 04/07/17 |
| JSA PROJECT #: | 9606894 |

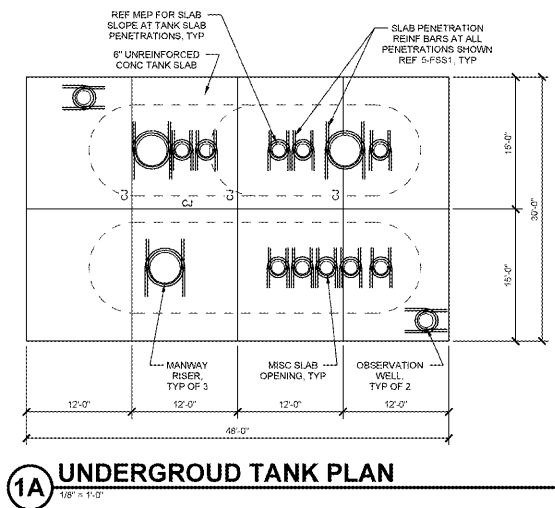
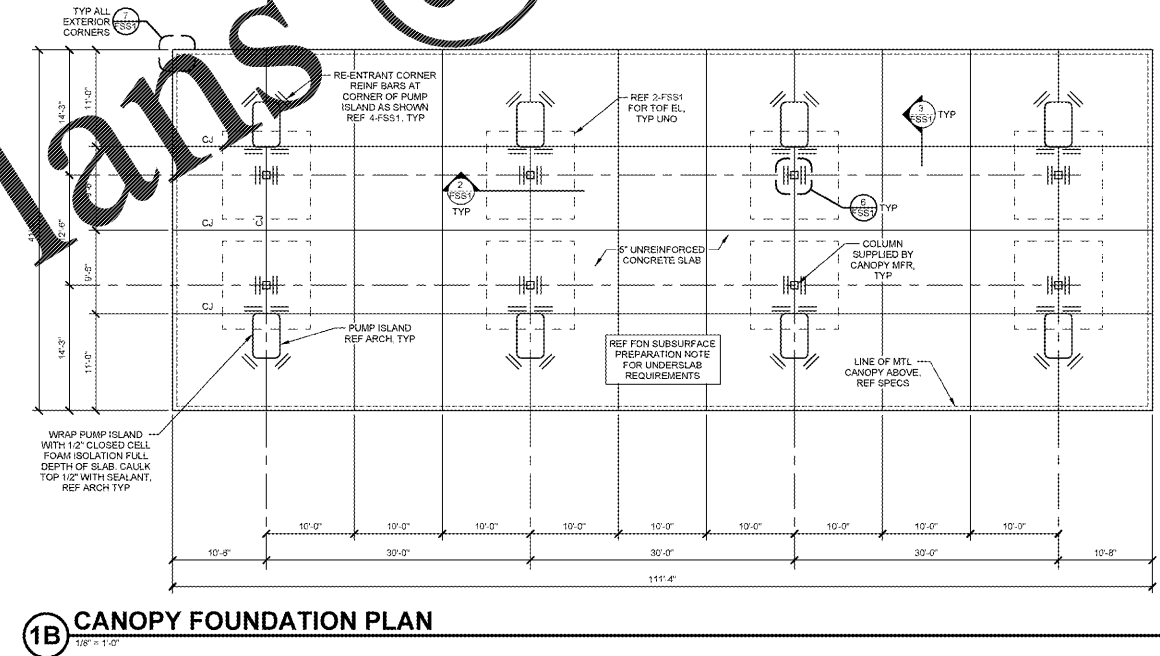
BID SET NOT FOR CONSTRUCTION

CANOPY PLAN AND DETAILS

SHEET: FSS1



- ### FUEL CANOPY GENERAL NOTES
- 1.0 GENERAL
 - 1.1 MANUFACTURER SHALL DESIGN AND SUPPLY ALL CANOPY FRAMING AND SUBSEQUENT CONNECTIONS (INCLUDING BASE PLATES AND ANCHOR BOLTS) TO MEET THE CANOPY DESIGN LOAD CRITERIA SHOWN ON SHEET FSS0.
 - 1.2 STRUCTURAL DESIGN OF THE CANOPY SHALL BE PERFORMED BY AN ENGINEER LICENSED IN THE PROJECT STATE.
 - 1.3 PROFILES ARE SHOWN FOR GRAPHICAL PURPOSES ONLY AND NOT INTENDED TO SUGGEST CONFIGURATION OF PRIMARY MEMBERS.
 - 2.0 CONCRETE AND REINFORCING STEEL
 - 2.1 REFER TO GENERAL NOTES SECTION 3 ON SHEET FSS0 FOR CONCRETE AND REINFORCING STEEL GENERAL NOTES.
 - 3.0 CANOPY REACTIONS
 - 3.1 MANUFACTURER SHALL PROVIDE ALL FOUNDATION REACTIONS TO THE BUILDING ENGINEER FOR REVIEW AND VERIFICATION OF FOUNDATION DESIGN (FOUNDATION DESIGN BY BUILDING ENGINEER). WIND AND SEISMIC REACTIONS SHALL BE PROVIDED AT ASD SERVICE LEVEL. MANUFACTURER SHALL PROVIDE A REACTION TABLE ON THE SHOP DRAWINGS LISTING THE VERTICAL LOADS, SHEAR LOADS, AND MOMENTS FOR EACH OF THE FOLLOWING LOAD CATEGORIES: DEAD, LIVE, SNOW, WIND, AND SEISMIC. DO NOT PROVIDE COMBINED LOAD REACTIONS.
 - 3.2 MANUFACTURER SHALL PROVIDE THE MINIMUM AND MAXIMUM REACTIONS NOTED ABOVE FOR THE WIND AND SEISMIC LOAD CATEGORIES.
 - 3.3 SNOW REACTIONS SHALL INCLUDE UNBALANCED SNOW LOADS AND/OR HIGH-LOW ROOF DRIFTING FROM THE MAIN BUILDING WHEN APPLICABLE.
 - 4.0 CONSTRUCTION AND SAFETY
 - 4.1 CANOPY ERECTOR SHALL PROVIDE TEMPORARY BRACING FOR THE ENTIRE CANOPY STRUCTURE UNTIL ALL STRUCTURE AND CONNECTIONS ARE INSTALLED AND FUNCTIONING AS THE DESIGNED UNIT.
 - 4.2 THE CONTRACTOR SHALL BE RESPONSIBLE FOR THE MEANS, METHODS, TECHNIQUES, SEQUENCES OR PROCEDURES OF CONSTRUCTION SELECTED.
 - 4.3 THE CANOPY ERECTOR SHALL BE SOLELY AND COMPLETELY RESPONSIBLE FOR THE CONDITIONS OF THE JOB SITE IN AND AROUND THE CANOPY INCLUDING THE SAFETY OF ALL PERSONS AND PROPERTY.



Order Plans @