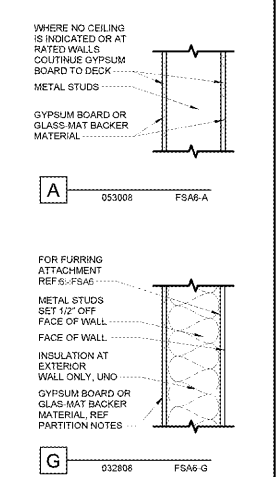
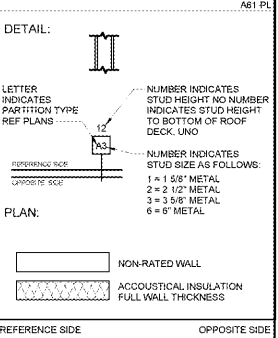


- PARTITION NOTES**
- STUDS CONTINUE TO DECK UNO. REF CAPTURE TRACK DETAILS FOR DEFLECTION REQUIREMENTS.
 - USE 1/2" WATER RESISTANT GYPSUM BOARD BEHIND ALL NRP BOARD.
 - FOR PARTITIONS NOT DIRECTLY ANCHORED TO STRUCTURE ABOVE AND WITH STUDS LESS THAN 6" WIDE, PROVIDE ALTERNATING DIAGONAL METAL STUD BRACING FROM DECK TO WALL STUDS ABOVE CEILING AT 48" OC, REF 5-FSA6.
 - REF ROOM FINISH SCHEDULE FOR ROOMS THAT RECEIVE NRP.
 - CONTINUE FINISH MATERIAL TO A MINIMUM OF 4" ABOVE SUSPENDED CEILING SYSTEM.
 - REF PARTITION KEY SYMBOL FOR STUD WIDTH.
 - WHERE NO CEILING IS INDICATED, CONTINUE FINISH TO TOP OF STUDS UNO.
 - WHERE NO CEILING IS SCHEDULED, STOP 1/2" PLYWOOD AT 120'-9" AFF.
 - STUD WALLS RECEIVING PLYWOOD SHALL BE 22 GAUGE OR HEAVIER.
 - USE 1/2" GLASS-MAT BACKER MATERIAL BEHIND ALL CERAMIC TILE, UNO.
 - REF SPECIFICATIONS FOR LATERAL BRACING OF STUDS.
 - USE 1/2" GYPSUM BOARD ON NON-RATED PARTITIONS.

PARTITION LEGEND
A61 PL



WALMART STORE NO. 6894-00
APOPKA, FL

ISSUE BLOCK

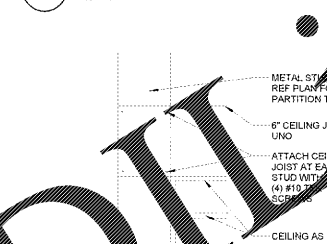
CHECKED BY: MMA
DRAWN BY: MMA
FILE NAME: 740R-FSA6
PROTO CYCLE: 021917
DOCUMENT DATE: 04/07/17

BID SET NOT FOR CONSTRUCTION

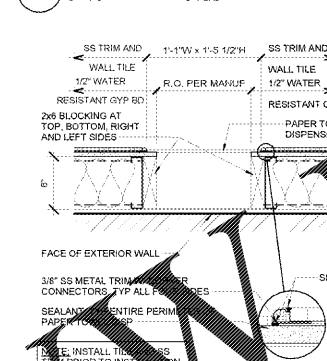
PARTITION TYPES AND MISC DETAILS

SHHEET: FSA6

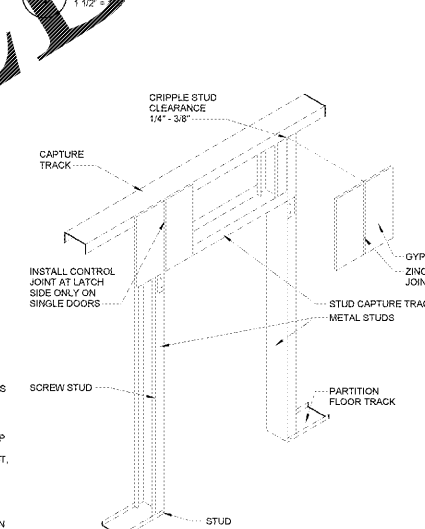
5 PARTITION BRACING
1 1/2" = 1'-0"



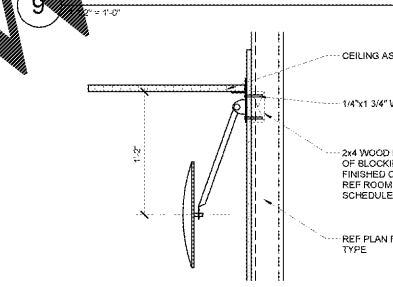
10 ENLARGED SECTION
3" = 1'-0"



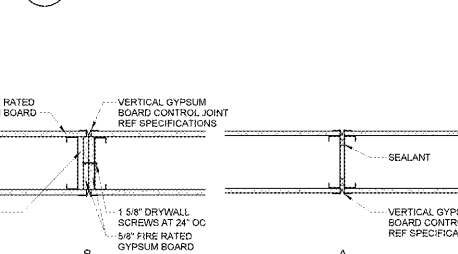
CEILING JOIST ATTACHMENT
1 1/2" = 1'-0"



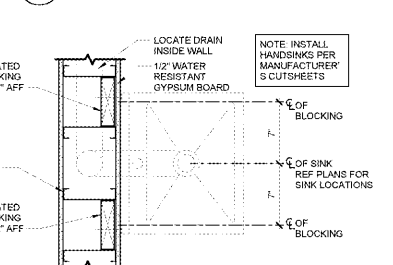
9 FLUSH TILE DETAIL AT PAPER TOWEL DISPENSER
1 1/2" = 1'-0"



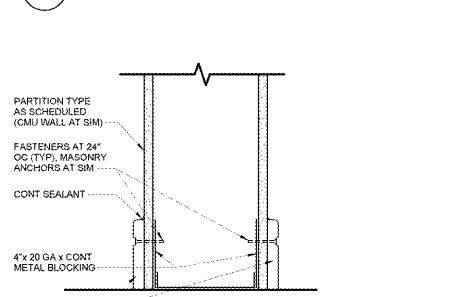
3 CONTROL JOINT AT DOOR JAMB
NOT TO SCALE



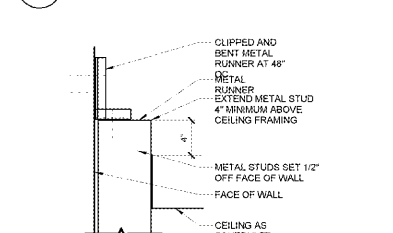
8 CONVEX MIRROR BLOCKING
1 1/2" = 1'-0"



2 GYPSUM BOARD CONTROL JOINT
1 1/2" = 1'-0"



7 BLOCKING AT HAND SINK
1 1/2" = 1'-0"



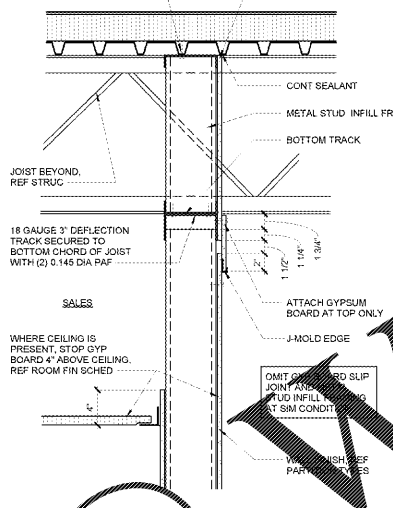
6 ATTACHMENT TO WALL
1 1/2" = 1'-0"



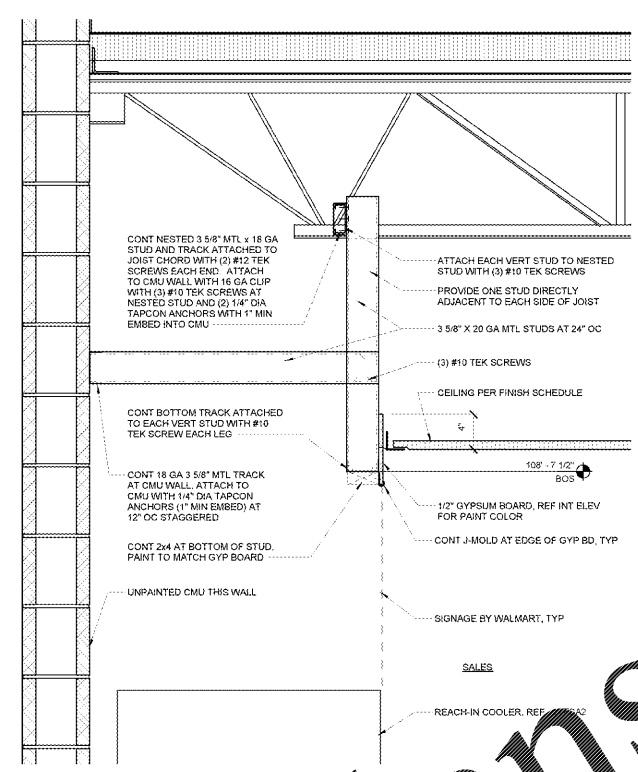
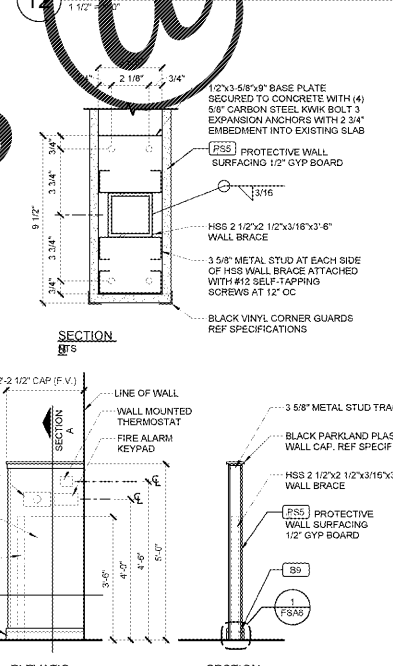
13 PARTITION ATTACHMENT PARALLEL TO JOIST
1 1/2" = 1'-0"



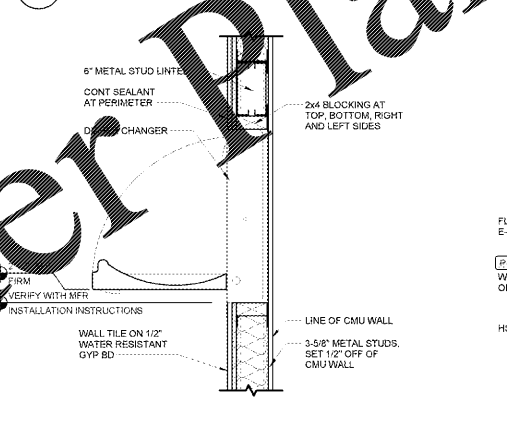
12 PARTITION ATTACHMENT PERPENDICULAR TO JOIST
1 1/2" = 1'-0"



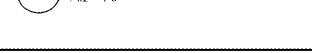
11 HALF WALL
1 1/2" = 1'-0"



15 SECTION ABOVE REACH-IN COOLER
1 1/2" = 1'-0"



14 NON-RATED WALL AT DIAPER STATION
1 1/2" = 1'-0"



Order Plans

022809 FSA6-PN 04/07/17