

SCHEDULE FINISH			
KEY	MARK	FINISH	DESCRIPTION
	ACT2	ACCOUSTICAL CEILING SYSTEM	WHITE
	BP	PLASTIC BASE	BLACK
	CT45	PORCELAIN WALL TILE	WHITE
	CT48	PORCELAIN FLOOR TILE	TAUPE GRADIENT
	CT48A	PORCELAIN COVE BASE	TAUPE GRADIENT
	EC1	NATURAL COLORED CONCRETE	BURNISHED
	EC2	NATURAL COLORED CONCRETE	BURNISHED
	E49	INTEGRAL COLOR EPS	MATCH "GALANTLET GRAY" SW #7019
	G4	GROUT	WHITE
	NRP	NON-FIBERGLASS REINFORCED PLASTIC	WHITE
	P6	PAINT	"SAFETY YELLOW" OSHA STANDARD
	P9	PAINT	"GALANTLET GRAY" SW #7019
	P130	PAINT	"OUTRAGEOUS GREEN" SW #6922
	P131	PAINT	WHITE FLOUR SW #7102
	P133	PAINT	PANTONE COLOR SYSTEM 287C
	P134	PAINT	"REPOSE GRAY" SW #7015
	PF14	PREFINISHED METAL	SLATE GRAY
	SS	STAINLESS STEEL	

FINISH SCHED MAT KEY			
MARK	DESCRIPTION	MARK	DESCRIPTION
A	CONCRETE	C	CMU
CW	COMPOSITE WOOD	F	EXPOSED STRUCTURE
G	GYP SUM BOARD	L	PLYWOOD
N	WALK-IN PANEL	T	GLASS-MAT BACKER MATERIAL

INSECT CONTROL UNIT LEGEND			
TYPE	TOTAL	D	
D	2		

- FINISH SCHEDULE NOTES:**
- PAINT EXPOSED STRUCTURE AND DECK AS INDICATED.
 - PAINT SALES FLOOR SUPPLY AND/OR RETURN GRILLES IN GYPSUM WALLS TO MATCH ADJACENT WALLS. PAINT EXPOSED CONDUIT AT SALES FLOOR TO MATCH ADJACENT WALLS.
 - PATTERN AT WALL AND FLOOR TILE. REF ELEVATIONS AND FLOOR FINISH PLAN.
 - PROVIDE HEAVY DUTY HOLD DOWN CLIPS AT ALL CEILING TILE.
 - PROVIDE CONTINUOUS SILICONE CAULK BEAD WITH FINGER COVE AT FLOOR/WALL JUNCTURE.
 - SUPPLY AND RETURN GRILLES IN WALLS AND CEILINGS TO REMAIN MILL FINISH WHITE.
 - NOT USED.
 - OMIT GYP BOARD FURRING ON CMU WALL BELOW CEILING AT POS COUNTER. REF ELEVATION.
- DOOR SCHEDULE NOTES:**
- AND 2 NOT USED.
 - SIGNAGE: PROVIDE 1" HIGH LETTERS IN CONTRASTING COLORS TO BACKGROUND. TEXT TO READ "THIS DOOR TO REMAIN UNLOCKED DURING BUSINESS HOURS". SIGNAGE FURNISHED BY WALMART AND INSTALLED BY GENERAL CONTRACTOR.
 - GC TO CONSTRUCT GATE FROM PREFIN BLACK METAL FRAME AND COMPOSITE WOOD MATERIALS PER DETAIL 7-FSA2. ROSEWOOD COLOR IS INTERIOR. DO NOT PAINT.
 - THRU 17 NOT USED.
 - PROVIDE VENDOR WITH FIELD DIMENSION BETWEEN EQUIPMENT, MILLWORK AND/OR WALLS AFTER INSTALLATION.
 - 3" MIN CLEAR MOUTH.
 - DOORS TO BE FACTORY FINISH. DO NOT PAINT.
 - THRU 17 NOT USED.
 - METAL DOOR FRAMES VISIBLE TO CUSTOMER NOT IN EXTERIOR WALLS TO RECEIVE EPOXY PAINT.

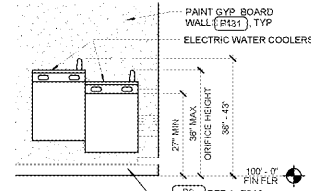
ROOM FINISH SCHEDULE																		
RM #	PLAN REFERENCE ORIENTATION	FLOOR FINISH	WALL				CEILINGS				CEILING HEIGHT	NOTES						
			BASE	MAT	FINISH	FINISH	MAT	FINISH	MAT	FINISH								
850	SALES	EC1	BP	G, G	P131	BP	G	P131	BP	G	P131	P130	C	ACT2	P131	8'-10"	2, 4, 8	
851	TOILET	CT48, G4	CT48A, G4	G, T	CT45, G4, P131	CT48A, G4	G, T	CT45, G4, P131	CT48A, G4	G, T	CT45, G4, P131	CT45, G4	G, T	CT45, G4, P131	F	P131	8'-0"	3, 5, 9
852	EQUIPMENT	EC2	BP	G	NRP, P131												1, 5, 6	
855	UTILITY ENCLOSURE			CW														

DOOR AND FRAME SCHEDULE																		
MARK	ROOM NAME	DOOR TYPE	MATERIAL	DOOR COLOR	QTY	NOMINAL SIZE			GLASS	FRAME TYPE	FRAME MATERIAL	FRAME COLOR	HEAD	JAMB	THRESHOLD	FIRE RATING (INSTANCE)	NOTES	MARK
						W	H	T										
850 A	SALES	D	ALUM		1	7'-0"	7'-0"		TEMPERED	ALUM								850 A
851 A	TOILET	F	HM-STL	P131	1	3'-0"	7'-0"	1-3/4"		HM-STL	P131		14	13				851 A
852 A	EQUIPMENT	F	HM-STL	P131	1	3'-0"	7'-0"	1-3/4"		HM-STL	P131		14	13				852 A
855 A	UTILITY ENCLOSURE	V	COMP-WD		1	3'-0"	6'-9-1/2"			MFL	BLACK							855 A

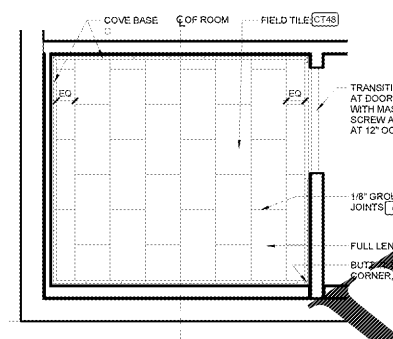
- SHEET NOTES**
- REFER TO MEP FOR MORE INFORMATION. REF SHEET F516 FOR EQUIPMENT ITEMS (XXXX) NOT SCHEDULED HERE.
 - 2A-429C MINIMUM RATED FIRE EXTINGUISHERS SHALL BE PROVIDED BY G.C. IN ACCORDANCE W/ NFPA 10. FIRE EXTINGUISHER LOCATIONS SHALL BE APPROVED BY THE OFFICE OF THE FIRE MARSHAL PRIOR TO OCCUPANCY.
 - INTERIOR PLAN DIMENSIONS ARE TO FACE OF STUD / CMU UNDO.
 - PROVIDE BATT INSULATION IN TOILET ROOM PARTITIONS AND 1/2" WATER RESISTANT GYP BOARD BEHIND ALL NRP BOARD.
 - SEAL PERIMETER OF LAVATORY AND TOILET TO FLOORS AND WALLS.
 - REF SHEET FSA1.1 FOR TOILET SYMBOLS AND SIGNAGE.
 - ALL EXPOSED CONCRETE TO RECEIVE FINISH. REF SPECIFICATION SECTION 03362 SALES FLOOR TO RECEIVE BURNISH.
 - REFERENCE SHEET FOR PARTITIONING INFORMATION.

FUEL STATION FIXTURE LEGEND			
NO.	QTY	DESCRIPTION	NOTES
D017	1	COMMERCIAL MICROWAVE OVEN	10
M3027	1	WIRE STORAGE RACK (18X48) - 4 SHELVES	12
M3027A	2	WIRE STORAGE RACK (18X36) - 4 SHELVES	12
M3035	1	ICE MERCHANDISER (73IN)	10
M3037	1	ICEE MACHINE	10
M3038	1	ICE MAKER WATER FILTER	10
M3039	1	BEVERAGE MACHINE WATER FILTER	10
M3042	1	DUAL COFFEE BREWER	10
M3045	1	HOT BEVERAGE DISPENSER	10
M3051	3	REACH-IN COOLER (SELF-CONTAINED) 3 DOOR	10
M3059	1	ICE TEA DISPENSER	10
M3064	1	DUAL COFFEE WARMER WITH STAND	10
M3066	1	SOFT DRINK AND ICE DISPENSER	10
M3079	3	CLIP DISPENSER	10
M3090C	1	WALL MOUNTED WARE (SPRIT 12X14IN) SHELVEING (14X36IN)	10
R00136.000	1	ICE CUBER (SELF-CONTAINED) (SCOTSMAN) (35X20X18)	10
S5004	1	HAND SINK 16X14 (14X10) WALL MOUNTED WITH 1/2" CLEARANCE	8
S5026	1	3-COMPARTMENT 24X9 (12X18) WITH 12IN DEPTH	2

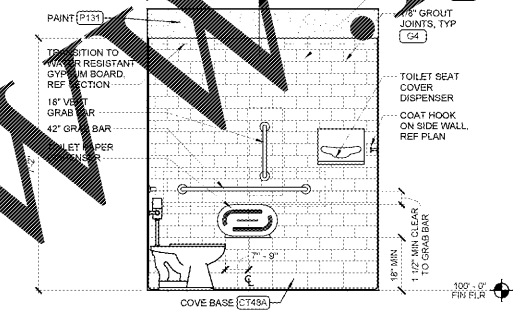
- FUEL STATION FIXTURE GENERAL NOTES**
- EQUIPMENT IS SUPPLIED BY WALMART. CONTRACTOR TO MAKE FINAL UTILTY CONNECTIONS. GENERAL CONTRACTOR TO MAKE FINAL UTILTY CONNECTIONS.
 - UNLESS NOTED OTHERWISE, REFERENCE SPECIFICATIONS FOR REFRIGERATED AND HOT DISPLAY CASES FOR SUPPLY BY, INSTALLED BY, AND FINAL CONNECTION BY.
 - REFERENCE SPECIFICATIONS FOR MANUFACTURER AND MODEL NUMBERS NOT LISTED IN EQUIPMENT LEGENDS.
 - WALMART TO SUPPLY FIXTURES BY WIN-HOLT.
- FUEL STATION FIXTURE NOTES**
- NOT USED.
 - GENERAL CONTRACTOR TO INSTALL WALMART FURNISHED SOAP AND PAPER TOWEL DISPENSER. REF INTERIOR ELEVATION FOR MOUNTING LOCATION.
 - NOT USED.
 - EQUIPMENT SUPPLIED AND INSTALLED BY EQUIPMENT SUPPLIER, WITH FINAL CONNECTION BY EQUIPMENT SUPPLIER.
 - EQUIPMENT INSTALLED BY EQUIPMENT SUPPLIER.
 - EQUIPMENT INSTALLED BY WALMART.



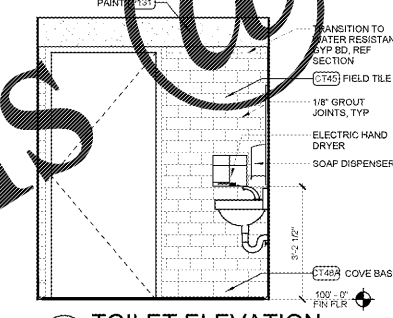
6A EWC ELEVATION
1/2" = 1'-0"
1 FSA5



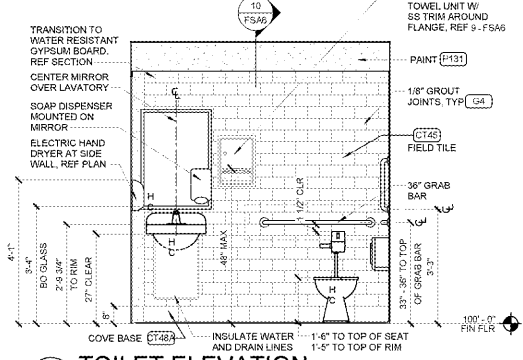
9 TOILET FLOOR FINISH PLAN
1/2" = 1'-0"



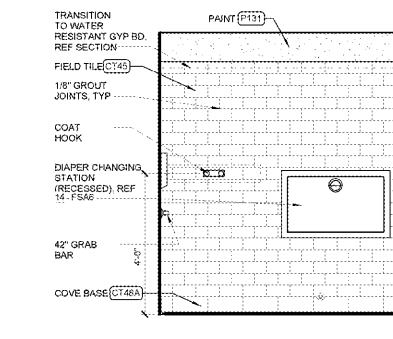
6 TOILET ELEVATION
1/2" = 1'-0"
2 FSA5



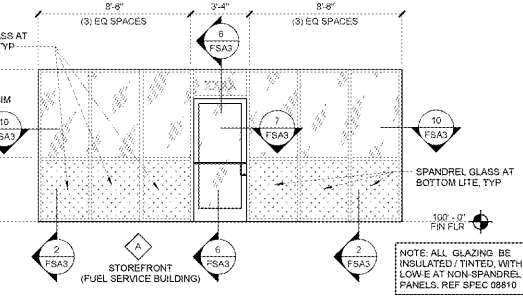
8 TOILET ELEVATION
1/2" = 1'-0"
2 FSA5



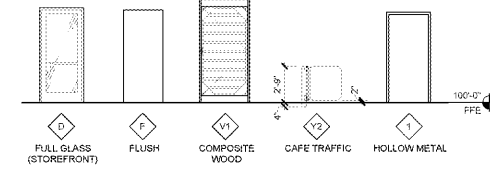
5 TOILET ELEVATION
1/2" = 1'-0"
2 FSA5



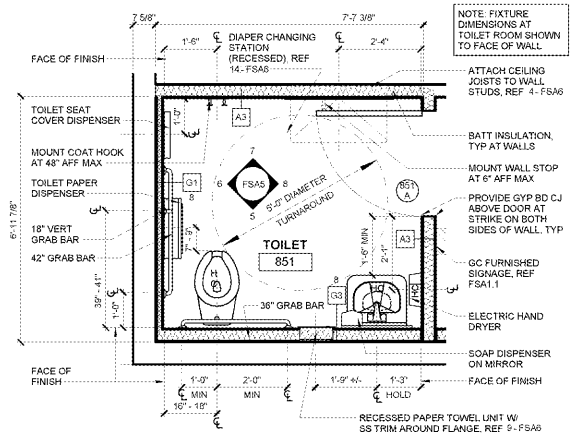
7 TOILET ELEVATION
1/2" = 1'-0"
2 FSA5



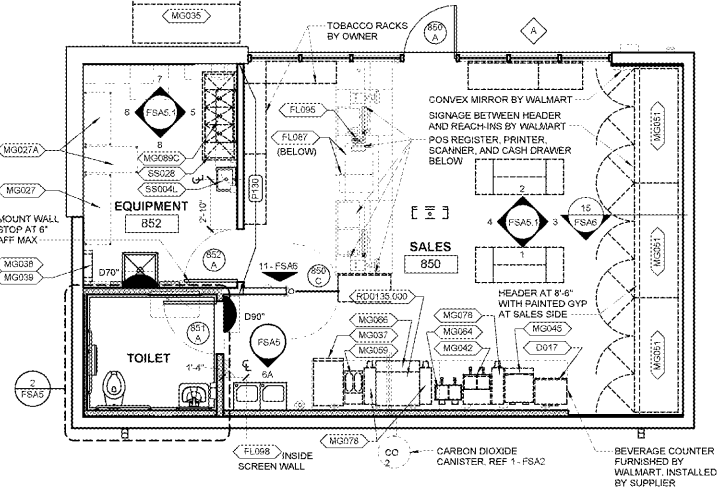
4 WINDOW TYPES
1/4" = 1'-0"



3 DOOR TYPES
3/16" = 1'-0"



2 ENLARGED TOILET PLAN
1/2" = 1'-0"
1 FSA2



1 FIXTURE PLAN
1/4" = 1'-0"
3 FSA1

Walmart
Apopka, FL
STORE NO: 6894-00
JOB NUMBER: 09715-006 | PHOTO

Walmart
Apopka, FL
STORE NO: 6894-00
JOB NUMBER: 09715-006 | PHOTO

ISSUE BLOCK

NO.	DATE	DESCRIPTION

CHECKED BY: MMA
DRAWN BY: MMA
FILE NAME: 740R-FSA5
PROTO CYCLE: 021017
DOCUMENT DATE: 04/07/17

BID SET NOT FOR CONSTRUCTION

FIXTURE PLAN ELEVATIONS AND SCHEDULES

SHEET: FSA5

Order Plans @