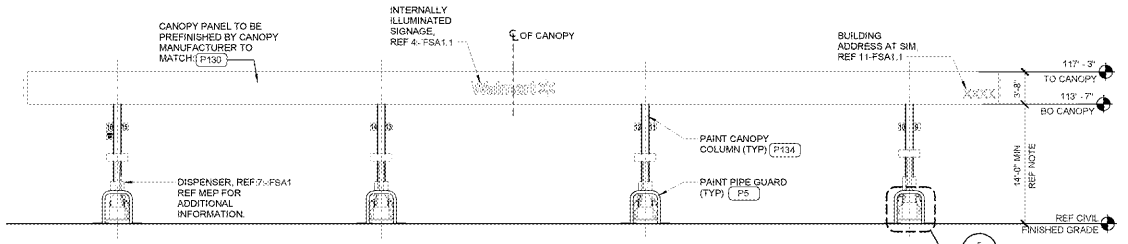
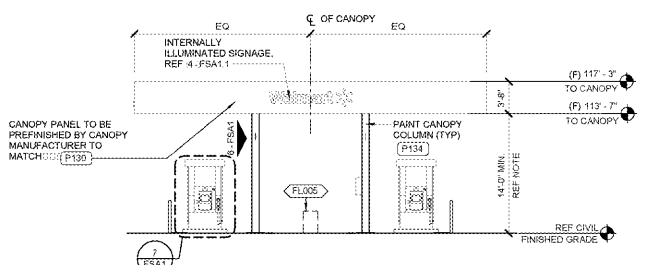


COLOR LEGEND		SHEET NOTES	
F134	STEEL PIPE GUARD - 4" W X 74" H	1.	REFER TO MEP FOR ADDITIONAL INFORMATION. REF SHEET F816 FOR EQUIPMENT ITEMS (XXXX) NOT SCHEDULED ON FSA1.
P5	SAFETY YELLOW CONIA STANDARD	2.	40B/C 13 LB MINIMUM RATED FIRE EXTINGUISHERS SHALL BE PROVIDED BY G.C. IN ACCORDANCE WITH NFPA 10. FIRE EXTINGUISHER LOCATIONS AND SIZE SHALL BE APPROVED BY THE OFFICE OF THE FIRE MARSHAL PRIOR TO OCCUPANCY.
F130	OUTRAGEOUS GREEN SW #6922	3.	ALL SIGNAGE MOUNTED ON CANOPY FASCIA (INCLUDING PRICE SIGN) IS FURNISHED AND INSTALLED BY WAL-MART.
F134	TREPOUSE GRAY SW #7015	4.	REFER TO CANOPY MANUFACTURER DRAWINGS FOR MORE INFORMATION.
		5.	SPOT GRADES INDICATE RIM OF MANHOLE 1" ABOVE SURROUNDING GRADE. FIELD VERIFY SLOPE CONCRETE AWAY FROM MANHOLE AT MAXIMUM 14" PER FOOT. REF MEP.

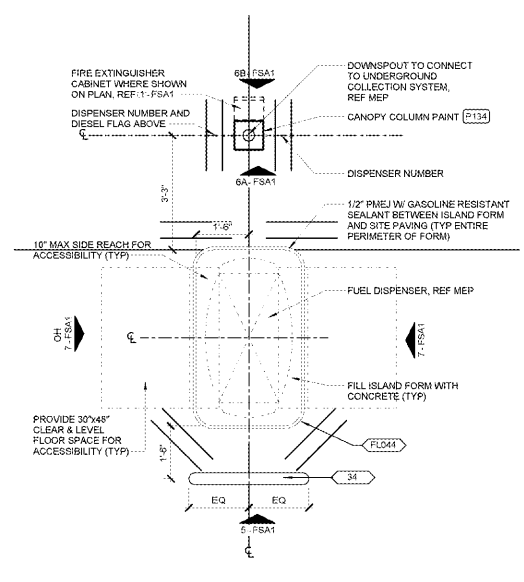
WAL-MART
 STORE NO: 6894-00
 APOPKA, FL
 997-61-006 | PHOTO
 VMMB-740R
 JOB NUMBER



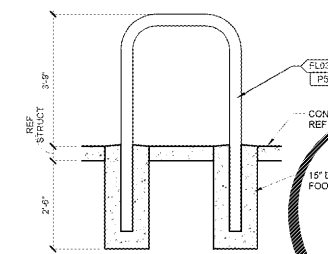
2 FRONT AND BACK ELEVATION
 1/8" = 1'-0"
 1 FSA1



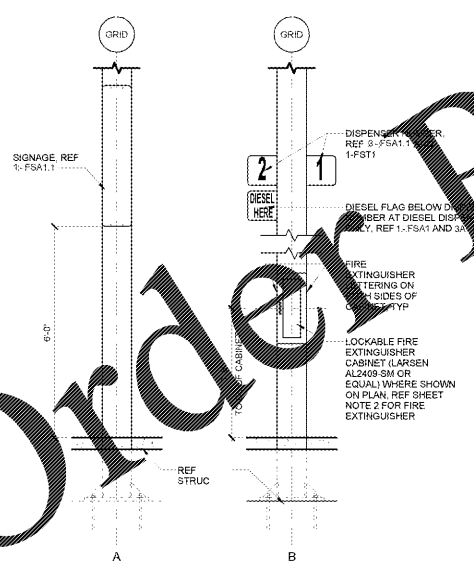
3 SIDE ELEVATION
 1/8" = 1'-0"
 1 FSA1



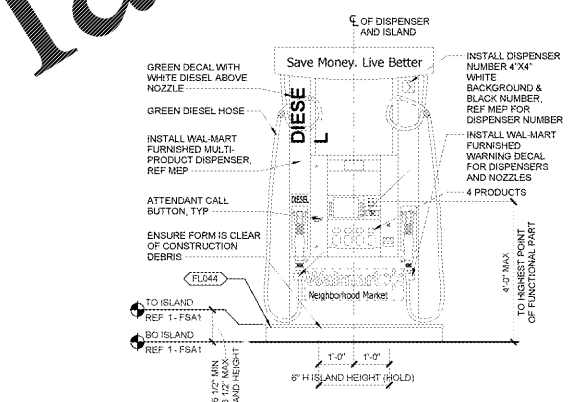
4 DISPENSER ISLAND PLAN
 1/2" = 1'-0"
 1 FSA1



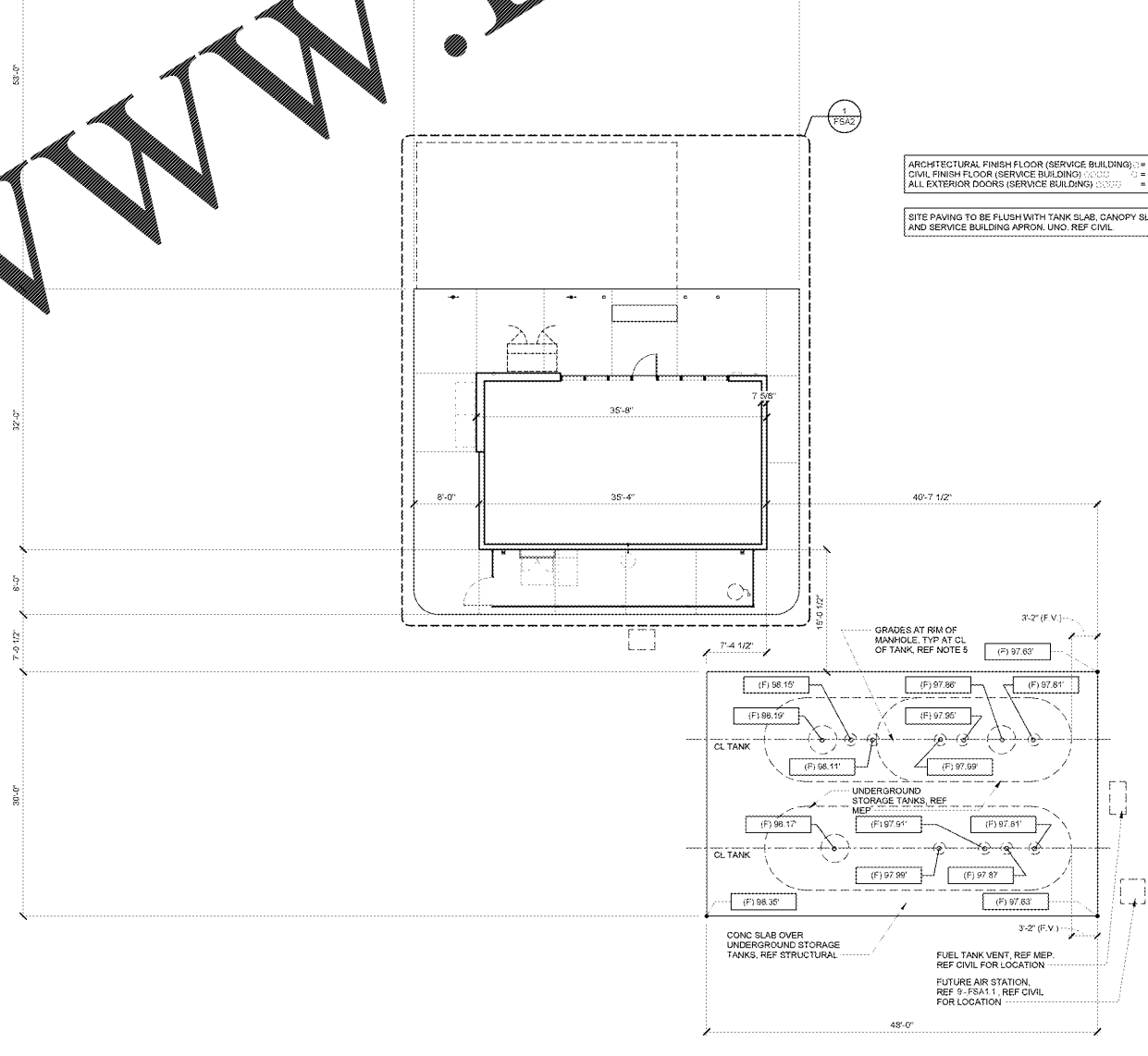
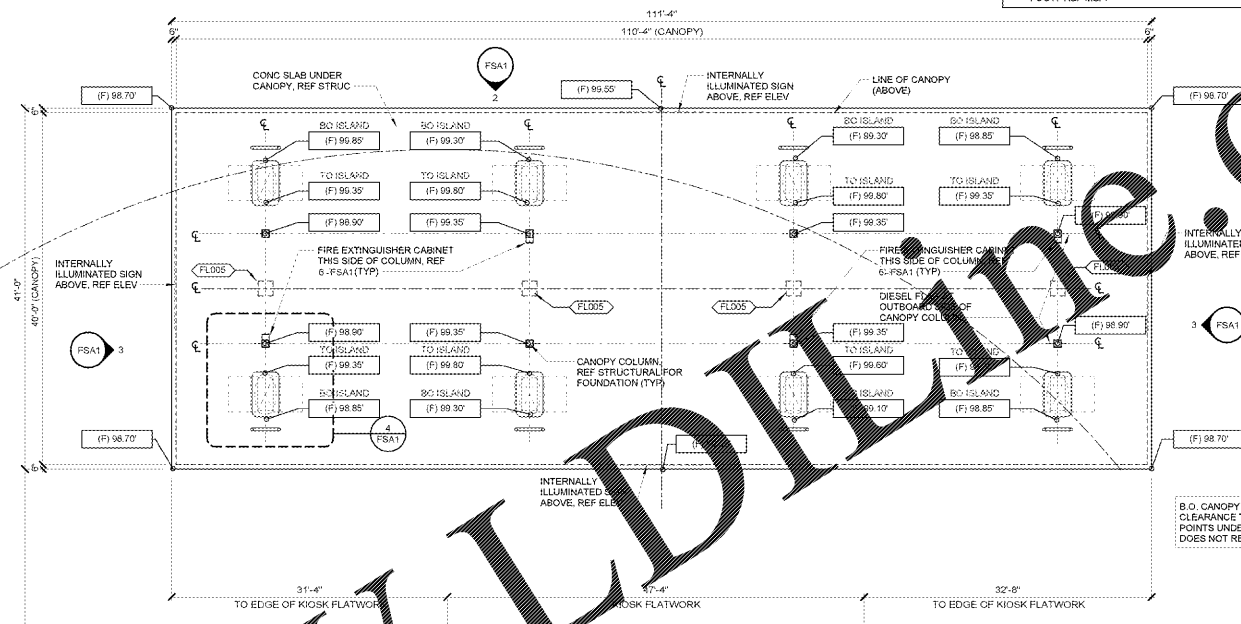
5 PIPE GUARD
 1/2" = 1'-0"
 2 FSA1



6 COLUMN ELEVATIONS
 1/2" = 1'-0"
 1 FSA1



7 DIESEL AT ENDS (TYP) (SIM @ UNLEADED)
 1/2" = 1'-0"
 3 FSA1



1 OVERALL PLAN
 1/8" = 1'-0"
 2 FSA2

ARCHITECTURAL FINISH FLOOR (SERVICE BUILDING) = (F) 100.00
 CIVIL FINISH FLOOR (SERVICE BUILDING) = (F) 105.10
 ALL EXTERIOR DOORS (SERVICE BUILDING) = (F) 100.00

SITE PAVING TO BE FLUSH WITH TANK SLAB, CANOPY SLAB, AND SERVICE BUILDING APRON. UNO. REF CIVIL

STIPULATION FOR THE...
 CONSULTANTS

WAL-MART
 Apopka, FL
 STORE NO: 6894-00
 997-61-006 | PHOTO
 VMMB-740R
 JOB NUMBER

ISSUE BLOCK

CHECKED BY: MMA
 DRAWN BY: MMA
 FILE NAME: 740R-FSA1
 PROTO CYCLE: 021017
 DOCUMENT DATE: 04/27/17

BID SET NOT FOR CONSTRUCTION

CANOPY
 SHEET: FSA1

Order Plans @

WWW.LDLINE.COM