

SANITARY SEWER SCHEDULE									
STRUCTURE NUMBER	STRUCTURE TYPE	RIM ELEV.	DOWNSTREAM STRUCTURE	INVERTS IN	INVERTS OUT	DOWNSTREAM PIPE LENGTH	PIPE SIZE/MATERIAL	SLOPE	
SAN-1	8" CLEANOUT	101.85	SAN-2	96.57 SW	96.57 SW	31.20'	8" PVC	0.96%	
SAN-2	TYPE I MH	102.72	SAN-3	90.27 NE	92.50 NW	132.02'	8" PVC	0.39%	
SAN-3	TYPE I MH	99.86	SAN-4	91.98 SE	91.88 NE	290.08'	8" PVC	0.40%	
SAN-4	TYPE I MH	102.13	SAN-5	90.84 SW	90.74 NE	217.34'	8" PVC	0.40%	
SAN-5	TYPE I MH	104.80	SAN-6	89.87 SW	89.77 NE	99.06'	8" PVC	0.40%	
SAN-6	TYPE I MH	103.32	SAN-8	89.37 SW	88.58 N	177.75'	8" PVC	1.00%	
SAN-7	TYPE I MH	104.37	SAN-8	95.26 SE	95.72 NW	45.63'	8" PVC	1.00%	
SAN-8	EXISTING MH	97.32		96.80 S					
SAN-9	TYPE I MH	110.00	SAN-10	95.99 N	95.99 N	348.00'	8" PVC	0.75%	
SAN-10	TYPE I MH	105.14	SAN-5	93.38 S	93.28 NW	191.14'	8" PVC	1.00%	
SAN-11	TYPE I MH	105.00	SAN-10	93.72 SW	93.97 S	33.97'	8" PVC	1.00%	
SAN-12	6" CLEANOUT	104.87	SAN-7	99.90 SE	99.90 N	23.23'	6" PVC	0.90%	

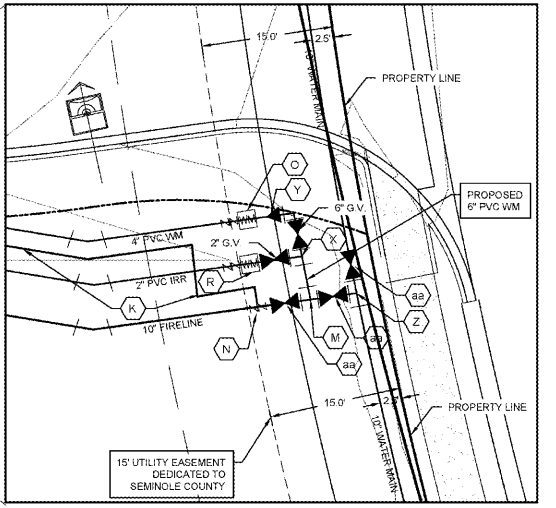
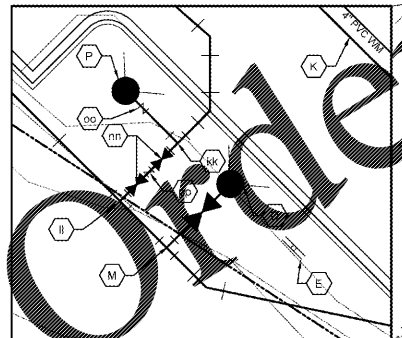
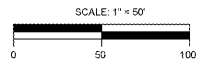
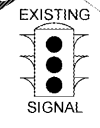
UTILITY LEGEND

- (A) PROPOSED ELECTRICAL CONNECTION TO EXISTING POLE, COORDINATE WITH DUKE ENERGY
- (B) ELECTRICAL TRANSFORMER WITH BOLLARD PROTECTION (SEE ARCH. MEP PLANS FOR EXACT LOCATION), COORDINATE WITH DUKE ENERGY
- (C) PRIMARY LINE TO TRANSFORMER, COORDINATE WITH DUKE ENERGY
- (D) PRIVATE FIRE HYDRANT ASSEMBLY (PAINT SILVER PER DETAIL ON PAGE C15)
- (E) FIRE LANE SIGN. FIRE LANE SIGNS SHALL BE INSTALLED ON OR ALONG A BOUNDARY OF ALL FIRE LANES. THE NUMBER, PLACEMENT AND DESIGN OF SIGNS SHALL BE DETERMINED BY THE FFPC OR THE FIRE MARSHAL. (NFPA 1, 18.2.3 FL). SEE SIGN DETAIL, THIS SHEET.
- (F) 4" DOMESTIC WATER MAIN ENTRY (SEE ARCH. MEP PLANS FOR EXACT LOCATION)
- (G) FIRE LINE MAIN ENTRY. (SEE ARCH. MEP PLANS FOR EXACT LOCATION)
- (H) TELEPHONE SERVICE AND ENTRY (SEE ARCH. MEP PLANS FOR EXACT LOCATION)
- (I) 8"x10" TEE. (8" TAP INTO EXISTING WATER MAIN)
- (J) GREASE INTERCEPTOR (REFER TO MEP/STRUC PLANS). MINIMUM SIZE TANK 750 GALLONS PER FAC 64E-8.
- (K) 1" CONDUIT FOR FIRE PROTECTION TAMPER SWITCH
- (L) PULL BOX WITH TWO (2) 2" CONDUITS FOR FIBER OPTIC AND TELEPHONE
- (M) 10"x6" TEE
- (N) 8" AMES 3000SS DDCV
- (O) 4" DOMESTIC WATER SERVICE AND 1-1/2" METER (BADGER DISC SERIES PROVIDED BY COUNTY & INSTALLED BY CONTRACTOR) WITH ABOVE GRADE 4" WATTS LF909MI BFP
- (P) 2" AMES 3000SS DDCV DETECTOR ASSEMBLY AND ABOVE GROUND FDC
- (Q) 2.5" DOMESTIC WATER SERVICE AND 1.5" METER (BADGER DISC SERIES PROVIDED BY COUNTY & INSTALLED BY CONTRACTOR) WITH ABOVE GRADE 1.5" WATTS BFP
- (R) 2" IRRIGATION SERVICE AND 2" IRRIGATION METER (BADGER DISC SERIES PROVIDED BY COUNTY & INSTALLED BY CONTRACTOR) WITH ABOVE GRADE 2" WATTS LF909MI BFP
- (S) 1.5" DOMESTIC WATER MAIN ENTRY FOR FUEL STATION (SEE ARCH. MEP PLANS FOR EXACT LOCATION)
- (T) FIRE LANE MARKING. SEE FIRE LANE MARKING NOTES.
- (U) 2" IRRIGATION CONDUIT FROM IRRIGATION CLOSET TO IRRIGATION CONTROL.
- (V) IRRIGATION CONTROLLER
- (W) 2" BLOW OUT FOR FUTURE LOTS
- (X) 6"x2" TEE
- (Y) 6"x4" REDUCER
- (Z) 10"x10" TEE
- (aa) 10" GATE VALVE
- (ab) 2" SERVICE TAP
- (ac) AIR VENT PAD FOR FUEL TANKS
- (ad) 1" AIR CONDUIT FOR AIR STATION
- (ae) ELECTRICAL ENTRY
- (af) SITE LIGHTING ENTRY
- (ag) ONE 1" & TWO 2" CONDUITS FOR FUTURE PICKUP KIOSK
- (ah) TWO 2" CONDUITS FOR FIBER OPTIC CABLES AND TELEPHONE LINE ENTRY
- (ii) TWO (2) 2" CONDUITS FOR 400v SERVICE TO FUEL STATION
- (kk) 12"x6" TEE
- (ll) 10"x12" TEE
- (mm) 12" GATE VALVE
- (nn) 8" CHECK VALVE IN PIT
- (pp) 12" CHECK VALVE

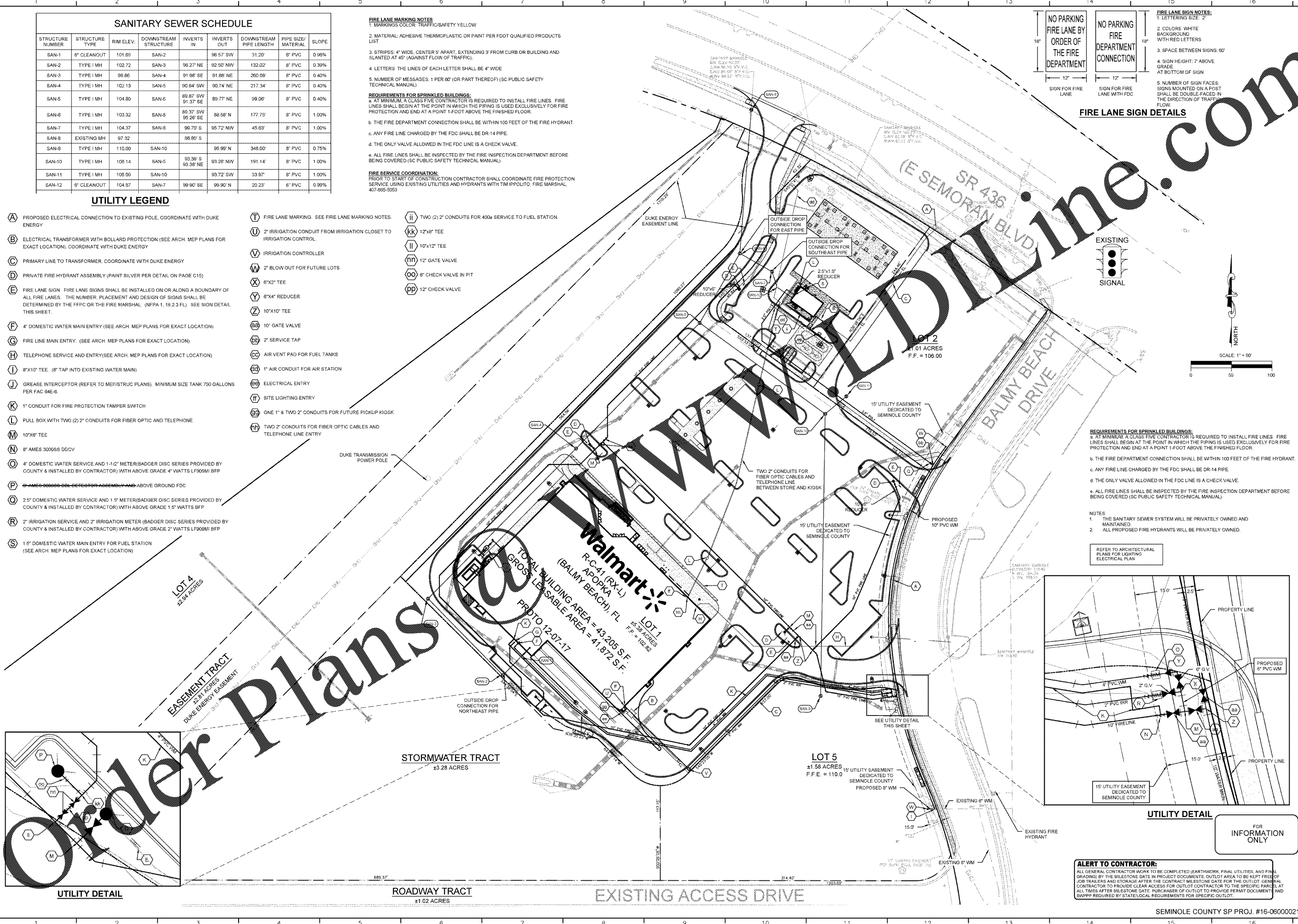
FIRE LANE MARKING NOTES:
 1. MARKINGS COLOR: TRAFFIC/SAFETY YELLOW
 2. MATERIAL: ADHESIVE THERMOPLASTIC OR PAINT PER FDOT QUALIFIED PRODUCTS LIST
 3. STRIPES: 4" WIDE, CENTER 5' APART, EXTENDING 3' FROM CURB OR BUILDING AND SLANTED AT 45° (AGAINST FLOW OF TRAFFIC).
 4. LETTERS: THE LINES OF EACH LETTER SHALL BE 4" WIDE
 5. NUMBER OF MESSAGES: 1 PER 60' (OR PART THEREOF) (SC PUBLIC SAFETY TECHNICAL MANUAL)
REQUIREMENTS FOR SPRINKLED BUILDINGS:
 a. AT MINIMUM A CLASS FIVE CONTRACTOR IS REQUIRED TO INSTALL FIRE LINES. FIRE LINES SHALL BEGIN AT THE POINT IN WHICH THE PIPING IS USED EXCLUSIVELY FOR FIRE PROTECTION AND END AT A POINT 1-FOOT ABOVE THE FINISHED FLOOR.
 b. THE FIRE DEPARTMENT CONNECTION SHALL BE WITHIN 100 FEET OF THE FIRE HYDRANT
 c. ANY FIRE LINE CHARGED BY THE FDC SHALL BE DR-14 PIPE.
 d. THE ONLY VALVE ALLOWED IN THE FDC LINE IS A CHECK VALVE.
 e. ALL FIRE LINES SHALL BE INSPECTED BY THE FIRE INSPECTION DEPARTMENT BEFORE BEING COVERED (SC PUBLIC SAFETY TECHNICAL MANUAL).
FIRE SERVICE COORDINATION:
 PRIOR TO START OF CONSTRUCTION CONTRACTOR SHALL COORDINATE FIRE PROTECTION SERVICE USING EXISTING UTILITIES AND HYDRANTS WITH TIM IPPOLITO, FIRE MARSHAL, 407-685-5053



FIRE LANE SIGN NOTES:
 1. LETTERING SIZE: 2"
 2. COLORS: WHITE BACKGROUND WITH RED LETTERS
 3. SPACE BETWEEN SIGNS: 60"
 4. SIGN HEIGHT: 7' ABOVE GRADE AT BOTTOM OF SIGN
 5. NUMBER OF SIGN FACES: SIGNS MOUNTED ON A POST SHALL BE DOUBLE-FACED IN THE DIRECTION OF TRAFFIC FLOW



ALERT TO CONTRACTOR:
 ALL GENERAL CONTRACTOR WORK TO BE COMPLETED (EARTHWORK, FINAL UTILITIES, AND FINAL GRADING) BY THE MILESTONE DATE IN PROJECT DOCUMENTS. OUTLOT AREA TO BE KEPT FREE OF JOB TRAILERS AND STORAGE AFTER THE CONTRACT MILESTONE DATE FOR THE OUTLOT. GENERAL CONTRACTOR TO PROVIDE CLEAR ACCESS FOR OUTLOT CONTRACTOR TO THE SPECIFIC PARCEL AT ALL TIMES AFTER MILESTONE DATE. PURCHASER OF OUTLOT TO PROVIDE PERMIT DOCUMENT AND SWPPP REQUIRED BY STATE/LOCAL REQUIREMENTS FOR SPECIFIC OUTLOT.



Walmart Neighborhood Market
 #6894-NEW-FL-Apopka (Balm Beach)
 BALMY BEACH DRIVE, SEMINOLE COUNTY, FLORIDA
 TAURUS CD 186 BALMY BEACH FL LP

1979-2016
LOGICARE
 Small Business Enterprise

RECORD DRAWING
 THIS RECORD DRAWING IS BASED ON THE RECORDS OF THE LIMITED LIABILITY CORPORATION AND IS NOT A GUARANTEE OF THE ACCURACY OF THE INFORMATION CONTAINED HEREIN. THE ENGINEER HAS CONDUCTED VISUAL INSPECTIONS OF THE RECORDS AND HAS FOUND THEM TO BE CORRECT AND COMPLETE TO THE BEST OF HIS KNOWLEDGE AND BELIEF.

ENGINEER
 JASON M. COLLIER, P.E.
 DATE: APR. 11, 2017

DESIGNER: J.M.S.
 CHECKED: J.P.M.

NO. DATE REVISIONS

UTILITY PLAN

SHEET C08

SEMINOLE COUNTY SP PROJ. #16-06000021