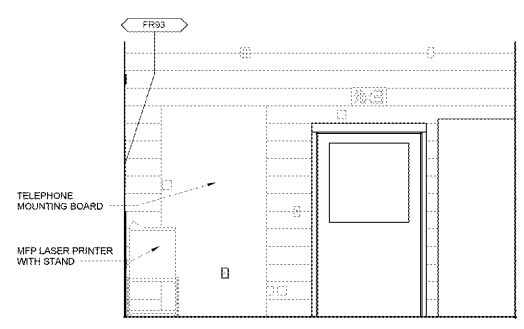


SHEET NOTES

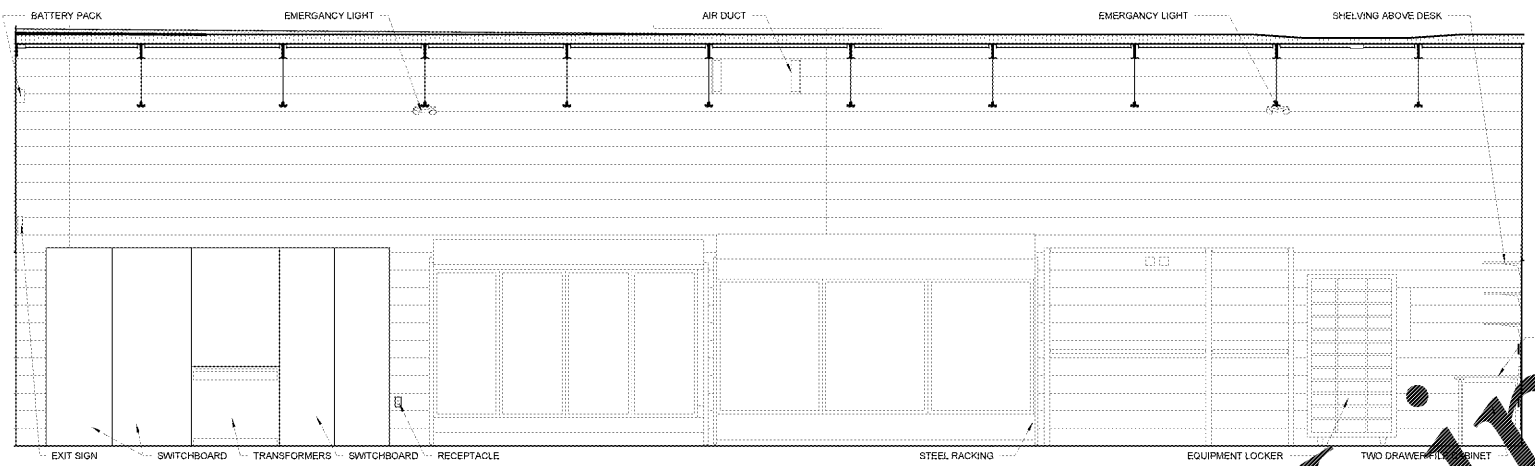
1. FOOD SERVICE EQUIPMENT INSTALLED BY GC UNO ON FIXTURE PLAN, REF 1-A1.1.
2. LOCATE ALL RACKS LESS THAN 44" DEEP 3" FROM WALLS AND COLUMNS UNLESS NOTED OTHERWISE.
3. EQUIPMENT LOCATIONS ARE DESIGNED TO MEET HEALTH REQUIREMENTS, OPERATIONS, AND SAFETY COMPLIANCE. ANY CHANGES TO LAYOUT OR EQUIPMENT MUST BE DIRECTED TO THE WALMART DESIGN TEAM.

FURNISHING LEGEND

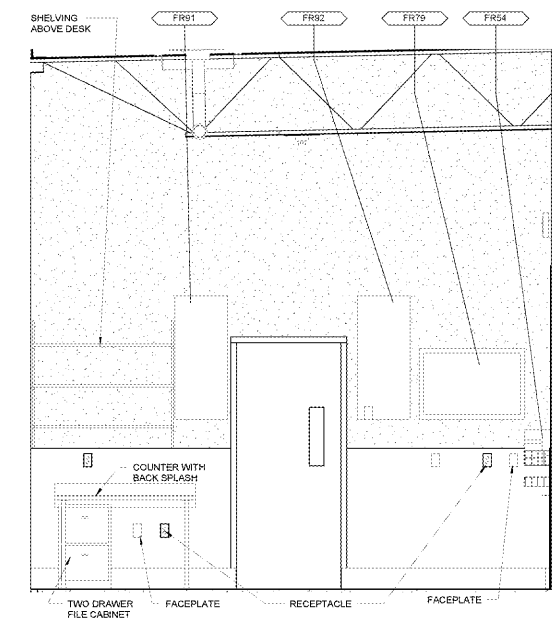
FR1	TRASH CAN
FR2	WASHING HANDS SIGN
FR3	DISPOSAL STOP SIGN
FR4	FOOD SAFETY SIGN
FR6	KNIFE HOLDER
FR7	PRODUCE ORANGES
FR9	DELI COOLING PRODUCE SIGN
FR10	ECO LAB TESTER PRODUCE SIGN
FR11	SANDWICH ASSEMBLY SIGN
FR12	SAUSAGE SIGN
FR15	OVERHAUL NET ST
FR14	MAP DISPENSER
FR16	MAP DISPENSER
FR17	TOILET PAPER
FR18	TOILET PAPER
FR20	TOILET PAPER
FR21	BRUSH HOLDER
FR22	BRUSH HOLDER
FR24	LEAN MATTERS SIGN
FR28	PRODUCE DAILY SIGN
FR29	TEMPERATURE MATTERS SIGN
FR30	LOOKS MATTER SIGN
FR31	DELI ART
FR32	BANERY ART
FR33	STORE CERTIFICATES
FR34	TRASH CART
FR36	LARGE ROUND TRASH BIN
FR37	CLEAN AND DIRTY MCP STORAGE
FR38	MOP BUCKETS
FR39	SLOWER
FR40	SHOPVAC
FR42	YELLOW TRASH CAN
FR43	ROTATION MATTERS SIGN
FR44	RECYCLE BINS
FR46	BASKETS
FR48	FLORAL BAGS
FR50	ORDER ONLINE SIGN
FR51	BULLETIN BOARD
FR52	BUFFER
FR54	SPILL STATION
FR55	HAZMAT KIT
FR59	EXTRA LARGE LADDER
FR61	SMALL LADDER
FR63	NEWS STAND
FR72	FLOOR SCRUBBER
FR73	TOTER RECYCLE
FR74	UMBRELLA BAGS
FR78	ALERT BOARD
FR79	BULLETIN BOARD
FR81	CUSTOMER SERVICE TV
FR82	EMERGENCY EYE WASH
FR83	EMERGENCY PROCEDURES
FR84	EXTINGUISHER DOWN ARROW
FR87	LARGE BULLETIN BOARD
FR88	MAGNETIC MOPS
FR91	PICKUP MANIFESTS
FR92	PICKUP OPERATIONS
FR93	PICKUP OUR PROMISE
FR100	RECALL INFORMATION
FR101	ROOF SYSTEM
FR102	SPILL CENTER SIGN
FR104	VESTIBULE FUEL PRICE
FR106	CASH SPEAKER
FR107	CASH MONITOR
FR108	BREAKROOM COFFEE
FR109	BREAKROOM MICROWAVE
FR110	TRAINING TV
FR113	PRODUCE MY WORK ALWAYS
FR114	PRODUCE MY WORK NEVER
FR119	FLOOR MAT
FR122	TRASH CAN



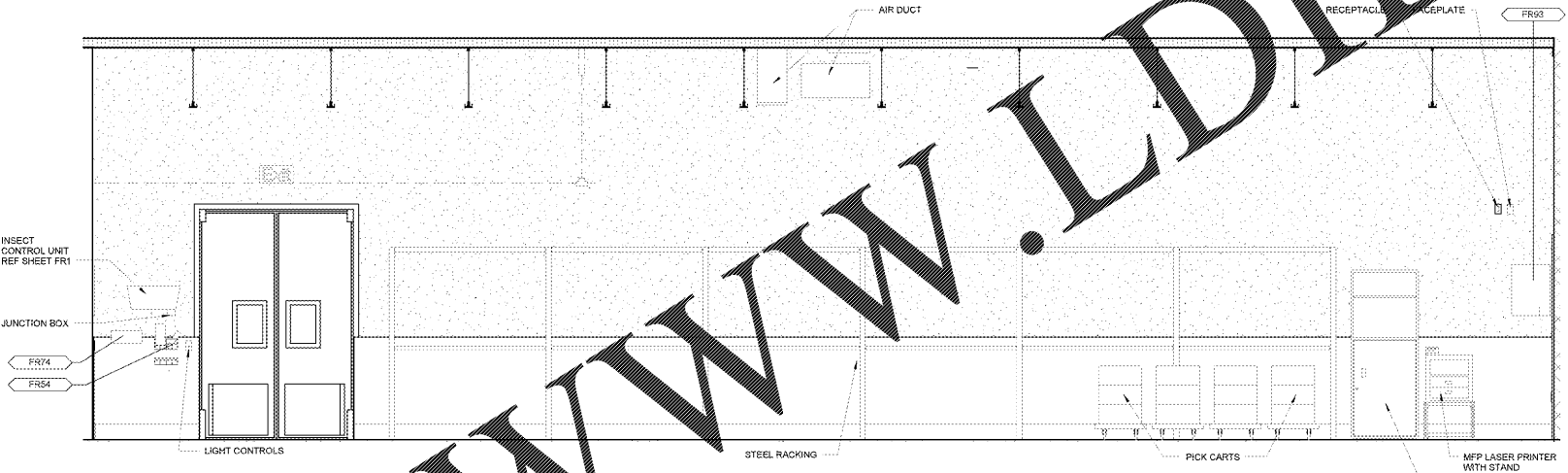
9 GROCERY STORAGE ELEVATION
3/8" = 1'-0"



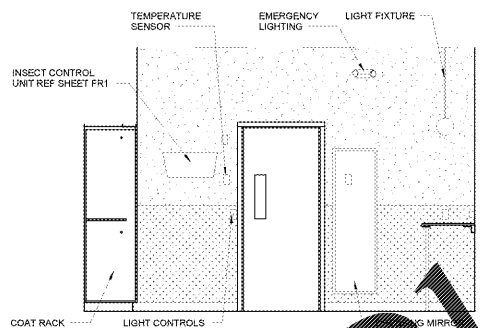
8 GROCERY STORAGE ELEVATION
3/8" = 1'-0"



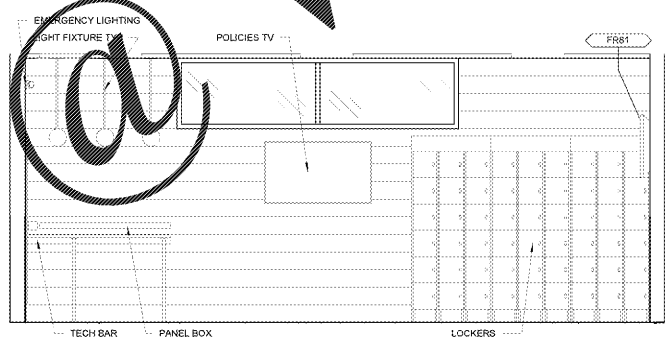
7 GROCERY STORAGE ELEVATION
1/2" = 1'-0"



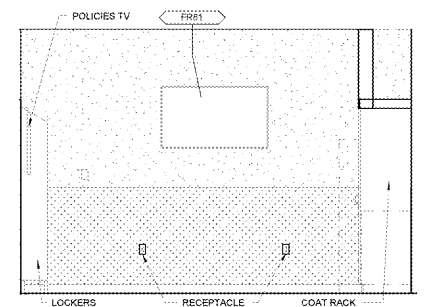
6 GROCERY STORAGE ELEVATION
3/8" = 1'-0"



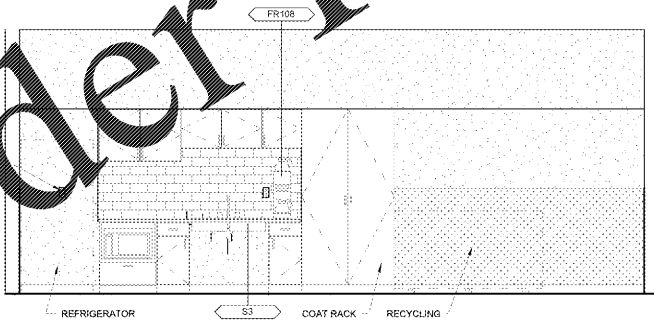
5 BREAK ROOM ELEVATION
3/8" = 1'-0"



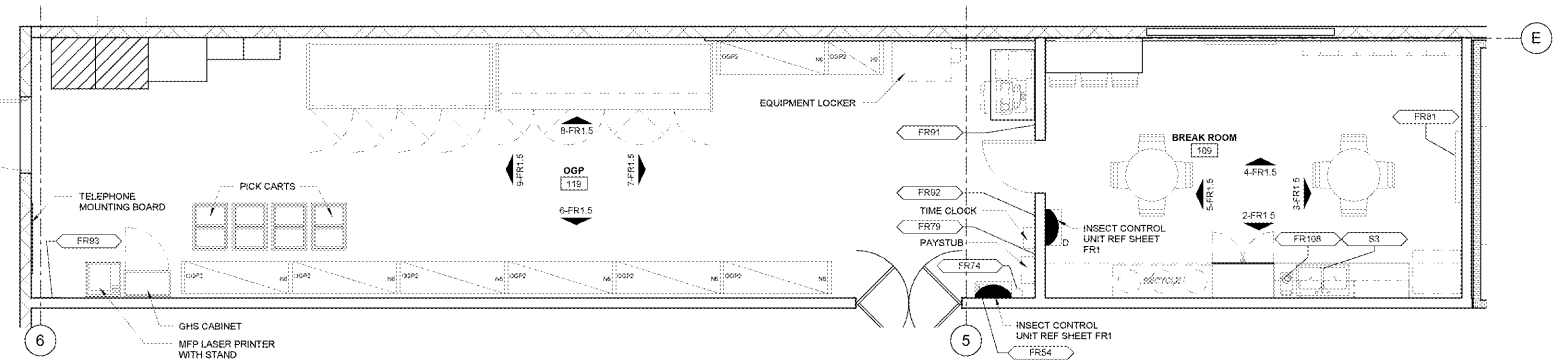
4 BREAK ROOM ELEVATION
3/8" = 1'-0"



3 BREAK ROOM ELEVATION
3/8" = 1'-0"



2 BREAK ROOM ELEVATION
3/8" = 1'-0"



1 ENLARGED BREAKROOM FIXTURE PLAN
1/4" = 1'-0"

Order Plans



STIPULATION FOR THE USER OF THIS DOCUMENT: THIS DOCUMENT IS THE PROPERTY OF JMA AND IS TO BE USED ONLY FOR THE PROJECT AND SITE SPECIFICALLY IDENTIFIED HEREIN. IT IS NOT TO BE REPRODUCED, COPIED, OR TRANSMITTED IN ANY FORM OR BY ANY MEANS, ELECTRONIC OR MECHANICAL, INCLUDING PHOTOCOPYING, RECORDING, OR BY ANY INFORMATION STORAGE AND RETRIEVAL SYSTEM, WITHOUT THE WRITTEN PERMISSION OF JMA.

CONSULTANTS

Walmart Neighborhood Market
APOPKA, FL
STORE NO: 6894-00
JOB NUMBER: 097-15-006 | PHOTO: 412

ISSUE BLOCK

NO.	DESCRIPTION

CHECKED BY: MMA
DRAWN BY: MMA
FILE NAME: 41_2_FR1.5
PROTO CYCLE: 102816
DOCUMENT DATE: 01/09/17

BID SET
NOT FOR
CONSTRUCTION

THIS SHEET IS INCLUDED FOR INFORMATIONAL PURPOSES ONLY AND IT IS NOT TO BE SIGNED

BREAKROOM - GROCERY STORAGE FF & E PLANS & ELEVATIONS (NOT IN PERMIT SET)

SHEET: FR1.5