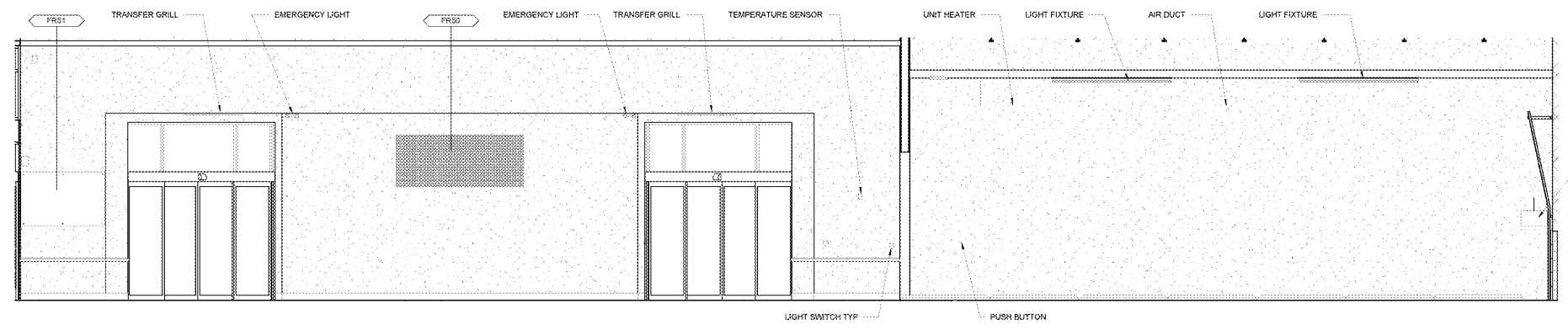


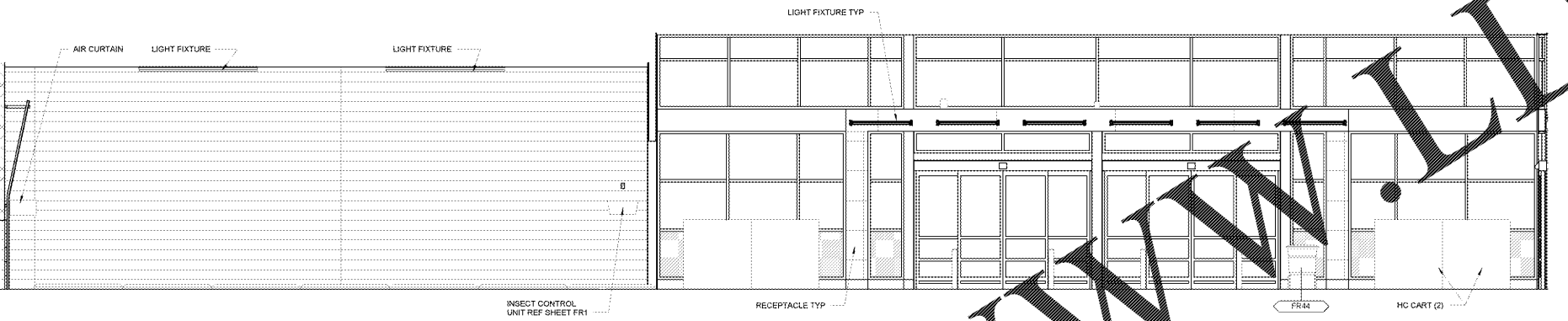
- 1. FOOD SERVICE EQUIPMENT INSTALLED BY GC UNO ON FIXTURE PLAN, REF 1-A1.1.
- 2. LOCATE ALL RACKS LESS THAN 44" DEEP 3" FROM WALLS AND COLUMNS UNLESS NOTED OTHERWISE.
- 3. EQUIPMENT LOCATIONS ARE DESIGNED TO MEET HEALTH REQUIREMENTS, OPERATIONS, AND SAFETY COMPLIANCE. ANY CHANGES TO LAYOUT OR EQUIPMENT MUST BE DIRECTED TO THE WALMART DESIGN TEAM.

**FURNISHING LEGEND**

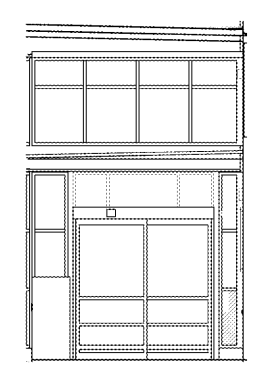
FR1	TRASH CAN
FR2	WASHING HANDS SIGN
FR3	DISPENSAL STOP SIGN
FR4	FOOD SAFETY SIGN
FR6	KNIFE HOLDER
FR7	PRODUCE ORANGES
FR9	DELI COOLING PRES SIGN
FR10	EGG LAB TESTER SIGN
FR11	SANDWICH ASSEMBLY SIGN
FR12	SANDWICH SIGN
FR13	SAUSAGE SIGN
FR14	CHEESE SIGN
FR16	CHEESE SIGN
FR17	SOFT DRINK DISPENSER
FR18	SOFT DRINK DISPENSER
FR20	WATER DISPENSER
FR21	BRUSH HOLDER
FR22	BRUSH HOLDER
FR24	LEAN MATTERS SIGN
FR25	PRODUCE DAILY SIGN
FR26	TEMPERATURE MATTERS SIGN
FR27	LOCKS MATTER SIGN
FR28	SOAP DISPENSER BY ECOLAB
FR29	COMPARTMENT LABELS BY ECOLAB
FR31	DELI ART
FR32	BAKERY ART
FR33	STORE CERTIFICATES
FR34	TRASH CART
FR36	LARGE ROUND TRASH BIN
FR37	CLEAN AND DIRTY MOP STORAGE
FR38	MOP BUCKETS
FR39	BLOWER
FR40	SHOPVAC
FR42	YELLOW TRASH CAN
FR43	ROTATION MATTERS SIGN
FR44	RECYCLE BINS
FR45	BASKETS
FR46	FLORAL BAGS
FR50	ORDER ONLINE SIGN
FR51	BULLETIN BOARD
FR52	SUFFER
FR54	SPILL STATION
FR55	HAZMAT KIT
FR59	EXTRA LARGE LADDER
FR61	SMALL LADDER
FR63	NEWS STAND
FR72	FLOOR SCRUBBER
FR73	TOTER RECYCLE
FR74	UMBRELLA BAGS
FR78	ALERT BOARD
FR79	BULLETIN BOARD
FR81	CUSTOMER SERVICE TV
FR82	EMERGENCY EYE WASH
FR83	EMERGENCY PROCEDURES
FR84	EXTINGUISHER DOWN ARROW
FR87	LARGE BULLETIN BOARD
FR86	MAGNETIC MARKERS
FR91	PICKUP MANIFESTS
FR92	PICKUP OPERATIONS
FR93	PICKUP OUR PROMISE
FR100	RECALL INFORMATION
FR101	ROOF SYSTEM
FR102	SPILL CENTER SIGN
FR104	VESTIBULE FUEL PRICE
FR106	CASH SPEAKER
FR107	CASH MONITOR
FR108	BREAKROOM COFFEE
FR109	BREAKROOM MICROWAVE
FR110	TRAINING TV
FR113	PRODUCE MY WORK ALWAYS
FR114	PRODUCE MY WORK NEVER
FR118	FLOOR MAT
FR122	TRASH CAN



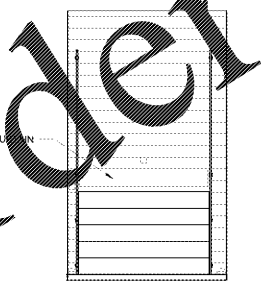
5 VESTIBULE ELEVATION  
1/4" = 1'-0"



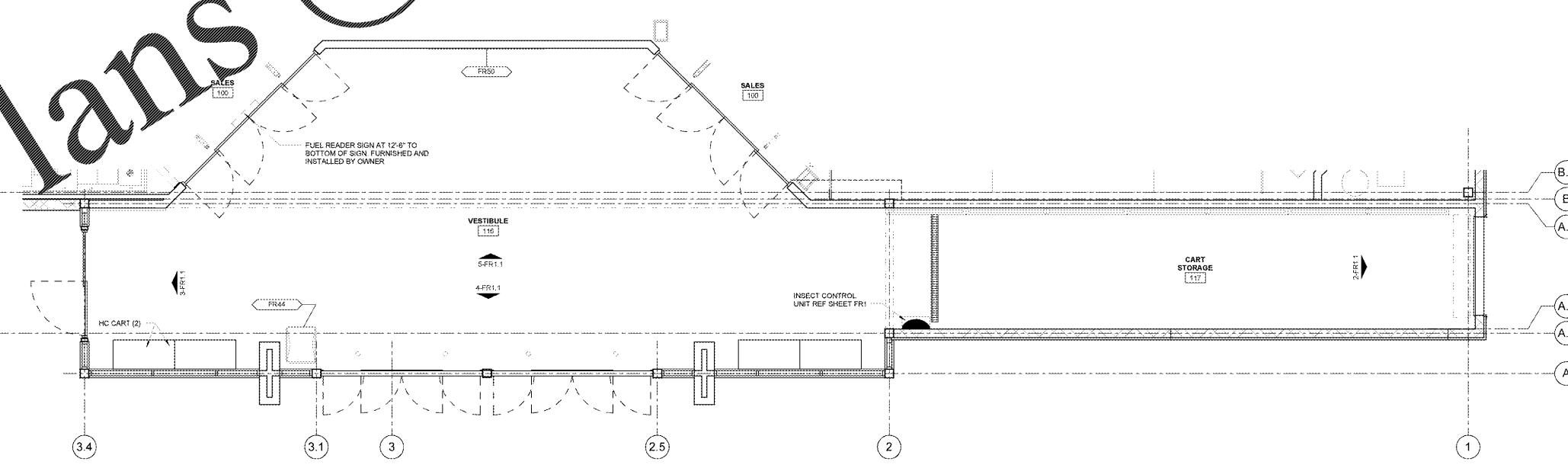
4 VESTIBULE ELEVATION  
1/4" = 1'-0"



3 VESTIBULE ELEVATION  
1/4" = 1'-0"



2 CART STORAGE ELEVATION  
1/4" = 1'-0"



1 ENLARGED VESTIBULE FIXTURE PLAN  
1/4" = 1'-0"

**Walmart** Neighborhood Market  
**APOPKA, FL**  
STORE NO: 0894-00  
997-16-006 | PHOTO  
412

**CONSULTANTS**

**STIPULATION FOR THE**

**MMA**  
MEMBERS: KYLE, NICHOLE, TRECIE AP  
EL, License No. A200817  
1732 918 2300 / 1732 918 2331

**ISSUE BLOCK**

CHECKED BY: MMA  
DRAWN BY: MMA  
FILE NAME: 41\_2\_FR1\_1  
PROTO CYCLE: 102816  
DOCUMENT DATE: 01/09/17

**BID SET  
NOT FOR  
CONSTRUCTION**

THIS SHEET IS INCLUDED  
FOR INFORMATIONAL  
PURPOSES ONLY AND IT  
IS NOT TO BE SIGNED

**VESTIBULE  
FF AND E  
PLANS AND  
ELEVATIONS  
(NOT IN  
PERMIT SET)**

**SHEET  
FR.1**