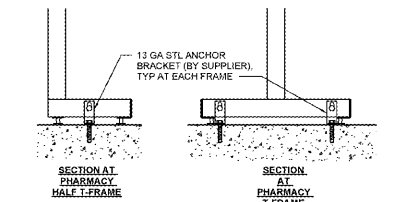


NOTE: HALF GONDOLAS SHALL BE ANCHORED TO WALL AS SHOWN TO SATISFY OWNER REQUIREMENTS. WALL ANCHORAGE IS NOT REQUIRED FOR SIBS/MC DESIGN OR CODE COMPLIANCE.

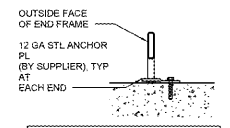
INSTALLATION NOTES:
 1. GAPS BETWEEN SHELVES SHALL NOT EXCEED 5/8\"/>

8 WALL ANCHOR AT HALF GONDOLA UPRIGHT



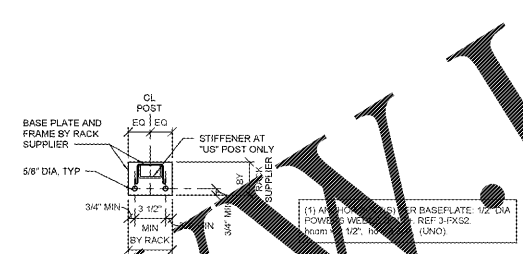
(1) ANCHOR BOLTS PER BRACKET: 3/8" DIA POWERS WEDGE BOLT+, REF 3-FXS2
 hmin = 2 1/8", ho = 2 1/4" (UNO)

7 TYPICAL ANCHOR AT PHARMACY T-FRAMES



(1) ANCHOR BOLTS PER PLATE: 3/8" DIA POWERS WEDGE BOLT+, REF 3-FXS2
 hmin = 2 1/8", ho = 2 1/4" (UNO)

6 ANCHOR AT END CAP FRAMES

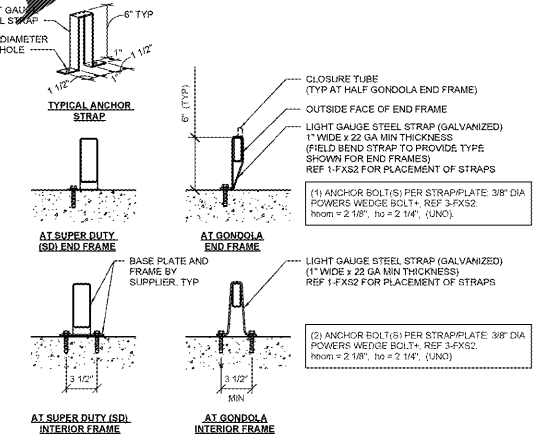


(1) ANCHOR BOLTS PER BASE PLATE: 1/2" DIA POWERS WEDGE BOLT+, REF 3-FXS2 (UNO)
 hmin = 1 7/8", ho = 2 1/4" (UNO)

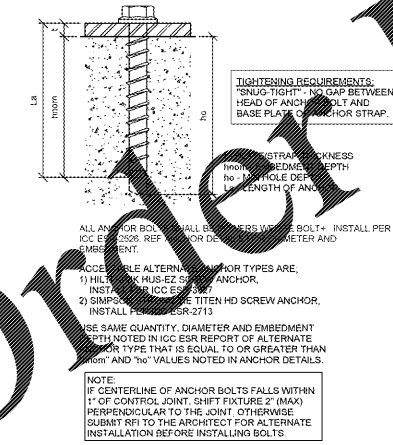
NOTES:
 1. PROVIDE SIZE AND QUANTITY OF ANCHORS AS NOTED ABOVE AT EACH UPRIGHT FRAME POST.
 2. BASE PLATE CONTAINS GREATER NUMBER OF BOLT HOLES THAN ANCHORS SPECIFIED.
 3. ADDITIONAL HOLES IN BASE PLATE NEED NOT BE FILLED WITH ANCHOR BOLTS.
 4. AT 16\"/>

PROVIDE WASHERS AS REQUIRED TO ESTABLISH REQUIRED EMBEDMENT DEPTH "hmin".

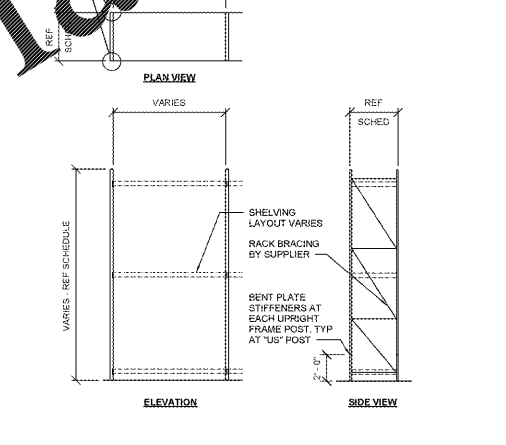
5 TYPICAL ANCHOR AT RACK FRAMES



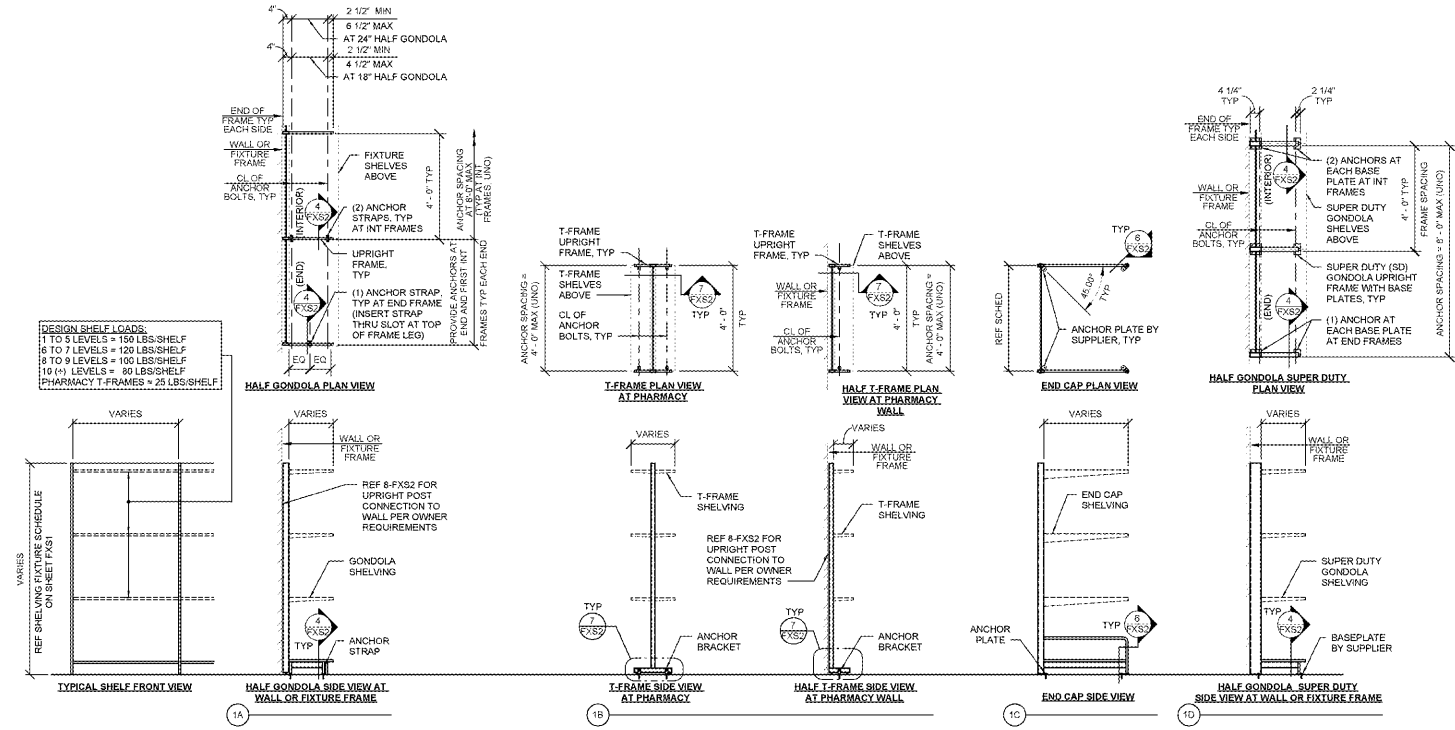
4 TYPICAL ANCHOR AT GONDOLA FRAMES



3 ANCHOR BOLT DETAIL



2 STORAGE AREA RACK ELEVATIONS



1 TYPICAL GONDOLA, PHARMACY T-FRAME AND END CAP SHELVING ELEVATIONS

APOPKA, FL - 1732 818 2300
 1732 818 2351