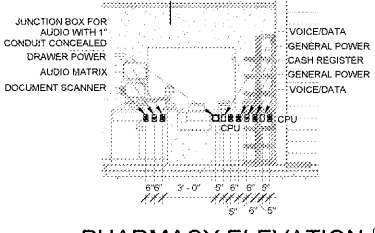
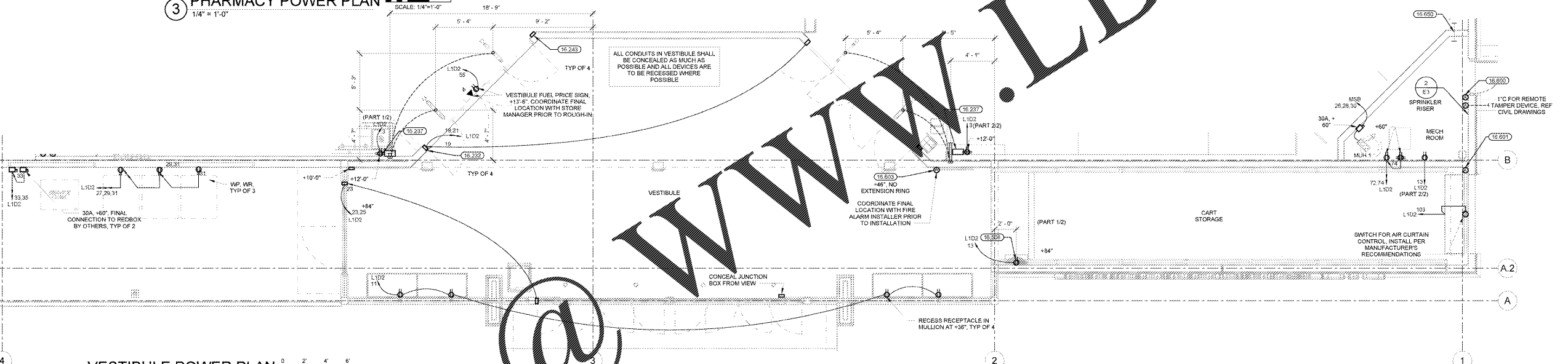


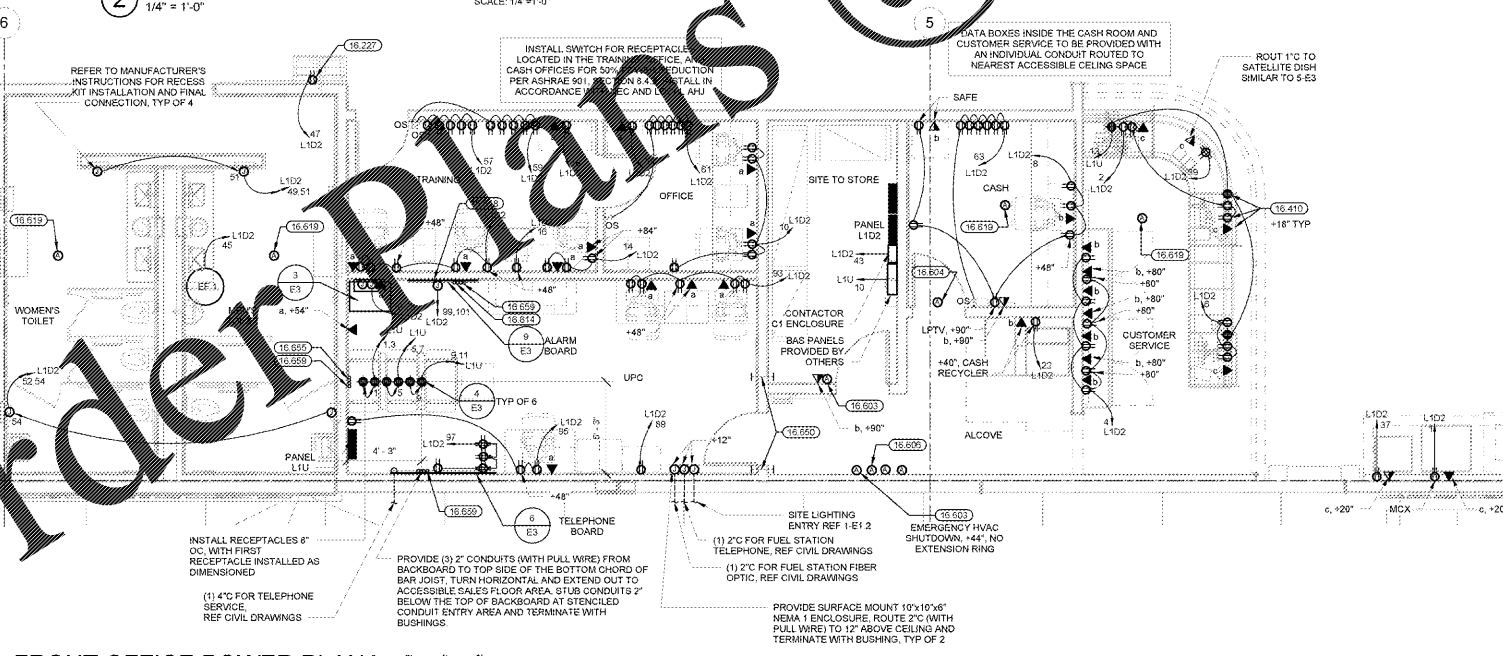
3 PHARMACY POWER PLAN  
1/4" = 1'-0"



4 PHARMACY ELEVATION  
1/4" = 1'-0"



2 VESTIBULE POWER PLAN  
1/4" = 1'-0"



1 FRONT OFFICE POWER PLAN  
1/4" = 1'-0"

KEYNOTES

- 16.227 ELECTRIC WATER COOLER RECEPTACLE CONCEAL WITHIN CABINET PER MANUFACTURER'S REQUIREMENTS.
- 16.232 AUTOMATIC DOOR OPERATOR. VERIFY LOCATION WITH MANUFACTURER'S RECOMMENDATIONS PRIOR TO INSTALLATION. ALL CONDUIT AND WIRING SHALL BE CONCEALED AT MAIN ENTRANCE DOORS.
- 16.237 ELECTRONIC ARTICLE SURVEILLANCE SYSTEM. PROVIDE 3/4" CONDUITS (WITH PULL WIRE) FROM EAS POWER MODULE TO EAS REPEATER LOCATIONS AS SHOWN ON PLANS. FINISHED FLOOR AT EAS REPEATER LOCATION AND EXTEND CONDUIT IN WALL AND STUB OUT INTO NEW 1.27x12" GYPSUM COVER FULL BOX (HOFFMAN #SE121226 OR EQUAL) AT THE HEIGHT OF THE EAS RECEPTACLE. PROVIDE BUSHINGS AT EACH END. PROVIDE 3/4" CONDUITS FROM PULL BOX TO EAS POWER MODULE.
- 16.243 INSTALL MANUFACTURER FURNISHED JUNCTION BOX ABOVE DOOR HEADER FOR SECURITY CABLING. PROVIDE 1" CONDUIT (WITH PULL WIRE FROM JUNCTION BOX) TO STRUCTURE. TERMINATE AT BAR JOIST WITH BUSHING. COORDINATE INSTALLATION WITH MANUFACTURER'S REQUIREMENTS.
- 16.410 COUNTER MOUNTED DEVICES. STUB OUT OF WALL AT +8". ROUTE FLEXIBLE METAL CONDUITS ALONG BACK WALL OF CABINET MOUNT DEVICES WITHIN CABINET AT +8". UNLESS NOTED OTHERWISE, EACH DATA BOX TO BE PROVIDED WITH A SEPARATE CONDUIT ROUTED FROM DATA BOX TO 12" ABOVE LAY-IN CEILING UNLESS NOTED OTHERWISE.
- 16.508 INSECT CONTROL. PROVIDE 2" (UNLESS NOTED OTHERWISE) CONDUIT (WITH PULL WIRE) FROM 18" BELOW CEILING TO 12" ABOVE CEILING AND TERMINATE WITH BUSHINGS.
- 16.600 PROVIDE 3" CONDUITS (WITH PULL WIRE) TO ACCESSIBLE SALES AREA CEILING SPACE. STUB CONDUITS 6" BELOW DROP CEILING AND TERMINATE WITH BUSHINGS.
- 16.601 PROVIDE SURFACE MOUNTED JUNCTION BOX (WITH VERTICAL RACEWAY) ADJACENT TO AND ABOVE WITH TOP OF DOOR FRAME.
- 16.603 PROVIDE RECESSED ALARM JUNCTION BOX (WITH VERTICAL RACEWAY) AT +8" WITH 4"x12" EXTENSION RING (UNLESS NOTED OTHERWISE).
- 16.604 PROVIDE RECESSED ALARM JUNCTION BOX (WITH VERTICAL RACEWAY) CENTERED 2" ABOVE DOOR FRAME.
- 16.606 PROVIDE THREE RECESSED ALARM JUNCTION BOXES (WITH ONE VERTICAL RACEWAY). INSTALL (3) BOXES AT +4" AND AT 10" OC WITH 3/4" CONDUIT NIPPLES BETWEEN BOXES.
- 16.612 PROVIDE RECESSED ALARM JUNCTION BOX (WITH VERTICAL RACEWAY) MOUNTED 2" ABOVE AND 8" IN FROM STRIKE SIDE OF FRAME.
- 16.614 PROVIDE (3) 2" CONDUITS (WITH PULL WIRE) FROM WREWAY TO CHORD TO TOP SIDE OF THE BOTTOM CHORD JOIST. TURN HORIZONTAL AND EXTEND TO ACCESSIBLE SALES AREA CEILING. TERMINATE WITH BUSHINGS.
- 16.616 PROVIDE RECESSED ALARM JUNCTION BOX (WITH VERTICAL RACEWAY) AT +8" FROM DOOR FRAME. COORDINATE WITH INSTALLER PRIOR TO ROUGH-IN.
- 16.618 FINISH ALARM BACKBOARD. PROVIDE 120V FIRE ALARM BACKBOARD EQUIPMENT AS REQUIRED BY BUILDING FIRE ALARM SYSTEM. COORDINATE EXACT PROVIDE WITH THE ALARM INSTALLER PRIOR TO ROUGH-IN.
- 16.619 PROVIDE RECESSED ALARM JUNCTION BOX IN VESTIBULE WITH 4"x12" EXTENSION RING. RACEWAY ROUTED TO NEAREST ACCESSIBLE CEILING SPACE.
- 16.620 CONDUIT SLEEVE. PROVIDE 1-1/2" CONDUIT SLEEVE WITH BUSHINGS ABOVE BAR JOIST (UNLESS NOTED OTHERWISE).
- 16.655 PROVIDE (3) CONDUITS (WITH PULL WIRE) TO ACCESSIBLE SALES AREA CEILING SPACE. STUB CONDUITS 6" BELOW DROP CEILING AND TERMINATE WITH BUSHINGS.
- 16.659 CONDUIT SLEEVE. PROVIDE 2" (UNLESS NOTED OTHERWISE) CONDUIT (WITH PULL WIRE) FROM 18" BELOW CEILING TO 12" ABOVE CEILING AND TERMINATE WITH BUSHINGS.
- 16.657 CONDUIT SLEEVE. PROVIDE 3" CONDUIT (WITH PULL WIRE) FROM 12" ABOVE SUSPENDED CEILING TO NEAREST ACCESSIBLE CEILING SPACE AND TERMINATE WITH BUSHINGS.

BEVERAGE COUNTER EQUIPMENT SCHEDULE						
NO.	DESCRIPTION	VOLT/PHAS	AMPS	TERMINATION	MTG. HT.	NOTES
BEVERAGE COUNTER EQUIPMENT SCHEDULE						
MG007	ICE MACHINE	208/1	24.00 A	RECEPTACLE, NEMA 1-6-30R	30"	
MG042	COFFEE BREWER	120/208/1	23.90 A	JUNCTION BOX	30"	
MG045	HOT BEVERAGE DISPENSER	120/1	18.50 A	DUPLX, NEMA 5-20R	30"	
MG055-B	FRYAL BLENDER	120/1	6.50 A	DUPLX, NEMA 5-20R	30"	
MG056-F	FRYAL FREEZER	120/1	6.50 A	DUPLX, NEMA 5-20R	30"	
MG065	ICE BEVERAGE DISPENSER	120/1	7.00 A	DUPLX, NEMA 5-20R	30"	
MG091	TABLE TOP PASTRY DISPLAY	120/1	1.50 A	DUPLX, NEMA 5-20R	30"	
RD0115	ICE CUBER	120/1	11.80 A	JUNCTION BOX	30"	

NOTE: REFERENCE SPECIFICATIONS FOR MANUFACTURER AND MODEL NUMBERS NOT LISTED IN EQUIPMENT SCHEDULES

MINIMIZE VISIBILITY OF SURFACE MOUNTED CONDUIT ON FRONT WALL. GROUP CONDUIT AND ROUTE HORIZONTALLY TO NEAREST BREAK IN WALL. TURN 90 DEGREES AND ROUTE TO STRUCTURE. GROUP BRANCH CIRCUITS WHEN POSSIBLE TO REDUCE CONDUITS.

STIPULATION FOR THE USE OF THIS DRAWING: THIS DRAWING IS THE PROPERTY OF MPW ENGINEERING, LLC. IT IS TO BE USED ONLY FOR THE PROJECT AND SITE SPECIFICALLY IDENTIFIED HEREIN. IT IS NOT TO BE REPRODUCED, COPIED, OR TRANSMITTED IN ANY FORM OR BY ANY MEANS, ELECTRONIC OR MECHANICAL, INCLUDING PHOTOCOPYING, RECORDING, OR BY ANY INFORMATION STORAGE AND RETRIEVAL SYSTEM, WITHOUT THE WRITTEN PERMISSION OF MPW ENGINEERING, LLC.

CONSULTANTS  
MPW ENGINEERING, LLC  
1100 S. UNIVERSITY AVENUE, SUITE 200  
APOPKA, FL 32712  
TEL: 407.881.1100  
WWW.MPWENGINEERING.COM

Walmart  
APOKA, FL  
STORE NO. 6884  
JOB NUMBER: 097-19-006 - PHOTO

ISSUE BLOCK

DATE	REV #	DESCRIPTION
02/20/17	REV #2	
03/10/17	REV #3	

CHECKED BY: ABM  
DRAWN BY: DJA  
FILE NAME: E2.1  
PROTO CYCLE: 10/28/16  
DOCUMENT DATE: 01/09/17

BID SET.  
NOT FOR  
CONSTRUCTION

THIS ITEM HAS BEEN ELECTRONICALLY SIGNED AND SEALED BY JARON MORSE. DATE AND TIME SHOWN USING A DIGITAL SIGNATURE. PRINTED COPIES OF THIS DOCUMENT ARE NOT CONSIDERED SIGNED AND SEALED AND THE SIGNATURE MUST BE VERIFIED ON ANY ELECTRONIC COPIES.

ENLARGED  
POWER  
PLANS

SHEET: E2.1