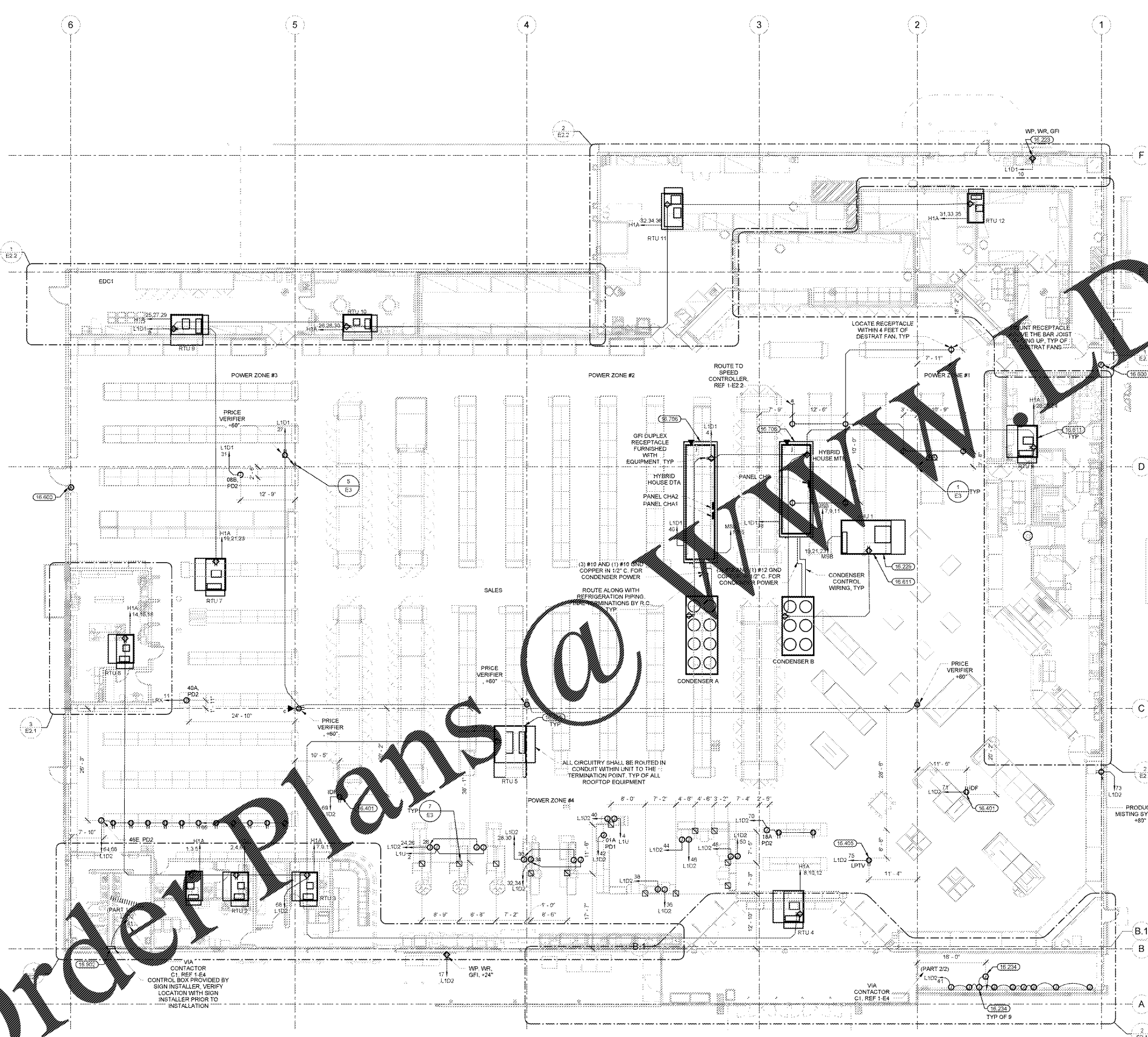


Order Plans @ WWW.DIMLINE.COM



1 POWER PLAN
1" = 10'-0"
SCALE: 1"=10'-0"

- POWER DROP NOTES**
- APPROXIMATELY 40 DAYS PRIOR TO POSSESSION DATE, A REVISION OF THIS PLAN BASED ON THE FINAL MERCHANDISE LAYOUT WILL BE ISSUED TO SHOW FINAL LOCATIONS FOR THE POWER DROPS. IF MERCHANDISE PLAN DOES NOT CHANGE, THIS PLAN WILL NOT BE REVISED. PROVIDE CIRCULARITY TO DISPLAY RACKS AS THEY ARE SET. IN ADDITION, THE FOLLOWING POWER DROP NOTES APPLY.
 - THERE SHALL BE NO ADDITIONAL CHARGE FOR DROP RELOCATION WITHIN POWER DROP ZONES DEFINED ON DRAWINGS.
 - POWER DROPS FED FROM TRACK BUSWAY: INSTALL FURNISHED PLUG-IN UNIT AT A POINT ON TRACK BUSWAY NEAREST POWER DROPS.
 - AT CLOSE OF PROJECT THE GENERAL CONTRACTOR AND CONSTRUCTION MANAGER SHALL REVIEW ADDITIONAL OR DELETED POWER DROPS WITHIN EACH ZONE TO VERIFY ANY ADDITIONAL CHARGES OR CREDITS THAT APPLY DUE TO CHANGES.
 - ADDING OR SUBTRACTING A POWER DROP TO ANY ZONE WILL RESULT IN A CHARGE OR CREDIT ACCORDING TO SPECIAL CONDITIONS.
 - PROVIDE JUNCTION BOX AND CIRCULARITY TO NEAREST JOIST ABOVE LOCATION SHOWN ON DRAWING. EXTEND CONDUIT AND CIRCULARITY FROM JUNCTION BOX TO ENCAP OF DISPLAY RACK AWAY FROM ACTION ALLEY.
 - PROVIDE CONDUIT AND RECEPTACLE(S) AT DISPLAY RACK SHELVING PER POWER DROP SCHEDULE UNLESS NOTED OTHERWISE ON DRAWING. VERIFY EXISTING LOCATION OF RECEPTACLE(S) WHERE PLAN IS NOT SET-UP SUPERVISION PROVIDED INSTALLATION.

- GENERAL POWER NOTES**
- TELEPOWER POLE(S) MOUNT JUNCTION BOX(ES) TO TOP SIDE OF BOTTOM CHORD OF BAR JOIST. INSTALL FURNISHED FIRE WIRING POWER POLE AND TERMINATE PROVIDED FLEXIBLE CONDUIT AND WIRING TO JUNCTION BOX. PROVIDE UNSTRUT SUPPORTS AND HARDWARE TO SECURE TELEPOWER POLE PLUMB TO BUILDING STRUCTURE. REF POWER POLE CONNECTION DETAIL.
 - PROVIDE LIQUID-TIGHT FLEXIBLE METAL CONDUIT AND WIRING FROM DISCONNECT SWITCH OR JUNCTION BOX TO EQUIPMENT KNOCKOUT OR ELECTRICAL CONNECTION POINT.
 - WHERE EQUIPMENT NAMEPLATE PROTECTIVE DEVICE RATING DIFFERS FROM SIZE PROVIDED, CHANGE OUT BRANCH CIRCUIT WIRING TO OVERCURRENT DEVICE TO APPROXIMATE RATING PER NEC.
 - ELECTRONIC FIRE PROTECTION SECURITY ALARMS AND CONDUITS SHOWING POWER PLAN SHALL BE PROVIDED UNDER THIS CONTRACT. IN ADDITION, LIST ALL OTHERS IN THE FOLLOWING GENERAL NOTES APPLICABLE:
 - ALL ALARM JUNCTION BOXES SHALL BE 4"X4"X2" MINIMUM.
 - ALARM RACKS SHALL BE 1/4" MINIMUM WITH FULL WIRE.
 - VERTICAL RACKS FOR ALARM BOXES SHALL BE EITHER CONCEALED INSIDE WALL OR SURFACE MOUNTED TO MATCH JUNCTION BOX. ALL VERTICAL RACKS SHALL BE TURNED 90 DEGREES AT TOP SIDE OF BOTTOM CHORD OF BAR JOIST AND EXTENDED HORIZONTALLY TO A LOCATION ACCESSIBLE BY VERTICAL FLOOR TYPE LIFT.
 - UPON COMPLETION OF ELECTRICAL INSTALLATION AND PRIOR TO ENERGIZING CIRCUIT:
 - INSPECT WIRE AND CABLE FOR PHYSICAL DAMAGE.
 - PERFORM CONTINUITY TEST.
 - VERIFY PROPER PHASING CONNECTION TO ALL THREE PHASE MOTOR LOADS.

POWER DROPPED SCHEDULE

NO.	DESCRIPTION	ES
PD1	MOUNT RECEPTACLE(S) ON TOP OF DISPLAY UNIT(S)	
PD2	MOUNT RECEPTACLE(S) ON BASE OF DISPLAY UNIT(S)	
PD3	PROVIDE DIRECT CONNECTION TO EQUIPMENT	
PD4	MOUNT RECEPTACLE AT BAR JOIST AND INSTALL FURNISHED CORD REEL	

- KEYNOTES**
- 16.223 JB CRANE MOUNT RECEPTACLE TO GUARD-RAIL STRUCTURE. ROUTE CONDUIT FROM RECEPTACLE ALONG GUARD-RAIL STRUCTURE AND PENETRATE WALL 2'-0" BELOW ROOF DECK.
 - 16.229 AIR HANDLING UNIT IS PROVIDED WITH A DISCONNECT SWITCH AND GFI DUPLEX RECEPTACLE.
 - 16.233 ROOF TOP UNIT IS PROVIDED WITH A HOCR RATED CIRCUIT BREAKER AND GFI DUPLEX RECEPTACLE.
 - 16.234 EXTERIOR SIGN POWER: MOUNT JUNCTION BOX(ES) TO WALL IN CEILING SPACE BELOW BOTTOM CHORD OF BAR JOIST UNLESS NOTED OTHERWISE. COORDINATE LOCATION OF ACCESS DOORS AND PROVIDE FINAL POWER TERMINATIONS WHERE ELECTRICAL CONNECTIONS FOR SIGNAGE OCCUR ABOVE ROOF LINE. PROVIDE UNSTRUT TO MOUNT JUNCTION BOXES TO BACK SIDE OF HARPET AND PROVIDE ONLY ONE PENETRATION THROUGH THE ROOF. REF ARCHITECTURAL EXTERIOR WALL SECTIONS AND SHOP DETAIL FOR ROOF AND HARPET PENETRATION REQUIREMENTS.
 - 16.401 IDF CABINET: INSTALL RECEPTACLE IN PRE-INSTALLED JUNCTION BOX INSIDE THE IDF CABINET ENCLOSURE. OF CABINET PROVIDED BY OTHERS AT STRUCTURE. COORDINATE FINAL IDF CABINET LOCATION WITH CABINET INSTALLER PRIOR TO INSTALLATION.
 - 16.405 LFTV MONITOR MOUNT RECEPTACLE AT BAR JOIST FOR LFTV POWER SUPPLY. POWER SUPPLY PROVIDED BY OTHERS. COORDINATE FINAL RECEPTACLE PLACEMENT WITH MONITOR INSTALLER.
 - 16.600 PROVIDE SURFACE MOUNTED ALARM JUNCTION BOX (WITH VERTICAL RAKEWAY) MOUNTED 2" ABOVE AND 8" IN FROM STRIKE SIDE OF DOOR FRAME.
 - 16.611 UNITS WITH SMOKE DETECTORS: PROVIDE 3/4" CONDUIT FROM LOW VOLTAGE WIRING COMPARTMENT, DOWN THROUGH ROOF CURB, REFERENCE MECHANICAL SCHEDULES FOR APPLICABLE UNITS.
 - 16.705 PROVIDE GROUNDING ELECTRODE CONNECTION FOR SEPARATELY DERIVED SYSTEM IN COMPRESSOR HOUSE. ROUTE GROUNDING ELECTRIC CONDUCTOR FROM TRANSFORMER TO EFFECTIVELY GROUND STRUCTURAL STEEL IN MAIN BUILDING.
 - 16.902 EXTERIOR SIGN POWER: WHERE ELECTRICAL CONNECTIONS FOR SIGNAGE OCCUR BELOW ROOF LINE, MOUNT JUNCTION BOX(ES) TO WALL AT SIGN CONNECTION POINT AND PROVIDE 3/4" CONDUIT TO CONTROL BOX FOR LOW VOLTAGE WIRING (INSTALLED BY OTHERS). REFER TO ARCHITECTURAL DRAWINGS FOR EXACT SIGN LOCATIONS. PRIOR TO INSTALLATION, WHERE ELECTRICAL CONNECTIONS FOR SIGNAGE OCCUR ABOVE ROOF LINE, PROVIDE UNSTRUT TO MOUNT JUNCTION BOXES TO BACK SIDE OF HARPET AND PROVIDE 3/4" CONDUIT TO CONTROL BOX FOR LOW VOLTAGE WIRING (INSTALLED BY OTHERS). PROVIDE ONLY ONE PENETRATION THROUGH THE ROOF. REF ARCHITECTURAL EXTERIOR WALL SECTIONS AND SIGN ATTACHMENT FOR ROOF AND HARPET PENETRATION REQUIREMENTS.

STIPULATION FOR THE USER:
THIS DOCUMENT IS THE PROPERTY OF DIMLINE.COM. IT IS TO BE USED ONLY FOR THE PROJECT AND SITE SPECIFICALLY IDENTIFIED HEREIN. IT IS NOT TO BE REPRODUCED, COPIED, OR TRANSMITTED IN ANY FORM OR BY ANY MEANS, ELECTRONIC OR MECHANICAL, INCLUDING PHOTOCOPYING, RECORDING, OR BY ANY INFORMATION STORAGE AND RETRIEVAL SYSTEM, WITHOUT THE WRITTEN PERMISSION OF DIMLINE.COM.

MPW CONSULTANTS
MPW ENGINEERING, LLC
1100 N. UNIVERSITY BLVD., SUITE 200
APOPKA, FL 32015
TEL: 407.881.1100
WWW.MPWENGINEERING.COM

Walmart APOKA, FL
STORE NO. 6884
JOB NUMBER: 097-19-006 - PHOTO
41.2

ISSUE BLOCK

NO.	DATE	DESCRIPTION
1	03/10/17	REV #3

CHECKED BY: ABM
DRAWN BY: DJA
FILE NAME: E2
PHOTO CYCLE: 10/28/16
DOCUMENT DATE: 01/09/17

BID SET. NOT FOR CONSTRUCTION

THIS ITEM HAS BEEN ELECTRONICALLY SIGNED AND SEALED BY JARON MORSE. PE ON THE DATE AND/OR TIME STAMP SHOWN USING A DIGITAL SIGNATURE. PRINTED COPIES OF THIS DOCUMENT ARE NOT CONSIDERED SIGNED AND SEALED AND THE SIGNATURES MUST BE VERIFIED ON ANY ELECTRONIC COPIES.

POWER PLAN

SHEET: **E2**