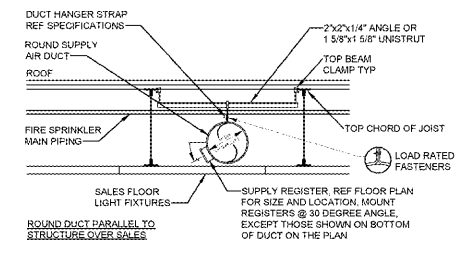
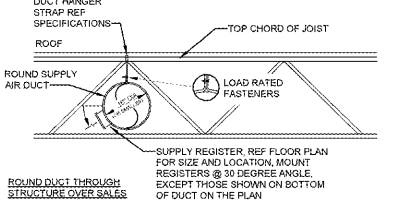


KEYNOTES	GENERAL NOTES
15.715 ADJUST LOUVER FOR HORIZONTAL THROW TO NOT BLOW AIR ON TEMPERATURE SENSOR	1. FLEXIBLE DUCTWORK IS NOT PERMITTED. 2. REFER TO STRUCTURAL DRAWINGS FOR EXACT LOCATIONS OF ROOFTOP EQUIPMENT. 3. REFER TO EM DRAWINGS FOR EQUIPMENT CONTROLS NOT SHOWN ON HVAC DRAWINGS. 4. LIGHT FIXTURE LOCATIONS TAKE PRECEDENCE OVER DIFFUSER AND GRILLE LOCATIONS. LOCATE DIFFUSERS AND GRILLES TO ACCOMMODATE LIGHTING LAYOUT. 5. DUCT SIZES SHOWN ON DRAWINGS ARE NET FREE AREA. INCREASE RECTANGULAR METAL SIZE AS REQUIRED FOR INSULATION THICKNESS. CONTRACTOR'S OPTION. ROUND DUCTWORK OF EQUIVALENT FREE AREA MAY BE USED IN LIEU OF RECTANGULAR DUCTWORK. 6. DUCT SUPPORT AND HANGER DETAILS ARE APPLICABLE THROUGHOUT THE PROJECT. DO NOT SUPPORT DUCTWORK FROM BRIDGE. USE FASTENERS THAT PENETRATE ROOF DECK. 7. PROVIDE CONCENTRIC TRANSITIONS FOR EXPOSED SPRINKLER HEADS IN THE SALES AREA. 8. PROVIDE FIRE/SMOKE AND/OR CEILING RADIATION DAMPERS WHERE SHOWN ON PLANS AND PER APPLICABLE JURISDICTION. PROVIDE ACCESS TO DAMPERS AS REQUIRED. REFER TO ARCHITECTURAL DRAWINGS FOR VERIFICATION OF RATED WALLS AND CEILING. 9. HIGH EFFICIENCY BRANCH DUCT FITTING DETAIL IS APPLICABLE THROUGHOUT THE STORE. 10. PROVIDE VOLUME CONTROL DAMPERS IN DUCTS TO DIFFUSERS. INSTALL DAMPERS A MINIMUM OF 24" AWAY FROM DIFFUSERS AND A MAXIMUM OF 60" ABOVE THE CEILING FOR ACCESSIBILITY UNLESS SHOWN OTHERWISE ON DRAWINGS. PROVIDE ACCESS PANELS WHERE DAMPERS MUST BE INSTALLED ABOVE NON-ACCESSIBLE CEILING. REFER TO VOLUME-BALANCE DAMPER SCHEDULE FOR APPROVED MANUFACTURERS. 11. INSTALL FLUES A MINIMUM OF 8 FT FROM ROOF EDGE AND/OR PARAPET WALLS. INSTALL FLUES AND EXHAUST FANS A MINIMUM OF 10 FT FROM OUTSIDE AIR INTAKE OF ROOF TOP UNITS. INSTALL EXHAUST FANS AND ROOF TOP UNITS A MINIMUM OF 10 FT FROM ROOF EDGE OR A MINIMUM OF 8 FT FROM PARAPET WALLS THAT ARE AT LEAST 42" HIGH. 12. LABEL RTUs WITH 6 IN. BLACK PERMANENT PAIN STENCIL. NUMBER UNITS AS INDICATED ON DRAWINGS. LOCATE LABEL FOR EACH UNIT SO IT CAN BE READ FROM THE ROOF HATCH.

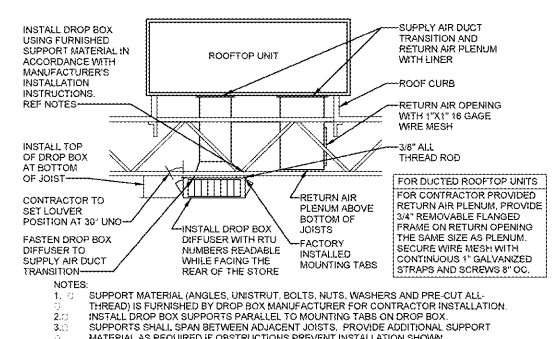
5 EXPOSED DUCT SUPPORT AND GRILLE A  
NTS



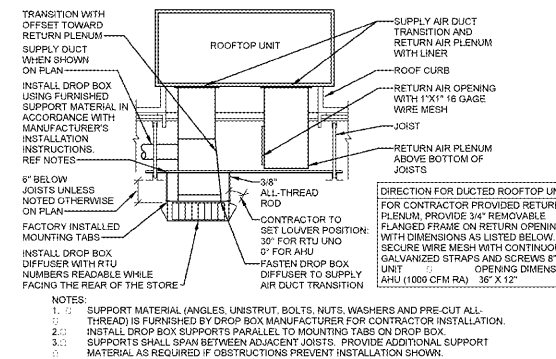
4 EXPOSED DUCT SUPPORT AND GRILLE B  
NTS



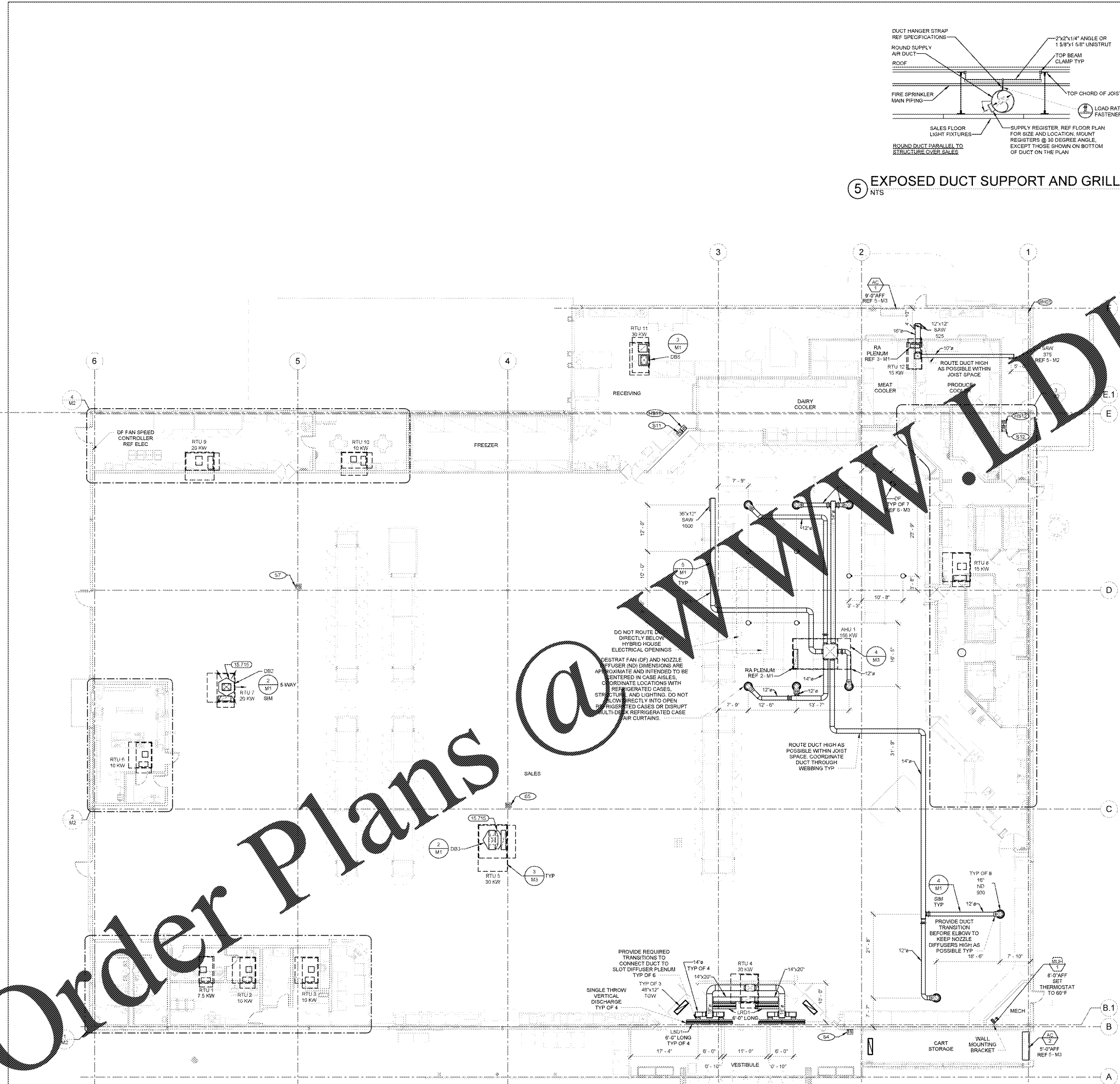
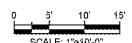
3 STOCKROOM RTU/DROP BOX  
NTS



2 SALES FLOOR DROP BOX  
NTS



1 HVAC PLAN  
1" = 10'-0"



STIPULATION FOR THE CONTRACTOR TO VERIFY ALL INFORMATION AND CONDITIONS ARE ACCURATE AND COMPLETE. THE CONTRACTOR SHALL BE RESPONSIBLE FOR OBTAINING ALL NECESSARY PERMITS AND APPROVALS. THE CONTRACTOR SHALL BE RESPONSIBLE FOR OBTAINING ALL NECESSARY PERMITS AND APPROVALS. THE CONTRACTOR SHALL BE RESPONSIBLE FOR OBTAINING ALL NECESSARY PERMITS AND APPROVALS.

CONSULTANTS  
MPW  
MPW ENGINEERING, LLC  
1101 N. WINDYBROOK DRIVE  
SUITE 200  
APOPKA, FL 32112  
TEL: 407.881.8800  
WWW.MPWENGINEERING.COM

Walmart  
APOKA, FL  
STORE NO. 6884  
JOB NUMBER: 09715-006 | PHOTO: 412

ISSUE BLOCK	
▲	01/25/17 REV #1
▲	03/27/17 REV #4
▲	04/07/17 REV #5

CHECKED BY: MWM  
DRAWN BY: TDT  
FILE NAME: M1  
PROTO CYCLE: 10/28/16  
DOCUMENT DATE: 01/26/17

BID SET  
NOT FOR  
CONSTRUCTION

THIS ITEM HAS BEEN ELECTRONICALLY SIGNED AND SEALED BY SCOTT C. WEBB. PE ON THE DATE AND/OR TIME STAMP SHOWN USING A DIGITAL SIGNATURE. PRINTED COPIES OF THIS DOCUMENT ARE NOT CONSIDERED SIGNED AND SEALED AND THE SIGNATURE MUST BE VERIFIED ON ANY ELECTRONIC COPIES.

HVAC PLAN AND DETAILS

SHEET: M1