

MATERIAL KEY	
BB:	PLASTIC BASE, BLACK
PL7:	PLASTIC LAMINATE, DARK GRAY
PL9:	PLASTIC LAMINATE, LIGHT STONE
PS3:	PAINT, "DOVER WHITE" SW #6385
PS6:	PAINT, "DOMINO" SW #6699
PL13:	PAINT, "JONQUIL" SW #6674
P131:	PAINT, "WHITE FLOOR" SW #1102
P163:	PAINT, "TURQUISH" SW #6630
RB1:	RESILIENT BASE, BLACK

SHEET NOTES	
1.	REF AT FOR SCHEDULE FINISH KEY
2.	REF SHEET A5.2 FOR FIXTURE MOUNTING HEIGHTS
3.	ALL MELAMINE TO BE WHITE.

KEYNOTES	
6.17	PROTECTIVE WALL SURFACING WITH INSIDE AND OUTSIDE CORNER TRIM
6.27	48" HIGH WAINSCOT WITH OUTSIDE CORNER TRIM



STIPULATION FOR REUSE  
 THIS DOCUMENT IS THE PROPERTY OF MMCI. IT IS TO BE USED ONLY FOR THE PROJECT AND SITE SPECIFICALLY IDENTIFIED HEREIN. IT IS NOT TO BE REPRODUCED, COPIED, OR TRANSMITTED IN ANY FORM OR BY ANY MEANS, ELECTRONIC OR MECHANICAL, WITHOUT THE WRITTEN PERMISSION OF MMCI. THE USER OF THIS DOCUMENT AGREES TO HOLD MMCI HARMLESS FROM AND AGAINST ALL CLAIMS, DAMAGES, LOSSES AND EXPENSES, INCLUDING REASONABLE ATTORNEY'S FEES, THAT MAY BE ASSERTED AGAINST MMCI BY ANY THIRD PARTY AS A RESULT OF THE USER'S REUSE OF THIS DOCUMENT FOR ANY OTHER PROJECT OR SITE.

CONSULTANTS

Walmart  
 Neighborhood Market  
 APOPKA, FL  
 STORE NO. 6994-00  
 097-15-008 PHOTO 41.2  
 JOB NUMBER

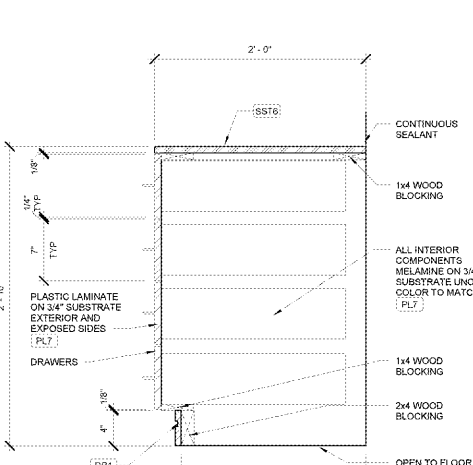
ISSUE BLOCK	
2	REV 4 04/07/17

CHECKED BY: Checker  
 DRAWN BY: Author  
 FILE NAME: 41\_2\_P11.1  
 PHOTO CYCLE: 102816  
 DOCUMENT DATE: 01/09/17

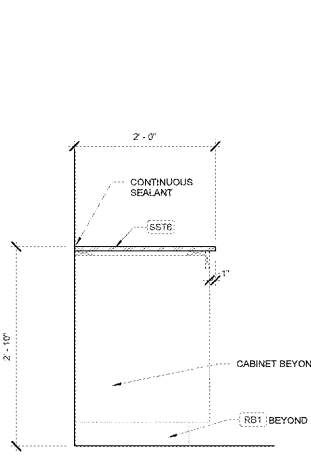
BID SET  
 NOT FOR  
 CONSTRUCTION

PHARMACY  
 SECTIONS  
 AND DETAILS

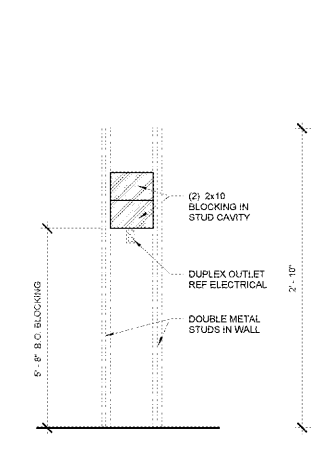
PH1.1



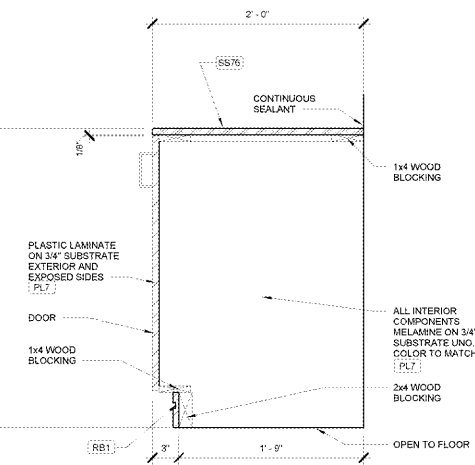
15 HSR BASE CABINET SECTION  
 1 1/2" = 1'-0"



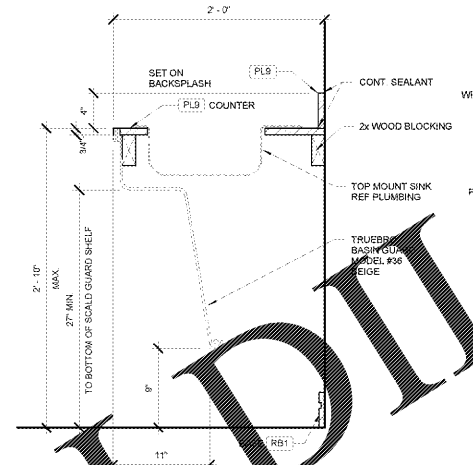
14 MILLWORK SECTION  
 1 1/2" = 1'-0"



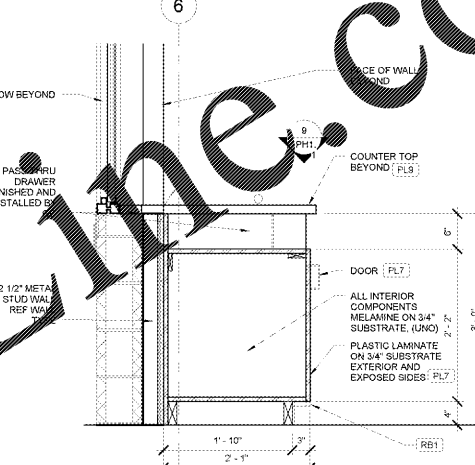
13 DIGITAL DISPLAY BRACKET BLOCKING  
 1/2" = 1'-0"



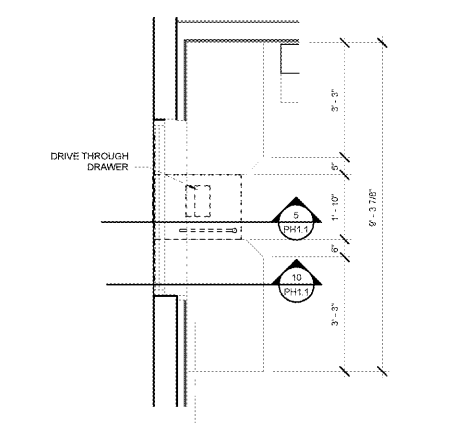
12 BASE CABINET SECTION  
 1 1/2" = 1'-0"



11 H.S. SINK APRON SECTION  
 1 1/2" = 1'-0"



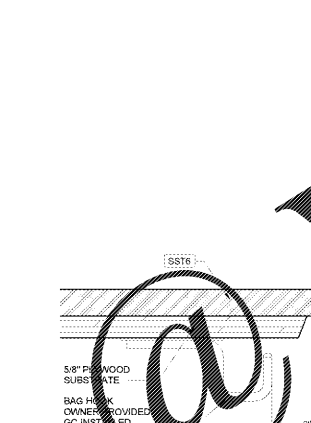
10 BASE CABINET SECTION  
 1" = 1'-0"



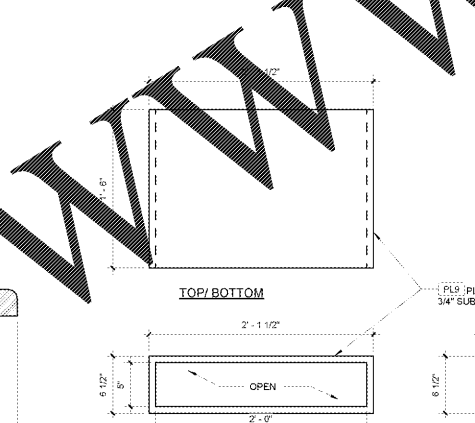
9 DRIVE-THRU ENLARGED PLAN  
 1/2" = 1'-0"



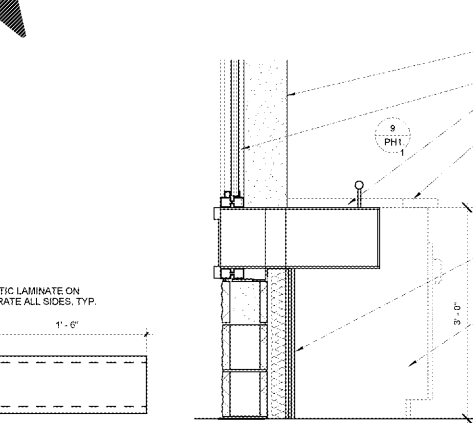
8 NOT USED  
 N.T.S.



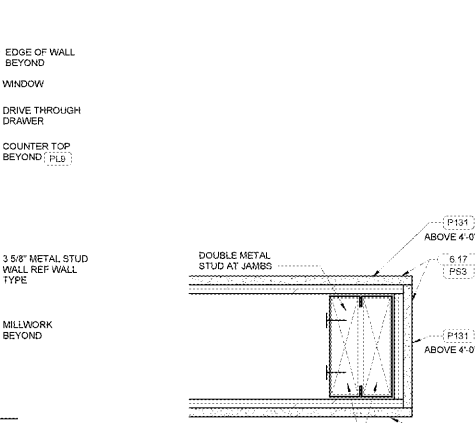
7 BAG HOOK  
 6" = 1'-0"



6 CASH SHELF  
 1 1/2" = 1'-0"



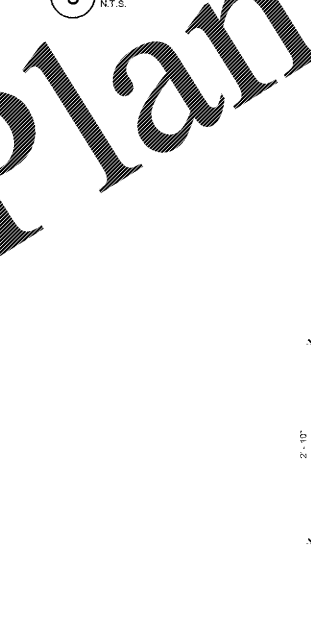
5 BASE CABINET SECTION  
 1" = 1'-0"



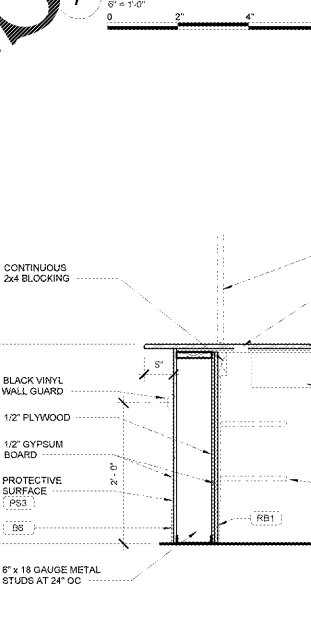
4 JAMB AT SHUTTER  
 2" = 1'-0"



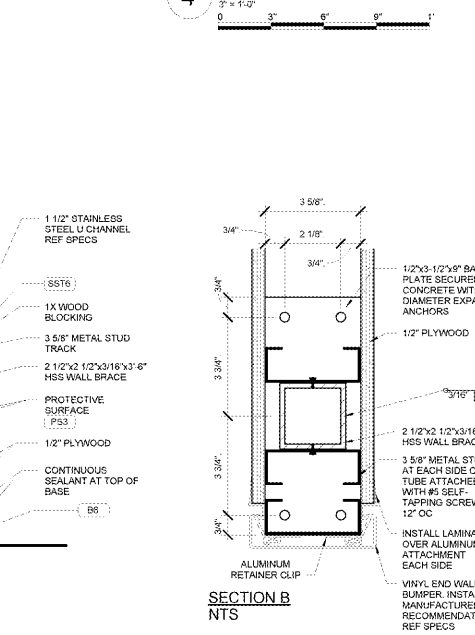
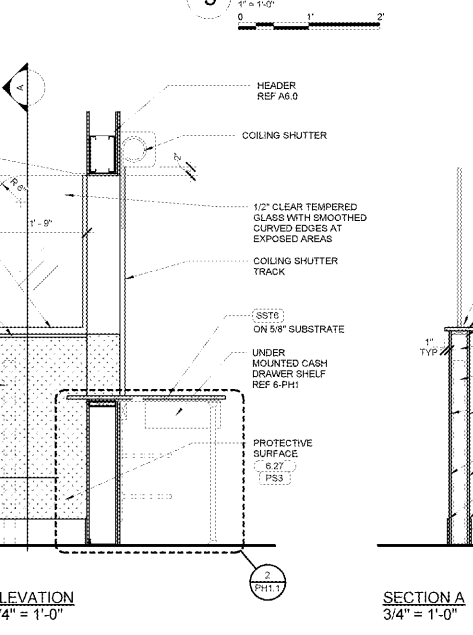
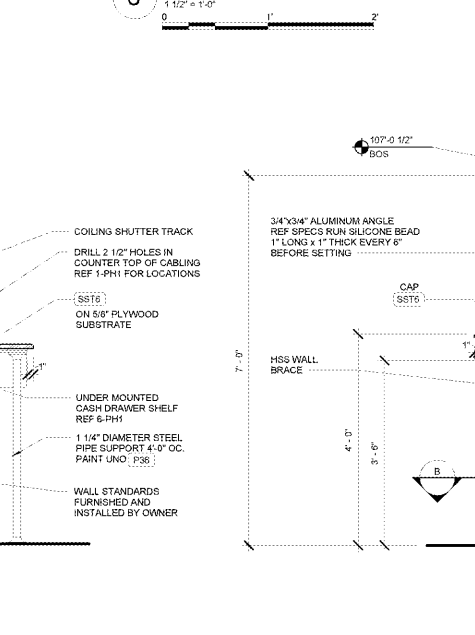
3 NOT USED  
 N.T.S.



2 BASE CABINET SECTION  
 1" = 1'-0"



1 PRIVACY WALL  
 3/4" = 1'-0"



Order Plans @