

GENERAL NOTES

1. PROPER INSTALLATION OF JOINT SEALANTS IS CRITICAL TO MEETING OWNER'S QUALITY ASSURANCE STANDARDS. PROVIDE SEALANTS IN ACCORDANCE WITH DRAWINGS AND SPECIFICATIONS. REFERENCE SECTION 07900 FOR SEALANT SCHEDULE.
2. ALL JOINTS BETWEEN DISSIMILAR MATERIALS SHALL BE SEALED AS REQUIRED FOR A COMPLETE AND PROPER INSTALLATION, REGARDLESS OF WHETHER SHOWN ON THE DRAWINGS OR INDICATED IN THE SPECIFICATIONS. SUCH JOINTS NOT SHOWN OR SCHEDULED SHALL BE SEALED WITH SEALANTS CONSISTENT WITH SPECIFIED MATERIALS OR AS RECOMMENDED BY THE MANUFACTURER FOR THE SPECIFIC APPLICATION.
3. INTERIOR SEALANTS USED IN FOOD PREPARATION AREAS MUST MEET THE REQUIREMENTS OF THE FDA REGULATED FACTORIES.
4. REF. TO SCHEDULE FOR SEALS.



STIPULATION FOR THE USE OF THIS DRAWING: THIS DRAWING IS THE PROPERTY OF JMD AND IS TO BE USED ONLY FOR THE PROJECT AND SITE SPECIFICALLY IDENTIFIED HEREON. IT IS NOT TO BE REPRODUCED, COPIED, OR TRANSMITTED IN ANY FORM OR BY ANY MEANS, ELECTRONIC OR MECHANICAL, INCLUDING PHOTOCOPYING, RECORDING, OR BY ANY INFORMATION STORAGE AND RETRIEVAL SYSTEM, WITHOUT THE WRITTEN PERMISSION OF JMD.

CONSULTANTS

Wal-Mart Neighborhood Market
 APOPKA, FL
 STORE NO.: 6894-00
 09/15/06 | PHOTO

ISSUE BLOCK

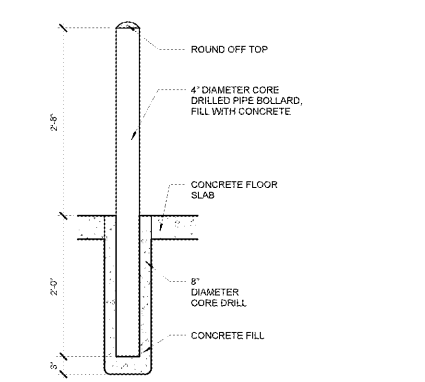
NO.	DATE	DESCRIPTION

CHECKED BY: Checker
 DRAWN BY: Author
 FILE NAME: 41_2-A9
 PHOTO CYCLE: 102816
 DOCUMENT DATE: 01/09/17

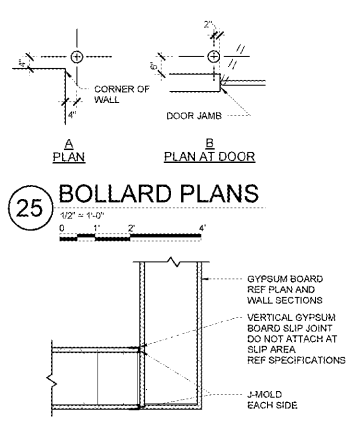
BID SET NOT FOR CONSTRUCTION

MISC DETAILS

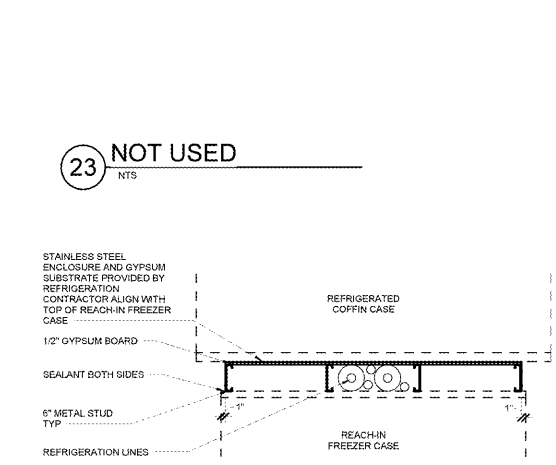
SHEET: A9



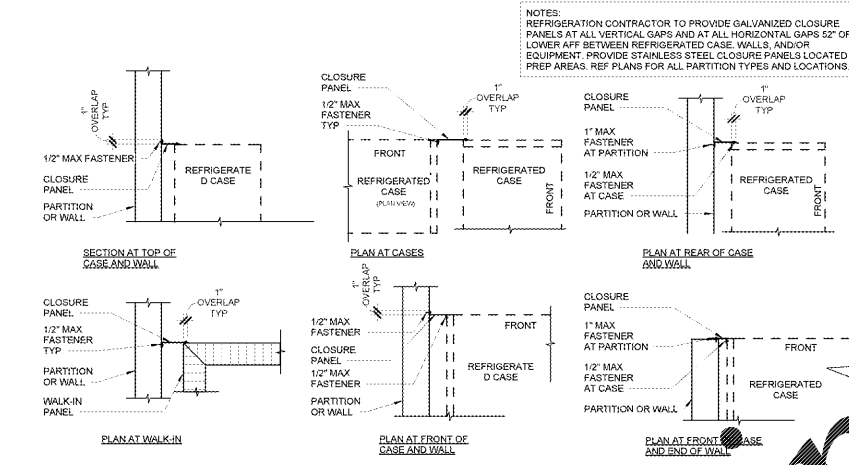
26 CORE DRILLED BOLLARD



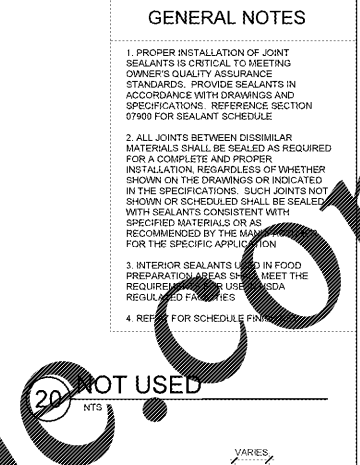
25 BOLLARD PLANS



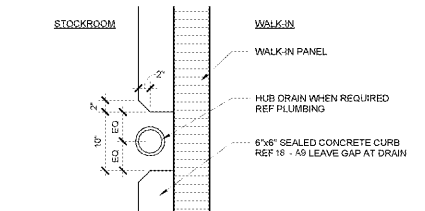
24 CONTROL JOINT AT BULKHEAD CONNECTION



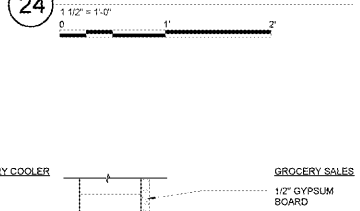
21 CLOSURE PANEL DETAIL



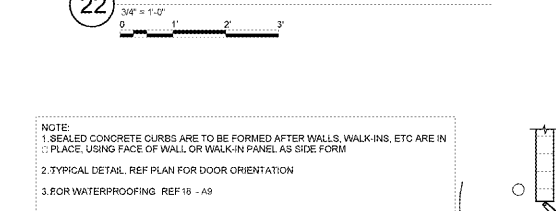
20 WAINSCOT SECTION



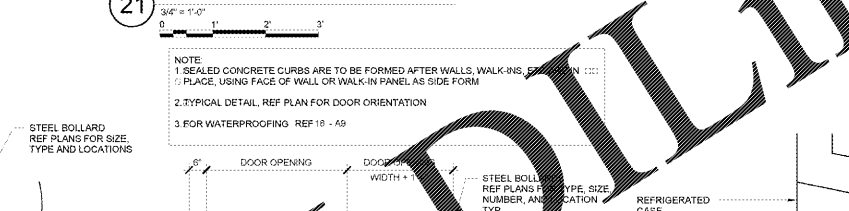
19 CURB/FUNNEL DRAIN



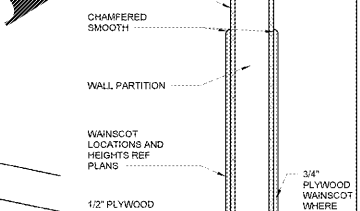
22 REFRIGERATION CHASE DETAIL



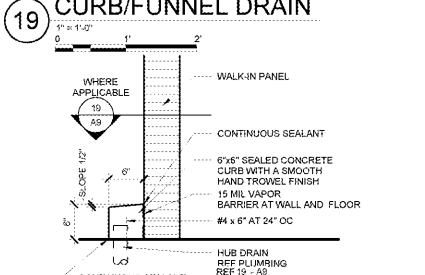
23 NOT USED



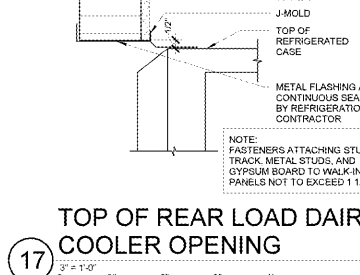
21 CLOSURE PANEL DETAIL (continued)



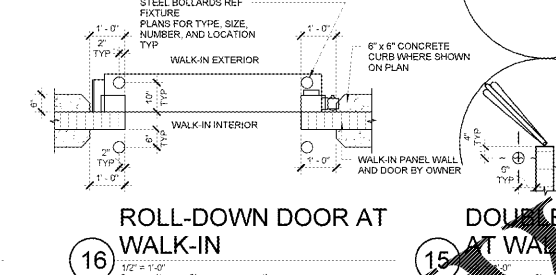
20 WAINSCOT SECTION (continued)



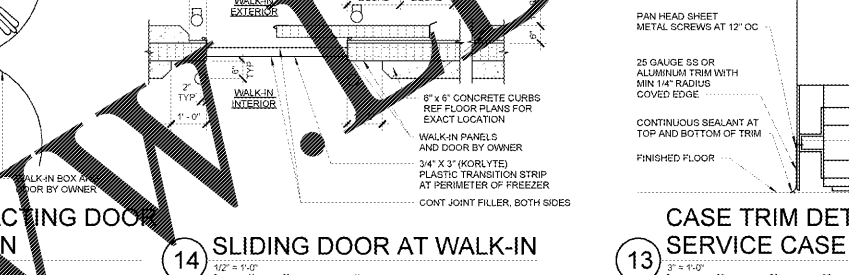
18 CURB



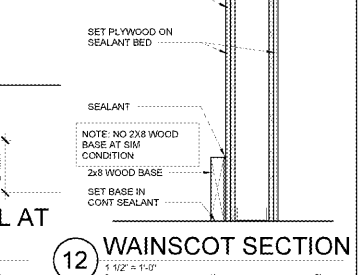
24 CONTROL JOINT AT BULKHEAD CONNECTION (continued)



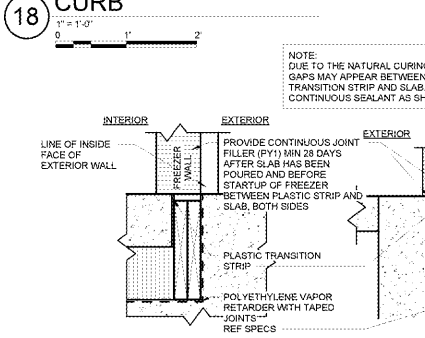
22 REFRIGERATION CHASE DETAIL (continued)



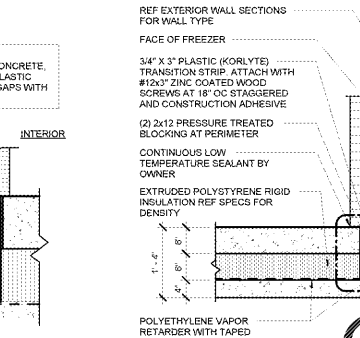
21 CLOSURE PANEL DETAIL (continued)



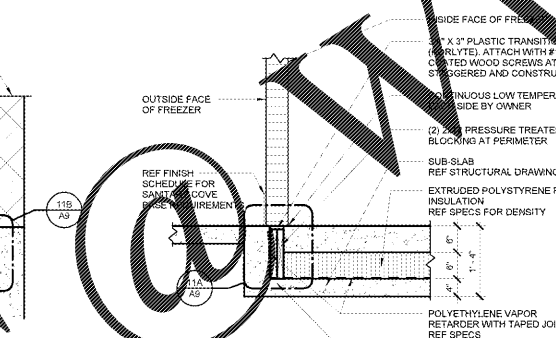
20 WAINSCOT SECTION (continued)



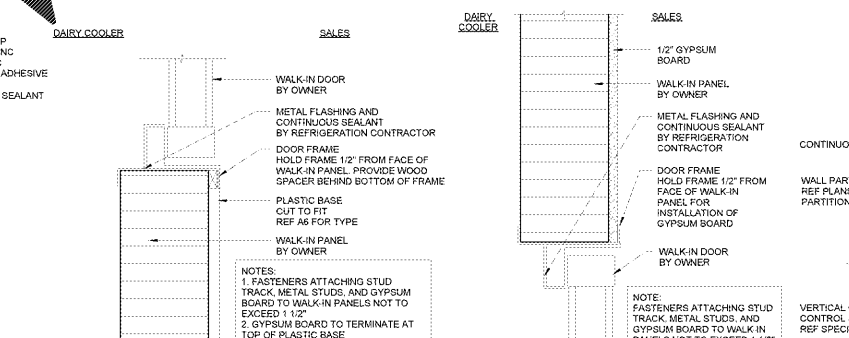
17 TOP OF REAR LOAD DAIRY COOLER OPENING



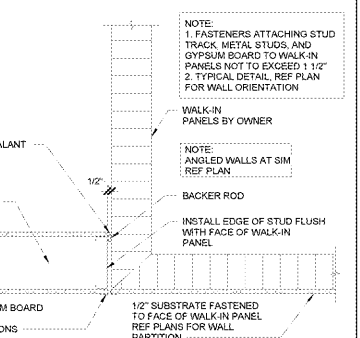
24 CONTROL JOINT AT BULKHEAD CONNECTION (continued)



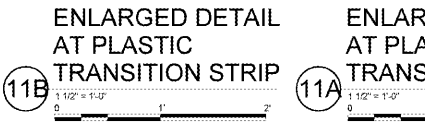
22 REFRIGERATION CHASE DETAIL (continued)



21 CLOSURE PANEL DETAIL (continued)



20 WAINSCOT SECTION (continued)



11B ENLARGED DETAIL AT PLASTIC TRANSITION STRIP



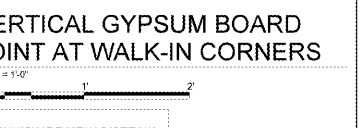
11A ENLARGED DETAIL AT PLASTIC TRANSITION STRIP



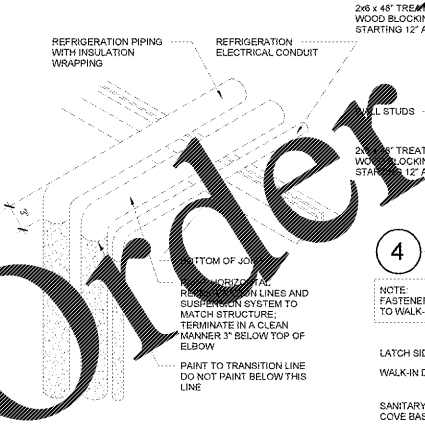
10 INSULATED FREEZER SLAB AT EXTERIOR WALL



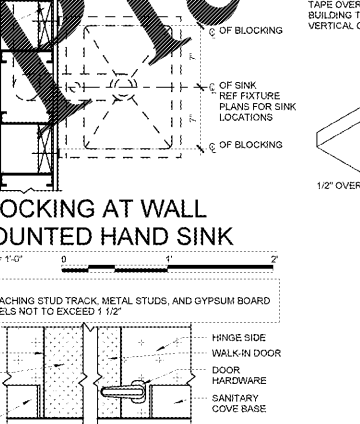
8 DETAIL AT BOTTOM OF WALK-IN REACH-IN DOORS



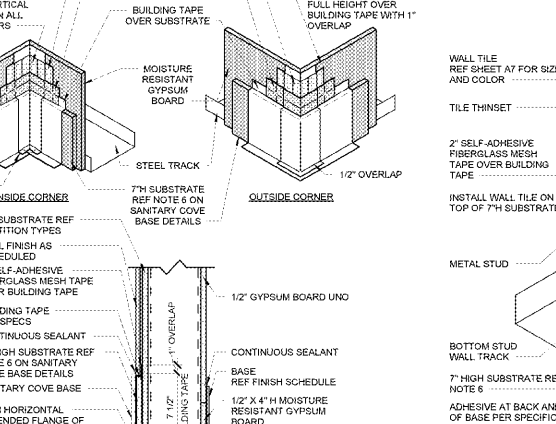
6 VERTICAL GYPSUM BOARD JOINT AT WALK-IN CORNERS



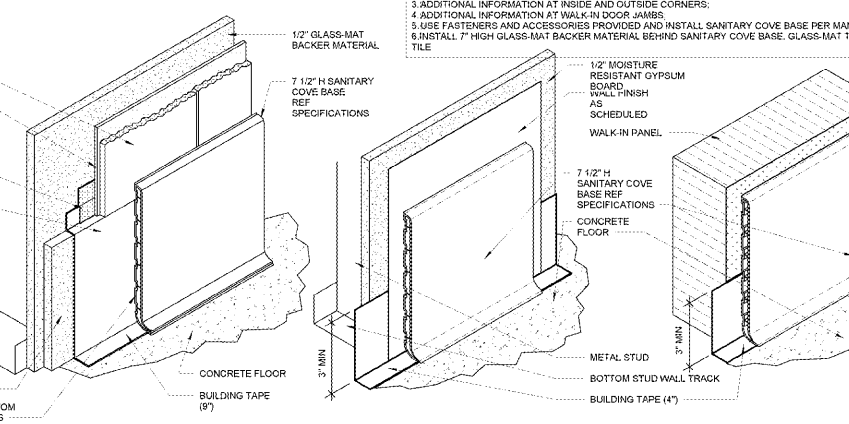
5 REFRIGERATION DROP LINES



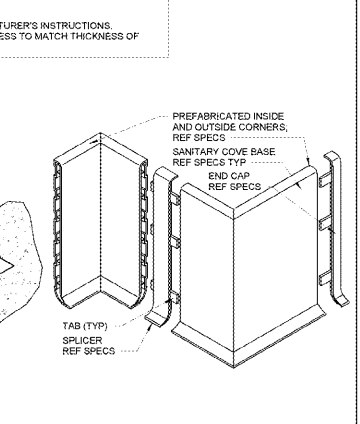
4 BLOCKING AT WALL MOUNTED HAND SINK



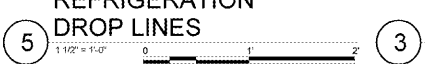
9 INSULATED FREEZER SLAB



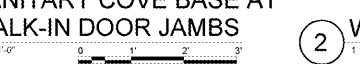
7 DETAIL AT TOP OF WALK-IN REACH-IN DOORS



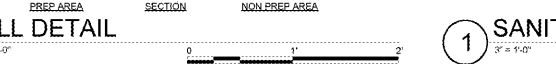
3 SANITARY COVE BASE AT WALK-IN DOOR JAMBS



5 REFRIGERATION DROP LINES (continued)



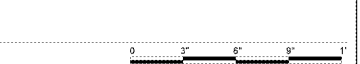
4 BLOCKING AT WALL MOUNTED HAND SINK (continued)



9 INSULATED FREEZER SLAB (continued)



7 DETAIL AT TOP OF WALK-IN REACH-IN DOORS (continued)



3 SANITARY COVE BASE AT WALK-IN DOOR JAMBS (continued)

Order Plans