

SCHEDULE NOTES

1. SCHEDULED WIDTH AND HEIGHT ARE OPENING SIZE
2. AUTOMATIC OPENING DOOR. SCHEDULED DOOR SIZES AND DIMENSIONS ARE OUTSIDE FRAME DIMENSIONS
3. SIGNAGE: PROVIDE 1" HIGH LETTERS IN CONTRASTING COLORS TO BACKGROUND, TEXT TO READ "THIS DOOR TO REMAIN UNLOCKED WHEN THE BUILDING IS OCCUPIED". SIGNAGE PROVIDED BY VENDOR
4. NOT USED
5. INSTALL LIFT CLEARANCE TRACK TO MAXIMUM HEIGHT ALLOWABLE TO STRUCTURE PER MANUFACTURER SPECIFICATIONS
6. EXIT DEVICE AS SPECIFIED
7. TACTILE "EXIT" SIGN, FURNISHED AND INSTALLED BY GC, REF N1
8. OWNER FURNISHED AND INSTALLED
9. SIGNAGE: PROVIDE 1" HIGH LETTERS IN CONTRASTING COLORS TO BACKGROUND, TEXT TO READ "IN EMERGENCY PUSH TO OPEN"
10. NOT USED
11. NOT USED
12. NOT USED
13. NOT USED
14. DOORS TO BE FACTORY FINISH, DO NOT PAINT
15. REF A2 FOR EXTERIOR DOOR AND FRAME COLOR
16. NOT USED
17. PROVIDE ANTI-SWAY BRACKET AT EACH END
18. METAL DOOR FRAMES VISIBLE TO CUSTOMER NOT IN EXTERIOR WALLS TO RECEIVE EPOXY PAINT
19. PROVIDE FLEXIBLE STRIP DOOR
20. PROVIDE ACID-ETCHED GLASS IN DOOR

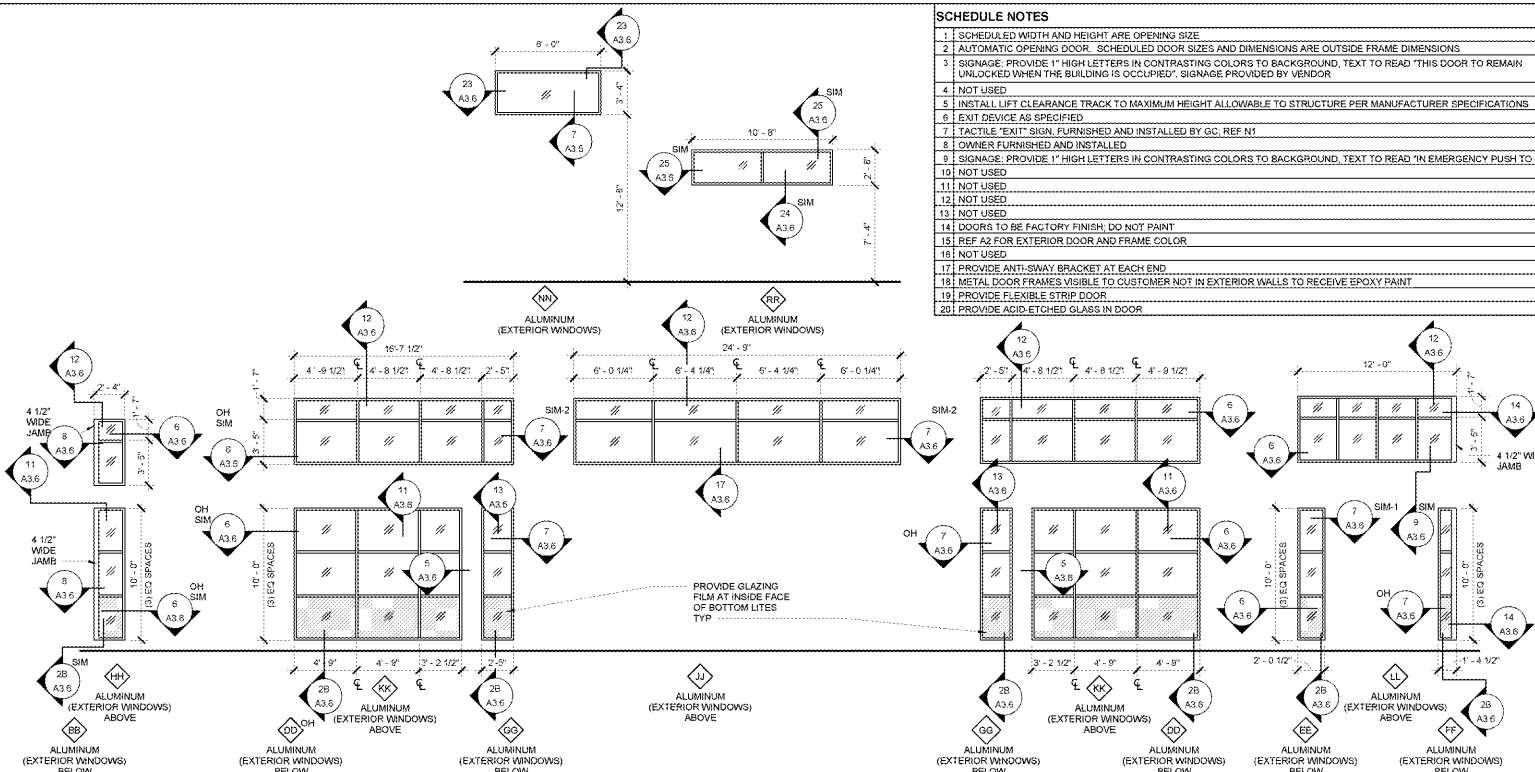
DOOR AND FRAME SCHEDULE

DETAIL REFERENCES ARE TO SHEET AS SHOWN

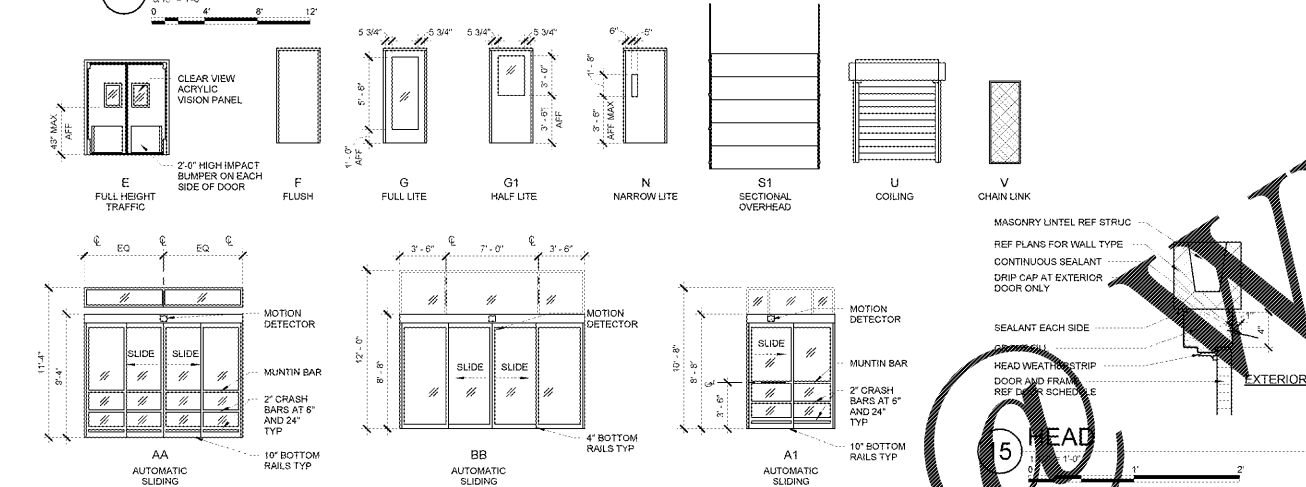
MARK	ROOM NAME	TYPE	MATERIAL	COLOR	QTY	WIDTH	HEIGHT	GLASS	TYPE	MATERIAL	COLOR	HEAD	JAMB	THRESHOLD	FIRE RATNG	NOTES	MARK
100A	SALES	BB	ALUM		1	14'-0"	12'-0"	TEMPERED		ALUM		5	4	3		2,3,7,9	100A
100B	SALES	BB	ALUM		1	14'-0"	12'-0"	TEMPERED		ALUM		5	4	3		2,3,7,9	100B
100C	SALES	F	HM-STL	P99	1	4'-0"	7'-0"		2	HM-STL	P99	10	14	13		6,7,15	100C
102A	CASH	F	HM-STL	P59	1	3'-0"	7'-0"		1	HM-STL	P59	11	10				102A
106A	LPC	N	HM-STL	P99	1	3'-0"	7'-0"	TEMPERED	1	HM-STL	P99	11	10				106A
107A	OFFICE	N	HM-STL	P99	1	3'-0"	7'-0"	TEMPERED	1	HM-STL	P99	11	10				107A
108A	TRAINING	N	HM-STL	P99	1	3'-0"	7'-0"	TEMPERED	1	HM-STL	P99	11	10				108A
108B	BREAK ROOM	N	HM-STL	P99	1	3'-0"	7'-0"	TEMPERED	1	HM-STL	P99	11	10				108B
110A	SITE TO STORE	F	HM-STL	P99	1	3'-0"	7'-0"		1	HM-STL	P99	11	10				110A
110B	SALES	F	HM-STL	P99	1	4'-0"	7'-0"		2	HM-STL	P99	15	14	13		6,7,15	110B
112A	PHARMACY	G	HM		1	3'-0"	7'-0"	TEMPERED	1	HM		11	10				112A
112C	PHARMACY	U	HM		1	4'-8"	4'-3"			1-PH1 1 4-PH1 1							112C
112D	PHARMACY	U	HM		1	4'-8"	4'-3"			1-PH1 1 4-PH1 1							112D
112E	PHARMACY	U	HM		1	3'-8"	4'-3"			1-PH1 1 4-PH1 1							112E
113A	HEALTH SERVICE ROOM	G	HM		1	3'-0"	7'-0"	TEMPERED	1	HM		11	10				113A
113B	HEALTH SERVICE ROOM	G1	HM		1	3'-0"	7'-0"	TEMPERED	1	HM	P99	11	10				113B
116A	VESTIBULE	AA	ALUM		1	12'-0"	8'-8"			ALUM		17-A3.6	7-A3.6	3		2,3,7,9	116A
116B	VESTIBULE	AA	ALUM		1	12'-0"	8'-8"			ALUM		17-A3.6	7-A3.6	3		2,3,7,9	116B
116C	VESTIBULE	A1	ALUM		1	8'-0"	10'-8"			ALUM		17-A3.6	7-A3.6	3		2,3,7,9	116C
117A	CART STORAGE	S1	STEEL	P130	1	7'-4"	4'-8"			P130		8	9B				117A
118A	SPRINKLER ROOM	F	HM-STL	P59	1	3'-0"	7'-0"			HM-STL	P59	22-A3.6	20-A3.6				118A
118B	OSF	G1	HM-STL	P126	PR	3'-0"	7'-0"	ACRYLIC	2	HM-STL	P126	15	14	13		14,15	118B
119C	OSF	G1	HM-STL	P126	PR	4'-0"	7'-0"	ACRYLIC	2	HM-STL	P126	15	14	13		14,15	119C
120A	RECEIVING	E	PLASTIC	BLACK	PR	3'-0"	7'-0"	ACRYLIC		STL-BP	P94	15	14				120A
120B	RECEIVING	F	HM-STL	P59	1	3'-0"	7'-0"			HM-STL	P59	15	14			6,7,15	120B
120C	RECEIVING	S1	STEEL		1	8'-0"	8'-8"					9A				15,16,17,18	120C
120D	RECEIVING	S1	STEEL		1	8'-0"	8'-8"					9A				15,16,17,18	120D
120E	RECEIVING	S1	STEEL		1	8'-0"	8'-8"					2	1			15,16	120E
120F	RECEIVING	V	GL		PR	3'-0"	7'-0"										120F
121B	HALLWAY	E	PLASTIC	BLACK	1	3'-0"	7'-0"	ACRYLIC		BLP		21	20			14,18	121B
121C	HALLWAY	E	PLASTIC	BLACK	1	3'-0"	7'-0"	ACRYLIC		BLP		21	20			14,18	121C
140A	BAKERY	E	PLASTIC	BLACK	1	3'-0"	7'-0"	ACRYLIC		BP		21	20			14,18	140A
141A	BAKERY PREP	E	PLASTIC	BLACK	1	3'-0"	7'-0"	ACRYLIC		BP		21	20			14,18	141A
145A	HALLWAY	F	HM-STL	P59	1	3'-0"	7'-0"			HM-STL	P59	15	14	13		6,7,15	145A
150A	SERVICE DELI	F	PLASTIC	BLACK	1	4'-0"	10'-0"	ACRYLIC		STL		21	20			14,18	150A

SCHEDULE MATERIAL KEY

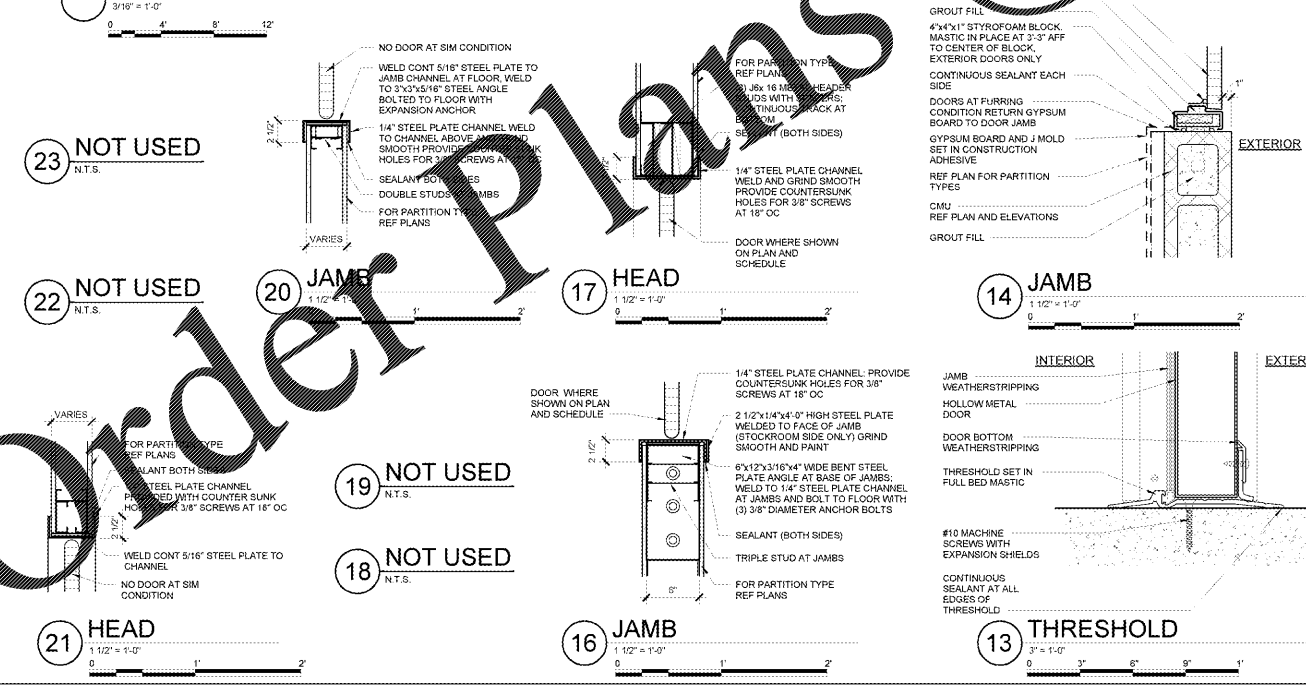
MARK	DESCRIPTION
AL	ALUMINUM LINK
ALUM	ALUMINUM
CHNL	CHANNEL LINK
HM	HOLLOW METAL
HM-STL	HOLLOW METAL-STEEL
OM	ORNAMENTAL METAL
PR	PAIR
STL-BP	STEEL BENT PLATE
STL-P	STEEL PIPE
ULTR	UNEVEN PAIR



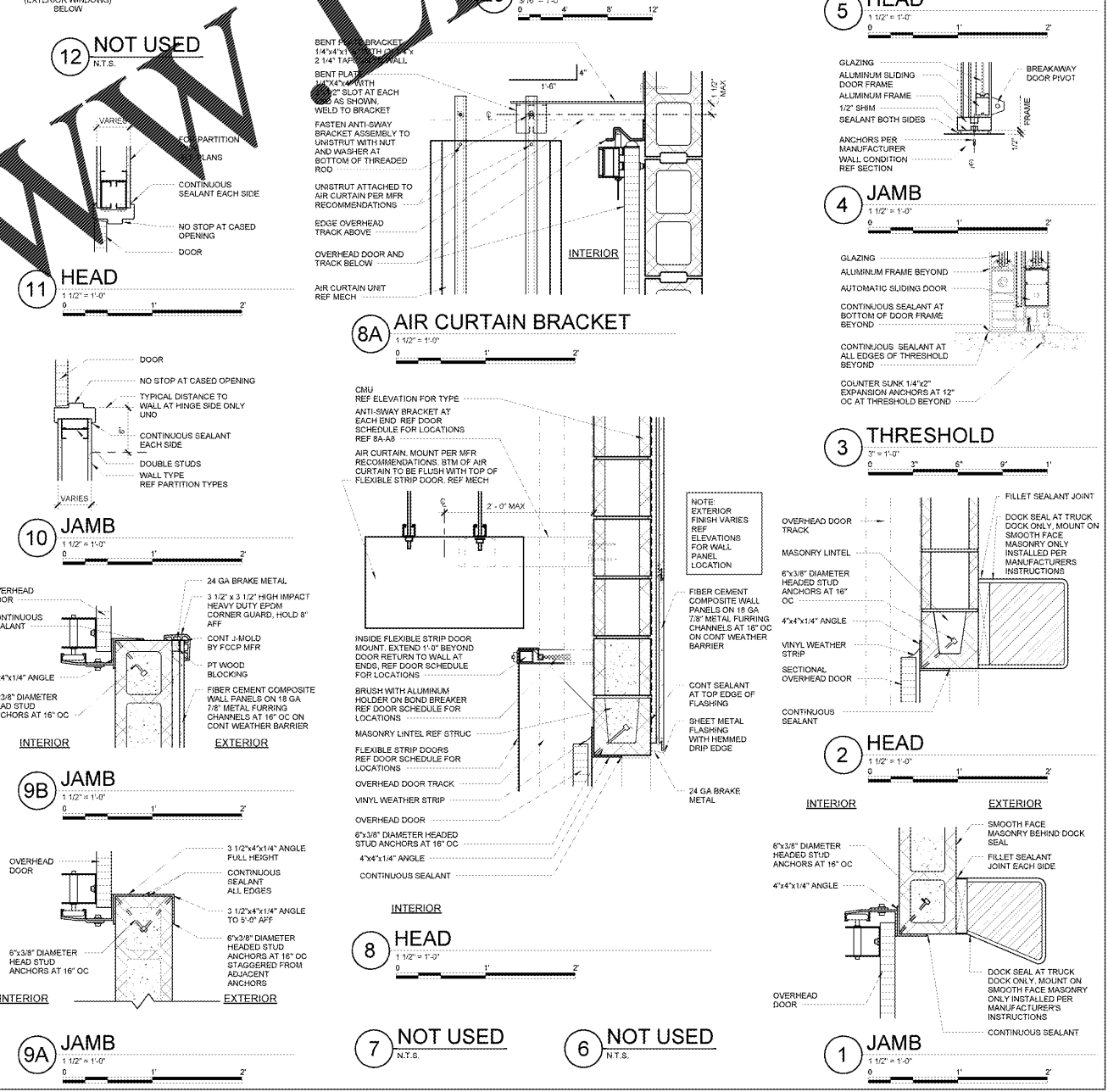
WINDOW TYPES



DOOR TYPES



FRAME TYPES



WALMART
AOPKA, FL
STORE NO: 6894-00
JOB NUMBER: 097-15-006 | PHOTO

ISSUE BLOCK
3 REV 5 04/07/17

CHECKED BY: MMA
DRAWN BY: MMA
FILE NAME: 41_2-8
PROTO CYCLE: 102816
DOCUMENT DATE: 01/09/17

BID SET NOT FOR CONSTRUCTION

DOOR SCHEDULE AND DETAILS

SHEET: **A8**