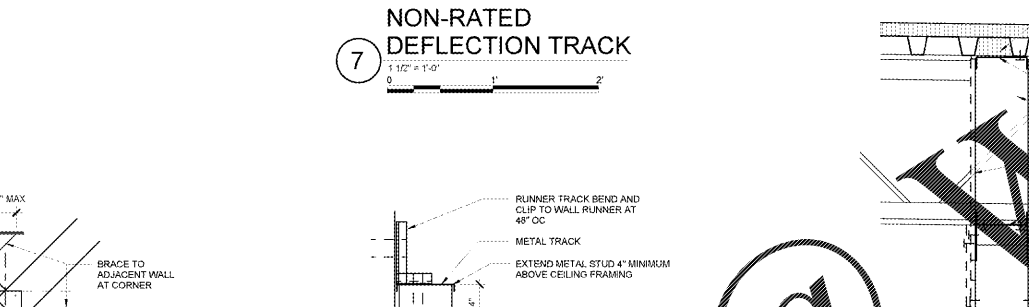
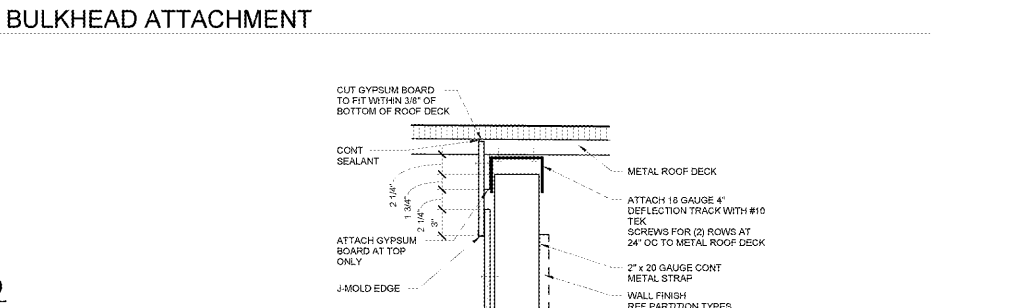
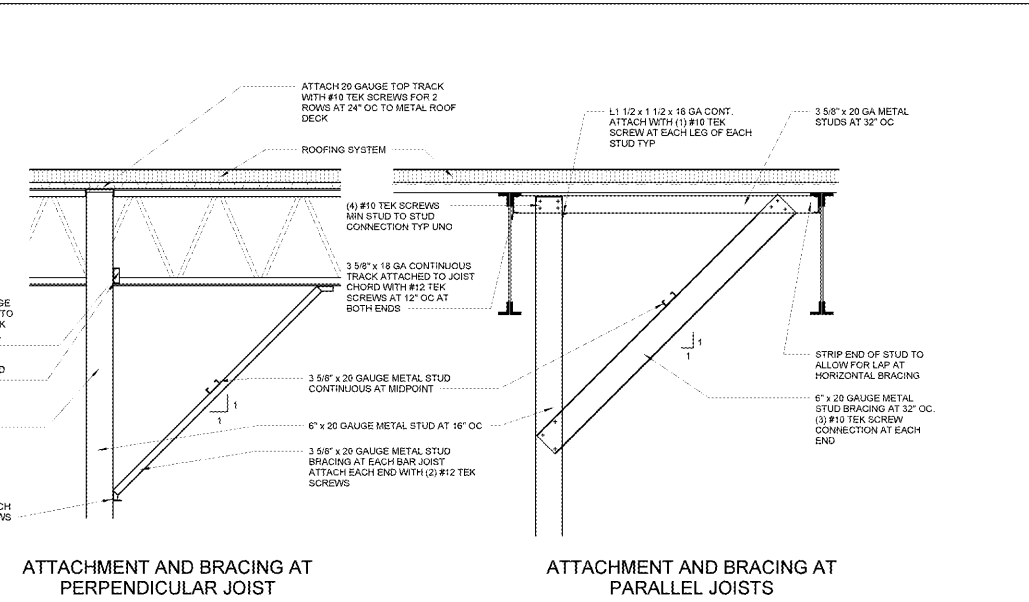
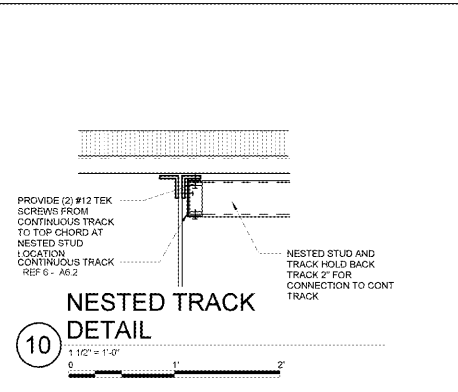
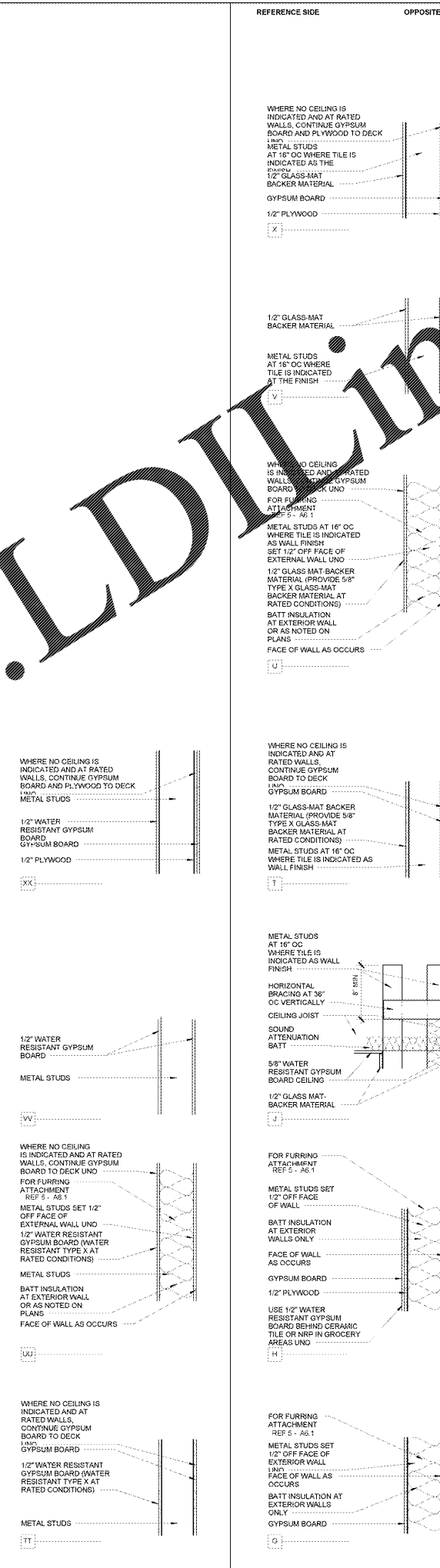
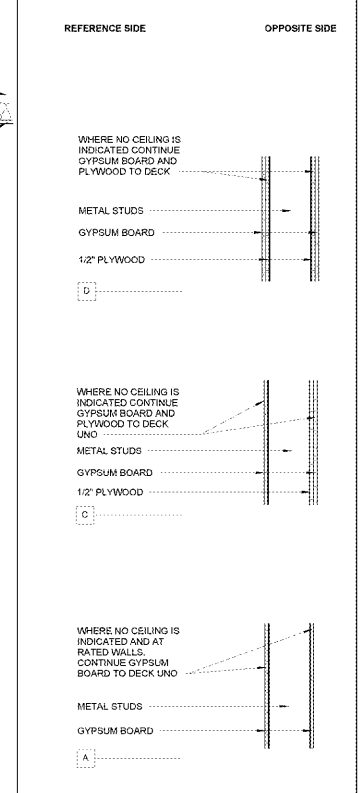
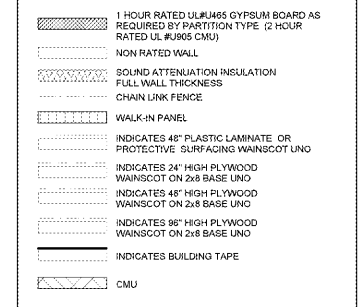
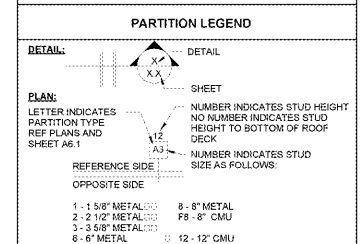


- GENERAL NOTES**
- STUDS CONTINUE TO DECK UNO. REF CAPTURE TRACK DETAILS FOR DEFLECTION REQUIREMENTS.
 - USE 1/2" GYPSUM BOARD ON NON-RATED PARTITIONS UNO.
 - USE 5/8" TYPE X GYPSUM BOARD ON FIRE RATED PARTITIONS.
 - REF ROOM FINISH SCHEDULE FOR ROOMS THAT RECEIVE NRP.
 - CONTINUE FINISH MATERIAL TO A MINIMUM OF 4" ABOVE SUSPENDED CEILING SYSTEMS UNO.
 - REF PARTITION KEY SYMBOL FOR STUD THICKNESSES.
 - WHERE NO CEILING IS INDICATED CONTINUE FINISH TO DECK UNO. MAINTAIN CLEARANCE BELOW STRUCTURE PER DEFLECTION TRACK DETAILS.
 - STUD PARTITIONS REQUIRING A FIRE RATING SHALL COMPLY WITH UL#465 DR UL #442 MASONRY PARTITIONS REQUIRING TWO HOUR FIRE RATING SHALL COMPLY WITH UL#145.
 - STUD WALLS RECEIVING PLUMBING SHALL BE 1/2" GAUGE OR HEAVIER.
 - MAXIMUM HEIGHT OF NON-LOAD BEARING WALL SHALL REFER TO BE 32'-0".
 - REF SPECIFICATIONS FOR LATERAL BRACING OF STUD PARTITIONS.
 - FOR TERMINATING CHANGING STUD BRACING ABOVE THE CEILING FOR INTERIOR WALL STUDS THAT DO NOT GO TO DECK, USE WATER RESISTANT GYPSUM BOARD BEHIND NRP.
 - PROVIDE BLOCKING AT FLOOR AND ROOF LEVELS. CONNECTIONS BETWEEN STAIRWAY STRINGERS, PENETRATORS IN FLOOR/CEILING ASSEMBLIES AND OTHER LOCATIONS AS REQUIRED BY CODE.
 - FIRE RATED EGRESS CORRIDORS ARE TO BE SEALED WITH INTUMESCENT SEALING SYSTEMS. RATED WALLS ARE TO BE SEALED TO DECK. VERTICAL JOINTS AT CMU/GYPSUM BOARD WALLS ARE TO BE SEALED BOTH SIDES. WALL PENETRATIONS SUCH AS BAR JOISTS, PIPING, CONDUIT, DUCTWORK, ETC. ARE TO BE SEALED PER FIRE STOP MANUFACTURER'S RECOMMENDATIONS.
 - FOR FURRED WALLS PROVIDE METAL STUD BRACING AT 32" OC VERTICAL FOR EACH STUD AND 32" OC HORIZONTAL.
 - FOR FULL HEIGHT WALLS LESS THAN 6" IN WIDTH BRACE WALL ABOVE CEILING AND BELOW 15'-0". REF 11-A6.1 FOR SIM BRACING CONDITION.
 - REF A7 FOR SCHEDULE FINISH KEY.



INTERIOR NON-LOAD BEARING PARTITION HEADER SCHEDULE

HEADER LENGTH	HEADER MEMBERS	MINIMUM EFFECTIVE PROPERTIES PER STUD
2'-0" TO 6'-0"	(2) 8" X 18 GAUGE	I _x = 2.042; S _x = 0.670
6'-0" TO 8'-0"	(2) 8" X 18 GAUGE	I _x = 2.518; S _x = 0.838
8'-0" TO 10'-0"	(2) 8" X 18 GAUGE	I _x = 3.094; S _x = 1.031
10'-0" TO 12'-0"	(2) 8" X 18 GAUGE	I _x = 4.134; S _x = 1.033
12'-0" TO 14'-0"	(2) 8" X 18 GAUGE	I _x = 5.110; S _x = 1.277
14'-0" TO 16'-0"	(2) 8" X 18 GAUGE	I _x = 6.303; S _x = 1.576
16'-0" TO 18'-0"	(2) 10" X 14 GAUGE	I _x = 12.325; S _x = 2.456
18'-0" TO 20'-0"	(2) 12" X 16 GAUGE	I _x = 15.730; S _x = 2.334

Order Plans

© 2006 LD DILLINGHAM AND ASSOCIATES, INC.