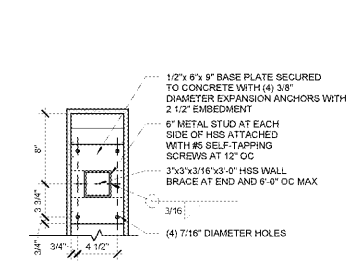
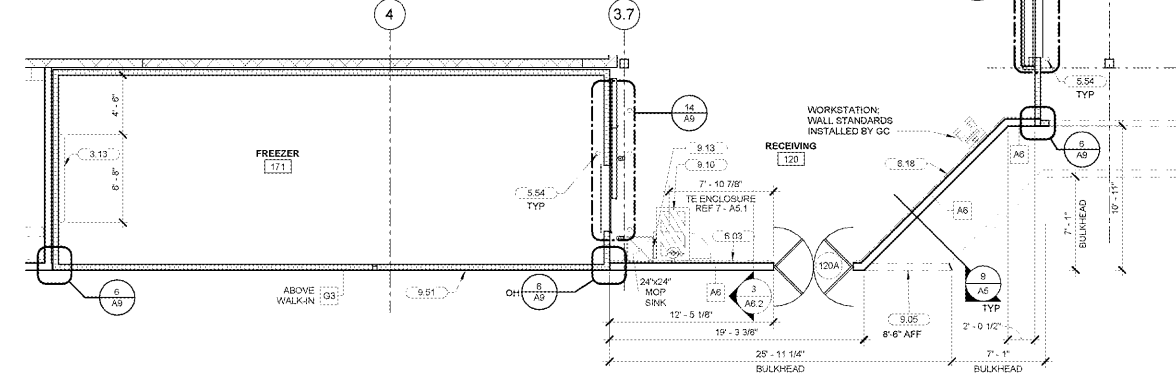


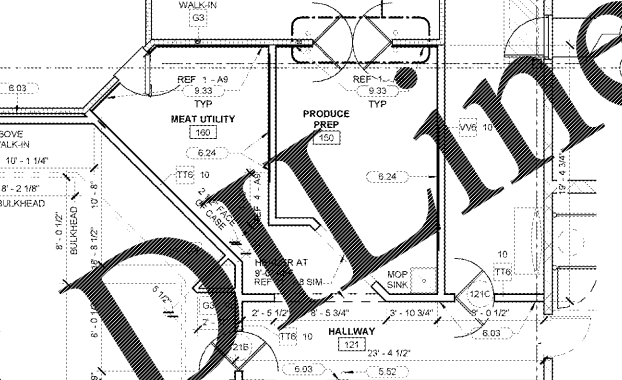
9 SECTION AT BULKHEAD
3/4" = 1'-0"



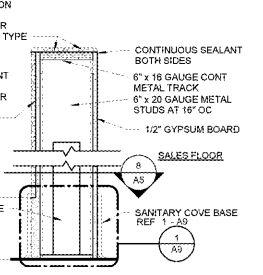
8 PLAN AT HALF WALL
1/4" = 1'-0"



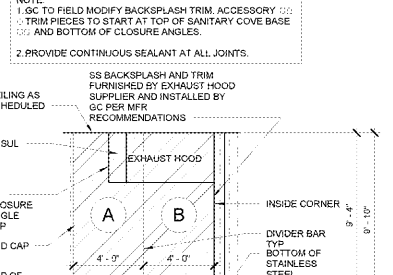
2 ENLARGED FINISH PLAN
3/8" = 1'-0"



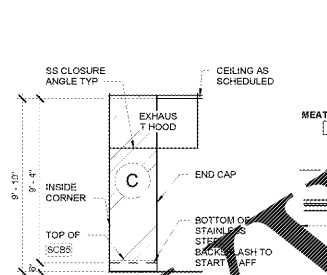
1 ENLARGED FLOOR PLAN
3/8" = 1'-0"



7 SECTION AT HALF WALL
1/2" = 1'-0"



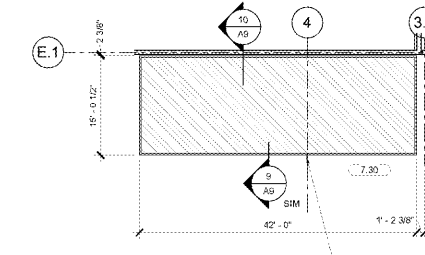
6 BACKSPASH AT EXHAUST HOOD
1/4" = 1'-0"



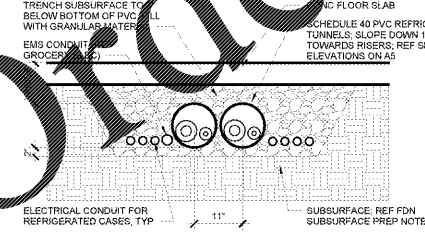
6A BACKSPASH AT EXHAUST HOOD SIDE
3/4" = 1'-0"

STAINLESS STEEL BACKSPASH SIZE	
PANEL	HEIGHT
A	4'-0"
B	4'-0"
C	4'-0"

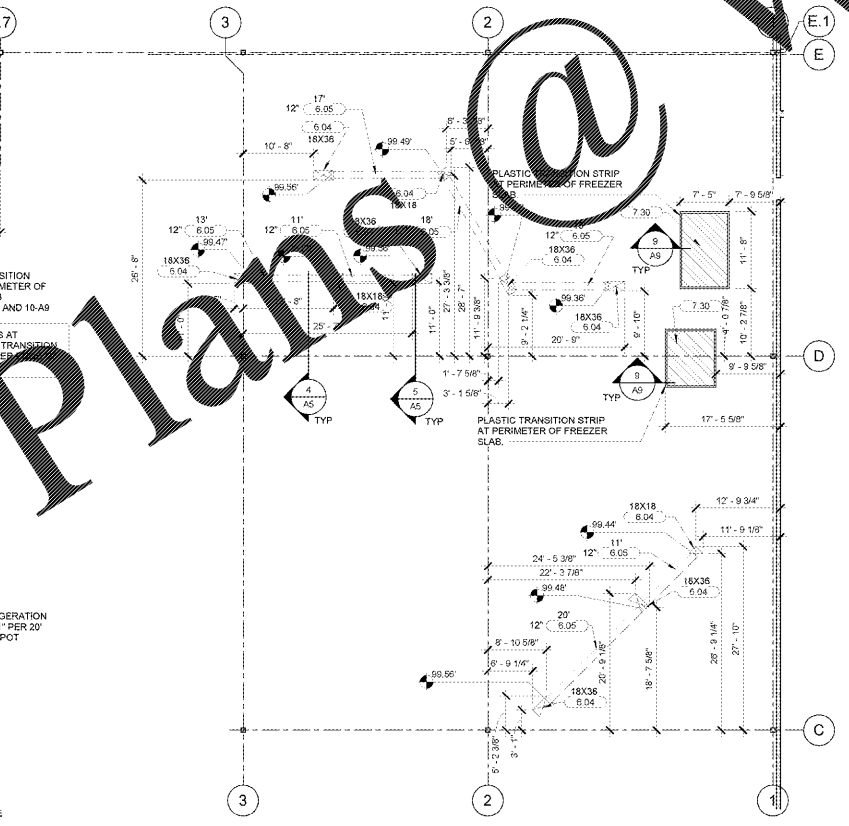
STAINLESS STEEL BACKSPASH ACCESSORIES	
DESCRIPTION	QUANTITY
END CAPS (7)	3
DIVIDERS (7)	2
CLOSURE ANGLE (7)	1
INSIDE CORNER (9-6)	1



5 REFRIGERATION PIT
1/2" = 1'-0"



4 REFRIGERATION TRENCH
3/4" = 1'-0"



3 UNDER SLAB PLAN
3/32" = 1'-0"

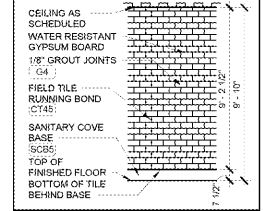
GENERAL NOTES

1. PROPER INSTALLATION OF JOINT SEALANTS IS CRITICAL TO MEETING OWNER'S QUALITY ASSURANCE STANDARDS. PROVIDE SEALANTS IN ACCORDANCE WITH DRAWINGS AND SPECIFICATIONS.
2. ALL JOINTS BETWEEN DISSIMILAR MATERIALS SHALL BE SEALED AS REQUIRED FOR A COMPLETE AND PROPER INSTALLATION. REGARDLESS OF WHETHER SHOWN ON THE DRAWINGS OR INDICATED IN THE SPECIFICATIONS, SUCH JOINTS NOT SHOWN OR SCHEDULED SHALL BE SEALED WITH SEALANT CONSISTENT WITH SPECIFIED MATERIALS OR RECOMMENDED BY THE MANUFACTURER FOR THE SPECIFIC APPLICATION.
3. INTERIOR SEALANTS USED IN FOOD PREPARATION AREAS SHALL MEET THE REQUIREMENTS FOR USE IN FDA REGULATED FACILITIES.
4. COAT HALL WALK-IN COOLER AND FREEZER FURNISHED BY OWNER TO A MAXIMUM HEIGHT OF 48" AFF.

KEYNOTE LEGEND

- 3.13 6" WIDE X 6" HIGH CONTINUOUS CONCRETE CURB WITH SMOOTH HAND TROWEL FINISH AT BASE OF WALK-IN BOX STEEL LINDER
- 5.11 32" CORE DRILLED UNO GALVANIZED STEEL BOLLARD 4" OD
- 5.52 32" CORE DRILLED UNO GALVANIZED STEEL BOLLARD 4" OD FURNISHED BY OWNER, INSTALLED BY GC
- 6.03 48" HIGH PLYWOOD WANSCOOT BEHIND 2X8 WOOD BASE
- 6.04 PREFABRICATED FIBERGLASS REFRIGERATION PIT PIT SIZE NOTED ABOVE KEYNOTE
- 6.18 96" HIGH PLYWOOD WANSCOOT BEHIND 2X8 WOOD BASE
- 6.24 PROVIDE 1/2" PLYWOOD BLOCKING FROM 48" TO 96" AFF BETWEEN STUDS AND ENTIRE LENGTH OF WALL
- 7.30 HATCHED AREA INDICATES EXTENT OF INSULATED FREEZER FLOOR INCLUDING KORLYTE TRANSITION STRIP
- 9.05 SUSPENDED BULKHEAD/SOFFIT HEIGHT AT BOTTOM OF STUD NOTED ABOVE KEYNOTE
- 9.10 PAINT 4" WIDE FLOOR STRIPES COLOR P5 AT 12" OC, REF 914 FOR SIZE
- 9.13 PROVIDE 8'-0" HIGH X 48" WIDE NRP PANELS BEHIND AND TO THE SIDE OF MOP SINK
- 9.33 BUILDING TAPE INSTALLED PRIOR TO INSTALLATION OF SANITARY COVE BASE
- 9.41 12" WATER RESISTANT GYPSUM BOARD INSTALLED TO FACE OF WALK-IN AS INDICATED ON PLANS. FASTENERS NOT TO EXCEED 1/2" IN LENGTH
- 9.51 1/2" GYPSUM BOARD INSTALLED TO FACE OF WALK-IN AS INDICATED ON PLANS. FASTENERS NOT TO EXCEED 1/2" IN LENGTH
- 15.07 EXHAUST HOOD REF MECHANICAL

TYPICAL TILE ELEVATION



LEGEND

- (A) STAINLESS STEEL CORNER GUARD FULL HEIGHT UNLESS NOTED OTHERWISE REF 4 - A7
 - (B) STAINLESS STEEL CORNER TRIM FULL HEIGHT UNLESS NOTED OTHERWISE REF 4 - A7
 - (C) STAINLESS STEEL CORNER TRIM FULL HEIGHT UNLESS NOTED OTHERWISE REF 4 - A7
 - (D) STAINLESS STEEL EDGE TRIM FULL HEIGHT UNLESS NOTED OTHERWISE REF 4 - A7
- NOTES:
- 1.0 EXTEND TILE PAST BOTTOM OF HOOD TO FULL HEIGHT OF WALL
 - 2.0 EXTEND TILE TO EDGE OF DOOR OPENINGS TO FULL HEIGHT OF WALL
 - 3.0 STAINLESS STEEL CORNER GUARD TYPES REF 4 - A7



STIPULATION FOR THE CONTRACTOR TO REVIEW AND APPROVE THE PROJECT BEFORE THE START OF WORK. THE CONTRACTOR SHALL BE RESPONSIBLE FOR OBTAINING ALL NECESSARY PERMITS AND APPROVALS FROM THE LOCAL, STATE, AND FEDERAL AUTHORITIES. THE CONTRACTOR SHALL BE RESPONSIBLE FOR OBTAINING ALL NECESSARY PERMITS AND APPROVALS FROM THE LOCAL, STATE, AND FEDERAL AUTHORITIES. THE CONTRACTOR SHALL BE RESPONSIBLE FOR OBTAINING ALL NECESSARY PERMITS AND APPROVALS FROM THE LOCAL, STATE, AND FEDERAL AUTHORITIES.

CONSULTANTS



ISSUE BLOCK	
NO.	DESCRIPTION
1	REV 3 03/10/17

CHECKED BY: Checker
DRAWN BY: Author
FILE NAME: 41_2-AS
PROTO CYCLE: 102816
DOCUMENT DATE: 01/09/17

BID SET NOT FOR CONSTRUCTION

ENLARGED FLOOR, FINISH, AND UNDERSLAB PLANS

SHEET: A5